

Product datasheet for **RC223671**

PREX2 (NM_024870) Human Tagged ORF Clone

Product data:

Product Type:	Expression Plasmids
Product Name:	PREX2 (NM_024870) Human Tagged ORF Clone
Tag:	Myc-DDK
Symbol:	PREX2
Synonyms:	DEP.2; DEPDC2; P-REX2; PPP1R129
Mammalian Cell Selection:	Neomycin
Vector:	pCMV6-Entry (PS100001)
E. coli Selection:	Kanamycin (25 ug/mL)
ORF Nucleotide Sequence:	>RC223671 representing NM_024870 Red=Cloning site Blue=ORF Green=Tags(s)

TTTTGTAATACGACTCACTATAGGGCGGCCGGAATTCGTCGACTGGATCCGGTACCGAGGAGATCTGCC
GCC**CGATCGCC**

ATGAGCGAGGACAGCCGCGGAGACAGCCGCGCCGAGAGCGCCAAGGACCTGGAGAAGCAGCTTCGCCTGC
GCGTGTGCGTGCTCAGCGAGCTCCAGAAGACCGAGCGGGACTATGTGGGCACGCTGGAGTTCCTGGTGTC
GGCATTCTTACACAGAATGAACCAAGTGTGCAGCATCAAAAGTTGACAAAAATGTGACAGAAGAAACAGTG
AAGATGTTGTTCTCAAACATTGAAGACATCCTTGCAGTACATAAAGAATCTTAAAAGTCGTGGAAGAAT
GCTTACACCCGAACCTAATGCTCAACAAGAAGTGGGAACCTGCTTCTCACTTTAAAGACAAGTTTCG
TATCTATGATGAATATTGTAGTAACCATGAGAAGGCACAAAAATTACTTCTTGAACCAAAAAATAAGA
ACAATCCGGACATTTCTTTGAACTGCATGCTGCTTGGAGGACGGAAGAACAAGATGTTCCCTTGGAAAG
GATATTTAGTAACACCAATACAAAGAATATGCAAGTACCCTCTTATTTTGAAGGAGTTGCTGAAGCGGAC
TCCACGGAAACACAGTGACTATGCAGCAGTGATGGAAGCCCTCCAAGCCATGAAAGCTGTCTGTTCCAAC
ATAAACGAGGCCAAGAGACAGATGGAGAAGTTAGAAGTTTTAGAGGAATGGCAGTCTCACATTGAAGGCT
GGGAGGGTCCAACATCACTGACACCTGCACTGAAATGCTAATGTGTGGAGTCTTACTGAAAATTTCTTC
TGAAAATATTCAAGAACGGGTGTTTTTTCTTTTCGATAATCTTTTGGTGTACTGCAAAAAGAAAACACAGA
CGTTTGAAGAACAGCAAGGCATCTACAGATGGACATCGGTACCTTTTTCTGGCCGATCAACACGGGAGG
TGATGGAAGTGGAGAATGTGGATGATGGCACCGCTGATTTCCATAGCAGTGGACACATTGTTGTTAATGG
ATGGAAGATACATAACACAGCAAAAAATAAATGTTTTGTTGTATGGCAAAAACCTGAAGAGAAGCAT
GAATGTTTTGAAGCTATTTTGAAGAAAGAGAACGGCGGAAAGGTTAAAATTAGGAATGGAGCAAGATA
CCTGGGTCATGATCTCTGAACAGGGTGAGAACTTTATAAAATGATGTGCAGACAAGGAAATCTGATCAA
AGACCGAAAGAGAAAAGTACTACGTTCCCTAAATGCTTTCTTGGAAAGCGAATTTGTGTCATGGCTGTTG
GAAATTTGGAGAGATTACAGGCCTGAGGAAGGCGTGCCTTGGGACAAGCATTATTAGAAAATGGAATCA
TTCACCATGTTACTGATAAATCAATTCAAACCAGAACAGATGTTATATAGATTTGCTATGATGATGG
AACATTTTATCCAAGAAATGAGATGCAGGACGTGATTTCAAAGGGTGAAGATTATTGTCGCTTTCAT



[View online »](#)

AGCCTTTTACTCCAGTGATAAGAGATAAAGATTACCATTTAAGGACCTACAAATCTGTGGTCATGGCCA
 ACAAAGTATAGACTGGTTAATTGCACAGGGAGATTGCCGACCAGAGAAGAGGCAATGATATTTGGCGT
 TGGACTCTGTGACAAATGGATTTATGCACCATGTCTTGAAAAAGCGAATTCAAAGATGAACCCCTACTT
 TTCCGTTTTTTTTCGGATGAGGAAATGGAGGGATCAAATATGAAACATCGACTTATGAAACATGACTTAA
 AAGTTGTGAAAAATGTTATAGCTAAGTCATTATTGATTAATCCAATGAAGGCAGCTATGGCTTTGGATT
 AGAAGCAAAAAATAAGTTCCAATAATAAAGTTGGTAGAAAAGGGATCTAATGCTGAGATGGCTGGCATG
 GAAGTCGGGAAAAAGATTTTTGCTATTAATGGTGACCTAGTTTTTATGAGACCTTTCAATGAAGTGGATT
 GCTTCTGAAATCGTGTTTAAACAGCAGAAAACCTCTAAGAGTTCTTGTGAGCACAAAGCCAAGAGAGAC
 AGTGAAAATTCCAGATTCAGCTGATGGACTTGGCTTCCAGATCCGGGGATTTGGCCCTTCTGTTGTGCAT
 GCTGTAGGAAGAGGAAGTGTGGCTGCAGCAGCTGGTCTTACCCTGGACAGTGCATTATCAAGGTGAATG
 GAATCAATGTCAGCAAAGAGACACATGCCAGTGTATTGCACACGTTACAGCCTGCAGGAAGTACAGGCG
 GCCAACGAAGCAAGATTCATACAATGGGTTTATAATAGCATTGAGAGTGTCTCAAGAAGACCTTCAAAAA
 TCTCACTCCAAGCCCCCTGGAGATGAAGCAGGGGATGCTTTTGACTGTAAAGTAGAAGAGGTTATTGACA
 AATTCAACACTATGGCCATCATTGATGGGAAGAAGGAGCATGTGAGTCTGACAGTGGACAATGTCCACCT
 GGAATATGGTGTCTGTATGAGTACGACAGCAGCTGGCATCAAGTGAATGTGGTGGAAAAGATGATT
 GAGCCCAAGGTTTCTTCACTTAACTGCAAGATTCTTGAAGCCCTGGCTAAAAGTGTGAGCATTTTG
 TACAAAATGTACCAGCCTAAATTTCTCTAAATGAAGTGATTCTACTGACCTTCAGAGTAAATTCAGTGC
 CCTTGTGAGTGAAGAATTGAACACCTATGTGAGAGAATCCAGTTATAAAAAGTTTTCTCGTGTACTG
 AAGAATAGGGCCTGGCCTACTTTTAAACAGGCCAAATCTAAAATCTCCCACTGCACAGCAGTGAATTTCT
 GCCCTACCAACTGCCATGTCAATGTGATGGAAGTTTCTTATCCAAAACATCAACCTCTTTGGGAAGTGC
 ATTTGGTGTTCAGTTGGATAGCAGGAAGCATAAATCTCATGATAAAGAAAAACAACTTCGGAGCAAGGG
 AAATGAGCCCTATGGTGTACATTCAGCACACCATCACAACTGGCGGCCCTTCAGTCTGTCTCTGG
 GACAGCAGGATGGCCATGGTCTCAGGTATCTGCTAAAAGAAGAAGACTTAGAAACCAAGACATATCA
 GAAACTGCTGGGCAAACTTCAGACTGCAGTGAAGAGGTTGGAGATGTGTGTTTGTCAAATAGATGACCTT
 CTGTCTTCAATAACATATTCTCCTAAATAGAACGTAAGACATCAGAGGGCATAATACCAACAGACAGTG
 ACAATGAGAAGGGAGAAAAGAAACAGCAAACGGGTATGTTTTAATGTAGCAGGAGATGAACAGGAAGATTC
 TGGTATGACACCATCAGCAACAGAGACTTACAGTGAAGTGAACAGCAATAGGAATTCATCGCCTCC
 TTCACCAGCATCTGCAGCAGCCAGTGCAGCTCGTATTTCCACAGTGTGAAATGGACTCAGGTGATGAAC
 TTCCCTTAAAGTGTTCGCATATCTCATGATAAACAGGACAAGATACATAGTTGCCTTGAGCATTTTTAG
 CCAGGTGGATTCAATTACCAATCTCCTAAAAGGGCAGGCTGTTGTGAGGGCCTTTGACCAAAACAGTAT
 CTCCTCCAGGCCGAGGATTGCAAGAATTTCAACAGGAAATGGAACCAAGCTGAGTTGTCCAAAAGGC
 TACGGCTTCATATCAAGCAAGATCCTTGAATCTTCCAGCAGCGTCCGACTCTTGTCTCAGAACATCAG
 GAAATTTGTTGAAGAGGTAAGTGTAGGCTACTCCTGGCTCTTCTTGAATATTCAGATAGTGAGACACAG
 CTCCGTAGAGACATGGTTTTCTGCCAGACTCTTGTGGCCACTGTCTGTGCCTTCTCTGAGCAGCTCATGG
 CGGCCTTGAACAGATGTTTGACAACAGCAAGGAAAATGAGATGGAAACTTGGGAAGCCAGCAGGAGGTG
 GCTGGACCAGATAGCGAATGCAGGTGTTCTTTTCACTTTCAGTCACTTCTGTCAACAACTTGACAGAT
 GAACAAGCCATGTTAGAAGATACACTGGTTGCACTATTTGATTTGGAAAAGGTTTCTTTTACTTTAAAC
 CATCAGAAGAGGAACCTCTGGTTGCAAAATGTTCTTACATATCAAGCAGAAGGAAGTCGGCAAGCTCT
 GAAAGTTTACTTCTACATTGATAGTTATCATTGAAACAATCTCCTCAACGGCTGAAAAATGGAGGAGGG
 TTTAAAATTCATCTGTTCTTTTGCACAAGCACTAGAGAGCATGGAAGGATATTATTACAGAGACAATG
 TTTCTGTGGAAGAATTTCAAGCTCAGATAAATGCAGCCTCACTGAAAAGGTCAAACAGTACAACAGAA
 GCTCAGGGCATTCTACTTGGACAAGTCAAATTCACCACCAAACTCCACATCCAAAGCTGCCTATGTAGAT
 AAGCTAATGAGGCCTCTCAACGCTTTGGATGAACTTTACCGACTGGTAGCCTCGTTTATCAGATCCAAGC
 GCACAGCTGCCTGTGCAACACAGCTTGCAGTGTCTTGGGGTTGGACTGCTGTGAGTTTCTCGGAGCT
 GTGCAACAGGCTGGGCGCCTGCCACATCATGTGTCAGCAGCGGTGTGCATCGGTGCACCTGAGCGTG
 ACGCTGGAGCAAGCCATCATTCTGGCCAGAAGCCACGGACTGCCACCTCGTTACATCATGAGGCTACAG
 ATGTGATGCGGAAGCAGGAGCAAGAGTTCAGAACACAGCGAAGAAATTTGGGAGTCAGAGACCGGACTCC
 ACAGTCTGCACCAAGGCTGTACAAGCTGTGCGAGCCACCTCCCCAGCTGGAGAAGAA

ACGCGTACGCGGCCGCTCGAGCAGAACTCATCTCAGAAGAGGATCTGGCAGCAAATGATATCCTGGATT
 ACAAGGATGACGACGATAAGGTTTAA

Protein Sequence: >RC223671 representing NM_024870
 Red=Cloning site Green=Tags(s)

MSEDSRGSRAESAKDLEKQLRLRVCVLSLQKTERDYVGTLEFLVSAFLHRMNQCAASKVDKNVTEETV
 KMLFSNIEDILAVHKEFLKVVEECLHPEPNAQQEVGTCFLHFKDKFRIYDEYCSNHEKAQKLLLELNKIR
 TIRTFLLNCMLLGGKNTDVPLEGYLVTPIQRICKYPLILKELLKRTPRKHSYAAVMEALQAMKAVCSN
 INEAKRQMEKLEVL EEWQSHIEGWEGSNI TDCTEMLMCGVLLKISSGNIQERVFLLFDNLLVYCKRKH
 RLKNSKASTDGHRYLFRGRINTEVMEVENVDGTAADFHSSGHI VVNGWKIHNTAKNKWFVCMAPTPEEKH
 EWFEAILKERERRKGLKLGMEQDTWVMISEQGEKLYKMMCRQGNLIKDRKRKLTTFPKFCFLGSEFVSWLL
 EIGEHRPEEGVHLGQALLENGI IHHVTDKHQFKPEQMLYRFRYDDGTFYPRNEMQDVISKGVRLYCRHL
 SLFTPVIRDKDYHLRTYKSVVMANKLIDWLAQGD CRTREEAMIFGVGLCDNGFMHHVLEKSEFKDEPLL
 FRFFSDEEMEGSNMKHRLMKHDLKVVENVIAKSLLIKSNESYGFLEDKNKVPIIKLVEKGSNAEMAGM
 EVGKKIFAINGDLVFMRFNEVDCFLKSCLSNRKPLRVLVSTKPRETVKIPDSADGLGFQIRGFGPSVVH
 AVGRGTAAAAGLHPGQCIIKVNGINVSKETHASVIAHVTACRKYRRPTKQDSIQWVYNSIESAQEDLQK
 SHSKPPGDEAGDAFDCKVEEVIDKFNTMAIIDGKKEHVSLTVDNVHLEYGVVYEDSTAGIKCNVVEKMI
 EPKGFSSLTAKILEALAKSDEHFVQNCTSLNSLNEVIPTDLQSKFSALCSERIEHL CQRISYKKSFRVL
 KNRAWPTFKQAKSISPLHSSDFCTNCHVNVMEVSYPKTSTSLGSAFGVQLDSRKHNSHDKENKSSSEQG
 KLSPMVYIQHTITTMAAPSGLSLGGQDGHGLRYLLKEEDLETQDIYQKLLGKLTALKEVEMCVCQIDDL
 LSSITYSPKLERKTSEGI IPTSDNEKGERNSKRVCFNVAGDEQEDSGHDTISNRDSYSDCNSNRNSIAS
 FTSISSQCSYFHSDEMDSGDELPLSVRISHDKQDKIHSCL EHLFSQVDSITNLLKGQAVVRAFQDTKY
 LTPGRGLQEFQQEMEPKLSCKRRLRLHIKQDPWNL PSSVRTLAQNIRK FVEEVKCRLLLALLEYSDSETQ
 LRRDMVFCQTLVATVCAFSEQLMAALNQMF DNSKENEMETWEASRRWLDQIANAGVLFHFQSLSPNLTD
 EQAMLEDTLVALFDLEKVSFYFKPSEEEPLVANVPLTYQAEGRQALKVYFYIDSYHFEQLPQRLKNGGG
 FKIHVPVLFQALESMEGYYYRDNVSVVEEFQAQINAASLEKVKQYNQKLR AFYLDKSNSPNSTSKAAYVD
 KLMRPLNALDEL YRLVASFIRSKRTAACANTACSASGVLLSVSSEL CNRLGACHIMCSSGVHRCTLSV
 TLEQAIILARSHGLPPRYIMQATDVMRKQGARVQNTAKNLGVRDRTPQSAPRLYKLC EPPPPAGEE

TRTRPLEQKLISEEDLAANDILDYKDDDDKV

Chromatograms: https://cdn.origene.com/chromatograms/mk8046_e05.zip

Restriction Sites: SgfI-MluI

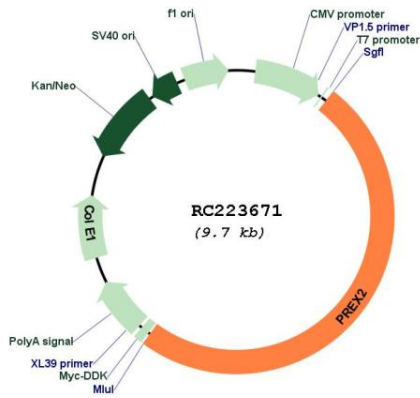
Cloning Scheme:



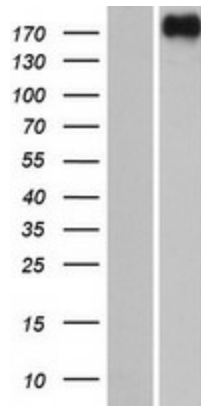
ACCN: NM_024870

ORF Size:	4818 bp
OTI Disclaimer:	The molecular sequence of this clone aligns with the gene accession number as a point of reference only. However, individual transcript sequences of the same gene can differ through naturally occurring variations (e.g. polymorphisms), each with its own valid existence. This clone is substantially in agreement with the reference, but a complete review of all prevailing variants is recommended prior to use. More info
OTI Annotation:	This clone was engineered to express the complete ORF with an expression tag. Expression varies depending on the nature of the gene.
Components:	The ORF clone is ion-exchange column purified and shipped in a 2D barcoded Matrix tube containing 10ug of transfection-ready, dried plasmid DNA (reconstitute with 100 ul of water).
Reconstitution Method:	<ol style="list-style-type: none">1. Centrifuge at 5,000xg for 5min.2. Carefully open the tube and add 100ul of sterile water to dissolve the DNA.3. Close the tube and incubate for 10 minutes at room temperature.4. Briefly vortex the tube and then do a quick spin (less than 5000xg) to concentrate the liquid at the bottom.5. Store the suspended plasmid at -20°C. The DNA is stable for at least one year from date of shipping when stored at -20°C.
RefSeq:	NM_024870.4
RefSeq Size:	5132 bp
RefSeq ORF:	4821 bp
Locus ID:	80243
UniProt ID:	Q70Z35
Cytogenetics:	8q13.2
MW:	182.4 kDa
Gene Summary:	The protein encoded by this gene belongs to the phosphatidylinositol 3,4,5-trisphosphate (PIP3)-dependent Rac exchanger (PREX) family, which are Dbp-type guanine-nucleotide exchange factors for Rac family small G proteins. Structural domains of this protein include the catalytic diffuse B-cell lymphoma homology and pleckstrin homology (DHPH) domain, two disheveled, EGL-10, and pleckstrin homology (DEP) domains, two PDZ domains, and a C-terminal inositol polyphosphate-4 phosphatase (IP4P) domain that is found in one of the isoforms. This protein facilitates the exchange of GDP for GTP on Rac1, allowing the GTP-bound Rac1 to activate downstream effectors. Studies also show that the pleckstrin homology domain of this protein interacts with the phosphatase and tensin homolog (PTEN) gene product to inhibit PTEN phosphatase activity, thus activating the phosphoinositide-3 kinase (PI3K) signaling pathway. Conversely, the PTEN gene product has also been shown to inhibit the GEF activity of this protein. This gene plays a role in insulin-signaling pathways, and either mutations or overexpression of this gene have been observed in some cancers. [provided by RefSeq, Apr 2016]

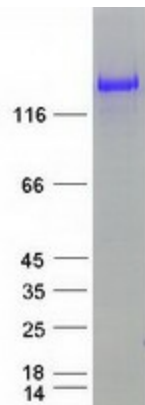
Product images:



Circular map for RC223671



Western blot validation of overexpression lysate (Cat# [LY411034]) using anti-DDK antibody (Cat# [TA50011-100]). Left: Cell lysates from un-transfected HEK293T cells; Right: Cell lysates from HEK293T cells transfected with RC223671 using transfection reagent MegaTran 2.0 (Cat# [TT210002]).



Coomassie blue staining of purified PREX2 protein (Cat# [TP323671]). The protein was produced from HEK293T cells transfected with PREX2 cDNA clone (Cat# RC223671) using MegaTran 2.0 (Cat# [TT210002]).