

Product datasheet for **RC223669**

FBXO46 (NM_001080469) Human Tagged ORF Clone

Product data:

Product Type:	Expression Plasmids
Product Name:	FBXO46 (NM_001080469) Human Tagged ORF Clone
Tag:	Myc-DDK
Symbol:	FBXO46
Synonyms:	20D7-FC4; Fbx46; FBXO34L
Mammalian Cell Selection:	Neomycin
Vector:	pCMV6-Entry (PS100001)
E. coli Selection:	Kanamycin (25 ug/mL)



[View online »](#)

ORF Nucleotide Sequence:

>RC223669 representing NM_001080469
 Red=Cloning site Blue=ORF Green=Tags(s)

TTTTGTAATACGACTCACTATAGGGCGGCCGGGAATTCGTCGACTGGATCCGGTACCGAGGAGATCTGCC
 GCC**CGGATCGCC**

ATGGACCGTGGGAGCCTCTGCCCTTCCAGCTATGGTGCCCCGGCCCTTGGCACCTACTCACAGAACC
 AGCCACGCCCGCCTTCTGCGGCCCTCAAGCCATCAGCCTGCCCTGAGCCTGGTGGCGGGCCGAGCCAGA
 CCATGGGCCTGCCCACTCAGAGAACACACCACCCGCCCTGGCCACTGAGGTCCCTGCCTCCAGCCGGCT
 CCGCTCCTCTCAGCAGCAGCTGCTGGTATGAGGGTTCGAGTCTCCTGGACACGTGGTATGTCATCAAGC
 CCGGGAATACAAAGGAGAAGGTGGCCTTCTTTGTGGCCACCAGTGTGGTGGGGCAGCCGGGCCAGCTC
 CATGAAGTCAAGGGGCACTGGGCGAGCATAGCTCCAAGGCCAAGCGCGGAGGCGCTGTCTTGACCCC
 ACCAAGGCTCCTCTGACCCAGGGGGCCGGAGGGCCCCCTGCTGCTGAGGAGGGCCCCGCTCAGCCG
 GTGAGGACGTGGACCTGCTCTGTGGCCGAGATGGTGGCCCTGGTGAACAGCGGGCAGCCCTGGCCCT
 GCAGAGCTACCCACGACCACCACCCAGCCCTGTAGTCTTTGTGTCCGCCGAGCAAGGTGGACCGGCC
 AAGGGGTGGGATCTGAACGGCGGTCCGGTGGTGGGGACTGCAGCCGTGTAGCCGAGCCGTGGCCCACT
 TTGAAGCGCAGAGGGACAGCCCTCCCAACCAAGGGCCTCCGCAAGGAAGAGCGGCCCGGGCCAGGCCCTGG
 GGAGGTGCGCATCGCCTTCCGCATCTCCAACGGCCGGGAGCCCCGTGCACCAGACAGCGCCCTGCCAGT
 GGGGGCGGGGACAGCCCTGGTTGTGCCTACCCTGGCAGCCAGGTCTGGGGCCGAGCCAAGGACAAGA
 TCACATGTGACTTATACCAGTCTCAGCCCTCGCGGGATGCCCTCCCAAGCAAGTGGAGTTCCTGCT
 GGCCAGGGCGGATGAGGCCAGTGGGGTACAGCCCGCACCCGCGAGCCCTGAGGACACTCCCCGGCG
 CCCCTCCGCCCTGCCCGGACTGCGGAGCGTCAGGCTTCCAGTGGACGTGGTGGTACGGGGCGTGG
 TAGTAGTGCATCTTTTGGCAAGGACGGCACCAAGAAGTGAAGGAGGAGACTGTGTGCTGACGGT
 CAGCCCGAGGAACCGCCCTCCGGGCCAGCTCTTTCTCCAGAACCAGCGGGCCGGACGGGGCCCCCG
 GAGCCACCCCGCCGACTCCCCGGCCACTGCGCCCGGCCAGACGATGCCGAGGGCACGGCGGACACCT
 CCCTGTGCCGCTGTACCGGCACGTGTGCGACGACTTCTAGAGATCCGCTTCAAGATTCAGCGGTGCT
 GGAGCCGCGACAGTACATGCTGCTGCTGCCGAGCAGTGTGGTCAAGATCTTCAGTCTCTGCCACG
 CGCGCGTGGCCGCCCTCAAGTGCACCTGCCACACTTCAAGGGCATCATCGAGGCGTTTGGCGTGGGG
 CCACAGACTCGCGCTGGAGCCGAGACCCGCTCTACCGGATGATCCGTGCAAACAGTGGCCGAAGAGATA
 CGAGAAGGGGACGTGTCGCTCTGCCGTTGGCACCCCAAGCCCTACCACCATGACCTGCCTACGGACGT
 TCCTACTGGATGTGCTGCCGTCGAGCCGACCGGAGACTCCCGGCTGCCGCTGGCCCTCCACGATAACA
 ACTGGGTGCTGCCCTGCAATGGGCCAGGCGGGGGCCGGCCGGCGGGAGGAGGGGAGG

ACGCGTACGCGGGCCGCTCGAGCAGAAACTCATCTCAGAAGAGGATCTGGCAGCAAATGATATCCTGGATT
 ACAAGGATGACGACGATAAGGTTTAA

Protein Sequence:

>RC223669 representing NM_001080469
 Red=Cloning site Green=Tags(s)

MDRGSLLPFQLWCPRPFGTYSQNQPRPPSAALKPSACPEPGGAEPDHGAHSENTPPALATEVPASQPA
 PLLSAAAAGDEGRVLLDTWYVIKPGNTKEKVAFFVAHQCGGSRASSMKVKGHWGSDDSSAKRRRRCLDP
 TKAPPDPGGREGPPAAEEGPASAGEDVDLLSVAEMVALVEQRAALALQSYPRPTTAPVVFVSAEQGGPA
 KGVGSERRSGGDCSRVAEAVAHFQAQRDSPPTKGLRKEERP GPGPEVRIAFRISNGREPRAPDSGLPS
 GGGRRPGCAYPGSPGPGARAKDKITCDLYQLISPSRDALPSNVEFLLARADEASEGDSAPARPEDTPPA
 PPPPPARDCGASGFHVDVVVTGVVDECIFFGKDGTKNVKEETVCLTVSPEPPPPGQLFFLQNRGPDGPP
 EPPPADSPATAPGDDAEGTADTSLCRLYRHVSHDFLEIRFKIQRLLLEPRQYMLLLPEHVLVKIFSFLLPT
 RALAALKCTCHHFKGIIEAFGVRATDSRWSRDPLYRDDPKQCRKRYEKGDVSLCRWHPKPYHHDLPYGR
 SYWMCCRADRETPGCRLGLHDNNWVLPNGPGGGRAGREEGR

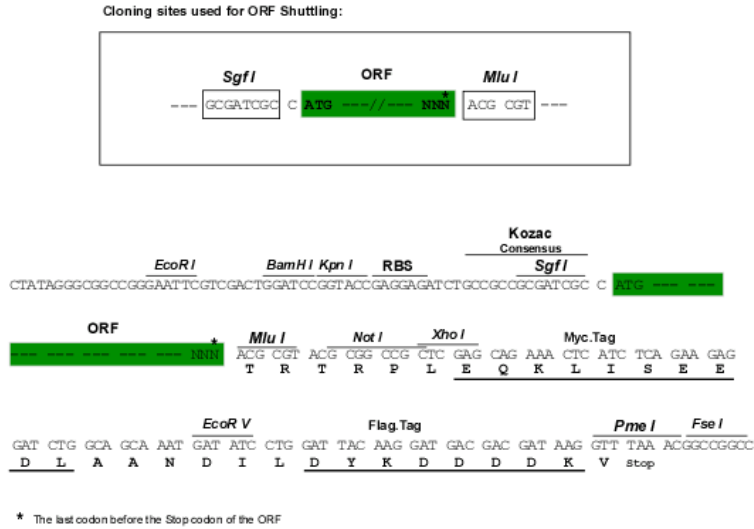
TRTRPLEQKLISEEDLAANDILDYKDDDDDKV

Chromatograms:

https://cdn.origene.com/chromatograms/mk8046_f06.zip

Restriction Sites: SgfI-MluI

Cloning Scheme:



ACCN: NM_001080469

ORF Size: 1809 bp

OTI Disclaimer: The molecular sequence of this clone aligns with the gene accession number as a point of reference only. However, individual transcript sequences of the same gene can differ through naturally occurring variations (e.g. polymorphisms), each with its own valid existence. This clone is substantially in agreement with the reference, but a complete review of all prevailing variants is recommended prior to use. [More info](#)

OTI Annotation: This clone was engineered to express the complete ORF with an expression tag. Expression varies depending on the nature of the gene.

Components: The ORF clone is ion-exchange column purified and shipped in a 2D barcoded Matrix tube containing 10ug of transfection-ready, dried plasmid DNA (reconstitute with 100 ul of water).

- Reconstitution Method:
1. Centrifuge at 5,000xg for 5min.
 2. Carefully open the tube and add 100ul of sterile water to dissolve the DNA.
 3. Close the tube and incubate for 10 minutes at room temperature.
 4. Briefly vortex the tube and then do a quick spin (less than 5000xg) to concentrate the liquid at the bottom.
 5. Store the suspended plasmid at -20°C. The DNA is stable for at least one year from date of shipping when stored at -20°C.

RefSeq: [NM_001080469.2](#)

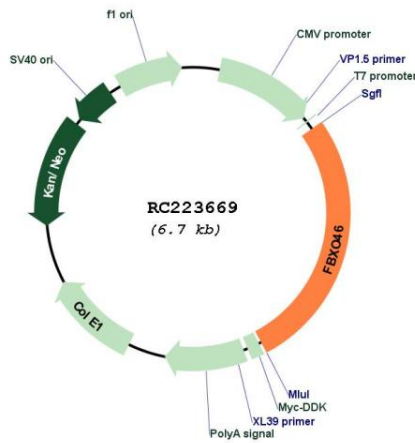
RefSeq Size: 2990 bp

RefSeq ORF: 1812 bp

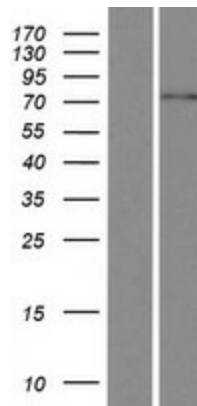
Locus ID: 23403

UniProt ID: [Q6PJ61](#)
Cytogenetics: 19q13.32
Protein Families: Druggable Genome
MW: 64.5 kDa
Gene Summary: Members of the F-box protein family, such as FBXO46, are characterized by an approximately 40-amino acid F-box motif. SCF complexes, formed by SKP1 (MIM 601434), cullin (see CUL1; MIM 603134), and F-box proteins, act as protein-ubiquitin ligases. F-box proteins interact with SKP1 through the F box, and they interact with ubiquitination targets through other protein interaction domains (Jin et al., 2004 [PubMed 15520277]).[supplied by OMIM, Mar 2008]

Product images:



Circular map for RC223669



Western blot validation of overexpression lysate (Cat# [LY420726]) using anti-DDK antibody (Cat# [TA50011-100]). Left: Cell lysates from untransfected HEK293T cells; Right: Cell lysates from HEK293T cells transfected with RC223669 using transfection reagent MegaTran 2.0 (Cat# [TT210002]).