

Product datasheet for **RC223659**

CCDC83 (NM_173556) Human Tagged ORF Clone

Product data:

Product Type:	Expression Plasmids
Product Name:	CCDC83 (NM_173556) Human Tagged ORF Clone
Tag:	Myc-DDK
Symbol:	CCDC83
Synonyms:	CT148; HSD9; KP-CoT-23
Mammalian Cell Selection:	Neomycin
Vector:	pCMV6-Entry (PS100001)
E. coli Selection:	Kanamycin (25 ug/mL)



[View online »](#)

ORF Nucleotide Sequence:

>RC223659 representing NM_173556
 Red=Cloning site Blue=ORF Green=Tags(s)

TTTTGTAATACGACTCACTATAGGGCGGCCGGAATTCGTCGACTGGATCCGGTACCGAGGAGATCTGCC
 GCC**CGCATCGCC**

ATGAAAACTCAGGAAAGCAAATAAAAAGGATACACATGACGGGCCACAAAAGAAATTAAGTGCCTA
 CCAGTGAAGCACTTCTAGACTATCAATGTCAAATAAAGGAAGATGCCGTGAGCAATTCATGTTTCAAAT
 AAAGACACTTAGGAAAAAGAACCAAAAATATCATGAAAGAAATAGCCGCTTAAAAAGAAGAACAGATTGG
 CACATACGGCATCTACTAAAGGAACTGAGTGAAGAGAAGGCAGAGGGATTGCCAGTTGTAACAAGAGAGG
 ATGTTGAAGAAGCGATGAAGGAAAAATGGAAGTTTGAAGAGACCAGGAAAAAACTTGAGAGATATGCC
 CATGCAAATAAGTAATGCTGAGAACTATTTCTTGAGAACTCAGTAAAAAGGAATTTGGGAGGAGTAC
 AAGAATGTAGGGAGTGAACGACATGCTAAACTCATTACCTCCTTACAAAATGACATCAACACAGTTAAAG
 AGAATGCAGAGAAAAATGCAGAACACTATAAAATCACTCTGGAAGATACTAGAAAAGAAAAATCAAGGA
 AACTTTGTGCAACTGGACAAAAGAAGGAATGGGCCACACAGAATGCTGTAAGCTCATTGACAAGGGC
 AGTTATCTAGAGATCTGGGAGAAATGACTGGCTCAAAAAAGAGGTTGCAATTCACAGGAAGGAAGTTGAAG
 AATTAATAAATGCTATTCATGAACTGGAAGCAGAAAAATTTGGTGCTTATTGATCAACTATCCAAGTGTAG
 ACTTGTGGATCTCAAGATACCCAGGTATCCAGTGTACATTCTGTCCCACCTCTAATCCTCGTCATCTG
 CTGCTGCTGCCTTTGGAATCATGTCTAATCTCTGCCAGGCGTTGCTGGCGACTATATCTTACCCAAGCTG
 CTGGACTAGAAGTGCCACCTGAAGAAATGTCTTTGGAATTGCCAGAAACACATATAGAAGAGAAGTCAGA
 ATTGCAACCCACAGAAGTAGAAAGTAGAGACTTGATGTCTCATCAGATGAGAGCACTATCTTACATCTT
 AGTCATGAAAAATGCATCGAAGATCTCCAGTATGTGAAGATAGATAAAGAGGAAAACTCAGGCACAGAGT
 TTGGGGACACTGATATGAAGTACTTACTATATGAGGATGAGAAGGATTTCAAGGATTATGTAAGCTTGGG
 CCCCTGGGAGTGAAGCTTATGAGTGTGGAGAGCAAGAAAAATGCCATTCAATTTTCAAGAGAAGGAAT
 CCAGTCAAACCTCTATAAAGATGTCAGGAGCCAGAAAGCCACATCACATATAAGATGATGAAGTCTTTTC
 TC

ACGCGTACGCGGCCGCTCGAGCAGAACTCATCTCAGAAGAGGATCTGGCAGCAAATGATATCCTGGATT
 ACAAGGATGACGACGATAAGGTTTAA

Protein Sequence:

>RC223659 representing NM_173556
 Red=Cloning site Green=Tags(s)

MENSGKANKKTDHDPPEIKLPTSEALLDYQCQIKEDAVEQFMFQIKTLRKNQKYHERNSRLKEEQIW
 HIRHLLKELSEEKAEGLPVVTRDVEEAMKEKWKFERDQEKNLRDMRMQISNAEKLFLKLESEKEYWEEY
 KNVGSRHAKLITSLQNDINTVKENAEMSEHYKITLEDTRKKI IKETLLQLDQKKEWATQNAVKLIDKG
 SYLEI WENDWLKKEVAIHRKEVEELKNAIHELEAENLVLIDQLSNCRLVDLKIIPRYVPLHSCPTSNPRHL
 LLLPLESCLISARRCWRLYLTAAGLEVPPPEMSLELPETHIEEKSELQPTVEVSRDLMSSDESTILHL
 SHENSIEDLQYVKIDKEENSGTEFGDMDKYLLEYDEKDFKDYVNLGPLGVKLMSVESKMPPIHFQEKEI
 PVKLYKDVRSPEHITYKMMKSFL

TRTRPLEQKLISEEDLAANDILDYKDDDDKV

Chromatograms:

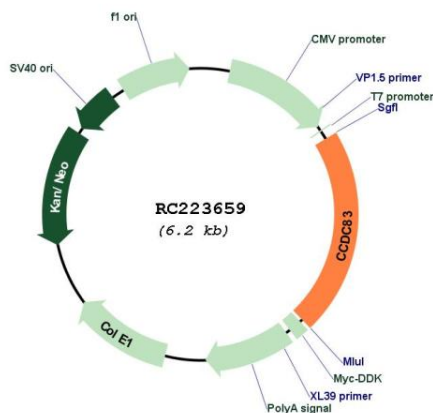
https://cdn.origene.com/chromatograms/mk8046_f09.zip

Restriction Sites:

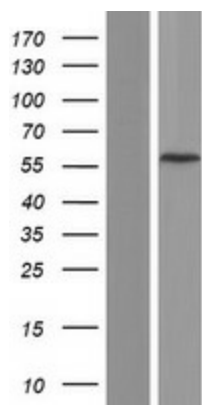
Sgfl-Mlul

UniProt ID: Q8IWF9
Cytogenetics: 11q14.1-q14.2
MW: 52.2 kDa

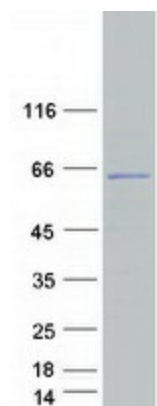
Product images:



Circular map for RC223659



Western blot validation of overexpression lysate (Cat# [LY406467]) using anti-DDK antibody (Cat# [TA50011-100]). Left: Cell lysates from untransfected HEK293T cells; Right: Cell lysates from HEK293T cells transfected with RC223659 using transfection reagent MegaTran 2.0 (Cat# [TT210002]).



Coomassie blue staining of purified CCDC83 protein (Cat# [TP323659]). The protein was produced from HEK293T cells transfected with CCDC83 cDNA clone (Cat# RC223659) using MegaTran 2.0 (Cat# [TT210002]).