

Product datasheet for **RC223658**

Deoxyribonuclease I like 1 (DNASE1L1) (NM_001009934) Human Tagged ORF Clone

Product data:

Product Type:	Expression Plasmids
Product Name:	Deoxyribonuclease I like 1 (DNASE1L1) (NM_001009934) Human Tagged ORF Clone
Tag:	Myc-DDK
Symbol:	Deoxyribonuclease I like 1
Synonyms:	DNAS1L1; DNASEX; DNL1L; G4.8; XIB
Mammalian Cell Selection:	Neomycin
Vector:	pCMV6-Entry (PS100001)
E. coli Selection:	Kanamycin (25 ug/mL)
ORF Nucleotide Sequence:	>RC223658 ORF sequence Red=Cloning site Blue=ORF Green=Tags(s)

TTTTGTAATACGACTCACTATAGGGCGGCCGGAATTCGTCGACTGGATCCGGTACCGAGGAGATCTGCC
GCC**CGGATCGCC**

ATGCACTACCCAACCTGCACTCCTCCTCATCCTGGCCAATGGGGCCAGGCCTTTCGCATCTGCGCCT
TCAATGCCAGCGGCTGACACTGGCCAAGGTGGCCAGGGAGCAGGTGATGGACACCTTAGTTCGGATACT
GGCTCGTGTGACATCATGGTGTGCAGGAGGTGGTGGACTCTCCGGCAGCGCCATCCCCTCCTGCTT
CGAGAACTCAATCGATTTGATGGCTCTGGGCCCTACAGCACCCCTGAGCAGCCCCAGCTGGGGCGCAGCA
CCTACATGGAGACGTATGTGACTTCTATCGGTACACAAAACACAGGTCCTGAGTTCCTACGTGTACAA
CGATGAGGATGACGTCTTTGCCCGGAGCCATTTGTGGCCAGTTCTCTTTGCCAGCAATGTCTTCCC
AGCCTGGTGTGGTCCCCTGCACACCCTCCTAAGGCCGTAGAGAAGGAGCTGAACGCCCTCTACGATG
TGTTTCTGGAGGTCTCCAGCACTGGCAGAGCAAGGACGTGATCCTGCTTGGGGACTTCAATGCTGACTG
CGCTTCACTGACCAAAAAGCGCCTGGACAAGCTGGAGCTGCGGACTGAGCCAGGCTTCCACTGGGTGATT
GCCGATGGGGAGGACACCACAGTGGGGCCAGCACCCACTGCACCTATGACCGCTCGTGTGCACGGGG
AGCGCTGCCGGAGTCTGCTGCACACTGCGGCTGCCTTTGACTTCCCACGAGCTTCCAGCTACCCGAGGA
GGAGGCCCTCAACATCAGTGACCACTACCCCGTGGAGGTGGAGCTGAAGCTGAGCCAGGCCACAGCGTC
CAGCCTCTCAGCCTCACTGTTCTGTTGCTGCTATCACTCCTGTCCCCTCAGCTGTGCCCTGCTGCC

ACGCGTACGCGGCCGCTCGAGCAGAAACTCATCTCAGAAGAGGATCTGGCAGCAAATGATATCCTGGATT
ACAAGGATGACGACGATAAGGTTAA



[View online »](#)

Protein Sequence: >RC223658 protein sequence
Red=Cloning site Green=Tags(s)

MHYPTALLFLILANGAQAFRICAFAQAQLTLAKVAREQVMDTLVRILARCDIMVLQEVVDSSGSAIPLLL
 RELNRFDGGSPYSTLSSPQLGRSTYMETVYVYFYSRHKTVLSSVYVNDVDFAREPFVAQFSLPSNVLP
 SLVLPVPLHTTPKAVEKELNALYDFVLEVSQHWQSKDVILLGDFNADCASLTKKRLDKLELRTEPGFHWVI
 ADGEDTTVRASTHCTYDRVVLHGRCRSLLLHTAAAFDFPTSFQLTEEEALNISDHYPVEVELKLSQAHSV
 QPLSLTVLLLLLSPQLCPAA

TRTRPLEQKLISEEDLAANDILDYKDDDDKV

Chromatograms: https://cdn.origene.com/chromatograms/mk6333_a04.zip

Restriction Sites: SgfI-MluI

Cloning Scheme:



ACCN: NM_001009934

ORF Size: 906 bp

OTI Disclaimer: The molecular sequence of this clone aligns with the gene accession number as a point of reference only. However, individual transcript sequences of the same gene can differ through naturally occurring variations (e.g. polymorphisms), each with its own valid existence. This clone is substantially in agreement with the reference, but a complete review of all prevailing variants is recommended prior to use. [More info](#)

OTI Annotation: This clone was engineered to express the complete ORF with an expression tag. Expression varies depending on the nature of the gene.

Components: The ORF clone is ion-exchange column purified and shipped in a 2D barcoded Matrix tube containing 10ug of transfection-ready, dried plasmid DNA (reconstitute with 100 ul of water).

Reconstitution Method:

1. Centrifuge at 5,000xg for 5min.
2. Carefully open the tube and add 100ul of sterile water to dissolve the DNA.
3. Close the tube and incubate for 10 minutes at room temperature.
4. Briefly vortex the tube and then do a quick spin (less than 5000xg) to concentrate the liquid at the bottom.
5. Store the suspended plasmid at -20°C. The DNA is stable for at least one year from date of shipping when stored at -20°C.

RefSeq: [NM_001009934.2](#), [NP_001009934.1](#)

RefSeq Size: 2665 bp

RefSeq ORF: 909 bp

Locus ID: 1774

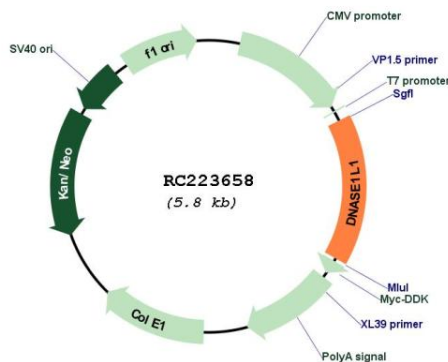
UniProt ID: [P49184](#)

Cytogenetics: Xq28

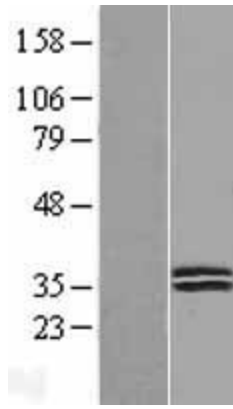
MW: 33.9 kDa

Gene Summary: This gene encodes a deoxyribonuclease protein that shows high sequence similarity to DNase I. The encoded protein is localized to the endoplasmic reticulum and modified by N-linked glycosylation. Alternate transcriptional splice variants encoding the same protein have been observed. [provided by RefSeq, Jan 2015]

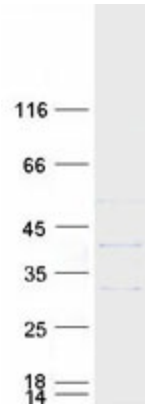
Product images:



Circular map for RC223658



Western blot validation of overexpression lysate (Cat# [LY423157]) using anti-DDK antibody (Cat# [TA50011-100]). Left: Cell lysates from untransfected HEK293T cells; Right: Cell lysates from HEK293T cells transfected with RC223658 using transfection reagent MegaTran 2.0 (Cat# [TT210002]).



Coomassie blue staining of purified DNASE1L1 protein (Cat# [TP323658]). The protein was produced from HEK293T cells transfected with DNASE1L1 cDNA clone (Cat# RC223658) using MegaTran 2.0 (Cat# [TT210002]).