

Product datasheet for **RC223645**

Ribosomal protein S11 (RPS11) (NM_001015) Human Tagged ORF Clone

Product data:

Product Type: Expression Plasmids
Product Name: Ribosomal protein S11 (RPS11) (NM_001015) Human Tagged ORF Clone
Tag: Myc-DDK
Symbol: Ribosomal protein S11
Synonyms: S11
Mammalian Cell Selection: Neomycin
Vector: pCMV6-Entry (PS100001)
E. coli Selection: Kanamycin (25 ug/mL)
ORF Nucleotide Sequence: >RC223645 representing NM_001015
Red=Cloning site Blue=ORF Green=Tags(s)

TTTTGTAATACGACTCACTATAGGGCGGCCGGAATTCGTCGACTGGATCCGGTACCGAGGAGATCTGCC
GCC**CGATCGCC**

ATGGCGGACATTCAGACTGAGCGTGCTACCAAAAGCAGCCGACCATCTTCAAACAAGAAGAGGGTCC
TGCTGGGAGAACTGGCAAGGAGAAGCTCCCGGGTACTACAAGAACATCGGTCTGGGCTCAAGACACC
CAAGGAGGCTATTGAGGGCACCTACATTGACAAGAAATGCCCTTCACTGGTAATGTGTCCATTCGAGGG
CGGATCCTCTCTGGCGTGGTACCAAGATGAAGATGCAGAGGACCATTGTCATCCGCCGAGACTATCTGC
ACTACATCCGCAAGTACAACCGCTTCGAGAAGCGCCACAAGAACATGTCTGTACACTGTCCCCCTGCTT
CAGGGACGTCCAGATCGGTGACATCGTCACAGTGGCGGAGTGCCGGCCTCTGAGCAAGACAGTGGCGTTC
AACGTGCTCAAGGTCACCAAGGCTGCCGGCACCAAGAAGCAGTCCAGAAGTTC

ACGCGTACGCGGCCGCTCGAGCAGAACTCATCTCAGAAGAGGATCTGGCAGCAAATGATATCCTGGATT
ACAAGGATGACGACGATAAGGTTTAA

Protein Sequence: >RC223645 representing NM_001015
Red=Cloning site Green=Tags(s)
MADIQTERAYQKQPTIFQNKRVLLGETGKEKLPRYYKNIIGLGFKTPKEAIEGTYIDKKCPFTGNVSIRG
RILSGVVTMKMQRTIVIRRDYLHYIRKYNRFKRNHKNMSVHLSPCFRDVQIGDIVTVEGRPLSKTVRF
NVLKVTKAAGTKKQFQKF

TRTRPLEQKLISEEDLAANDILDYKDDDDKV

Chromatograms: https://cdn.origene.com/chromatograms/ja1454_e09.zip



[View online »](#)

Restriction Sites: SgfI-MluI

Cloning Scheme:



ACCN: NM_001015

ORF Size: 474 bp

OTI Disclaimer: The molecular sequence of this clone aligns with the gene accession number as a point of reference only. However, individual transcript sequences of the same gene can differ through naturally occurring variations (e.g. polymorphisms), each with its own valid existence. This clone is substantially in agreement with the reference, but a complete review of all prevailing variants is recommended prior to use. [More info](#)

OTI Annotation: This clone was engineered to express the complete ORF with an expression tag. Expression varies depending on the nature of the gene.

Components: The ORF clone is ion-exchange column purified and shipped in a 2D barcoded Matrix tube containing 10ug of transfection-ready, dried plasmid DNA (reconstitute with 100 ul of water).

Reconstitution Method:

1. Centrifuge at 5,000xg for 5min.
2. Carefully open the tube and add 100ul of sterile water to dissolve the DNA.
3. Close the tube and incubate for 10 minutes at room temperature.
4. Briefly vortex the tube and then do a quick spin (less than 5000xg) to concentrate the liquid at the bottom.
5. Store the suspended plasmid at -20°C. The DNA is stable for at least one year from date of shipping when stored at -20°C.

RefSeq: [NM_001015.5](#)

RefSeq Size: 641 bp

RefSeq ORF: 477 bp

Locus ID: 6205

UniProt ID: [P62280](#)

Cytogenetics: 19q13.33

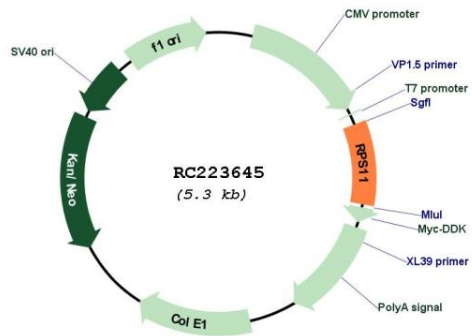
Domains: Ribosomal_S17

Protein Pathways: Ribosome

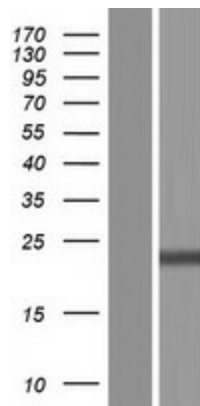
MW: 18.3 kDa

Gene Summary: Ribosomes, the organelles that catalyze protein synthesis, consist of a small 40S subunit and a large 60S subunit. Together these subunits are composed of 4 RNA species and approximately 80 structurally distinct proteins. This gene encodes a member of the S17P family of ribosomal proteins that is a component of the 40S subunit. This gene is co-transcribed with the small nucleolar RNA gene U35B, which is located in the third intron. As is typical for genes encoding ribosomal proteins, there are multiple processed pseudogenes of this gene dispersed throughout the genome. [provided by RefSeq, Jul 2012]

Product images:



Circular map for RC223645



Western blot validation of overexpression lysate (Cat# [LY423108]) using anti-DDK antibody (Cat# [TA50011-100]). Left: Cell lysates from untransfected HEK293T cells; Right: Cell lysates from HEK293T cells transfected with RC223645 using transfection reagent MegaTran 2.0 (Cat# [TT210002]).