

Product datasheet for **RC223636**

Lipolysis Stimulated Lipoprotein Receptor (LSR) (NM_015925) Human Tagged ORF Clone

Product data:

Product Type:	Expression Plasmids
Product Name:	Lipolysis Stimulated Lipoprotein Receptor (LSR) (NM_015925) Human Tagged ORF Clone
Tag:	Myc-DDK
Symbol:	Lipolysis Stimulated Lipoprotein Receptor
Synonyms:	ILDR3; LISCH7
Mammalian Cell Selection:	Neomycin
Vector:	pCMV6-Entry (PS100001)
E. coli Selection:	Kanamycin (25 ug/mL)



[View online »](#)

ORF Nucleotide Sequence:

>RC223636 representing NM_015925
 Red=Cloning site Blue=ORF Green=Tags(s)

TTTTGTAATACGACTCACTATAGGGCGGCCGGGAATTCGTCGACTGGATCCGGTACCGAGGAGATCTGCC
 GCC**CGGATCGCC**

ATGCAACAGGACGGACTTGGAGTAGGGACAAGGAACGGAAGTGGGAAGGGGAGGAGCGTGCACCCCTCT
 GGCTTGGTGCGCGCCGCGCCCTAAGTACTTTGGAAGGACGCGCGGCCAGACGCGCCAGACGGC
 CGCGATGGCGCTGTTGGCCGGCGGGCTCTCCAGAGGGCTGGGCTCCACCCGGCCGCCGAGGCCGGAC
 GCGGTCTGTTGCTGGCTTCTGCTTAGCACCTGGTGCACAGCTCTGCCAGGGCCATCCAGGTGACCG
 TGTCCAACCCCTACCACGTGGTATCCTTCCAGCCTGTGACCTGCCCTGTACCTACCAGATGACCTC
 GACCCCAACGCAACCCATCGTCACTGGAAGTACAAGTCTTTCTGCCGGGACCGCATCGCCGATGCCTTC
 TCCCCGGCAGCGTCGACAACCAGCTCAATGCCAGCTGGCAGCCGGGAACCCAGGCTACAACCCCTACG
 TTGAGTGCCAGGACAGCGTGCACCCGTGAGGTCGTGGCCACCAAGCAGGGCAACGCTGTGACCTGGG
 AGATTACTACCAGGGCCGGAGGATTACCATCACCGGAAATGCTGACCTGACCTTTGACCAGACGGCGTGG
 GGGGACAGTGGTGTATTACTGCTCCGTGGTCTCAGCCAGGACCTCCAGGGGAACAATGAGGCCCTACG
 CAGAGCTCATCGTCTTACTGGCTCTTCTGTTGTGGTATGCCTGGCTGCCTTCTCATCTTCTCTCT
 CCTGGGCATCTGCTGGTGCAGTGTGCCCGCACACTTGTGCTGCTACGTGACCTGCCCTGCTGCCCA
 GACAAGTGTGCTGCCCGAGGCCCTGTATGCCCGCGCAAAAGCAGCCACCTCAGGTGTTCCAGCATTT
 ATGCCCCCAGCACCTATGCCACCTGTCTCCCGCAAGACCCACCCCAACAGCTATGATTTCCATGGG
 CCCTGCCTACAACGGGTACCTGGAGGATACCTGGAGACGTTGACAGGAGTAGCTCAGTGGTGGCCAA
 GGCTCCTATGTACCCCTGCTTCGGGACACGACAGCAGTGTGGCTCTGAAGTCCGAGTGGCAACTCGA
 TTCAGGCCAGCCAGCAGGACGACTCCATGCGGGTCTGTACTACATGGAGAAGGAGCTGGCAACTCGA
 CCCTTCTCGACCTGGCCCCCAGTGGCGTGTGGAGCGGGCCATGAGTGAAGTACCTCCCTCCACGAG
 GACGACTGGCGATCTCGCCTTCCCGGGCCCTGCCCTACCCCGATCCGGGATGAGGAGTGGGGTGGCC
 ACTCCCCCGGAGTCCCAGGGGATGGGACCAGGAGCCCGCAGGGAGCAGGCAGGCGGGGCTGGCGGGC
 CAGGCGGCCCCGGGCCCTCCGTGGACGCCCTGGACGACCTACCCCGCCGAGCACCGCCGAGTCAGGG
 AGCAGGTCTCCACGAGTAATGGTGGGAGAAGCCGGGCTACATGCCCGCGGAGCCGACCGGGGACG
 ACCTCTATGACCAAGACGACTCGAGGGACTTCCACGCTCCCGGGACCCCACTACGACGACTTCAGGTC
 TCGGGAGCGCCCTCTGCCGACCCAGGTCACACCACCACGTCACCGGGACCCCTCGGGACAACGGCTCC
 AGGTCCGGGACCTCCCCTATGATGGGCGGCTACTGGAGGAGGCTGTGAGGAAGAAGGGGTGGAGGAGA
 GGAGGAGACCCCAAGGAGGAGGAGGAAGAGGCTACTACCCGCCCCGCGCCGCCCTACTCGGAGAC
 CGACTCGCAGGCGTCCCGAGAGCGCAGGCTCAAGAAGAATTGGCCCTGAGTCGGGAAAGTTTATGTCGT

ACGCGTACGCGGCCGCTCGAGCAGAACTCATCTCAGAAGAGGATCTGGCAGCAATGATATCCTGGATT
 ACAAGGATGACGACGATAAGGTTAA

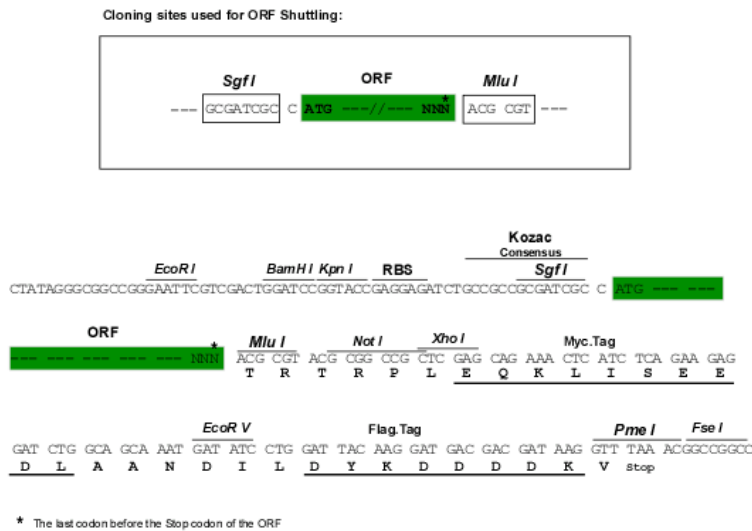
Protein Sequence:

>RC223636 representing NM_015925
 Red=Cloning site Green=Tags(s)

MQQDGLGVGTRNGSGKGRSVHPSWPWCAPRPLRYFGRDARARRAQTAAALLAGGLSRGLGSHPAAGR
 AVVFWLLLSTWCTAPARAIQVTVSNPYHVILFQPVTLPCTYQMTSTPTQPIVIWKYSFCRDRIDAF
 SPASVDNQLNAQLAAGNPGYNPYVEQCDSVRTVRVATKQGNVTLGDYYQRRITITGNADLTFDQTAW
 GDSGVYYCSVVSQDLQGNNEAYAELIVLDWLFVVVCLAAFLIFLLLGICWCQCCPHTCCCYVRCPCP
 DKCCCPEALYAAGKAATSGVPSIYAPSTY AHL SPAKTPPPAMIPMPGAYNGYPGGYPGDVRSSSAGGQ
 GSYVPLLRDTSVASEVRSYRIQASQDDSMRVLYMEKELANFDPSRPGPPSGRVERAMSEVTLHE
 DDWRSRPSRGPALTPIRDEEWGGHSPRSPRGWDQEPAREQAGGWRARRPRARSVDALDDLTPPSTAESG
 SRSPTSNGGRSRAYMPPRSRSDLDYDQDSRDFPRSRDPHYDDFRSRERPPADPRSHHHRTRDPRDNGS
 RSGDLPYDGRLLLEAVRKKGSEERRRPHKEEEEEAYYPPAPPYSETDSQASRERRLKKNLALSRESLTV

TRTRPLEQKLISEEDLAANDILDYKDDDDKV

Chromatograms: https://cdn.origene.com/chromatograms/mg4028_d09.zip
 Restriction Sites: SgfI-MluI
 Cloning Scheme:



ACCN: NM_015925
 ORF Size: 1890 bp

OTI Disclaimer: The molecular sequence of this clone aligns with the gene accession number as a point of reference only. However, individual transcript sequences of the same gene can differ through naturally occurring variations (e.g. polymorphisms), each with its own valid existence. This clone is substantially in agreement with the reference, but a complete review of all prevailing variants is recommended prior to use. [More info](#)

OTI Annotation: This clone was engineered to express the complete ORF with an expression tag. Expression varies depending on the nature of the gene.

Components: The ORF clone is ion-exchange column purified and shipped in a 2D barcoded Matrix tube containing 10ug of transfection-ready, dried plasmid DNA (reconstitute with 100 ul of water).

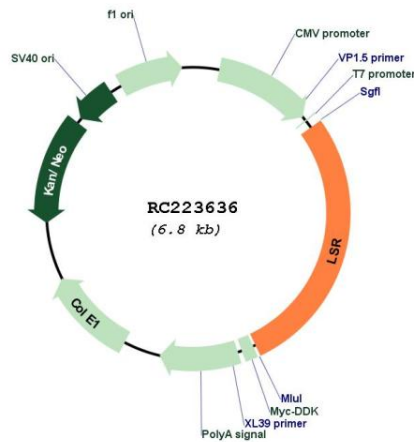
- Reconstitution Method:
1. Centrifuge at 5,000xg for 5min.
 2. Carefully open the tube and add 100ul of sterile water to dissolve the DNA.
 3. Close the tube and incubate for 10 minutes at room temperature.
 4. Briefly vortex the tube and then do a quick spin (less than 5000xg) to concentrate the liquid at the bottom.
 5. Store the suspended plasmid at -20°C. The DNA is stable for at least one year from date of shipping when stored at -20°C.

Note: Plasmids are not sterile. For experiments where strict sterility is required, filtration with 0.22um filter is required.

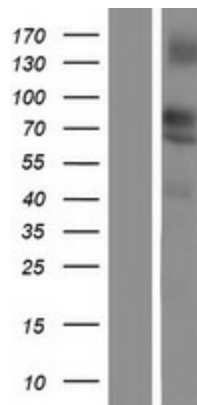
RefSeq: [NM_015925.6](#), [NP_057009.3](#)
 RefSeq Size: 2228 bp

RefSeq ORF:	1749 bp
Locus ID:	51599
UniProt ID:	Q86X29
Cytogenetics:	19q13.12
Domains:	IG
Protein Families:	Druggable Genome, Transcription Factors, Transmembrane
MW:	69.4 kDa
Gene Summary:	Probable role in the clearance of triglyceride-rich lipoprotein from blood. Binds chylomicrons, LDL and VLDL in presence of free fatty acids and allows their subsequent uptake in the cells (By similarity).[UniProtKB/Swiss-Prot Function]

Product images:



Circular map for RC223636



Western blot validation of overexpression lysate (Cat# [LY414326]) using anti-DDK antibody (Cat# [TA50011-100]). Left: Cell lysates from untransfected HEK293T cells; Right: Cell lysates from HEK293T cells transfected with RC223636 using transfection reagent MegaTran 2.0 (Cat# [TT210002]).