

## Product datasheet for **RC223629**

### **NOR1 (NR4A3) (NM\_173200) Human Tagged ORF Clone**

#### **Product data:**

Product Type:	Expression Plasmids
Product Name:	NOR1 (NR4A3) (NM_173200) Human Tagged ORF Clone
Tag:	Myc-DDK
Symbol:	NOR1
Synonyms:	CHN; CSMF; MINOR; NOR1
Mammalian Cell Selection:	Neomycin
Vector:	pCMV6-Entry (PS100001)
E. coli Selection:	Kanamycin (25 ug/mL)



[View online »](#)

ORF Nucleotide  
Sequence:

>RC223629 representing NM\_173200  
Red=Cloning site Blue=ORF Green=Tags(s)

TTTTGTAATACGACTCACTATAGGGCGGCCGGAATTCGTCGACTGGATCCGGTACCGAGGAGATCTGCC  
GCCGCGATCGCC

ATGCATGACTCAATCAGATTTGAAATGTGGATATGCCCTGCGTCCAAGCCAATATAGCCCTTCCCTC  
CAGGTTCCAGTTATGCGGCGCAGACATACAGCTCGGAATACACCACGGAGATCATGAACCCGACTACAC  
CAAGCTGACCATGGACCTTGGCAGCACTGAGATCACGGCTACAGCCACCACGTCCCTGCCAGCATCAGT  
ACCTTCGTGGAGGGCTACTCGAGCAACTACGAACTCAAGCCTTCTGCGTGTACCAAATGCAGCGGCCCT  
TGATCAAAGTGGAGGAGGGGCGGCCAGCTACCATCACCATCACACCACCACCACCACCACCACCACCA  
CCATCACAGCAGCAGCATCAGCAGCCATCCATTCTCCAGCCTCCAGCCCGGAGGACGAGGTGCTGCC  
AGCACCTCCATGTACTTCAAGCAGTCCCACCGTCCACCCACCACGCGGCCCTTCCCCCGCAGGCGG  
GGGCGTTATGGGACGAGGCACTGCCCTCGGCGCCCGGCTGCATCGCACCCGGCCCGCTGCTGGACCCGCC  
GATGAAGCGGGTCCCACGGTGGCCGGCGCGCTTCCGCTTCCACTTCAAGCCTCGCCGCGCAT  
CCCCCGCGCCAGCCCGGCCGGCCACCACCTCGGCTACGACCCGACGGCCGCTGCCGCGCTAGCC  
TGCCGCTGGGAGCCGAGCCGCGCGGGCAGCCAGGCCGCGCGCTTGAGAGCCACCCGTACGGGCTGCC  
GCTGGCAAGAGGGCGGCCCGCTGGCCTTCCGCTTCTCGGCTCACGCCCTCCCTACCGCTCCAGC  
CTGCTGGGCGAGAGTCCCAGCCTGCCGTCGCGCCAGCAGGAGCTCGTCTGCGGAGGGCAGCTGTG  
CCGTGTGCGGGGACAACGCCCTGCCAGCACTACGGCGTGCAGAACTGCGAGGGCTGCAAGGGCTTTTT  
CAAGAGAACAGTGCAGAAAAATGAAAAATGTTTGCCTGGCAAATAAAAACTGCCAGTAGACAAGAGA  
CGTCGAAACCGATGTCAGTACTGTGATTTGAAAGTGTCTCAGTGTGGAATGGTAAAAGAAGTTGTC  
GTACAGATAGTCTGAAAGGGAGGAGAGGTGCTGCTTCAAACCAAAGAGCCATTACAACAGGAACC  
TTCTCAGCCCTTCCACCTTCTCTCCAATCTGCATGATGAATGCCCTTGTCCGAGCTTTAACAGACTCA  
ACACCCAGAGATCTTGATTATCCAGATACTGTCCCACTGACCAGGCTGCTGCAGGCACAGATGCTGAGC  
ATGTGCAACAATTCTACAACCTCTGACAGCCTCCATTGATGTATCCAGAAGCTGGGCAGAAAAGATTCC  
GGGATTTACTGATCTCCCAAAGAAGATCAGACATTACTTATTGAATCAGCCTTTTTGGAGCTGTTTGT  
CTCAGACTTTCCATCAGGTCAAACACTGCTGAAGATAAGTTTGTGTTCTGCAATGGACTTGTCTGCATC  
GACTTCAGTGCCTTCGTGGATTTGGGAGTGGCTCGACTCTATTAAGACTTTTCCTTAAATTTGCAGAG  
CCTGAACCTTGATATCCAAGCCTTAGCCTGCTGTCAGCACTGAGCATGATCACAGAAAGACATGGGTTA  
AAAGAACCAAAGAGAGTCAAGAGCTATGCAACAAGATACAAGCAGTTTAAAAGACCACCAGAGTAAGG  
GACAGGCTCTGGAGCCCACCGAGTCCAAGTCTGGGTGCCCTGGTAGAACTGAGGAAGATCTGCACCT  
GGGCTCCAGCGCATCTTACCTGAAGCTGGAAGACTGGTGTCTCCACCTTCCATCATTGACAAGCTC  
TTCCTGGACACCTACCTTC

ACGCGTACGCGGCCGCTCGAGCAGAACTCATCTCAGAAGAGGATCTGGCAGCAAATGATATCCTGGATT  
ACAAGGATGACGACGATAAGGTTAA

**Protein Sequence:** >RC223629 representing NM\_173200  
Red=Cloning site Green=Tags(s)

```
MHDSIRFGNVDMPVCVQAQYSPSPGGSSYAAQTYSEYTTIMNPDYTKLTMDLGSTEITATATTSPLSPIS
TFVEGYSSNYELKPCSCVYQMRPLIKVEEGRAPSYHHHHHHHHHHHHHHHHHHHHHHHHHHHHHHHHHH
STSMYFKQSPSTPTTPAFPPQAGALWDEALPSAPGCIAPGPLLDPPMKAVPTVAGARFLFHFKPSPPH
PPAPSPAGGHHLYDPTAAAALSLPLGAAAAAGSQAAALESHPYGLPLAKRAAPLAFPPPLGLTPSPTASS
LLGESPSLPSPPSRSSSGEGTCAVCGDNAACQHYGVRTCEGCKGFFKRTVQKNAKYVCLANKNCPVDKR
RRNRCQYCRFQKCLSVGMVKEVVRTDSLKGRGRRLPSKPKSPLQQEPSQPSPPSPICMNNALVRALTDS
TPRDLDSRYCPTDQAAAGTDAEHVQQFYNLLTASIDVSRSWAEKIPGFTDLPKEDQTLTIESAFLELTV
LRLSIRSNTAEDKFVFCNGLVLRHLQCLRGFGEWLDSEIKDFSLNLQSLNLDIQLACLALSMTITERHGL
KEPKRVEELCNKITSSLKDHQSKGQALEPTESKVLGALVELRKICTLGLQRIFYLKLEDLVSPSSIIDKL
FLDTLFP
```

TRTRPLEQKLISEEDLAANDILDYKDDDDKV

**Restriction Sites:**

SgfI-MluI

**Cloning Scheme:**



**ACCN:** NM\_173200

**ORF Size:** 1911 bp

**OTI Disclaimer:** The molecular sequence of this clone aligns with the gene accession number as a point of reference only. However, individual transcript sequences of the same gene can differ through naturally occurring variations (e.g. polymorphisms), each with its own valid existence. This clone is substantially in agreement with the reference, but a complete review of all prevailing variants is recommended prior to use. [More info](#)

**OTI Annotation:** This clone was engineered to express the complete ORF with an expression tag. Expression varies depending on the nature of the gene.

**Components:** The ORF clone is ion-exchange column purified and shipped in a 2D barcoded Matrix tube containing 10ug of transfection-ready, dried plasmid DNA (reconstitute with 100 ul of water).

**Reconstitution Method:**

1. Centrifuge at 5,000xg for 5min.
2. Carefully open the tube and add 100ul of sterile water to dissolve the DNA.
3. Close the tube and incubate for 10 minutes at room temperature.
4. Briefly vortex the tube and then do a quick spin (less than 5000xg) to concentrate the liquid at the bottom.
5. Store the suspended plasmid at -20°C. The DNA is stable for at least one year from date of shipping when stored at -20°C.

**RefSeq:** [NM\\_173200.2](#)

**RefSeq Size:** 4983 bp

**RefSeq ORF:** 1914 bp

**Locus ID:** 8013

**UniProt ID:** [Q92570](#)

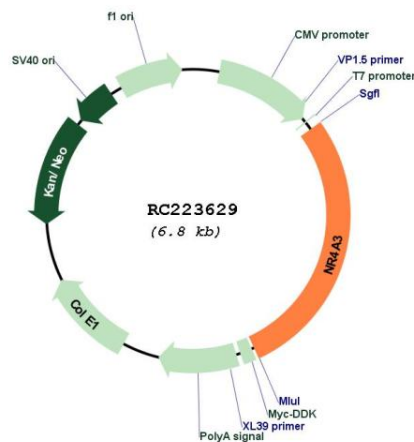
**Cytogenetics:** 9q31.1

**Protein Families:** Druggable Genome, Nuclear Hormone Receptor, Transcription Factors

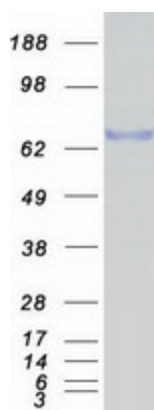
**MW:** 69.3 kDa

**Gene Summary:** This gene encodes a member of the steroid-thyroid hormone-retinoid receptor superfamily. The encoded protein may act as a transcriptional activator. The protein can efficiently bind the NGFI-B Response Element (NBRE). Three different versions of extraskeletal myxoid chondrosarcomas (EMCs) are the result of reciprocal translocations between this gene and other genes. The translocation breakpoints are associated with Nuclear Receptor Subfamily 4, Group A, Member 3 (on chromosome 9) and either Ewing Sarcome Breakpoint Region 1 (on chromosome 22), RNA Polymerase II, TATA Box-Binding Protein-Associated Factor, 68-KD (on chromosome 17), or Transcription factor 12 (on chromosome 15). Multiple transcript variants encoding different isoforms have been found for this gene. [provided by RefSeq, Mar 2010]

### Product images:



Circular map for RC223629



Coomassie blue staining of purified NR4A3 protein (Cat# [TP323629]). The protein was produced from HEK293T cells transfected with NR4A3 cDNA clone (Cat# RC223629) using MegaTran 2.0 (Cat# [TT210002]).