

Product datasheet for RC223624

GAS2 (NM_005256) Human Tagged ORF Clone

Product data:

Product Type:	Expression Plasmids
Product Name:	GAS2 (NM_005256) Human Tagged ORF Clone
Tag:	Myc-DDK
Symbol:	GAS2
Synonyms:	GAS-2
Mammalian Cell Selection:	Neomycin
Vector:	pCMV6-Entry (PS100001)
E. coli Selection:	Kanamycin (25 ug/mL)
ORF Nucleotide Sequence:	>RC223624 ORF sequence Red=Cloning site Blue=ORF Green=Tags(s)

TTTTGTAATACGACTCACTATAGGGCGGCCGGAATTCGTCGACTGGATCCGGTACCGAGGAGATCTGCC
GCC**CGATCGCC**

ATGTGCACTGCTCTGAGCCCAAAGGTACGCAGTGGACCTGGCCTCTCTGATATGCATCAGTATAGCCAAT
GGCTAGCCAGCAGACATGAAGCTAATTTGCTACCAATGAAAGAAGATCTGGCCTTGTGGTTAACCAATCT
ATTAGGGAAGGAGATTACAGCAGAACTTTTATGGAGAAGTTGGACAATGGTGCCTTGTCTGTCAACTT
GCAGAACTATGCAGGAGAAATCAAGGAGAGCATGGATGCTAACAGCCACAAAGAATCTACCGTTGA
AGAAGATCCCATGCAAAACCAGTGCACCCTCGGGCTCCTTTTTTCCAGAGACAATACAGCAAATTTCTT
ATCCTGGTGCCGAGATTTAGGGGTGGATGAAACGTGTCTATTTGAATCGGAAGGTTTGGTCTCCACAAG
CAACCCAGAGAAGTGTGTCTCTGTCTGCTAGAGCTTGGCCGGATTGCAGCCAGGTATGGTGTGGAGCCTC
CTGGTTTGATAAAGCTGGAAAAAGAGATTGAACAAGAAGAACTTTCTGCCCTTCTCCTTACCTTTC
TCCTTCATCAAAGTCTTCTGGAAAAAGAGTACAGGAACTTACTGGATGATGCAGTGAACGAATTTCT
GAAGATCCTCCTTGCAAATGCCAAACAAGTTCTGTGTGGAGCGGCTCTCCCAAGGAAGATACCGAGTGG
GAGAAAAGATCCTCTTCATTAGGATGCTGCACAACAACATGTCATGGTCCGTGTGGGAGGAGGCTGGGA
AACTTTTGAGGGTATTTGTTGAAACACGACCCCTGCCGAATGCTGCAGATCTCCCGTGTGGATGGCAA
ACATCCCTATCAAAGCAAATCTCAAACCTAAAGGACATGAATCCAGATAACTACTTGGTGGTCTCTG
CCAGTTATAAGGCTAAGAAGGAAATTAAG

ACGCGTACGCGGCCGCTCGAGCAGAACTCATCTCAGAAGAGGATCTGGCAGCAAATGATATCCTGGATT
ACAAGGATGACGACGATAAGGTTTAA



[View online »](#)

Protein Sequence: >RC223624 protein sequence
 Red=Cloning site Green=Tags(s)

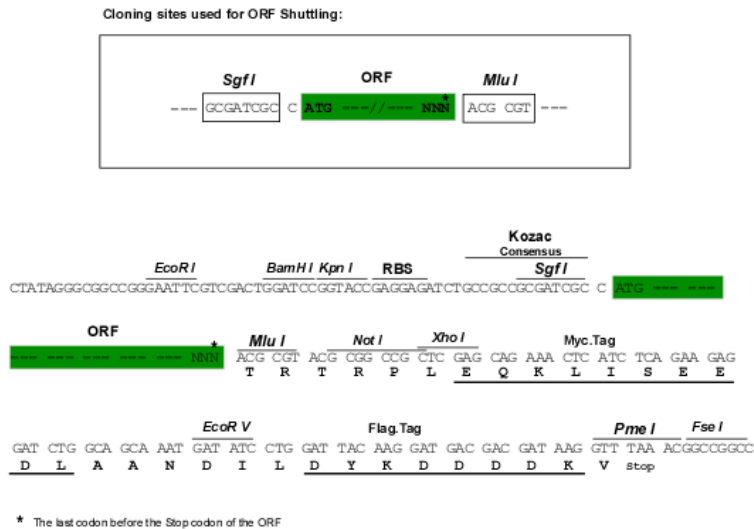
MCTALSPKVRSGPGLSDMHQYSQWLASRHEANLLPMKEDLALWL TNL LGKEITAE TFM EKLDNGALLCQL
 AETMQEKFKESMDANKPTKNLPLKKIPCKTSAPSGSFFARDNTANFLSWCRDLGVD ETC LFESEGLVLHK
 QPREVCLCLELGRIAARYGV EPPGLIKLEKEIEQEETLSAPSPSPSSKSSGKKSTGNLLDDAVKRIS
 EDPPCKCPNKF CVERLSQGRYRVGEKILFIRMLHNKHMVMVRVGGGWETFAGYLLKHDP CRMLQISRVDGK
 TSPIQSKSPTLKDMNPDNYLVVSASYKAKKEIK

TRTRPLEQKLISEEDLAANDILDYKDDDDKVV

Chromatograms: https://cdn.origene.com/chromatograms/mk6550_f12.zip

Restriction Sites: SgfI-MluI

Cloning Scheme:



ACCN: NM_005256

ORF Size: 939 bp

OTI Disclaimer: The molecular sequence of this clone aligns with the gene accession number as a point of reference only. However, individual transcript sequences of the same gene can differ through naturally occurring variations (e.g. polymorphisms), each with its own valid existence. This clone is substantially in agreement with the reference, but a complete review of all prevailing variants is recommended prior to use. [More info](#)

OTI Annotation: This clone was engineered to express the complete ORF with an expression tag. Expression varies depending on the nature of the gene.

Components: The ORF clone is ion-exchange column purified and shipped in a 2D barcoded Matrix tube containing 10ug of transfection-ready, dried plasmid DNA (reconstitute with 100 ul of water).

Reconstitution Method:

1. Centrifuge at 5,000xg for 5min.
2. Carefully open the tube and add 100ul of sterile water to dissolve the DNA.
3. Close the tube and incubate for 10 minutes at room temperature.
4. Briefly vortex the tube and then do a quick spin (less than 5000xg) to concentrate the liquid at the bottom.
5. Store the suspended plasmid at -20°C. The DNA is stable for at least one year from date of shipping when stored at -20°C.

RefSeq: [NM_005256.4](#)

RefSeq Size: 2031 bp

RefSeq ORF: 942 bp

Locus ID: 2620

UniProt ID: [O43903](#)

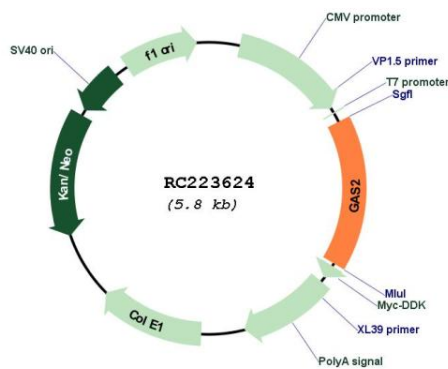
Cytogenetics: 11p14.3

Protein Families: Druggable Genome

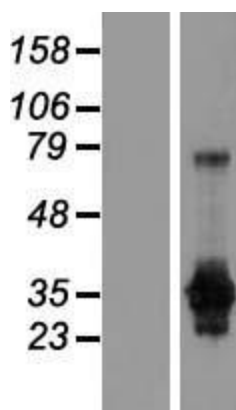
MW: 34.9 kDa

Gene Summary: The protein encoded by this gene is a caspase-3 substrate that plays a role in regulating microfilament and cell shape changes during apoptosis. It can also modulate cell susceptibility to p53-dependent apoptosis by inhibiting calpain activity. Alternative splicing results in multiple transcript variants. [provided by RefSeq, May 2017]

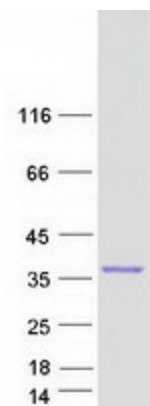
Product images:



Circular map for RC223624



Western blot validation of overexpression lysate (Cat# [LY428373]) using anti-DDK antibody (Cat# [TA50011-100]). Left: Cell lysates from untransfected HEK293T cells; Right: Cell lysates from HEK293T cells transfected with [RC226863] using transfection reagent MegaTran 2.0 (Cat# [TT210002]).



Coomassie blue staining of purified GAS2 protein (Cat# [TP323624]). The protein was produced from HEK293T cells transfected with GAS2 cDNA clone (Cat# RC223624) using MegaTran 2.0 (Cat# [TT210002]).