

Product datasheet for **RC223623L2V**

NMDAR2B (GRIN2B) (NM_000834) Human Tagged ORF Clone Lentiviral Particle

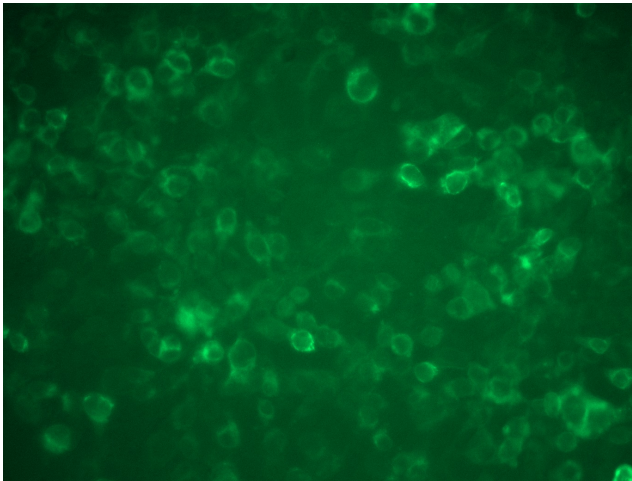
Product data:

Product Type:	Lentiviral Particles
Product Name:	NMDAR2B (GRIN2B) (NM_000834) Human Tagged ORF Clone Lentiviral Particle
Symbol:	GRIN2B
Synonyms:	DEE27; EIEE27; GluN2B; hNR3; MRD6; NMDAR2B; NR2B; NR3
Mammalian Cell Selection:	None
Vector:	pLenti-C-mGFP (PS100071)
Tag:	mGFP
ACCN:	NM_000834
ORF Size:	4452 bp
ORF Nucleotide Sequence:	The ORF insert of this clone is exactly the same as(RC223623).
OTI Disclaimer:	The molecular sequence of this clone aligns with the gene accession number as a point of reference only. However, individual transcript sequences of the same gene can differ through naturally occurring variations (e.g. polymorphisms), each with its own valid existence. This clone is substantially in agreement with the reference, but a complete review of all prevailing variants is recommended prior to use. More info
OTI Annotation:	This clone was engineered to express the complete ORF with an expression tag. Expression varies depending on the nature of the gene.
RefSeq:	NM_000834.2
RefSeq Size:	6240 bp
RefSeq ORF:	4455 bp
Locus ID:	2904
UniProt ID:	Q13224
Cytogenetics:	12p13.1
Domains:	lig_chan
Protein Families:	Druggable Genome, Ion Channels: Glutamate Receptors, Transmembrane



[View online »](#)

Protein Pathways:	Alzheimer's disease, Amyotrophic lateral sclerosis (ALS), Huntington's disease, Long-term potentiation, Neuroactive ligand-receptor interaction, Systemic lupus erythematosus
MW:	166.37 kDa
Gene Summary:	This gene encodes a member of the N-methyl-D-aspartate (NMDA) receptor family within the ionotropic glutamate receptor superfamily. The encoded protein is a subunit of the NMDA receptor ion channel which acts as an agonist binding site for glutamate. The NMDA receptors mediate a slow calcium-permeable component of excitatory synaptic transmission in the central nervous system. The NMDA receptors are heterotetramers of seven genetically encoded, differentially expressed subunits including NR1 (GRIN1), NR2 (GRIN2A, GRIN2B, GRIN2C, or GRIN2D) and NR3 (GRIN3A or GRIN3B). The early expression of this gene in development suggests a role in brain development, circuit formation, synaptic plasticity, and cellular migration and differentiation. Naturally occurring mutations within this gene are associated with neurodevelopmental disorders including autism spectrum disorder, attention deficit hyperactivity disorder, epilepsy, and schizophrenia. [provided by RefSeq, Aug 2017]

Product images:

[RC223623L2] was used to prepare Lentiviral particles using [TR30037] packaging kit. HEK293T cells were transduced with RC223623L2V particle to overexpress human GRIN2B-mGFP fusion protein.