

Product datasheet for **RC223617**

GPR123 (ADGRA1) (NM_001083909) Human Tagged ORF Clone

Product data:

Product Type:	Expression Plasmids
Product Name:	GPR123 (ADGRA1) (NM_001083909) Human Tagged ORF Clone
Tag:	Myc-DDK
Symbol:	GPR123
Synonyms:	GPR123
Mammalian Cell Selection:	Neomycin
Vector:	pCMV6-Entry (PS100001)
E. coli Selection:	Kanamycin (25 ug/mL)



[View online »](#)

ORF Nucleotide Sequence:

>RC223617 representing NM_001083909
 Red=Cloning site Blue=ORF Green=Tags(s)

TTTTGTAATACGACTCACTATAGGGCGGCCGGGAATTCGTCGACTGGATCCGGTACCGAGGAGATCTGCC
 GCC**CGGATCGCC**

ATGGATCTGAAGACAGTGTCTCCCTGCCCGCTACCCAGGGAGTTCCTGCACCCCGTGGTGTACGCGT
 GCACGGCCGTCATGCTGCTCTGCCTCCTGGCCTCCTTCGTCACCTACATCGTGCACCAGAGCGCCATCCG
 CATCAGCCGCAAGGGCCGGCACACGCTCCTGAATTTCTGCTTCCACGCGGCCCTGACCTTACTGTGTTT
 GCCGGCGGCATCAATCGACCAAGTACCCATCCTGTGCCAGGCGGTGGGCATCGTGTGACTATTCTA
 CACTGTCCACCATGCTGTGGATAGGAGTGACCGCCAGGAACATCTACAAGCAGGTGACCAAGAAGGCCCC
 TCTGTGCCTGGACACAGACCAGCCACCGTACCCAGGCAGCCCTGCTCAGGTTTTACCTCGTCAGCGGA
 GGGGTCCCCTTTATCATCTGTGGGTACGGCTGCCACGAACATCAGGAATTACGGGACAGAGGACGAGG
 ACACGGCGTACTGCTGGATGGCCTGGGAGCCAGCCTGGGCGCCTTCTACGGCCAGCCGCATCATCAC
 CCTGGTCACTGTGTACTTCTGGGCACCTACGTGCAGCTGCGGCGCCACCCAGGGCGCAGGTACGAG
 CTGCGCACACAGCCCAGGAGCAGCGGGCGCTGGCGACACCCAGGGCGGCCGTGGGATCCGGCCAGGCA
 CCCCACCCGCACACGATGCCCCCGGCGCCTCCGTGCTGCAGAACGAGCACTCATTCCAGGCACAGCTGCG
 CGCCGCGCCTTACGCTGTTCTGTTACGGCCACGTGGGCCTTCGGGGCGCTGGCGGTGTACAGGGC
 CACTTCTGGACATGGTCTTACGCTGCCTGTACGGCGCCTTCTGCGTGACCCTGGGACTTCTCGTCTCA
 TCCACCACTGCGCAAGCGTGAGGACGTGTGGCAGTGTGGTGGGCATGCTGCCCGCCCCGAAGGACGC
 CCACCCCGCACTTGACGCCAACGGGGCCGCGCTGGGCCGCGCCGCTGCCTGCACTCGCCGGGACTGGGC
 CAGCCACGGGGCTTCGCGCACCCACCGGGCCCCGCAAGATGACCAACCTGCAGGCCGCGCAGGGCCAGC
 CCAGTGCCTGTACCGGCCACCCGCTGCTGCGCCAAGATGCACTGCGAGCCACTGACGGCGGACGAGGC
 GCACGTGCACCTGCAGGAGGAGGGCGCCTTCGGGACGACCCCCACCTGCACGGGTGCCTTCAGGGCAGA
 ACTAAGCCGCCCTACTTTAGCCGACCCAGCAGAGGAGCCGAGTACGCCTACCACATCCCATCCAGCC
 TGGATGGCAGCCCCGACGCTCGCGCACAGACAGCCCCCAGCTCTCTGGATGGCCCGGCGGGACACA
 CACGCTGGCCTGCTGCACCCAGGGCGACCCCTTCCCCATGGTACCCAGCCCGAGGGCAGTGATGGGAGC
 CCTGCCCTTACAGCTGCCCCACGACGGCGGAGGGAGGAGCAGCCTCGGGCCCGGCCACTTGGAGATGC
 TGCGGAGGACACAGTCCCTGCCCTTGGTGGCCCCAGCCAGAACGGGCTGCCAAGGGTAAATTGCTAGA
 AGGCCTGCCGTTTGGCACCGGACGGGACCGCAACATCCGAACGGGACCCTGGAAAAACGAACTACTGTG

ACGCGTACGCGGCGGCTCGAGCAGAAACTCATCTCAGAAGAGGATCTGGCAGCAAATGATATCCTGGATT
 ACAAGGATGACGACGATAAGGTTTAA

Protein Sequence:

>RC223617 representing NM_001083909
 Red=Cloning site Green=Tags(s)

MDLKTVLSLPRYPGEFLHPVYACTAVMLLCLLASFVTVYIVHQSARISRKGRHTLLNFCFHAALTFTVF
 AGGINRKYPILCQAVGIVLHYSTLSTMLWIGVTARNIYKQVTKKAPLCLDTPPYPRQPLLRFYLVSG
 GVPFIICGVTAATNIRNYGTEDEDAYCWMWEPVSLGAFYGPAAIITLVTCVYFLGTYVQLRRHPGRRYE
 LRTQPEEQRRLATPEGGGIRPGTPPAHADPAGASVLQNEHSFQAQLRAAFTLFLFTATWAFGALAVSQG
 HFLDMVFSCLYGAFVTLGLFVL IHHCAKREDVWQCWWACPPRKAHPALDANGAALGRAACLHSPGLG
 QPRGF AHPGPKMTNLQAAQGHASCLSPATPCCAKMHCEPLT ADEAHVHLQEEGAFGHDPHLHGCLQGR
 TKPPYFSRHPAEEPEYAYHIPSSLDGSPRSSRTDSSPSSLDGPAGTHTLACCTQGDPFPMVTQPEGSDGS
 PALYSCPTQPGREAALGPGHLEMLRRTQSLPFGGPSQNGLPKGKLLLEGLPFGTDGTGNIRTPWKNETTV

TRTRPLEQKLI SEEDLAANDILDYKDDDDKV

Chromatograms:

https://cdn.origene.com/chromatograms/mk8005_f06.zip

Restriction Sites:

Sgfl-Mlul

Cloning Scheme:


ACCN: NM_001083909

ORF Size: 1680 bp

OTI Disclaimer: The molecular sequence of this clone aligns with the gene accession number as a point of reference only. However, individual transcript sequences of the same gene can differ through naturally occurring variations (e.g. polymorphisms), each with its own valid existence. This clone is substantially in agreement with the reference, but a complete review of all prevailing variants is recommended prior to use. [More info](#)

OTI Annotation: This clone was engineered to express the complete ORF with an expression tag. Expression varies depending on the nature of the gene.

Components: The ORF clone is ion-exchange column purified and shipped in a 2D barcoded Matrix tube containing 10ug of transfection-ready, dried plasmid DNA (reconstitute with 100 ul of water).

Reconstitution Method:

1. Centrifuge at 5,000xg for 5min.
2. Carefully open the tube and add 100ul of sterile water to dissolve the DNA.
3. Close the tube and incubate for 10 minutes at room temperature.
4. Briefly vortex the tube and then do a quick spin (less than 5000xg) to concentrate the liquid at the bottom.
5. Store the suspended plasmid at -20°C. The DNA is stable for at least one year from date of shipping when stored at -20°C.

RefSeq: [NM_001083909.3](#)

RefSeq Size: 4298 bp

RefSeq ORF: 1683 bp

Locus ID: 84435

UniProt ID: [Q86SQ6](#)

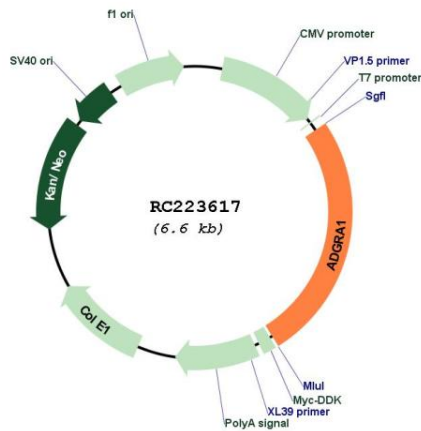
Cytogenetics: 10q26.3

Protein Families: Transmembrane

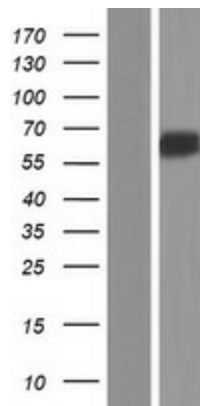
MW: 60.7 kDa

Gene Summary: This gene encodes a protein that belongs to the adhesion family of G-protein-coupled receptors. Members of this family function in several sensory systems and regulate blood pressure, immune responses, food intake and development. A similar protein in rodents is thought to play a role in in the regulation of neuronal signaling pathways. Several alternatively spliced transcript variants of this gene have been described, but the full-length nature of some of these variants has not been determined. [provided by RefSeq, Mar 2014]

Product images:



Circular map for RC223617



Western blot validation of overexpression lysate (Cat# [LY421250]) using anti-DDK antibody (Cat# [TA50011-100]). Left: Cell lysates from untransfected HEK293T cells; Right: Cell lysates from HEK293T cells transfected with RC223617 using transfection reagent MegaTran 2.0 (Cat# [TT210002]).