

## Product datasheet for **RC223616**

### GLIS2 (NM\_032575) Human Tagged ORF Clone

#### Product data:

Product Type:	Expression Plasmids
Product Name:	GLIS2 (NM_032575) Human Tagged ORF Clone
Tag:	Myc-DDK
Symbol:	GLIS2
Synonyms:	NKL; NPHP7
Mammalian Cell Selection:	Neomycin
Vector:	pCMV6-Entry (PS100001)
E. coli Selection:	Kanamycin (25 ug/mL)



[View online »](#)

**ORF Nucleotide Sequence:**

>RC223616 representing NM\_032575  
 Red=Cloning site Blue=ORF Green=Tags(s)

TTTTGTAATACGACTCACTATAGGGCGGCCGGAATTCGTCGACTGGATCCGGTACCGAGGAGATCTGCC  
 GCC**CGGATCGCC**

ATGCACTCCCTGGACGAGCCGCTCGACCTGAAGCTGAGTATCACCAAGCTCCGGGCGCAAGAGAGAAGC  
 GGGAGAGGACGCTGGGTGTGGTCCGGCCCCGTGCTCTGCACAGGAGCTGGGCCTGGTGGATGACAGCCC  
 CACACCTGGCTCTCCAGGCTCCCGCCCTCAGGCTTCTGCTGAACTCCAAGTCCCGAGAAGGTGGAG  
 GGACGCTTTTTCAGCAGCCCTCTCGTGGACCTCAGCCTGTACCACCATCTGGGCTGGACTCCCCAATG  
 GCAGCAGCTCGTGTCCCCGAGCGCCAGGGCAACGGGGACCTGCCTCCAGTGCCAGTGCCTCGGACTT  
 CCAGCCACTGCGCTATTTGGATGGTGTCCCGAGCTCCTCCAGTCTTCTCGCCCTCGGCTCCGGGGG  
 GCCCTGCACCTGCCTGCCTCCTCCTTACCCTCCCAAGGACAAGTGCCTCTCGCCAGACCTGCCCC  
 TGCCCAAGCAGCTGGTGTGTGCTGGGCCAAGTGAACCAAGCTCTTTGAGCTCCTGCAAGACCTGGTGA  
 CCATGTCAACGATTACCATGTCAAGCCGAGAAGGATGCGGGGACTGCTGCCACTGGGAGGGCTCGGCC  
 CGCCATGGCCGAGTTTCAACGCCAGGTACAAGATGCTCATCCACATCCGCACACACACCAACGAGAAGC  
 CACACCGTGTCCGACCTGCAGCAAGAGCTTCTCCCGCCTGGAGAACCTGAAGATCCACAACCGGTGCA  
 CACAGGTGAGAAGCCCTACGTCTGCCCTACGAGGGCTGCAACAAGCGCTATTCCAACCTCAGTGACCGC  
 TTTAAGCACACGCGCACCCACTATGTGGACAAGCCCTACTACTGCAAGATGCCCGGCTGCCACAAGCGCT  
 ACACGGACCCAGCTCACTGCGCAAGCACATCAAGGCCCATGGCCACTTTGTGTCCCACGAGCAGCAAGA  
 GCTCCTGCAGCTGCGCCACCCCAAGCCGCACTGCCCGCCCCGACGGCGGCCCTATGTCAAGTGGG  
 GCCAGATCATCATCCCAACCCAGTGCCTCTTTGGAGGCCCTGGCCTGCCCGGCTTACCCTACCC  
 TGGCCCCCGCCCTTGACCTCAGTGCCTGGCCTGTGGCAACGGTGGGGCAGTGGGGTGGGGGGG  
 CATGGGCCCTGGGCTGCCAGGCCCGTCCCTCAATCTGGCCAAGAACCCTGCTGCCCTCGCCC  
 TTTGGGGCTGGCGGACTGGGCTTGCCTGTGGTCTCCCTCCTTGTGGCGAGCTGGTGGCAAGGCCGAGG  
 GGGAGAAGGGGCGTGGTGGTGGCCACCAGGGCCCTGGGCATGGAGGGCCACAAGACGCCCTTAAAG  
 GACGGAGAGCAGCTGCTCCCGCCAAGCCCGATGGACTCCCCTGCTGCCAGGCACCGTGTGGACCTG  
 TCCACGGGCGTCAACTCAGTGCAGCAGCCAGAGGCGTTGGCCCTGGCTGGTGGTCACTCCCGCCG  
 GCTCGGTGCTGCTCAAACCGCTGTGGTGAAC

**ACGCGT**ACGCGGCCGCTCGAGCAGAACTCATCTCAGAAGAGGATCTGGCAGCAAATGATATCCTGGATT  
 ACAAGGATGACGACGATAAGGTTTAA

**Protein Sequence:**

>RC223616 representing NM\_032575  
 Red=Cloning site Green=Tags(s)

MHSLDEPLDLKLSITKLRAAREKRERTLGVVRPRALHRELGLVDDSPTPGSPGPPSGFLLNSKFPEKVE  
 GRFSAAPLVDLSLSPPSGLDSPNGSSLSPERQNGDLPPVPSASDFQPLRYLDGVPSSFQFFLPLGSGG  
 ALHLPASSFLTPPKDKCLSPDLPLPKQLVCRWAKCNQLFELLQDLVDHVNDYHVKPEKDAGYCCHWEGCA  
 RHGRGFNARYKMLIHIRTHTNEKPHRCPTCSKSFRLNENLKIHNRSHTGEKPYVCPYEGCNKRYNSSSDR  
 FKHTRTHYVDKPYCKMPGCHKRYTDPSSLRKHKAHGHFVSHEQQELLQLRPPPKPPLPAPDGGPYVSG  
 AQIIIPNPAALFGGPGPLPGLPLAPGPLDL SALACGNGGGSGGGMGPGPLPGPVLPLNLAKNPLLPSP  
 FGAGGLGLPVVSLLAGAAGGKAEGEKGRGSVPTRALGMEGHKTPLETTSSCSRSPDGLPLLPGTVLTL  
 STGVNSAASSPEALAPGWVVIIPGVSLLKPAVVN

**TRTRPLEQKLI**SEEDLAANDILDYKDDDDKV

**Chromatograms:**

[https://cdn.origene.com/chromatograms/mk8011\\_d07.zip](https://cdn.origene.com/chromatograms/mk8011_d07.zip)

**Restriction Sites:**

Sgfl-MluI

**Cloning Scheme:**


**ACCN:** NM\_032575

**ORF Size:** 1572 bp

**OTI Disclaimer:** The molecular sequence of this clone aligns with the gene accession number as a point of reference only. However, individual transcript sequences of the same gene can differ through naturally occurring variations (e.g. polymorphisms), each with its own valid existence. This clone is substantially in agreement with the reference, but a complete review of all prevailing variants is recommended prior to use. [More info](#)

**OTI Annotation:** This clone was engineered to express the complete ORF with an expression tag. Expression varies depending on the nature of the gene.

**Components:** The ORF clone is ion-exchange column purified and shipped in a 2D barcoded Matrix tube containing 10ug of transfection-ready, dried plasmid DNA (reconstitute with 100 ul of water).

- Reconstitution Method:**
1. Centrifuge at 5,000xg for 5min.
  2. Carefully open the tube and add 100ul of sterile water to dissolve the DNA.
  3. Close the tube and incubate for 10 minutes at room temperature.
  4. Briefly vortex the tube and then do a quick spin (less than 5000xg) to concentrate the liquid at the bottom.
  5. Store the suspended plasmid at -20°C. The DNA is stable for at least one year from date of shipping when stored at -20°C.

**RefSeq:** [NM\\_032575.3](#)

**RefSeq Size:** 3705 bp

**RefSeq ORF:** 1575 bp

**Locus ID:** 84662

**UniProt ID:** [Q9BZE0](#)

**Cytogenetics:** 16p13.3

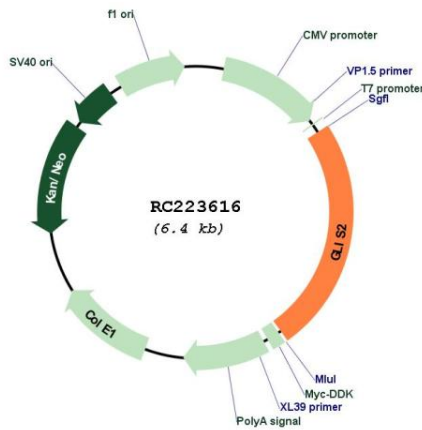
**Domains:** zf-C2H2

**Protein Families:** ES Cell Differentiation/IPS

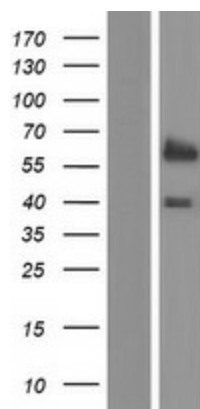
**MW:** 55.5 kDa

**Gene Summary:** This gene is a member of the GLI-similar zinc finger protein family and encodes a nuclear transcription factor with five C2H2-type zinc finger domains. The protein encoded by this gene is widely expressed at low levels in the neural tube and peripheral nervous system and likely promotes neuronal differentiation. It is abundantly expressed in the kidney and may have a role in the regulation of kidney morphogenesis. p120 regulates the expression level of this protein and induces the cleavage of this protein's C-terminal zinc finger domain. This protein also promotes the nuclear translocation of p120. Mutations in this gene cause nephronophthisis (NPHP), an autosomal recessive kidney disease characterized by tubular basement membrane disruption, interstitial lymphohistiocytic cell infiltration, and development of cysts at the corticomedullary border of the kidneys.[provided by RefSeq, Jan 2010]

**Product images:**



Circular map for RC223616



Western blot validation of overexpression lysate (Cat# [LY410031]) using anti-DDK antibody (Cat# [TA50011-100]). Left: Cell lysates from untransfected HEK293T cells; Right: Cell lysates from HEK293T cells transfected with RC223616 using transfection reagent MegaTran 2.0 (Cat# [TT210002]).