

Product datasheet for **RC223602**

CTNND1 (NM_001085467) Human Tagged ORF Clone

Product data:

Product Type:	Expression Plasmids
Product Name:	CTNND1 (NM_001085467) Human Tagged ORF Clone
Tag:	Myc-DDK
Symbol:	CTNND1
Synonyms:	BCDS2; CAS; CTNND; p120; p120(CAS); p120(CTN); P120CAS; P120CTN
Mammalian Cell Selection:	Neomycin
Vector:	pCMV6-Entry (PS100001)
E. coli Selection:	Kanamycin (25 ug/mL)



[View online »](#)

ORF Nucleotide Sequence:

>RC223602 representing NM_001085467
 Red=Cloning site Blue=ORF Green=Tags(s)

TTTTGTAATACGACTCACTATAGGGCGGCCGGGAATTCGTGACTGGATCCGGTACCGAGGAGATCTGCC
 GCC**CGGATCGCC**

ATGCAGGAGCCGGGCGAGATTGTGGAGACCTACACGGAGGAGGATCCTGAGGGAGCCATGTCTGTAGTCT
 CTGTGGAGACCTCAGATGATGGGACCACTCGGGCCACAGAGACCACGGTCAAGAAAGTAGTGAAGACTGT
 GACAACACGGACAGTACAGCCAGTCGCTATGGGACCAGACGGGTTGCCTGTGGATGCTTCATCAGTTTCT
 AACAACTATATCCAGACTTTGGGTCTGATTTCCGCAAGAATGGCAATGGGGGACCTGGTCCCTATGTGG
 GGCAAGCTGGCACTGCTACCTTCTTAGGAACTCCACTACCTCCTGATGGTTATAGTCGCCACTATGA
 AGATGGTTATCCAGGTGGCAGTGATAACTATGGCAGTCTGTCCCAGGATGACCCGATTGAGGAGCGGTAT
 AGGCCAGCATGGAAGGCTACCGGGCACCTAGTAGACAGGATGTGTATGGGCCCCAACCCAGGTTCCGG
 TAGGTGGGAGCAGCGTGGATCTGCATCGCTTTCATCCAGAGCCTTATGGGCTAGAGGATGACCAGCGTAG
 TATGGGCTATGATGACCTGGATTATGGTATGATGTCTGATTATGGCACTGCCCGTCCGACTGGGACACCC
 TCTGACCCTCGTCGGCGCCTCAGGAGCTATGAAGACATGATTGGTGAGGAGGTGCCATCGGATCAATACT
 ACTGGGCTCCTTTGGCCAGCATGAGCGAGGAAGTTTAGCAAGCTTGGATAGCCTGCGCAAGGAGGGCC
 TCCACCTCCTAATTGGAGACAGCCAGAGCTGCCAGAGGTGATCGCCATGCTTGGATTCCGCTTGGGTGCT
 GTCAAGTCCAATGCAGCTGCATACCTGCAACACTTATGCTACCGCAATGACAAGGTGAAGACTGACGTGC
 GGAAGCTCAAGGGCATCCAGTACTGGTGGGATTGTTAGACCATCCAAAAAGGAAGTGCACCTTGGAGC
 CTGTGGAGCTCTCAAGAATATCTCTTTGGACGTGACCAGGATAACAAGATTGCCATAAAAACTGTGAT
 GGTGTGCCTGCCCTTGTGCGATTGCTTCGAAAGGCTCGTGATATGGACCTTACTGAAGTTATTACCGGAA
 CCCTGTGGAATCTTTCATCCCATGACTCAATCAAAATGGAGATTGTGGACCATGCATGCCATGCCATGCCAT
 AGATGAAGTGATCATTCTCATTCTGGTTGGGAGCGGGAACCTAATGAAGACTGTAAAGCCACGCCATATT
 GAGTGGGAATCGGTGCTACCAACACAGCTGGCTGCCTTAGGAATGTAAGCTCAGAGAGGAGTGAAGCTC
 GCCGAAACTTCGGGAATGTGATGGTTTAGTTGATGCCCTCATTTCATTGTTTCAGGCTGAGATTGGGCA
 GAAGGATTCAGACAGCAAGCTTGTAGAGAACTGTGTTGCCTTCTCGGAACTTATCATATCAAGTTCAC
 CGGGAGATCCACAGGCAGAGCGTTACCAAGAGGCAGCTCCCAATGTTGCCAACAACTACTGGCCACATG
 CTGCCAGTTGCTTTGGGGCAAGAAGGGCAAAGGGAAAAAACCTATAGAGGATCCAGCAAACGATACAGT
 GGATTTCCCTAAAAGAACGAGTCCAGCTCGAGGCTATGAGCTCTATTTCAGCCAGAGGTGGTTCGGATA
 TACATCTCACTTCTTAAGGAGAGCAAGACTCCTGCCATCTAGAAGCCTCAGCTGGAGCTATCCAGAACT
 TGTGTGCTGGGCCTGGACGTATGGTCGATACATCCGCTCTGCTCTGCGTCAAGAGAAGGCTCTTCTGCT
 CATAGCTGACCTCCTGACTAATGAACATGAACGGTGGTAAAAGCTGCATCTGGAGCACTGAGAAACCTG
 GCTGTGGATGCTCGAACAAAGAATTAATTGGTAAACATGCTATTCTAAGTGGTAAAGAACTGCCCAG
 GAGGACAGCAGAACTCCTCTTGGAAATTTCTCTGAGGACACTGTCATCTCTATTTTGAACACTATCAACGA
 GGTTATCGCTGAGAACTTGGAGGCTGCCAAAAAGCTTCGAGAGACACAGGGTATTGAGAAGCTGGTGTG
 ATCAACAAATCAGGGAACCGCTCAGAAAAAGAAGTTCGAGCAGCAGCACTTGATTACAGACAATCTGGG
 GATATAAGGAACTGCGGAAGCCACTGGAAAAAGAAGGATGGAAGAAATCAGACTTTCAGGTGAATCTAAA
 CAATGCTTCCCGAAGCCAGAGCAGTCAATCATATGATGATAGTACTCTCCCTCTCATTGACCGGAACCAA
 AAATCAGATAAGAAACCTGATCGGGAAGAAATTCAGATGAGCAATATGGGATCAAACACAAAATCACTAG
 ATAACAACTATTCACACCAAATGAGAGAGGAGACCACAATAGAACACTGGATCGATCGGGGGATCTAGG
 CGACATGGAGCCATTGAAGGGAACAACCCCTTGATGCAGAAGATT

ACGCGTACGCGGCCGCTCGAGCAGAACTCATCTCAGAAGAGGATCTGGCAGCAATGATATCCTGGATT
 ACAAGGATGACGACGATAAGGTTTAA

Protein Sequence: >RC223602 representing NM_001085467
Red=Cloning site Green=Tags(s)

MQEPGQIVETYTEEDPEGAMSVSVETSDDGTTTRRTETT VKKVVKTVTTRTVQPVAMGPDGLPVDASSVS
NNYIQT LGRDFRKNNGGPGPYVGQAGTATLPRNFHYPPDGYSRHYEDGYPGGSDNYGSLSRVTRIEERY
RPSMEGYRAPS RQDVYGPQPQVRVGGSSVDLHRFHPEPYGLEDDQRSMGYDDL DYGMMSDYGTARRTGTP
SDPRRRLRSYEDMIGEEVPSDQYYWAPLAQHERGSLASLDSL RKGPPPPNWRQPELPEVIAMLGFRLGA
VKSNAAYLQHL CYRNDKVKTDVRKLGIPVLVGLLDHPKKEVHLGACGALKNISFGRDQDNKIAIKNCD
GVPALVRLLRKARDMDL TEVITGTLWNLSSHDSIKMEIVDHALHALTDEVIIPHSGWEREPNEDCKPRHI
EWESVLTNTAGCLRNVSSEARRKLRECDGLVDALIFIVQAEIGQKSDSKLVENCVCLLRNLSYQVH
REIPQAERYQE AAPNVANNTGPHAASCFGAKKGGKPKIEDPANDTVDFPKRTSPARGYELLFQPEVVRI
YISLLKESKTPAILEASAGAIQNL CAGRWTYGRYIRSALRQEKALSAIADLLTNEHERVVKAASGALRNL
AVDARNKELIGKHAIPNLVKNLPGGQQNSSWNFSEDTVISILNTINEVIAENLEAAKKLRETQIEKLV
INKSGNRSEKEVRAAALVLQTIWGYKELRKPLEKEGWKKSDFQVNLNNASRSQSSHSYDDSTLPLIDRNQ
KSDKKPDREEIQMSNMGSNKSLDNNYSTPNERGDHNRTLDRSGDLGDMEPLKGTTPLMQKI

TRTRPLEQKLISEEDLAANDILDYKDDDDKV

Chromatograms: https://cdn.origene.com/chromatograms/mg4504_g11.zip

Restriction Sites: SgfI-MluI

Cloning Scheme:


ACCN: NM_001085467

ORF Size: 2496 bp

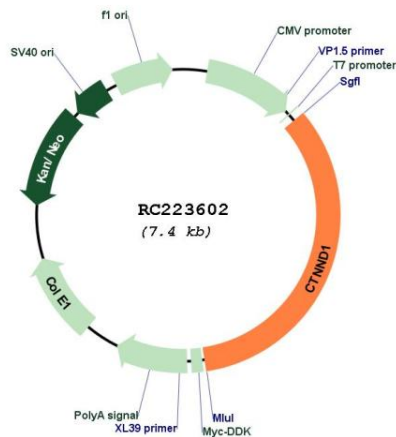
OTI Disclaimer: The molecular sequence of this clone aligns with the gene accession number as a point of reference only. However, individual transcript sequences of the same gene can differ through naturally occurring variations (e.g. polymorphisms), each with its own valid existence. This clone is substantially in agreement with the reference, but a complete review of all prevailing variants is recommended prior to use. [More info](#)

OTI Annotation: This clone was engineered to express the complete ORF with an expression tag. Expression varies depending on the nature of the gene.

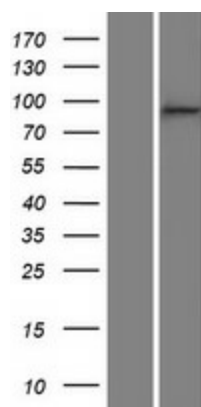
Components: The ORF clone is ion-exchange column purified and shipped in a 2D barcoded Matrix tube containing 10ug of transfection-ready, dried plasmid DNA (reconstitute with 100 ul of water).

Reconstitution Method:	<ol style="list-style-type: none">1. Centrifuge at 5,000xg for 5min.2. Carefully open the tube and add 100ul of sterile water to dissolve the DNA.3. Close the tube and incubate for 10 minutes at room temperature.4. Briefly vortex the tube and then do a quick spin (less than 5000xg) to concentrate the liquid at the bottom.5. Store the suspended plasmid at -20°C. The DNA is stable for at least one year from date of shipping when stored at -20°C.
RefSeq:	NM_001085467.1 , NP_001078936.1
RefSeq Size:	5850 bp
RefSeq ORF:	2499 bp
Locus ID:	1500
UniProt ID:	O60716
Cytogenetics:	11q12.1
Protein Families:	Druggable Genome
Protein Pathways:	Adherens junction, Leukocyte transendothelial migration
MW:	92.5 kDa
Gene Summary:	This gene encodes a member of the Armadillo protein family, which function in adhesion between cells and signal transduction. Multiple translation initiation codons and alternative splicing result in many different isoforms being translated. Not all of the full-length natures of the described transcript variants have been determined. Read-through transcription also exists between this gene and the neighboring upstream thioredoxin-related transmembrane protein 2 (TMX2) gene. [provided by RefSeq, Dec 2010]

Product images:



Circular map for RC223602



Western blot validation of overexpression lysate (Cat# [LY421316]) using anti-DDK antibody (Cat# [TA50011-100]). Left: Cell lysates from untransfected HEK293T cells; Right: Cell lysates from HEK293T cells transfected with RC223602 using transfection reagent MegaTran 2.0 (Cat# [TT210002]).