

Product datasheet for **RC223599**

LRTM2 (NM_001039029) Human Tagged ORF Clone

Product data:

Product Type:	Expression Plasmids
Product Name:	LRTM2 (NM_001039029) Human Tagged ORF Clone
Tag:	Myc-DDK
Symbol:	LRTM2
Mammalian Cell Selection:	Neomycin
Vector:	pCMV6-Entry (PS100001)
E. coli Selection:	Kanamycin (25 ug/mL)
ORF Nucleotide Sequence:	>RC223599 representing NM_001039029 Red=Cloning site Blue=ORF Green=Tags(s)

TTTTGTAATACGACTCACTATAGGGCGGCCGGAATTCGTCGACTGGATCCGGTACCGAGGAGATCTGCC
GCC**CGATCGCC**

ATGCTGGCGCCGGGCAGCAGCCCTGGGCAGAGGGGCAGGCTCGCCCTGCAGTGGAGGCAAGTCTCCTGGA
TCACCTGCTGGATCGCCCTGTATGCTGTGGAGGCCCTCCCCACCTGCCCTTCTCCTGCAAGTGTGACAG
CCGCAGCCTGGAGGTGGACTGCAGTGGCCTTGGCCTACCACGGTGCCCCAGACGTGCCCGCAGCCACC
CGAACCTCTTGCTCTTGAACAATAAGCTGAGTGCCCTGCCAAGCTGGGCTTTCGCCAACCTCTCCAGCC
TGCAGCGTTGGACCTGTCCAACAACCTTCTGGACCGGCTGCCCGCTCCATTTTCGGGGACCTGACGAA
TCTGACTGAGCTTCAGCTGCGCAATAACAGCATCAGGACCTGGACAGGGACCTGCTGCGGCACTCGCCG
CTGCTCCGCCACCTGGACCTGTCCATCAACGGCCTGGCCAGTTGCCCCCTGGTCTTTTCGACGGGCTCC
TGGCTCTGCGCTCCCTCTCGCTTCCGCTCCAACCGTCTGCAGAATCTGGACCGGCTGACATTTGAACCCCT
AGCAAACCTGCAGCTGCTGCAGTCCGGGATAAACCCTGGGAGTGTGACTGTAACCTGCGTGAGTTCAA
CACTGGATGGAGTGGTTCTCTACCGAGGGGGACGCTTGGACCAGCTGCCTGCACCCTGCCAAGGAGC
TGAGGGGAAGGACATGCGGATGGTCCCATGGAGATGTTCAACTACTGCTCCAGCTGGAGGACGAGAA
TAGCTCAGCTGGGCTGGATATTCCTGGCCACCCTGCACCAAGGCCAGTCCAGAGCCTGCTAAGCCCAAG
CCCGGGCTGAGCCGGAGCCGGAGCCAGCACAGCCTGCCACAGAAGCAGAGGACCGGCCGGCGAGCG
TGAGGCGAGCCATGGGCACGGTGATCATTGCAGGGGTCGTGTGCGGCGTCTGTCATCATGATGGTGGT
GGCCGCTGCCTATGGCTGCATCTACGCCTCCCTCATGGCCAAGTACCACCGGGAGCTCAAAAAGCCAG
CCCTGATGGGGACCCGAGGGCGAGCAGGACCAGAAGCAGATCTCTTCTGTGGCC

ACGCGTACGCGGCCGCTCGAGCAGAACTCATCTCAGAAGAGGATCTGGCAGCAATGATATCCTGGATT
ACAAGGATGACGACGATAAGGTTTAA



View online »

Protein Sequence: >RC223599 representing NM_001039029
Red=Cloning site Green=Tags(s)

MLAPGSSSPGQRRLALQWRQVSWITCWIALYAVEALPTCPFSCCKDSRSLEVDSCGLGLTTVPPDVAAT
 RTLLLLNNKLSALPSWAFANLSSLQRLDLNNFLDRLPRSI FGDLTNL TELQLRNNSIRTLDRDLLRHSP
 LLRHLDL SINGLAQLPPGLFDGLLALRSLSLRSNRLQNLDRLTFEPLANLQLLQVGDNPWECDCNLRFK
 HWMWF SYRGGRLDQLACTLPKELRGKDMRMPMEMFNYSQLEDESSAGLDIPGPPCTKASPEPAKPK
 PGAEPEPEPSTACPQKQRHPASVRRAMGTVIIAGVVCVVVICIMMVAAAAYGCIYASLMAKYHRELKRRQ
 PLMGDPEGEHEDQKQISSVA

TRTRPLEQKLISEEDLAANDILDYKDDDDKV

Chromatograms: https://cdn.origene.com/chromatograms/mk8004_h12.zip

Restriction Sites: SgfI-MluI

Cloning Scheme:

Cloning sites used for ORF Shuttling:



* The last codon before the Stop codon of the ORF

ACCN: NM_001039029

ORF Size: 1110 bp

OTI Disclaimer: The molecular sequence of this clone aligns with the gene accession number as a point of reference only. However, individual transcript sequences of the same gene can differ through naturally occurring variations (e.g. polymorphisms), each with its own valid existence. This clone is substantially in agreement with the reference, but a complete review of all prevailing variants is recommended prior to use. [More info](#)

OTI Annotation: This clone was engineered to express the complete ORF with an expression tag. Expression varies depending on the nature of the gene.

Components: The ORF clone is ion-exchange column purified and shipped in a 2D barcoded Matrix tube containing 10ug of transfection-ready, dried plasmid DNA (reconstitute with 100 ul of water).

- Reconstitution Method:**
1. Centrifuge at 5,000xg for 5min.
 2. Carefully open the tube and add 100ul of sterile water to dissolve the DNA.
 3. Close the tube and incubate for 10 minutes at room temperature.
 4. Briefly vortex the tube and then do a quick spin (less than 5000xg) to concentrate the liquid at the bottom.
 5. Store the suspended plasmid at -20°C. The DNA is stable for at least one year from date of shipping when stored at -20°C.

RefSeq: [NM_001039029.3](#)

RefSeq Size: 3688 bp

RefSeq ORF: 1113 bp

Locus ID: 654429

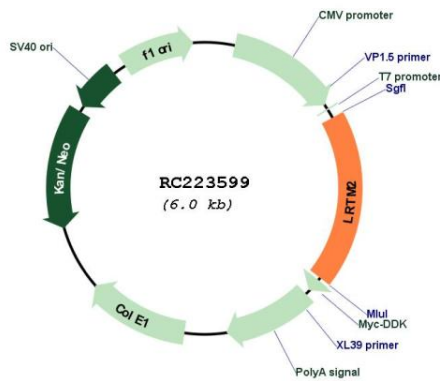
UniProt ID: [Q8N967](#)

Cytogenetics: 12p13.33

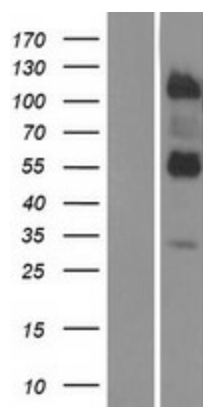
Protein Families: Transmembrane

MW: 41 kDa

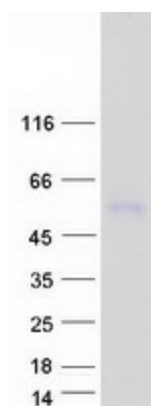
Product images:



Circular map for RC223599



Western blot validation of overexpression lysate (Cat# [LY431882]) using anti-DDK antibody (Cat# [TA50011-100]). Left: Cell lysates from untransfected HEK293T cells; Right: Cell lysates from HEK293T cells transfected with [RC228854] using transfection reagent MegaTran 2.0 (Cat# [TT210002]).



Coomassie blue staining of purified LRTM2 protein (Cat# [TP323599]). The protein was produced from HEK293T cells transfected with LRTM2 cDNA clone (Cat# RC223599) using MegaTran 2.0 (Cat# [TT210002]).