

Product datasheet for RC223584

LRIG1 (NM_015541) Human Tagged ORF Clone

Product data:

Product Type:	Expression Plasmids
Product Name:	LRIG1 (NM_015541) Human Tagged ORF Clone
Tag:	Myc-DDK
Symbol:	LRIG1
Synonyms:	LIG-1; LIG1
Mammalian Cell Selection:	Neomycin
Vector:	pCMV6-Entry (PS100001)
E. coli Selection:	Kanamycin (25 ug/mL)
ORF Nucleotide Sequence:	>RC223584 representing NM_015541 Red=Cloning site Blue=ORF Green=Tags(s)

TTTTGTAATACGACTCACTATAGGGCGGCCGGGAATTCGTCGACTGGATCCGGTACCGAGGAGATCTGCC
GCC**CGATCGCC**

ATGGCGCGCCGGTCCGGGGAGGGCTCGGGGCCCGCGCCGCTCGCCTTGCCTTCTCCTTCTCTGGCTGC
TTTTGCTTCGGCTGGAGCCGGTGACCGCCGCGGCCCGCCCGGGCGCCCTGCGCGGCCGCTGCACTTG
CGCTGGGACTCGCTGGACTGCGGTGGCGCGGGCTGGCTGCGTTGCCCGGGACCTGCCCTCCTGGACG
CGGAGCCTAACCTGAGTTACAACAACTCTCTGAGATTGACCGTGTGTTTGGAGACTTGCCGAACC
TACAGGAAGTGTACCTCAATAAATGAGTTGACAGCGGTACCATCCCTGGCGCTGCTTCATCACATGT
CGTCTCTCTTTCTGCAGCACAACAAGATTTCGACAGCGTGGAGGGGAGCCAGCTGAAGGCCTACCTTTCC
TTAGAAGTGTAGATCTGAGTTTGAACAACATCACGGAAGTGCAGAACACCTGCTTTCCACACGGACCGC
CTATAAAGGAGCTCAACCTGGCAGGCAATCGGATTGGCACCTGGAGTTGGGAGCATTGATGGTCTGTC
ACGGTCGCTGCTAACTCTTCGCTGAGCAAAAACAGGATCACCCAGCTTCTGTAAAGAGCATTCAAGCTA
CCCAGGCTGACACAACCTGGACCTCAATCGGAACAGGATTTCGGCTGATAGAGGGCTCACCTTCCAGGGGC
TCAACAGCTTGGAGGTGCTGAAGCTTTCAGCGAAACAACATCAGCAAACTGACAGATGGGGCCTTCTGGG
ACTGTCCAAGATGCATGTGCTGCACCTGGAGTACAACAGCCTGGTAGAAGTGAACAGCGGCTCGCTCTAC
GGCTCACGGCCCTGCATCAGCTCCACCTCAGCAACAATTCATCGCTCGCATTACCGCAAGGGCTGGA
GCTTCTGCCAGAAGCTGCATGAGTTGGTCTGCTTCAACAACCTGACACGGCTGGACGAGGAGAGCCT
GGCCGAGCTGAGCAGCCTGAGTGTCTGCTCAGCCACAATTCATCAGCCACATTGCGGAGGGTGCC
TTCAAGGGACTCAGGAGCCTGCGAGTCTTGGATCTGGACCATAACGAGATTTCCGGCACAATAGAGGACA
CGAGCGCGCCTTCTCAGGGCTCGACAGCCTCAGCAAGCTGACTCTGTTTGGAAACAAGATCAAGTCTGT
GGTAAGAGAGCATTCTCGGGCTGGAAGGCTGGAGCACCTGAACCTTGGAGGGAATGCGATCAGATCT
GTCCAGTTTGTGCTTTGTGAAGATGAAGAATCTTAAAGAGCTCCATATCAGCAGCGACAGCTTCTGT
GTGACTGCCAGCTGAAGTGGCTGCCCCGTGGCTAATTGGCAGGATGCTGCAGGCCTTTGTGACAGCCAC
CTGTGCCACCCAGAATCACTGAAGGTCAGAGCATTTTCTGTGCCACCAGAGAGTTTGTGTGCGAT



[View online >](#)

GACTTCCTGAAGCCACAGATCATCACCCAGCCAGAAACCACCATGGCTATGGTGGGCAAGGACATCCGGT
 TTACATGCTCAGCAGCCAGCAGCAGCAGCTCCCCATGACCTTTGCTGGAGAAAGACAATGAAGTCTT
 GACCAATGCAGACATGGAGAAGTTTGTCCACGTCCACGCGCAGGACGGGGAAGTATGGAGTACACCACC
 ATCCTGCACCTCCGTGAGTCACTTTCCGGGCAGAGGGCCGCTACCAATGTGTATCACCACCACCTTTG
 GCTCCACCTATTCACATAAGGCCAGGCTCACCGTGAATGTGTGCCATCATTACCAAACGCCCCACGA
 CATAACCATCCGGACCACCACCATGGCCCGCTCGAATGTGTGCCACAGGTACCCAAACCCCTCAGATT
 GCCTGGCAGAAGGATGGAGGCACGGATTTCCCGCTGCCGTGAGCGACGCATGCATGTCTGCCGATG
 ACGACGTGTTTTTCATCACTGATGTGAAAATAGATGACGCGAGGGTTTACAGTGTACTGCTCAGAACTC
 AGCCGGTTCTATTTAGCTAATGCCACCCTGACTGTCCTAGAGACCCCATCCTTGGTGGTCCCCTTGAA
 GACCGTGTGGTATCTGTGGGAGAAACAGTGGCCCTCCAATGCAAAGCCACGGGGAACCTCCGCCCGCA
 TCACCTGGTTCAAGGGGACCGCCCGTGAAGCCTACTGAGCGGCACCACTTGACCCCTGACAACACAGCT
 CCTGGTGGTTCAGAAGTGGTGGCAGAGGATGCGGGCCGATACCTGTGAGATGTCCAACACCTGGGC
 ACGGAGCGAGCTCACAGCCAGTGAAGTGTGCTGCCCGCAGCAGGTCAGGAAGGATGGGACCACGGTAG
 GCATCTTACCATTGCTGCTGAGCAGCATCGTCTGACGTACTGGTCTGGGTGTGCATCATCTACCA
 GACCAGGAAGAAGAGTGAAGGTACAGTGTACCAACACAGATGAAACCGTCTGCCACCAGATGTTCCA
 AGCTACCTCTCTTCTCAGGGACCTTTCTGACGACAAGAAACCGTGGTCAGGACCGAGGGTGGCCCTC
 AGGCCAATGGGCACATTGAGAGCAATGGTGTGTGTCCAAGAGATGCAAGCCACTTTCAGAGCCCGACAC
 TCACAGCGTTGCCTGCAGGCAGCCAAAGCTCTGTGCTGGGTCTGCGTATCACAAGAGCCGTGAAAGCG
 ATGGAGAAAGCTGAAGGGACACCTGGGCCACATAAGATGGAACACCGTGGCCGGGTGCTATGCAGTGACT
 GCAACACCGAAGTGGACTGTTACTCCAGGGGACAAGCCTTCCACCCAGCCTGTGTCCAGAGACAGCGC
 ACAGCCAAGTGCCTCAATGGCCCGAGCCGGTGGGAGTGACCAAGAGCATTCTCCACATCACCAGTGC
 AGCAGGACTGCCCTGGTCTGCCCGAGTCCAAGGGTGCCTTACCCAGTAACCACGATAGAATGC
 TGACGGCTGTGAAGAAAAGCCAATGGCATCTCTAGATGGAAAGGGGATTCTTCTGGACTTTAGCAAG
 GTTGATCACCCGACTCCACAGAGCTACAGCCTGCATCTTATTAACCTCAGGCAGTCCAGAGCGCGG
 GAAGCCAGTACTTGCTGTTTCCAATGCCACCTCCCAAGCATGTGACGCCAGTCCCGAGTCCACGC
 CACTGACAGGACAGCTCCCGGGAACAGAGGGTGCCACTGCTGTTGGCACCAAAAAGC

ACGCGTACGCGGCCGCTCGAGCAGAAACTCATCTCAGAAGAGGATCTGGCAGCAATGATATCCTGGATT
 ACAAGGATGACGACGATAAGGTTTAA

Protein Sequence:

>RC223584 representing NM_015541
 Red=Cloning site Green=Tags(s)

MARPVRRGLGAPRRSPCLLLLWLLLLRLEPVTAAGPRAPCAAACCTCAGDSLDCGGRGLAALPGDLPSWT
 RSLNL SYNKLSEIDPAGFEDLPNLQEVYLNNELEAVPSLGAASSHVVSFLQHNKIRSVESGSQLKAYLS
 LEVLDLSLNNITEVRNTCFPHGPPKELNLAGNRIGTLELGAFDGLSRSLTLRLSKNRITQLPVRAFKL
 PRLTQLDLNRNRIEGLTFQGLNSLEVLKLRNNISKLTDGAFWGLSKMHVHLHLEYNLSLEVNSGSLY
 GLTALHQLHLNNSIARIHRKGSFQKLHEL VLSFNNTLRLDEESLAE LSSLVLR LSHNSISHIAEGA
 FKGLRSLRVLDLDHNEISGTIEDTSGAFSGLDSL SKLTLFGNKIKSVAKRAFSGLEGLEHLNLGGNAIRS
 VQFDFAVKMKNLKELHISDSSFLCDCQLKWLPPWLI GRMLQAFVTATCAHPESLKGQSIFSVPPESFVCD
 DFLKQPITQPETTMAMVGDIRFTCSAASSSSPMTFAWKKDNEVL TNADMENFVHVHAQDGEVMEYTT
 ILHLRQVTFGHEGRYQCVITNHFSTYSHKARLTVNVLPSTKTPHDITIRTTT MARLECAATGHPNPQI
 AWQKDDGTDFFAARERRMHVMPDDVFFITDVKIDDAGVYSCTA QNSAGSISANATLTVLETPSLVPLE
 DRVVSVGETVALQCKATGNPPRITWFKGDRPLSLTERHHLTPDNQLLVQNVVAEDAGRYTCESNTLG
 TERAHSQLSVLPAAAGCRKDGTGIFTIIVVSSIVL TSLVWVCIIYQTRKKSEEYSVTNTDET VVPPDVP
 SYLSSQGLSDRQETVVRTEGGPQANGHIESNGVCPDASHFPEPDTHSVACRQPKLCAGSAYHKEPWKA
 MEKAEGTPGPHKMEHGGRVVCSDCNTEVDCYSRQAFHPQPVSRDSAQPSAPNGPEPGGSDQEHSPHHQC
 SRTAAGSCPEQCQGLYPSNHDRMLTAVKKKPMASLDGKGDSSWTLARLYHPDSTELQPASSLTSGSPERA
 EAQYLLVSNHGLPKACDASPESTPLTGQLPGKQRPVPLLLAPKS

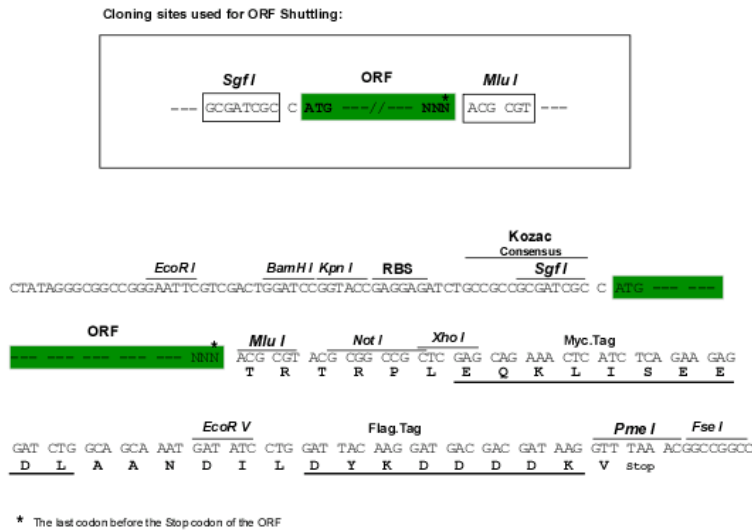
TRTRPLEQKLI SEEDLAANDILDYKDDDDKV

Chromatograms:

https://cdn.origene.com/chromatograms/ja1660_g05.zip

Restriction Sites: SgfI-MluI

Cloning Scheme:



ACCN: NM_015541

ORF Size: 3279 bp

OTI Disclaimer: The molecular sequence of this clone aligns with the gene accession number as a point of reference only. However, individual transcript sequences of the same gene can differ through naturally occurring variations (e.g. polymorphisms), each with its own valid existence. This clone is substantially in agreement with the reference, but a complete review of all prevailing variants is recommended prior to use. [More info](#)

OTI Annotation: This clone was engineered to express the complete ORF with an expression tag. Expression varies depending on the nature of the gene.

Components: The ORF clone is ion-exchange column purified and shipped in a 2D barcoded Matrix tube containing 10ug of transfection-ready, dried plasmid DNA (reconstitute with 100 ul of water).

Reconstitution Method:

1. Centrifuge at 5,000xg for 5min.
2. Carefully open the tube and add 100ul of sterile water to dissolve the DNA.
3. Close the tube and incubate for 10 minutes at room temperature.
4. Briefly vortex the tube and then do a quick spin (less than 5000xg) to concentrate the liquid at the bottom.
5. Store the suspended plasmid at -20°C. The DNA is stable for at least one year from date of shipping when stored at -20°C.

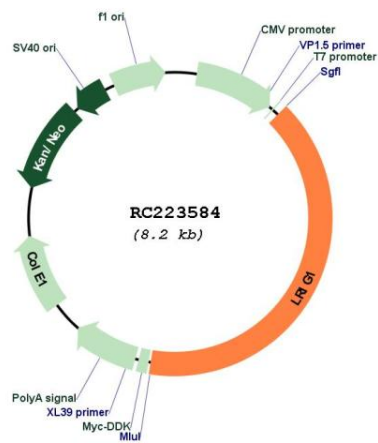
Note: Plasmids are not sterile. For experiments where strict sterility is required, filtration with 0.22um filter is required.

RefSeq: [NM_015541.3](#)

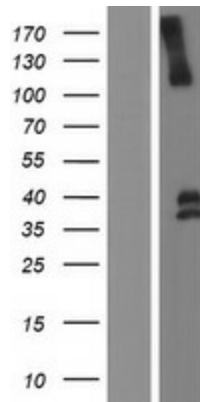
RefSeq Size: 4812 bp

RefSeq ORF: 3282 bp

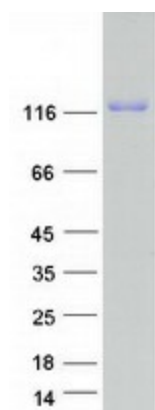
Locus ID: 26018
UniProt ID: [Q96JA1](#)
Cytogenetics: 3p14.1
Domains: LRRNT, LRRCT, LRR, ig, LRR_TYP, IGc2, IG, LRR_SD22, LRR_PS
Protein Families: Transmembrane
MW: 118.9 kDa
Gene Summary: Acts as a feedback negative regulator of signaling by receptor tyrosine kinases, through a mechanism that involves enhancement of receptor ubiquitination and accelerated intracellular degradation.[UniProtKB/Swiss-Prot Function]

Product images:


Circular map for RC223584



Western blot validation of overexpression lysate (Cat# [LY414487]) using anti-DDK antibody (Cat# [TA50011-100]). Left: Cell lysates from untransfected HEK293T cells; Right: Cell lysates from HEK293T cells transfected with RC223584 using transfection reagent MegaTran 2.0 (Cat# [TT210002]).



Coomassie blue staining of purified LRIG1 protein (Cat# [TP323584]). The protein was produced from HEK293T cells transfected with LRIG1 cDNA clone (Cat# RC223584) using MegaTran 2.0 (Cat# [TT210002]).