

Product datasheet for **RC223580**

RASGRF2 (NM_006909) Human Tagged ORF Clone

Product data:

Product Type:	Expression Plasmids
Product Name:	RASGRF2 (NM_006909) Human Tagged ORF Clone
Tag:	Myc-DDK
Symbol:	RASGRF2
Synonyms:	GRF2; RAS-GRF2
Mammalian Cell Selection:	Neomycin
Vector:	pCMV6-Entry (PS100001)
E. coli Selection:	Kanamycin (25 ug/mL)
ORF Nucleotide Sequence:	>RC223580 representing NM_006909 Red=Cloning site Blue=ORF Green=Tags(s)

TTTTGTAATACGACTCACTATAGGGCGGCCGGAATTCGTCGACTGGATCCGGTACCGAGGAGATCTGCC
GCC**CGATCGCC**

ATGCAGAAGAGCGTGCCTACAACGAGGGGCACGCCCTGTACCTGGCCTTTCTGGCGCGCAAGGAGGGCA
CCAAGCGCGGCTTCTGAGTAAGAAGACGGCCGAGGCGAGCCGCTGGCACGAGAAGTGGTTCGCCCTCTA
CCAGAATGTGCTTTCTACTTCGAGGGCGAGCAGAGCTGCCGCCCGGGCGGCATGTACCTCTGGAGGGC
TGCAGCTGCGAACGAACGCCCGCCACCCAGGCGCGGCCGGGAGGGAGCGTCCGAGACGCGCTGG
ACAAGCAGTATTACTTTACTGTTCTTTTGGCCATGAAGGTCAGAAGCCACTGGAGCTGCGCTGTGAGGA
GGAGCAGGATGGTAAAGAGTGGATGGAGGCCATTCACCAAGCCAGTTATGCAGACATTTTGATTGAGAGG
GAAGTATTAATGCAGAAGTACATTCATCTAGTTTCAGATCGTAGAGACAGAAAAATTGCAGCTAACCAAC
TCCGACATCAACTGAAGATCAAGACACAGAAATCGAAAGGCTTAAATCAGAGATTATTGCTCTTAATAA
AACCAAGAACGAATGCGACCTTACCAAGCAACCAAGAAGACGAAGATCCAGACATCAAGAAGATTA
AAGGTTTCAGAGCTTCATGCGAGGATGGTGTGCAGAAGGAAATGGAAGACCATCGTGCAGGATTACATTT
GTTCTCCTCATGCTGAAAGTATGAGGAAGAGAAACCAGATTGTGTTCCACCATGGTGGAGGCAGAGTCAGA
GTACGTTCCACAGCTCTACATCTGGTCAATGGCTTTTCCGGCCCTGCGTATGGCCGCCAGCTCCAAG
AAGCCCCCATCAGCCACGACGCTCAGCAGTATTTTTCTAACAGTGAACAATCATGTTTCTTCATG
AAATATTTTCATCAAGGACTAAAGGCAAGGATAGCAAACTGGCCCACTTTAATTTTAGCTGATCTGTTTGA
TATTTTGTCCCCATGCTGAACATTTATCAAGAATTTGTGCGTAATCACCAGTACAGCCTGCAAGTTCTC
GCCAATTGTAAGCAAAACAGAGATTTTGACAACTCTTAAACAGTATGAAGCCAATCCAGCCTGTGAGG
GGAGGATGCTGGAGACATTCTTGACCTATCCCATGTTTCAGATCCCAGATATATCATCACACTCCATGA
GCTCCTTGCTCACACACCCCATGAGCATGTGGAAGGAAAGCCTGGAGTTTGCCAAATCAAAGCTAGAG
GAACTATCCAGAGTAATGCACGATGAAGTCAGCGACACTGAAAACATAAGGAAAAACCTTGCCATCGAAA
GAATGATCGTGGAGGGCTGTGACATCTTGTGGACACCAGCCAAACGTTTCATCCGCAAGGTTCTCTTAT
TCAAGTACCTTCGTTGAGAGGGGAAACTTAGTAAAGTTCGCCCTGGGTTGCTTGTGAAAAAGGAA



[View online >](#)

GGAGAGACAATGCTTCTTATTTACAAAACTTTTTAATATGTACAAGAAGTTCAGGAGGGAAGCTTC
ATCTGCTCAAGACAGGTGGGGTTCTGTCTTAATAGACTGCACATTGATTGAGGAGCCAGATGCAAGCGA
TGATGACTCTAAAGTTCTGGGCAAGTGTGGGCACCTGGATTTAAAAATAGTGGTGGAGCCTCCTGAC
GCTGCCGCTTCACTGTTGTCTTGTAGCACCTCACGCCAGGAGAAAGCTGCCTGGATGAGTGACATCA
GTCAGTGTGTGGACAATACGATGTAATGGTTAATGACTATAGTGTGAAGAGAATCCAAAGTCAC
TGTGCCACATGATTAAGTCTGATGCCCGTCTCATAAAGACGACACTGACATTTGCTTCAGTAAAAA
CTCAACTCCTGCAAAGTGCCCCAGATCCGTTATGCCAGCGTGGAGCGCCTCTTGGAACACTGACAGACT
TGCGGTTTTCTTAGTATTGATTTCTCAACACCTTCTGCACACCTATCGTATTTTCACTACTGCCGCTGT
GGTGCTGGGAAACTCTCCGACATATACAAGAGGCCTTTCACCTCCATCCCTGTCAAGTCAATTGGAATTG
TTTTTGTCTACCAGCCAGAACAACAGAGGTGAACATTTGGTGGATGGCAAATCCCCACGTCTGTGTGCGA
AATTCTCTTCCCCGCCACTGGCTGTGTCCAGAACATCTTCCCAGTGAGGGCCAGAAAGCTGTCTTT
GACTTCTCCCTTGAACCTCAAAGATAGGAGCATTGGACCTGACAACTTCCAGCAGTCCCACCACCACC
CAGAGTCCCGTGCCTCTCCACCACCACACTGGTCAGATACCCTGGATCTCAGCAGAGGCCTCTCTT
CTCCAGAGCAAAGCCCGGAACGGTAGAAGAGAATGTCGATAACCCACGCGTGGATCTGTGTAACAAGCT
AAAACGAAGTATCAAAAAGCAGTCTAGAGTCTGCACCAGCGGACCGAGCAGGAGTGGAAAGCTCCCT
GCAGCGGACACCACAGAACTTTCACCTTGAGATCCCCCTCAACTCCTCGGCACCTCCGCTATCGACAGC
CTGGAGGACAGACGGCGGACAATGCCACTGCTCTGTTTCACCGCTTCTGCTTTTGAATAGCCACAGC
TGCAGCAGGACATGGGAGTCCACCAGGCTTAAACAACACCAGAGAAACATGTGATAAAGAGTTTATTATA
CGGAGAACGGCTACCAATCGAGTCTGAACGCTCTCCGTCACTGGGTCTCAAAGCACGCACAGGATTTG
AACTCAACAATGAACTAAAGATGAATGTCTAAATTTGCTAGAAGAAGTTTTGCGAGACCCAGACCTTCT
TCCCCAAGAAAGGAAAGCCCGCGAATATCCTCAGGGCCCTTTCACAAGATGACCAAGATGACATCCAC
CTAAAATTAGAGGATATAATTCAAATGACTGACTGCATGAAGGCCGAATGCTTTGAGTCTTGTGCGCCA
TGGAGCTGGCAGAACAGATCACCTCCTGGACCATGTCATTTTTCAGAAGCATTCCCTACGAGGATTTCT
TGGGCAGGGGTGGATGAAGCTGGATAAAAACGAAAGAATCCTTACATTATGAAAACCAGCCAACACTTC
AATGACATGAGTAACCTGGTGGCTCCCAGATAATGAACTATGCTGATGTGAGTCCCCTGCCAACGCCA
TCGAGAAATGGGTGGCAGTGGCGGACATCTGCCGATGCCTGCACAACTACAACGGCGTGTGGAGATCAC
CTCGGCCTTAAACAGAAGTGCCATCTACAGGCTGAAGAAAACCTGGGCCAAGGTCTCTAAGCAGACAAA
GCTCTAATGGACAACTTCAAAGACTGTTTCTCTGAAGGAAGATTTAAAAATCTTAGAGAAACCTTA
AAAATTGTAACCCTCCTGCAGTTCCTTATCTTGGGATGTACTTGACAGACCTGGCATTATTGAAGAAGG
AACACAAACTTTACTGAGGAAGCCTTGTCAATTTCTCCAAAATGAGAATGATATCACACATCATCAGA
GAGATACGCCAGTCCAGCAGACTTCTACAGAATAGATCATCAGCCAAAGGTGCACAGTACTTGCTTG
ACAAAGACCTTATCATAGATGAAGATACGCTATATGAGCTGTCACTAAAAATTGAACCTCGACTCCCTGC
T

ACGCGGCCGCTCGAGCAGAACTCATCTCAGAAGAGGATCTGGCAGCAAATGATATCCTGGA
TTACAAGGATGACGACGATAAGGTTTAA

Protein Sequence: >RC223580 representing NM_006909
 Red=Cloning site Green=Tags(s)

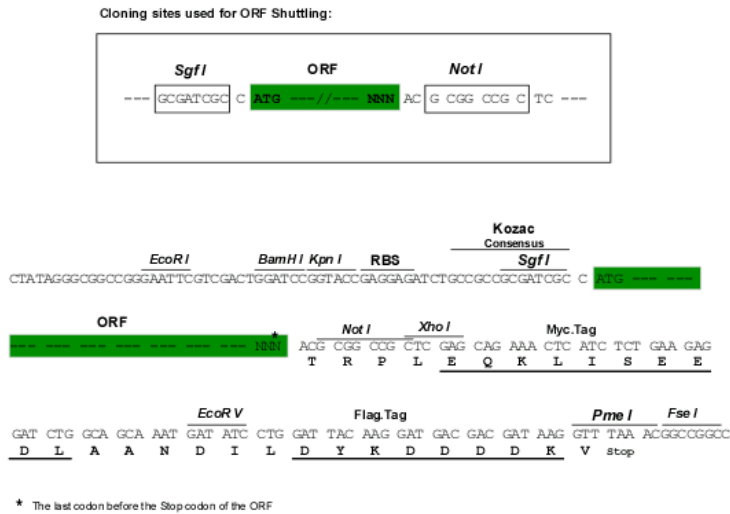
MQKSVRYNEGHALYLAFARKEGTRKGFSLKKTAEASRWHEKWFALYQNVLFYFEGEQSCRPAAGMYLLEG
 CSCERTPAPPRAGAGQGGVRDALDKQYYFTVLFHGEGQKPLELRCEEEQDGKEWMEAIHQASYADILIER
 EVLMQKYIHLVQIVETEKIAANQLRHQLEDQDTEIERLKSEIIALNKTKERMRPYQSNQDEDPDIKKIK
 KVQSFMRGWLCCRKWKTI VQDYICSPHAESMRKRNIQIVTMVEAESEYVHQLYIILVNGFLRPLRMAASSK
 KPPI SHDDVSSIFLNSETIMFLHEIFHQGLKARIANWPTLILADLFDILLPMLNIYQEFVRNHQYSLQVL
 ANCKQNRDFDKLLKQYEANPACEGRMLETFLTYPMFQIPRYIITLHELLAHTPHEHVERKSLEFAKSKLE
 ELSRVMHDEVSDTENIRKNLAIERMIVEGCDILLDSQTFIRQGS LIQVPSVERGKLSKVR LGSLSLKKKE
 GERQCFLFTKHF LICTRSSGGKLHLLKTGGVLSLIDCTLIEEPDASDDDSKSGSQVFGHLD FKIVVEPPD
 AAFTVLLAPS RQEKAAWMSDISQCVDNIRCNGLMTIVFEENSKVTVP HMIKSDARLHKDDTDICFSKT
 LNSCKVPQIRYASVERLLERL TDLRFLSIDFLNTFLHTYRIFTTAAVVLGKLSDIYKRPF TSI PVRSL EL
 FFATSQNNRGEHLVDGKSPRLCRKFSPPPLAVSRTSSPVRARKLSLTSPLNSKIGALDLTSSSPTTTT
 QSPAASPPHTGQIPLDL SRGLSSPEQSPGTVEENVNPRVDLCNKLKRSIQKAVLESAPADRAGVESSP
 AADTTELSPCRSPSTPRHLRYRQPGGTADNAHCSVSPASAFIAIATAAAGHGSPPGFNNTERTCDKEFII
 RRTATNRVNLVLRHWVSKHAQDFELNNELKMNVLNLL EEVLRDPDLLPQERKAAANILRALSQDDQDDIH
 LKLEDIIQMTDCMKAECFESL SAMELAEQITLLDHVIFRSIPYEEFLGQGMKLDKNERTPYIMKTSQHF
 NDMSNLVASQIMNYADVSSRANAIEKWVAVADICRCLHNYNGVLEITSALNRS AIYRLKKTWAKVSKQTK
 ALMDKLQKTVSSEGRFKNLRETLKNCNPPAVPYLGMYL TDLAFIEEGTPNFTEEGLVNF SKMRMISHIR
 EIRQFQQTSYRIDHQPKVAQYLLDKDLI IDEDTLYELSLKIEPRLPA

TRRLEQKLI SEEDLAANDILDYKDDDDKV

Chromatograms: https://cdn.origene.com/chromatograms/mg3816_b09.zip

Restriction Sites: SgfI-NotI

Cloning Scheme:

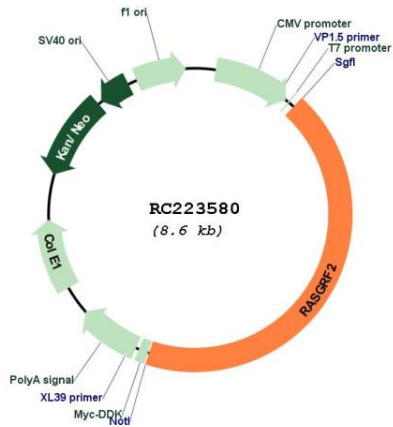


ACCN: NM_006909

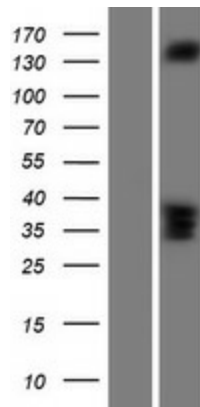
ORF Size: 3711 bp

OTI Disclaimer:	The molecular sequence of this clone aligns with the gene accession number as a point of reference only. However, individual transcript sequences of the same gene can differ through naturally occurring variations (e.g. polymorphisms), each with its own valid existence. This clone is substantially in agreement with the reference, but a complete review of all prevailing variants is recommended prior to use. More info
OTI Annotation:	This clone was engineered to express the complete ORF with an expression tag. Expression varies depending on the nature of the gene.
Components:	The ORF clone is ion-exchange column purified and shipped in a 2D barcoded Matrix tube containing 10ug of transfection-ready, dried plasmid DNA (reconstitute with 100 ul of water).
Reconstitution Method:	<ol style="list-style-type: none">1. Centrifuge at 5,000xg for 5min.2. Carefully open the tube and add 100ul of sterile water to dissolve the DNA.3. Close the tube and incubate for 10 minutes at room temperature.4. Briefly vortex the tube and then do a quick spin (less than 5000xg) to concentrate the liquid at the bottom.5. Store the suspended plasmid at -20°C. The DNA is stable for at least one year from date of shipping when stored at -20°C.
RefSeq:	NM_006909.3
RefSeq Size:	4078 bp
RefSeq ORF:	3714 bp
Locus ID:	5924
UniProt ID:	O14827
Cytogenetics:	5q14.1
Protein Pathways:	MAPK signaling pathway
MW:	140.6 kDa
Gene Summary:	RAS GTPases cycle between an inactive GDP-bound state and an active GTP-bound state. This gene encodes a calcium-regulated nucleotide exchange factor activating both RAS and RAS-related protein, RAC1, through the exchange of bound GDP for GTP, thereby, coordinating the signaling of distinct mitogen-activated protein kinase pathways. [provided by RefSeq, Oct 2011]

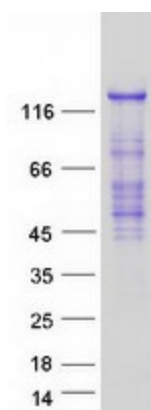
Product images:



Circular map for RC223580



Western blot validation of overexpression lysate (Cat# [LY416330]) using anti-DDK antibody (Cat# [TA50011-100]). Left: Cell lysates from untransfected HEK293T cells; Right: Cell lysates from HEK293T cells transfected with RC223580 using transfection reagent MegaTran 2.0 (Cat# [TT210002]).



Coomassie blue staining of purified RASGRF2 protein (Cat# [TP323580]). The protein was produced from HEK293T cells transfected with RASGRF2 cDNA clone (Cat# RC223580) using MegaTran 2.0 (Cat# [TT210002]).