

Product datasheet for **RC223579**

RSU1 (NM_152724) Human Tagged ORF Clone

Product data:

Product Type:	Expression Plasmids
Product Name:	RSU1 (NM_152724) Human Tagged ORF Clone
Tag:	Myc-DDK
Symbol:	RSU1
Synonyms:	RSP-1
Mammalian Cell Selection:	Neomycin
Vector:	pCMV6-Entry (PS100001)
E. coli Selection:	Kanamycin (25 ug/mL)
ORF Nucleotide Sequence:	>RC223579 ORF sequence Red=Cloning site Blue=ORF Green=Tags(s)

TTTTGTAATACGACTCACTATAGGGCGGCCGGAATTCGTCGACTGGATCCGGTACCGAGGAGATCTGCC
GCC**CGGATCGCC**

ATGTCCAAGTCTCTGAAGAAGTTGGTGGAGGAGAGCCGGGAGAAGAACCAGCCCGAGGTGGACATGAGTG
ACCGGGGCATCTCCAACATGCTGGATGTCAACGGCCTCTTTACCTTATCCCATATCACACAACTGGTCCT
CAGCCATAACAAGCTAACAATGGTGCCACCGAACATCGCAGAAGTGAAGAATTTGGAGGTGCTCAACTTT
TTTAATAACCAAATCGAGGAGCTGCCACACAGATCAGTAGCCTTCAGAACTCAAACACCTGAACCTTG
GCATGAACAGGCTGAACACTTTGCCACGAGGCTTCGGCTCCCTGCCAGCTCTTGAGGTTCTGGACTTGAC
GTACAACAACTTGAGCGAAAATCTCTTCTGGAACTTCTTCTACCTGACCACCCTGCGTGCACCTCTAT
CTAAGTGACAACGATTTTGAAATCCTGCCGCCAGATATTGGGAAGCTCACAAAGTTGCAGATACTCAGCC
TTAGGGATAACGACCTGATCTCGCTGCCTAAGGAAATCGGGGAGCTTACCCAGCTTAAAGAGCTCCACAT
TCAGGGGAACCGCCTCACCGTTCTGCCCCAGAAGTGGAACTTGGATTTAACTGGCCAGAAGCAGGTA
TTCAAAGCAGAGAACAATCCCTGGGTGACCCCATTCAGACCAGTTCAGCTTGGCGTGTCCCATGTTT
TTGAGTATATCCGTTCTGAGACATACAAATACCTCTACGGCAGACACATGCAGGCCAACCCAGAACCACC
GAAGAAGAATAATGACAAATCGAAAAAGATCAGCCGAAAACCCCTGGCAGCCAAGAACAGA

ACGCGTACGCGGCCGCTCGAGCAGAACTCATCTCAGAAGAGGATCTGGCAGCAAATGATATCCTGGATT
ACAAGGATGACGACGATAAGGTTTAA



[View online »](#)

Protein Sequence: >RC223579 protein sequence
Red=Cloning site Green=Tags(s)

MSKSLKKLVEESREKNQPEVMSDRGISNMLDVNGLFTLSHITQLVLSHNKLTMVPPNIAELKNLEVLNF
 FNNQIEELPTQISSLQKLKHLNLMNRLNLTLPGRFGSLPALEVLDTYNNLSENSLPGNFFYLTLRALY
 LSDNDFEILPPDIGLTKLQILSLRDNDLISLPKEIGELTQLKELHIQGNRLTVLPPELGNLDTGQKQV
 FKAENNPWVTPIADQFQLGVSHVFEYIRSETYKYL YGRHMQANPEPPKKNNDKSKKISRKPLAAKNR

TRTRPLEQKLISEEDLAANDILDYKDDDDKV

Chromatograms: https://cdn.origene.com/chromatograms/mk6416_d04.zip

Restriction Sites: SgfI-MluI

Cloning Scheme:

Cloning sites used for ORF Shuttling:



* The last codon before the Stop codon of the ORF

ACCN: NM_152724

ORF Size: 831 bp

OTI Disclaimer: The molecular sequence of this clone aligns with the gene accession number as a point of reference only. However, individual transcript sequences of the same gene can differ through naturally occurring variations (e.g. polymorphisms), each with its own valid existence. This clone is substantially in agreement with the reference, but a complete review of all prevailing variants is recommended prior to use. [More info](#)

OTI Annotation: This clone was engineered to express the complete ORF with an expression tag. Expression varies depending on the nature of the gene.

Components: The ORF clone is ion-exchange column purified and shipped in a 2D barcoded Matrix tube containing 10ug of transfection-ready, dried plasmid DNA (reconstitute with 100 ul of water).

Reconstitution Method:

1. Centrifuge at 5,000xg for 5min.
2. Carefully open the tube and add 100ul of sterile water to dissolve the DNA.
3. Close the tube and incubate for 10 minutes at room temperature.
4. Briefly vortex the tube and then do a quick spin (less than 5000xg) to concentrate the liquid at the bottom.
5. Store the suspended plasmid at -20°C. The DNA is stable for at least one year from date of shipping when stored at -20°C.

Note: Plasmids are not sterile. For experiments where strict sterility is required, filtration with 0.22um filter is required.

RefSeq: [NM_152724.2](#), [NP_689937.2](#)

RefSeq Size: 3657 bp

RefSeq ORF: 675 bp

Locus ID: 6251

UniProt ID: [Q15404](#)

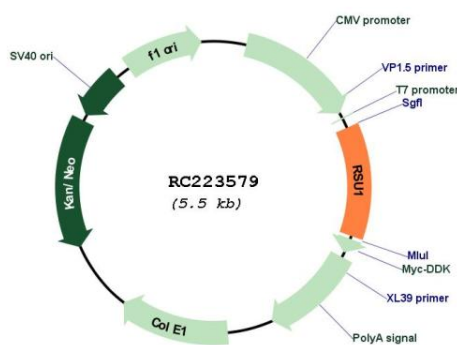
Cytogenetics: 10p13

Protein Families: Druggable Genome

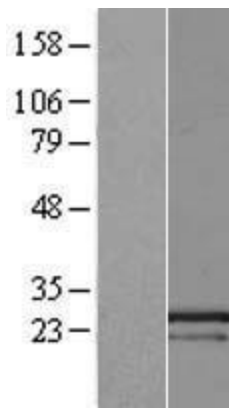
MW: 31.5 kDa

Gene Summary: This gene encodes a protein that is involved in the Ras signal transduction pathway, growth inhibition, and nerve-growth factor induced differentiation processes, as determined in mouse and human cell line studies. In mouse, the encoded protein was initially isolated based on its ability to inhibit v-Ras transformation. Multiple alternatively spliced transcript variants for this gene have been reported; one of these variants was found only in glioma tumors. [provided by RefSeq, Jul 2008]

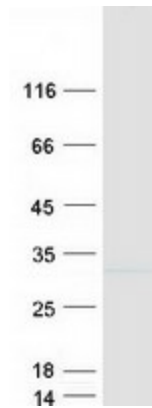
Product images:



Circular map for RC223579



Western blot validation of overexpression lysate (Cat# [LY407344]) using anti-DDK antibody (Cat# [TA50011-100]). Left: Cell lysates from untransfected HEK293T cells; Right: Cell lysates from HEK293T cells transfected with RC223579 using transfection reagent MegaTran 2.0 (Cat# [TT210002]).



Coomassie blue staining of purified RSU1 protein (Cat# [TP323579]). The protein was produced from HEK293T cells transfected with RSU1 cDNA clone (Cat# RC223579) using MegaTran 2.0 (Cat# [TT210002]).