

Product datasheet for **RC223575**

CTIP1 (BCL11A) (NM_138559) Human Tagged ORF Clone

Product data:

Product Type:	Expression Plasmids
Product Name:	CTIP1 (BCL11A) (NM_138559) Human Tagged ORF Clone
Tag:	Myc-DDK
Symbol:	CTIP1
Synonyms:	BCL11A-L; BCL11a-M; BCL11A-S; BCL11A-XL; CTIP1; DILOS; EVI9; HBFQTL5; ZNF856
Mammalian Cell Selection:	Neomycin
Vector:	pCMV6-Entry (PS100001)
E. coli Selection:	Kanamycin (25 ug/mL)
ORF Nucleotide Sequence:	>RC223575 representing NM_138559 Red=Cloning site Blue=ORF Green=Tags(s)

TTTTGTAATACGACTCACTATAGGGCGGCCGGAATTCGTCGACTGGATCCGGTACCGAGGAGATCTGCC
GCC**CGATCGCC**

ATGTCTCGCCGCAAGCAAGGCAAACCCAGCACTTAAGCAAACGGGAATTCTCGCCGAGCCTCTTGAAG
CCATTCTACAGATGATGAACCAGACCACGGCCCGTTGGGAGCTCCAGAAGGGGATCATGACCTCCTCAC
CTGTGGGCAGTGCCAGATGAACCTCCATTGGGGGACATTCTTATTTTTATCGAGCACAAACGGAAACAA
TGCAATGGCAGCCTCTGCTTAGAAAAAGCTGTGGATAAGCCACCTCCCCTTACCAATCGAGATGAAAA
AAGCATCCAATCCCGTGGAGTTGGCATCCAGGTACGCCAGAGGATGACGATTGTTATCAACGTCATC
TAGAGGAATTTGCCCAAACAGGAACACATAGCAGATAAACTTCTGCACTGGAGGGGCCTCTCTCCCT
CGTTCTGCACATGGAGCTCTAATCCCCACGCCTGGGATGAGTGCAGAATATGCCCCGAGGGTATTTGTA
AAGATGAGCCCAGCAGCTACACATGTACAACCTGCAAACAGCCATTCACCAGTGCATGGTTTCTCTTGCA
ACACGCACAGAACTCATGGATTAAGAATCTACTTAGAAAGCGAACACGGAAAGTCCCCTGACCCCGCGG
GTTCTTACACACCCCATTCGGCGTAGTACCCAGAGAGCTCAAGATGTGTGGCAGTTTTTCGGATGGAAG
CTCGAGAGCCCTTAAGTTCTGAGAAAATT

ACGCGTACGCGGCCGCTCGAGCAGAACTCATCTCAGAAGAGGATCTGGCAGCAAATGATATCTGGATT
ACAAGGATGACGACGATAAGGTTTAA



[View online »](#)

Protein Sequence: >RC223575 representing NM_138559
 Red=Cloning site Green=Tags(s)

MSRRKQGKQHL SKREFSPEPLEAILT DDEPDHGPLGAPEGDHDLLTCGQCQMNFLGDILIFIEH KRKQ
 CNGSLCLEKAVDKPPSPSPIEMKKASNPVEVGIQVTPEDDDCLSTSSRGICPKQEHIADKLLHWRGLSSP
 RSAHGALIPTPGMSAEYAPQGICKDEPSSYTCTTCKQPFTSAWFL LQHAQNT HGLRIYLESEHGSP LTPR
 VLHTPPFGVVPRELKMGCSFRMEAREPLSSEKI

TRTRPLEQKLISEEDLAANDILDYKDDDDKV

Chromatograms: https://cdn.origene.com/chromatograms/mk8047_c11.zip

Restriction Sites: SgfI-MluI

Cloning Scheme:



ACCN: NM_138559

ORF Size: 729 bp

OTI Disclaimer: The molecular sequence of this clone aligns with the gene accession number as a point of reference only. However, individual transcript sequences of the same gene can differ through naturally occurring variations (e.g. polymorphisms), each with its own valid existence. This clone is substantially in agreement with the reference, but a complete review of all prevailing variants is recommended prior to use. [More info](#)

OTI Annotation: This clone was engineered to express the complete ORF with an expression tag. Expression varies depending on the nature of the gene.

Components: The ORF clone is ion-exchange column purified and shipped in a 2D barcoded Matrix tube containing 10ug of transfection-ready, dried plasmid DNA (reconstitute with 100 ul of water).

Reconstitution Method:

1. Centrifuge at 5,000xg for 5min.
2. Carefully open the tube and add 100ul of sterile water to dissolve the DNA.
3. Close the tube and incubate for 10 minutes at room temperature.
4. Briefly vortex the tube and then do a quick spin (less than 5000xg) to concentrate the liquid at the bottom.
5. Store the suspended plasmid at -20°C. The DNA is stable for at least one year from date of shipping when stored at -20°C.

RefSeq: [NM_138559.2](#)

RefSeq Size: 2358 bp

RefSeq ORF: 732 bp

Locus ID: 53335

UniProt ID: [Q9H165](#)

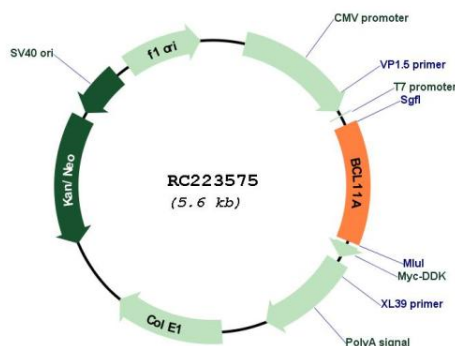
Cytogenetics: 2p16.1

Protein Families: Transcription Factors

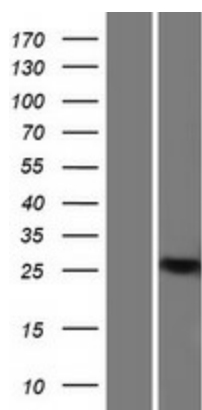
MW: 26.7 kDa

Gene Summary: This gene encodes a C2H2 type zinc-finger protein by its similarity to the mouse Bcl11a/Evi9 protein. The corresponding mouse gene is a common site of retroviral integration in myeloid leukemia, and may function as a leukemia disease gene, in part, through its interaction with BCL6. During hematopoietic cell differentiation, this gene is down-regulated. It is possibly involved in lymphoma pathogenesis since translocations associated with B-cell malignancies also deregulates its expression. Multiple transcript variants encoding several different isoforms have been found for this gene. [provided by RefSeq, Jul 2008]

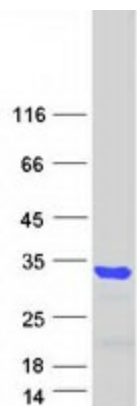
Product images:



Circular map for RC223575



Western blot validation of overexpression lysate (Cat# [LY408578]) using anti-DDK antibody (Cat# [TA50011-100]). Left: Cell lysates from untransfected HEK293T cells; Right: Cell lysates from HEK293T cells transfected with RC223575 using transfection reagent MegaTran 2.0 (Cat# [TT210002]).



Coomassie blue staining of purified BCL11A protein (Cat# [TP323575]). The protein was produced from HEK293T cells transfected with BCL11A cDNA clone (Cat# RC223575) using MegaTran 2.0 (Cat# [TT210002]).