

Product datasheet for **RC223566**

SDCCAG10 (CWC27) (NM_005869) Human Tagged ORF Clone

Product data:

Product Type:	Expression Plasmids
Product Name:	SDCCAG10 (CWC27) (NM_005869) Human Tagged ORF Clone
Tag:	Myc-DDK
Symbol:	SDCCAG10
Synonyms:	NY-CO-10; RPSKA; SDCCAG-10; SDCCAG10
Mammalian Cell Selection:	Neomycin
Vector:	pCMV6-Entry (PS100001)
E. coli Selection:	Kanamycin (25 ug/mL)



[View online »](#)

ORF Nucleotide Sequence:

>RC223566 representing NM_005869
 Red=Cloning site Blue=ORF Green=Tags(s)

TTTTGTAATACGACTCACTATAGGGCGGCCGGAATTCGTGACTGGATCCGGTACCGAGGAGATCTGCC
 GCC**CGCATCGCC**

ATGAGCAACATCTACATCCAGGAGCCTCCACGAATGGGAAGTTTTATTGAAAACACAGCTGGAGATA
 TTGACATAGAGTTGTGGTCCAAAGAAGCTCCTAAAGCTTGCAGAAATTTTATCCAACCTTTGTTTGGAAAGC
 TTATTATGACAATACCATTTTTTCATAGAGTTGTGCCTGGTTTCATAGTCCAAGGCGGAGATCCTACTGGC
 ACAGGGAGTGGTGGAGAGTCTATCTATGGAGCGCCATTCAAAGATGAATTTTCATTACGGTTGCGTTTTTA
 ATCGGAGAGGACTGGTTGCCATGGCAAATGCTGGTTTCATGATAATGGCAGCCAGTTTTTCTTCACT
 GGGTCGAGCAGATGAACCTAACAAATAAGCATACCATCTTTGGAAAGGTTACAGGGGATACAGTATATAAC
 ATGTTGCGACTGTCAGAAGTAGACATTGATGATGACGAAAGACCACATAATCCACACAAAATAAAAAAGCT
 GTGAGGTTTTGTTAATCCTTTTGTGACATCATTCCAAGGAAATTTAAAGGCTGAAAAAGAGAAACC
 AGAGGAGGAAGTAAAGAAATTGAAACCCAAAGGCACAAAAATTTTAGTTTACTTTTCATTGGAGAGGAA
 GCTGAGGAAGAAGAGGAGGAAGTAAATCGAGTTAGTCAGAGCATGAAGGGCAAAAGCAAAAGTAGTCATG
 ACTTGCTTAAGGATGATCCACATCTCAGTTCTGTTCCAGTTGTAGAAAAGTAAAAAGGTGATGCAGCAGA
 TTTAGTTGATGATGGAGAAGATGAAAGTGCAGAGCATGATGAATATTTGATGGTATGAAAAGAACCCTG
 ATGAGAGAAAGAATTGCCAAAAATTA AAAAAGGACACAAGTGCGAATGTTAAATCAGCTGGAGAAGGAG
 AAGTGGAGAAGAATCAGTCAGCCGAGTGAAGAGCTCAGAAAAGAAGCAAGACAATTA AACCGGAACT
 CTTAGCAGCAAAACAAAAAAGTAGAAAATGCAGCAAAACAAGCAGAAAAAGAAGTGAAGGAGGAAGAA
 GCCCTCCAGATGGTGTGTTGCCGAATACAGAAGAGAAAAGCAAAAGTATGAAGCTCTGAGGAAGCAAC
 AGTCAAAAGAGGAACTCCCGGGAAGATCAGACCTTGCAGTCTGAACCAAGTTAAATCTAAACTCAC
 TCAAGCAATTGCTGAAACGCCTGAAAATGACATTCCTGAAACAGAAAGTAGAAGATGATGAAGGATGGATG
 TCACATGTACTTCAGTTTGGAGATAAAAAGCAGAAAAGTGAAGATGCAAGCATGCAAGACTCAGATACAT
 TTGAAATCTATGATCCTCGGAATCCAGTGAATAAAAAGAGGAGGGAAGAAAGCAAAAAGCTGATGAGAGA
 GAAAAAGAAAGAAGA

ACGCGTACGCGGCCGCTCGAGCAGAAACTCATCTCAGAAGAGGATCTGGCAGCAATGATATCCTGGATT
 ACAAGGATGACGACGATAAGGTTTAA

Protein Sequence:

>RC223566 representing NM_005869
 Red=Cloning site Green=Tags(s)

MSNIYIQEPPTNGKVLKTTAGDIDIELWSKEAPKACRNFIQLCLEAYDNTIFHRVVPGFIVQGGDPTG
 TGSGGESIYGAPFKDEFHSRLRFNRRGLVAMANAGSHDNGSQFFFTLGRADELNNKHTIFGKVTGDTVYN
 MLRLSEVDIDDERPHNPHKIKSCEVLFNPFDDIIPREIKRLKKEKPEEEVKLKPAGTKNFSLLSFGEE
 AEEEEEEVNRVSQSMKGKSKSSHLLKDDPHLSSVPVVESEKGAADLVDDGEDESAEHDEYIDGDEKNL
 MRERIAKLLKDTSANVKSAGEGEVEKKSRSRSEELRKEARQLKRELLAAKQKVENAAKQAEKRSEEEE
 APPDGAVAEYRREKQKYEALRKQQSKKGT SREDQTLALLNQFKSKLTQAI AETPENDIPETEVEDDEGWM
 SHVLQFEDKSRVKDASMQSDTFE IYDPRNPVNKRREESKMLMREKKERR

TRTRPLEQKLI SEEDLAANDILDYKDDDDKV

Chromatograms:

https://cdn.origene.com/chromatograms/mk6484_f12.zip

Restriction Sites:

Sgfl-Mlul

Cloning Scheme:


ACCN: NM_005869

ORF Size: 1416 bp

OTI Disclaimer: The molecular sequence of this clone aligns with the gene accession number as a point of reference only. However, individual transcript sequences of the same gene can differ through naturally occurring variations (e.g. polymorphisms), each with its own valid existence. This clone is substantially in agreement with the reference, but a complete review of all prevailing variants is recommended prior to use. [More info](#)

OTI Annotation: This clone was engineered to express the complete ORF with an expression tag. Expression varies depending on the nature of the gene.

Components: The ORF clone is ion-exchange column purified and shipped in a 2D barcoded Matrix tube containing 10ug of transfection-ready, dried plasmid DNA (reconstitute with 100 ul of water).

- Reconstitution Method:**
1. Centrifuge at 5,000xg for 5min.
 2. Carefully open the tube and add 100ul of sterile water to dissolve the DNA.
 3. Close the tube and incubate for 10 minutes at room temperature.
 4. Briefly vortex the tube and then do a quick spin (less than 5000xg) to concentrate the liquid at the bottom.
 5. Store the suspended plasmid at -20°C. The DNA is stable for at least one year from date of shipping when stored at -20°C.

Note: Plasmids are not sterile. For experiments where strict sterility is required, filtration with 0.22um filter is required.

RefSeq: [NM_005869.4](#)

RefSeq Size: 2093 bp

RefSeq ORF: 1419 bp

Locus ID: 10283

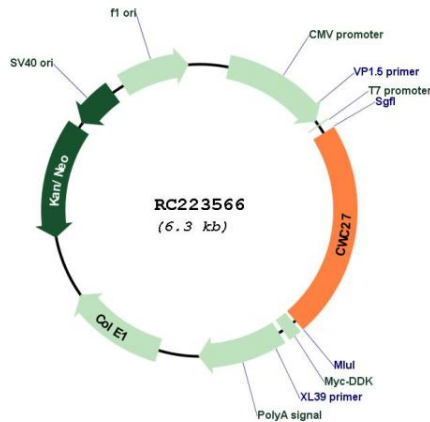
UniProt ID: [Q6UX04](#)

Cytogenetics: 5q12.3

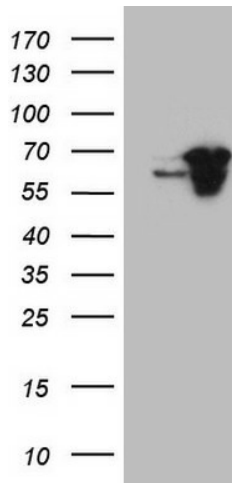
MW: 53.7 kDa

Gene Summary: As part of the spliceosome, plays a role in pre-mRNA splicing (PubMed:29360106). Probable inactive PPIase with no peptidyl-prolyl cis-trans isomerase activity (PubMed:20676357). [UniProtKB/Swiss-Prot Function]

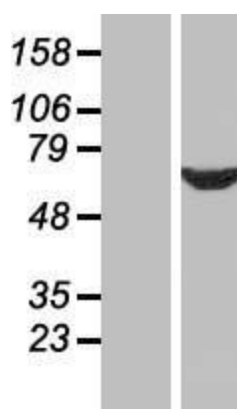
Product images:



Circular map for RC223566



HEK293T cells were transfected with the pCMV6-ENTRY control (Cat# [PS100001], Left lane) or pCMV6-ENTRY CWC27 (Cat# RC223566, Right lane) cDNA for 48 hrs and lysed. Equivalent amounts of cell lysates (5 ug per lane) were separated by SDS-PAGE and immunoblotted with anti-CWC27 (Cat# [TA808677])(1:2000). Positive lysates [LY417011] (100ug) and [LC417011] (20ug) can be purchased separately from OriGene.



Western blot validation of overexpression lysate (Cat# [LY417011]) using anti-DDK antibody (Cat# [TA50011-100]). Left: Cell lysates from untransfected HEK293T cells; Right: Cell lysates from HEK293T cells transfected with RC223566 using transfection reagent MegaTran 2.0 (Cat# [TT210002]).