

## Product datasheet for **RC223564**

### SLITRK6 (NM\_032229) Human Tagged ORF Clone

#### Product data:

Product Type:	Expression Plasmids
Product Name:	SLITRK6 (NM_032229) Human Tagged ORF Clone
Tag:	Myc-DDK
Symbol:	SLITRK6
Synonyms:	DFNMYP
Mammalian Cell Selection:	Neomycin
Vector:	pCMV6-Entry (PS100001)
E. coli Selection:	Kanamycin (25 ug/mL)



[View online »](#)

**ORF Nucleotide  
Sequence:**

>RC223564 representing NM\_032229  
 Red=Cloning site Blue=ORF Green=Tags(s)

TTTTGTAATACGACTCACTATAGGGCGGCCGGAATTCGTCGACTGGATCCGGTACCGAGGAGATCTGCC  
 GCC**CGCATCGCC**

ATGAAGCTGTGGATTCATCTCTTTTATTTCATCTCTCCTTGCTGTATATCTTTACTCCCAAACCTCCAG  
 TGCTCTCATCCAGAGGCTCTTGATTCTCTTTGCAATTGTGAGGAAAAAGATGGACAATGCTAATAAA  
 TTGTGAAGCAAAAAGGTATCAAGATGGTATCTGAAATAAGTGTGCCACCATCACGACCTTTCCAACAAAGC  
 TTATTAATAAACGGCTTGACGATGCTTCACACAAATGACTTTTCTGGGCTTACCAATGCTATTTCAATAC  
 ACCTTGGATTTAACAATATTGCAGATATTGAGATAGGTGCATTTAATGGCCTTGGCTCTGAAACAACCT  
 TCATATCAATCACAATCTTTAGAAATCTTAAAGAGGATACTTTCCATGGACTGGAAAACCTGGAATTC  
 CTGCAAGCAGATAACAATTTTATCACAGTGATTGAACCAAGTGCCTTTAGCAAGCTCAACAGACTCAAAG  
 TGTTAATTTTAAATGACAATGCTATTGAGAGTCTTCTCCAAACATCTTCCGATTTGTTCTTTAACCCA  
 TCTAGATCTTCGTGGAATCAATTACAACATTGCCTTATGTTGGTTTTCTCGAACATTGGCCGAATA  
 TTGGATCTTCAGTTGGAGGACAACAATGGGCCTGCAATTGTGACTTATTGCAGTAAAAACTTGGTTGG  
 AGAACATGCCTCCACAGTCTATAATTGGTGATGTTGTCTGCAACAGCCCTCCATTTTTTAAAGGAAGTAT  
 ACTCAGTAGACTAAAGAAGGAATCTATTTGCCCTACTCCACCAGTGTATGAAGAATGAGGATCCTTCA  
 GGATCATTACATCTGGCAGCAACATCTTCAATAAATGATAGTCGCATGTCAACTAAGACCAGTCCATTC  
 TAAAACCTACCCACCAAGCACCAGGTTTGATACCTTATATTACAAAGCCATCCACTCAACTTCCAGGACC  
 TTAGTGCCTATCTCTTGAAGTCAAGTCTATCCCCATCAGGACTTCTAATACATTGTCAGGAGCGC  
 AACATTGAAAGCTTATCAGATCTGAGACCTCCTCCGAAAACTTAGAAAAGCTCATTCTAGCGGGAATA  
 TTATTACAGATTTAATGAAGTCTGATCTAGTGGAAATTTCACTTTGGAATGCTTCACTTGGAAAACA  
 TCGTATTGAAGTTCTTGAAGAAGGATCGTTTATGAACCTAACGAGATTACAAAACTCTATCTAAATGGT  
 AACCCACTGACCAAAATTAAGTAAAGGCATGTTCTTGGTCTCCATAATCTTGAATACTTATATCTTGAAT  
 ACAATGCCATTAAGGAAATACTGCCAGGAACCTTAAATCCAATGCCTAAACTTAAAGTCTGTATTTAAA  
 TAACAACCTCCTCAAGTTTTACCACCACATATTTTTTCAGGGGTTCTCTAACTAAGGTAATCTTAAA  
 ACAAACAGTTTACCATCTACCTGTAAGTAATTTTTGGATGATCTTGATTTACTAACCAGATTGACC  
 TTGAGGATAACCCCTGGGACTGCTCTGTGACCTGGTTGGACTGCAGCAATGGATACAAAAGTTAAGCAA  
 GAACACAGTGACAGATGACATCCTCTGCACTTCCCCGGGCATCTCGACAAAAAGGAATTGAAAGCCCTA  
 AATAGTGAATTTCTGTCCAGTTTGTAAATAACCCATCCATGCCAACACAGACTAGTTACCTTATGG  
 TCACCCTCCTGCAACAACAACAATACGGCTGATACTATTTACGATCTTACGGACGCTGTGCCACT  
 GTCTGTTCTAATATTGGGACTTCTGATTATGTTCACTACTATTGTTTTCTGTGCTGCAGGGATAGTGGTT  
 CTTGTTCTTACCAGGAGAAGATACAAAAGAAACAAGTAGATGAGCAATGAGAGACAACAGTCCCTG  
 TGCATCTTCAGTACAGCATGTATGGCCATAAAACCACTCATCACACTACTGAAAGACCCTCTGCCTCACT  
 CTATGAACAGCAGATGGTGAAGCCCATGGTTTATGTCTATAGAAGTCCATCCTTTGGTCCAAAGCATCTG  
 GAAGAGGAAGAAGAGAGGAATGAGAAAGAAGGAAGTGTGCAAAACATCTCCAAAGAAGTCTTTTGGAAC  
 AGGAAAATCATTACCACTCACAGGTCAAATATGAAATACAAAACCAACCAATCAACAGAATTTTT  
 ATCCTTCCAAGATGCCAGCTCATTGTACAGAAACATTTTAGAAAAAGAAAGGAACTTCAAGCAACTGGGA  
 ATCACAGAATACCTAAGGAAAAACATTGCTCAGCTCCAGCCTGATATGGAGGCACATTATCTGGAGCCC  
 ACGAAGAGCTGAAGTTAATGAAACATTAATGTACTCACGTCCAAGGAAGGTATTAGTGGAAACAGACAAA  
 AAATGAGTATTTGAACTTAAAGCTAATTTACATGCTGAACCTGACTATTTAGAAGTCTGGAGCAGCAA  
 ACA

**ACGCGT**ACGCGGCCGCTCGAGCAGAAACTCATCTCAGAAGAGGATCTGGCAGCAATGATATCCTGGATT  
 ACAAGGATGACGACGATAAGGTTTAA

**Protein Sequence:** >RC223564 representing NM\_032229  
 Red=Cloning site Green=Tags(s)

MKLWIHLFYSSLLACISLHSQTPVLSSRGSCDSLNCNEEKDGTMLINCEAKGIKVMSEISVPPSRPFQLS  
 LLNNGLTMLHTNDFSGLTNAISIHILGFNNIADIEIGAFNGLGLLKQLHINHNSLEILKEDTFHGLNLEF  
 LQADNNFITVIEPSAFSKLNRLKVLILNDNAIESLPPNIFRFVPLTHLDLRGNQLQTLPYVGFLEHIGRI  
 LDLQLEDNKWACNCDLLQLKTWLENMPPQSIIGDVVNCSPFFFKGSILSRLKKEICPTPPVYEEHEDPS  
 GSLHLAATSSINDSRMSTKTTSIKLPKAPGLIPYITKPSQTLPGPYCPIPCNCKVLSPSGLLIHCQER  
 NIESLSDLRPPPQNPRLILAGNIIHSLMKSDLVEYFTLEMLHLGNNRIEVL EEGSFMNLTRLQKLYLNG  
 NHLTKLSKGMFLGLHNLELYLEYNAIKEILPGTFNPMPLKVL YLNNLLQVLPPIHFSVPLTKVNLK  
 TNQFTHLPVSNILDDLDTQIDLEDNPWDCSDLVGLQWQIQLSKNTVTDDILCTSPGHLDKKELKAL  
 NSEILCPGLVNNPSMPTQTSYLMVTTTPTTTNTADTILRSLTDAVPLSVLILGLLIMFITIVFCAAGIVV  
 LVLHRRRRYKKKQVDEQMRDNSPVHLQYSMYGHKTTHTTTERPSASLYEQHMVSPMVHVYRSPSFGPKHL  
 EEEEEERNEKEGSDAKHLQRSLEQENHSPLTGSNMKYKTTNQSTEFLSFQDASSLYRNILEKERELQQLG  
 ITEYLRKNIAQLQPDMEAHYPGAHEELKLMETLMYSRPRKVLVEQTKNEYFELKANLHAEPDYLEVL EQQ  
 T

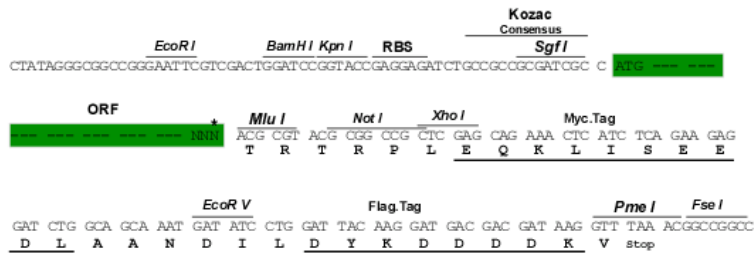
TRTRPLEQKLISEEDLAANDILDYKDDDDKV

**Chromatograms:** [https://cdn.origene.com/chromatograms/mk6162\\_h06.zip](https://cdn.origene.com/chromatograms/mk6162_h06.zip)

**Restriction Sites:** SgfI-MluI

**Cloning Scheme:**

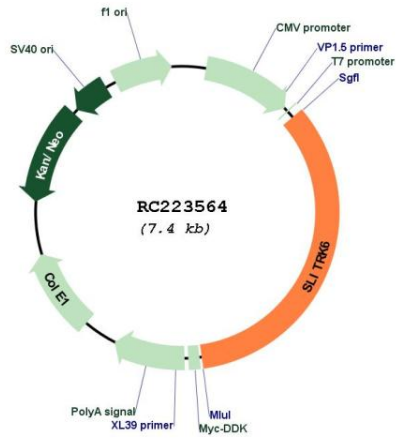
Cloning sites used for ORF Shuttling:



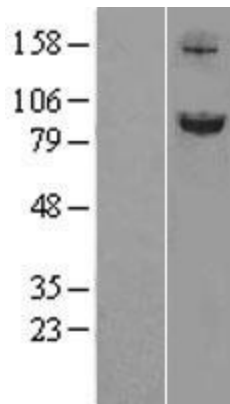
\* The last codon before the Stop codon of the ORF

<b>ACCN:</b>	NM_032229
<b>ORF Size:</b>	2523 bp
<b>OTI Disclaimer:</b>	The molecular sequence of this clone aligns with the gene accession number as a point of reference only. However, individual transcript sequences of the same gene can differ through naturally occurring variations (e.g. polymorphisms), each with its own valid existence. This clone is substantially in agreement with the reference, but a complete review of all prevailing variants is recommended prior to use. <a href="#">More info</a>
<b>OTI Annotation:</b>	This clone was engineered to express the complete ORF with an expression tag. Expression varies depending on the nature of the gene.
<b>Components:</b>	The ORF clone is ion-exchange column purified and shipped in a 2D barcoded Matrix tube containing 10ug of transfection-ready, dried plasmid DNA (reconstitute with 100 ul of water).
<b>Reconstitution Method:</b>	<ol style="list-style-type: none"><li>1. Centrifuge at 5,000xg for 5min.</li><li>2. Carefully open the tube and add 100ul of sterile water to dissolve the DNA.</li><li>3. Close the tube and incubate for 10 minutes at room temperature.</li><li>4. Briefly vortex the tube and then do a quick spin (less than 5000xg) to concentrate the liquid at the bottom.</li><li>5. Store the suspended plasmid at -20°C. The DNA is stable for at least one year from date of shipping when stored at -20°C.</li></ol>
<b>RefSeq:</b>	<a href="#">NM_032229.2</a> , <a href="#">NP_115605.2</a>
<b>RefSeq Size:</b>	4199 bp
<b>RefSeq ORF:</b>	2526 bp
<b>Locus ID:</b>	84189
<b>UniProt ID:</b>	<a href="#">Q9H5Y7</a>
<b>Cytogenetics:</b>	13q31.1
<b>Domains:</b>	LRRCT, LRR, LRR_TYP, LRR_PS
<b>Protein Families:</b>	Druggable Genome, Transmembrane
<b>MW:</b>	94.9 kDa
<b>Gene Summary:</b>	This gene encodes a member of the SLITRK protein family. Members of this family are integral membrane proteins that are characterized by two N-terminal leucine-rich repeat (LRR) domains and a C-terminal region that shares homology with trk neurotrophin receptors. This protein functions as a regulator of neurite outgrowth required for normal hearing and vision. Mutations in this gene are a cause of myopia and deafness. [provided by RefSeq, Dec 2014]

Product images:



Circular map for RC223564



Western blot validation of overexpression lysate (Cat# [LY403151]) using anti-DDK antibody (Cat# [TA50011-100]). Left: Cell lysates from untransfected HEK293T cells; Right: Cell lysates from HEK293T cells transfected with RC223564 using transfection reagent MegaTran 2.0 (Cat# [TT210002]).