

## Product datasheet for **RC223557**

### **MS4A4A (NM\_024021) Human Tagged ORF Clone**

#### Product data:

**Product Type:** Expression Plasmids  
**Product Name:** MS4A4A (NM\_024021) Human Tagged ORF Clone  
**Tag:** Myc-DDK  
**Symbol:** MS4A4A  
**Synonyms:** 4SPAN1; CD20-L1; CD20L1; HDCME31P; MS4A4; MS4A7  
**Mammalian Cell Selection:** Neomycin  
**Vector:** pCMV6-Entry (PS100001)  
**E. coli Selection:** Kanamycin (25 ug/mL)  
**ORF Nucleotide Sequence:** >RC223557 representing NM\_024021  
**Red=Cloning site Blue=ORF Green=Tags(s)**

TTTTGTAATACGACTCACTATAGGGCGGCCGGAATTCGTCGACTGGATCCGGTACCGAGGAGATCTGCC  
GCC**CGATCGCC**

ATGACAACCATGCAAGGAATGGAACAGGCCATGCCAGGGGCTGGCCCTGGTGTGCCCCAGCTGGGAAACA  
TGGCTGTCATACATTCACATCTGTGAAAGGATTGCAAGAGAAGTTCTTGAAGGGAGAACCCAAAGTCCT  
TGGGGTTGTGCAGATTCTGACTGCCCTGATGAGCCTTAGCATGGGAATAACAATGATGTGTATGGCATCT  
AATACTTATGGAAGTAACCCTATTTCCGTGTATATCGGGTACACAATTTGGGGTTCAGTAATGTTTATTA  
TTTCAGGATCCTTGCAATTGCAGCAGGAATTAGAACTACAAAAGCCTGGTCCGAGGTAGTCTAGGAAT  
GAATATCACCAGCTCTGTACTGGCTGCATCAGGGATCTTAATCAACACATTTAGCTTGGCGTTTTATTCA  
TTCCATCACCCCTTACTGTAACACTATGGCAACTCAAATAATTGTCATGGGACTATGTCCATCTTAATGG  
GTCTGGATGGCATGGTGCTCCTCTTAAGTGTGCTGGAATTCTGCATTGCTGTGTCCTCTCTGCCTTTGG  
ATGTAAGTGCTCTGTTGTACCCCTGGTGGGTTGTGTTAATTCTGCCATCACATTTCCATGCGAGAA  
ACAGCATCTCCACACCACTTAATGAGGTT

**ACGCGT**ACGCGGCCGCTCGAGCAGAACTCATCTCAGAAGAGGATCTGGCAGCAAATGATATCCTGGATT  
ACAAGGATGACGACGATAAGGTTTAA



[View online »](#)

**Protein Sequence:** >RC223557 representing NM\_024021  
Red=Cloning site Green=Tags(s)

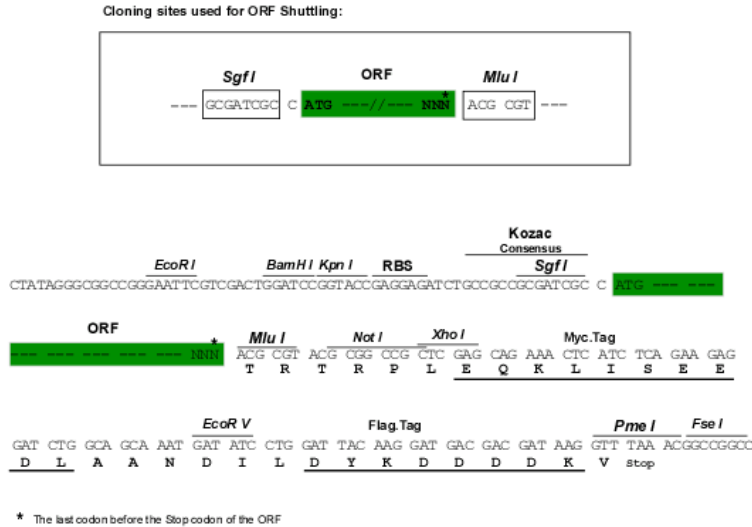
MTTMQGM EQAMPGAGPGVPQLGNMAVIHSHLWKGLQEKFLKGEPKVLGVVQILTALMSLSMGITMCMAS  
 NTYGSNPISVYIGYTIWGSVMFIISGSLIAAGIRTTKGLVRGSLGMNITSSVLAASGILINTFSLAFYS  
 FHHPYCNYYGNSNNCHGTMSILMGLDGMVLLLSVLEFCIAVLSAFGCKVLCCTPGGVVILPSHSHMAE  
 TASPTPLNEV

TRTRPLEQKLISEEDLAANDILDYKDDDDKV

**Chromatograms:** [https://cdn.origene.com/chromatograms/mk6108\\_h01.zip](https://cdn.origene.com/chromatograms/mk6108_h01.zip)

**Restriction Sites:** SgfI-MluI

**Cloning Scheme:**



**ACCN:** NM\_024021

**ORF Size:** 660 bp

**OTI Disclaimer:** The molecular sequence of this clone aligns with the gene accession number as a point of reference only. However, individual transcript sequences of the same gene can differ through naturally occurring variations (e.g. polymorphisms), each with its own valid existence. This clone is substantially in agreement with the reference, but a complete review of all prevailing variants is recommended prior to use. [More info](#)

**OTI Annotation:** This clone was engineered to express the complete ORF with an expression tag. Expression varies depending on the nature of the gene.

**Components:** The ORF clone is ion-exchange column purified and shipped in a 2D barcoded Matrix tube containing 10ug of transfection-ready, dried plasmid DNA (reconstitute with 100 ul of water).

**Reconstitution Method:**

1. Centrifuge at 5,000xg for 5min.
2. Carefully open the tube and add 100ul of sterile water to dissolve the DNA.
3. Close the tube and incubate for 10 minutes at room temperature.
4. Briefly vortex the tube and then do a quick spin (less than 5000xg) to concentrate the liquid at the bottom.
5. Store the suspended plasmid at -20°C. The DNA is stable for at least one year from date of shipping when stored at -20°C.

**RefSeq:** [NM\\_024021.3](#)

**RefSeq Size:** 1619 bp

**RefSeq ORF:** 663 bp

**Locus ID:** 51338

**UniProt ID:** [Q96IQ5](#)

**Cytogenetics:** 11q12.2

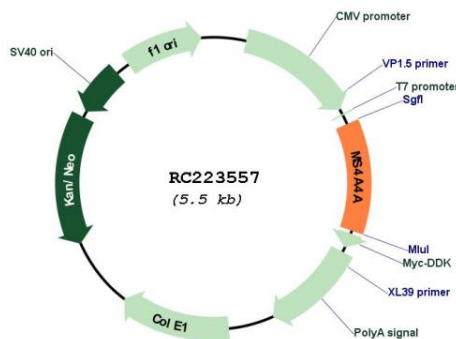
**Domains:** CD20

**Protein Families:** Druggable Genome, Transmembrane

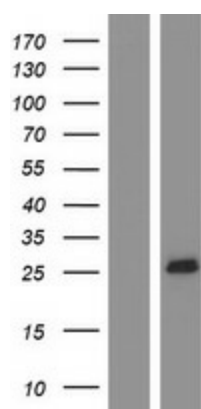
**MW:** 23 kDa

**Gene Summary:** This gene encodes a member of the membrane-spanning 4A gene family. Members of this nascent protein family are characterized by common structural features, similar intron/exon splice boundaries, and display unique expression patterns in hematopoietic cells and nonlymphoid tissues. Alternatively spliced transcript variants encoding different isoforms have been found for this gene. [provided by RefSeq, Aug 2011]

### Product images:



Circular map for RC223557



Western blot validation of overexpression lysate (Cat# [LY402965]) using anti-DDK antibody (Cat# [TA50011-100]). Left: Cell lysates from untransfected HEK293T cells; Right: Cell lysates from HEK293T cells transfected with RC223557 using transfection reagent MegaTran 2.0 (Cat# [TT210002]).