

Product datasheet for **RC223555**

IRF7 (NM_004031) Human Tagged ORF Clone

Product data:

Product Type:	Expression Plasmids
Product Name:	IRF7 (NM_004031) Human Tagged ORF Clone
Tag:	Myc-DDK
Symbol:	IRF7
Synonyms:	IMD39; IRF-7; IRF-7H; IRF7A; IRF7B; IRF7C; IRF7H
Mammalian Cell Selection:	Neomycin
Vector:	pCMV6-Entry (PS100001)
E. coli Selection:	Kanamycin (25 ug/mL)



[View online »](#)

ORF Nucleotide Sequence:

>RC223555 representing NM_004031
 Red=Cloning site Blue=ORF Green=Tags(s)

TTTTGTAATACGACTCACTATAGGGCGGCCGGGAATTCGTCGACTGGATCCGGTACCGAGGAGATCTGCC
 GCC**CGGATCGCC**

ATGCCAGTCCCGAGCGCCCTGCAGCCGCCCTGACTCTCCGCGCCGGGACCCGAGGGCAGCCAC
 GCGTGTCTTCGAGAGTGGCTCCTTGAGAGATCAGCAGCGGCTGCTATGAGGGCTGCACTGGCTGGA
 CGAGGCCCGCACCTGTTTCCGCGTGCCTTGAAGCACTTCGCGCGCAAGGACCTGAGCGAGGCCGACGCG
 CGCATCTTCAAGGCTGGGCTGTGGCCCGGGCAGGTGGCCGCCTAGCAGCAGGGGAGGTGGCCGCCCC
 CCGAGGCTGAGACTGCGGAGCGCGCGGCTGGAAAACCAACTTCCGCTGCGCACTGCGCAGCACGCTGCG
 CTTCTGTGTGCGAGATAACTCGGGGACCCGGCCGACCCGACAAGGTGTACGCGCTCAGCCGGGAG
 CTGTGTGGCGAGAAGGCCAGGCACGGACCAGACTGAGGCAGAGGCCCGCAGCTGTCCACCACCAC
 AGGGTGGGCCCCAGGGCCATTCTGGCACACACATGCTGGACTCAAAGCCCCAGGCCCTCCCTGC
 CCCAGCTGGTGCAGAGGGGACCTCCTGCTCCAGCAGTCAACAGAGCTGCCTGGCAGACCATCTGCTG
 ACAGCGTCATGGGGGACAGATCCAGTCCAACCAAGGCTCCTGGAGAGGGACAAGAAGGGCTTCCCTGA
 CTGGGGCTGTGCTGGAGGCCAGGGCTCCCTGCTGGGGAGCTGTACGGGTGGGCACTAGAGACGACCC
 CAGCCCCGGGCCCCAGCCCGCGCACTAACGACAGGCGAGGCCGCGGCCCCAGAGTCCCCGACCCAGGCA
 GAGCCGTACCTGTACCCTCCCCAAGCGCTGCACCGCGTGAAGAGCCAGCCAGGGGCGCTGGACG
 TGACCATCATGTACAAGGGCCGACGGTGTGCAGAAGGTGGTGGGACACCCGAGCTGCACGTTCTATA
 CGGCCCCCAGACCCAGCTGTCCGGGCCACAGACCCAGCAGGTAGCATTCCCCAGCCCTGCCGAGTCC
 CCGACCAAGCAGCTGCGCTACACGGAGGAAGTGTGCGGCACGTGGCCCTGGGTTGCACCTGGAGC
 TTCCGGGGCCACAGCTGTGGGCCCGGCATGGCAAGTGAAGGTGTACTGGAGGTGGGCGGCCCCCC
 AGGCTCCGCCAGCCCTCCACCCAGCCTGCCTGCTGCCTCGGAAGTGTGACACCCCATCTTCGACTTC
 AGAGTCTTCTCCGAGAGCTGGTGAATTCCGGGCACGGCAGCGCCGTGGCTCCCCACGCTATACCATCT
 ACCTGGGCTTCGGGCAGGACCTGTGAGCTGGGAGGCCAAGGAGAAGAGCCTGGTCTGTGTAAGCTGGA
 ACCCTGGCTGTGCCGAGTGCACCTAGAGGGCACGACGCTGAGGGTGTGCTTCCCTGGATAGCAGCAGC
 CTCAGCCTCTGCCTGTCCAGCGCAACAGCCTCTATGACGACATCGAGTCTTCTTATGGAGCTGGAGC
 AGCCCCGC

AG**CGGACCG**ACGCGTACGCGCCGCTCGAGCAGAACTCATCTCAGAAGAGGATCTGGCAGCAAATGATATCC
 TGGATTACAAGGATGACGACGATAAGGTTTAA

Protein Sequence:

>RC223555 representing NM_004031
 Red=Cloning site Green=Tags(s)

MPVPERPAAGPDSRPGTRRAAPRVLFGEWLLGEISSGCEYGLQWLDEARTCFRVPWKHFARKDLSEADA
 RIFKAWAVARGRWPPSSRGGPPPEAETAERAGWKTNFRCALRSTRRFVMLRDNSGDPADPHKVYALSRE
 LCWREGPGTDQTEAEAPAAVPPQGGPPGFLAHTHAGLQAPGPLPAPAGDEGDLQLQAVQQSCLADHLL
 TASWGADPVPTKAPGEGQEGLPLTGACAGGPGLPAGELYGWAVETTPSPGPQPAALTTGAAAPEPSPHQ
 EPYLSPPSACTAVQEPSPGALDVTIMYKGRVTLQKVVGHPSCTFLYGPDPAVRATDPQVAFPSPAEL
 PDQQLRYTEELLRHVAPGLHLELRGPQLWARRMGKCKVYWEVGGPPGSASPSTPACLLPRNCDTPIFD
 RVFFRELVEFRARQRGSPRYTIYLFQGDLSAGRPKEKSLVLVKLEPWLCRVHLEGTQREGVSSLDSS
 LSLCLSSANSLYDDIECFLEMELEQPA

SGPTRRRLEQKLI**SEEDLAANDILDYKDDDDKV**

Restriction Sites:

Sgfl-RsrII

Cloning Scheme:


ACCN: NM_004031

ORF Size: 1548 bp

OTI Disclaimer: The molecular sequence of this clone aligns with the gene accession number as a point of reference only. However, individual transcript sequences of the same gene can differ through naturally occurring variations (e.g. polymorphisms), each with its own valid existence. This clone is substantially in agreement with the reference, but a complete review of all prevailing variants is recommended prior to use. [More info](#)

OTI Annotation: This clone was engineered to express the complete ORF with an expression tag. Expression varies depending on the nature of the gene.

Components: The ORF clone is ion-exchange column purified and shipped in a 2D barcoded Matrix tube containing 10ug of transfection-ready, dried plasmid DNA (reconstitute with 100 ul of water).

Reconstitution Method:

1. Centrifuge at 5,000xg for 5min.
2. Carefully open the tube and add 100ul of sterile water to dissolve the DNA.
3. Close the tube and incubate for 10 minutes at room temperature.
4. Briefly vortex the tube and then do a quick spin (less than 5000xg) to concentrate the liquid at the bottom.
5. Store the suspended plasmid at -20°C. The DNA is stable for at least one year from date of shipping when stored at -20°C.

RefSeq: [NM_004031.1](#), [NP_004022.1](#)

RefSeq Size: 1940 bp

RefSeq ORF: 1551 bp

Locus ID: 3665

UniProt ID: [Q92985](#)

Cytogenetics: 11p15.5

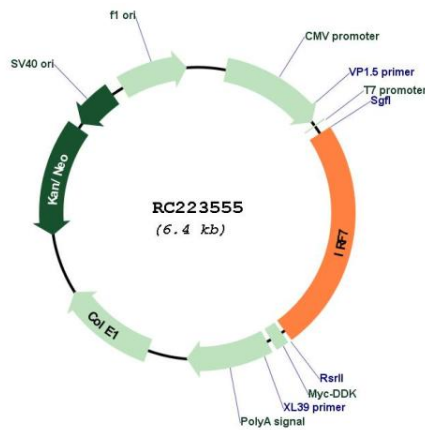
Protein Families: Transcription Factors

Protein Pathways: Cytosolic DNA-sensing pathway, RIG-I-like receptor signaling pathway, Toll-like receptor signaling pathway

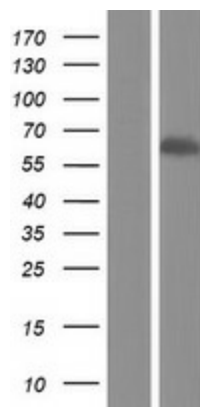
MW: 55.5 kDa

Gene Summary: IRF7 encodes interferon regulatory factor 7, a member of the interferon regulatory transcription factor (IRF) family. IRF7 has been shown to play a role in the transcriptional activation of virus-inducible cellular genes, including interferon beta chain genes. Inducible expression of IRF7 is largely restricted to lymphoid tissue. Multiple IRF7 transcript variants have been identified, although the functional consequences of these have not yet been established. [provided by RefSeq, Jul 2008]

Product images:



Circular map for RC223555



Western blot validation of overexpression lysate (Cat# [LY418288]) using anti-DDK antibody (Cat# [TA50011-100]). Left: Cell lysates from untransfected HEK293T cells; Right: Cell lysates from HEK293T cells transfected with RC223555 using transfection reagent MegaTran 2.0 (Cat# [TT210002]).