

Product datasheet for **RC223552**

GPR128 (ADGRG7) (NM_032787) Human Tagged ORF Clone

Product data:

Product Type:	Expression Plasmids
Product Name:	GPR128 (ADGRG7) (NM_032787) Human Tagged ORF Clone
Tag:	Myc-DDK
Symbol:	GPR128
Synonyms:	GPR128
Mammalian Cell Selection:	Neomycin
Vector:	pCMV6-Entry (PS100001)
E. coli Selection:	Kanamycin (25 ug/mL)



[View online »](#)

ORF Nucleotide Sequence:

>RC223552 representing NM_032787
 Red=Cloning site Blue=ORF Green=Tags(s)

TTTTGTAATACGACTCACTATAGGGCGGCCGGAATTCGTCGACTGGATCCGGTACCGAGGAGATCTGCC
 GCC**CGCATCGCC**

ATGGCTTCTGCCGTGCCTGGAACCTTAGGGTGTGGTGTGCTGTGCTGTGGACTACTGACTGGCATCA
 TTTTGGGACTGGGCATCTGGAGGATTGTGATCAGGATCCAAAGAGGAAAACTACTTCTCATCAAGCAC
 CCCTACAGAGTTCTGCAGGAATGGTGGAACTGGGAAAAATGGCAGATGTATTTGTACAGAAGAGTGGAAA
 GGACTGAGATGTACAATTGCTAATTTTTGTGAAAAAGTACCTATATGGGTTTTACTTTTCCAGAAATCC
 CAGTGGGCAGATATGGACCATCCTTGCAAAATGTGGCAAGGATACTCCAAGTGGCGGCAATCCAATGGC
 AGTCCGGTTGTGCAGTCTCTCTATATGGAGAGATAGAATTACAAAAAGTGACAATAGGAAATTGCAAT
 GAAAACTGGAAACCCTGGAAAAGCAGGTAAGGATGTCACAGCACCCTTAATAACATTTCTTCTGAAG
 TCCAGATTTTAACTCTGATGCCAATAAATTAAGTCTGAGAATCACTAGTGTACCGGAGTGGTTGG
 ACAGATGTTTCGACACTTCCAGAAATGCTTCACCTGAGGCAAAGAAAGTTGCCATAGTAACAGTGAAGTCAA
 CTCTAGATGCCAGTGAAGATGCTTTTCAAAGAGTTGCTGCTACTGCTAATGATGATGCCCTTACAACGC
 TTATTGAGCAAAATGGAGACTTATTCCTTGTCTTTGGGTAAATCAATCAGTGGTGGAACTAACATAGCAAT
 ACAGTCAGCAAAATTTCTTTCAGAAAAATGCGGTGGGGCCTTCAAATGTTGCTTCTCTGTGCAGAAAAGGA
 GCTAGCAGTTCTCTAGTTTCTAGTTCAACATTTATACATACAAATGTGGATGGCCTTAACCCAGATGCAC
 AGACTGAGCTTCAGGTCTTGCTAATATGACGAAAAATACACCAAGACATGCGGCTTTGTAGTTTATCA
 AAATGACAAGCTTTTCCAATCAAAAATTTTACAGCTAAATCGGATTTTGTAGTCAAAAAATATCTCAAGC
 AAAACTGATGAAAATGAGCAAGATCAGAGTCTTCTGTTGACATGGTCTTTAGTCCAAAGTACAACCAAA
 AAGAATTTCAACTCTATTCTATGCCTGTGTCTATTGGAATTTGTCAGCGAAGGACTGGGACACATATGG
 CTGTCAAAAAGACAAGGCACTGATGGATTCTGCGCTGCCGCTGCAACCACTACTAATTTTGTCTGTA
 TTAATGACTTTCAAAAAGGATTATCAATATCCCAAATCACTTGACATATTATCCAACGTTGGATGTGCAC
 TGTCTGTACTGGTCTGGCTCTCACAGTTATATTTAGATTGTCACCAGGAAAAGTCAAAAAACCTCAGT
 AACCTGGGTTTTGGTCAATCTGTGCATATCAATGTTGATTTTCAACCTCCTTTTGTGTTTGAATTGAA
 AACTCCAATAAGAAGTTCAGACAAGTATGGTGCATCAATAATATTGACTTTGACAATAATGACATAC
 CCAGGACAGACACCATTAACATCCGAATCCCATGTGCACTGCGATTGCCGCCTTACTGCACTATTTTCT
 GTTAGTGACATTTACCTGGAACGCACTCAGCGCTGCACAGCCCTATTACCTTCTAATAAGGACCATGAAG
 CCTCTTCTCGGCATTTCAATTTTTCATCTCATTAAATGGATGGGGAGTCCCAGCTATAGTAGTGGCTA
 TAACAGTGGGAGTTATTTATTCTCAGAATGGAAATAATCCACAGTGGGAATTAGACTACCGCAAGAGAA
 AATCTGCTGGCTGGCAATTCAGAACCCATGGTGTATAAAAAGTCCGCTGTTGTGGTCAATTCATCGTA
 CCTGTAACCATTATCCTCATCAGCAATGTTGTTATGTTTATTACAATCTCGATCAAAGTGTGTGGGAAGA
 ATAACCAGAACCTGACAAGCACAAAAAAGTTTCAATCCATGAAGAAGATTGTTAGCACATATCTGTTGC
 AGTTGTTTTTGAATTACCTGGATTCTAGCATACCTGATGCTAGTTAATGATGATAGCATCAGGATCGTC
 TTCAGCTACATATTCTGCCTTTTCAACGCTACACAGGGATTGCAAATTTTATCCTGTACTGTTAGAA
 CAAAAGTCTTCCAGAGTGAAGCTTCAAAGTGTGATGTTGCTATCGTCTATTGGGAGAAGGAAGTCACT
 GCCTTCAGTGACGCGCCGAGGCTGCGTGTAAAGATGTATAATTCCTCAGGTCATTGCCAACCTTACAT
 GAACGCTTTAGGCTACTGGAAACCTCTCCGAGTACTGAGGAAATCACACTCTCTGAAAGTGACAATGCAA
 AGGAAAGCATC

ACGCGTACGCGCGCGCTCGAGCAGAACTCATCTCAGAAGAGGATCTGGCAGCAATGATATCCTGGATT
 ACAAGGATGACGACGATAAGGTTTAA

Protein Sequence: >RC223552 representing NM_032787
Red=Cloning site Green=Tags(s)

MASCRAWNLRLVAVVCGLLTGIIILGLGIWRIVIRIQRGKSTSSSSTPTEFCRNGGTWENGRICTEEWK
GLRCTIANFCENSTYMGFTFARIPVGRYGPSLQTCGKDTPSAGNPMVRLCSLSLYGEIELQKVTIGNCN
ENLETLEKQVKDVTAPLNNISSEVQILSDANKLTAENITSATRVVGMFDTSRNASPEAKKVAIVTVSQ
LLDASEDAFQRVAATANDDALTTLIEQMETSLSLGNQSVVEPNIAIQSANFSSENAVGPSNVRFSVQKG
ASSSLVSSSTFIHTNVDGLNPDAQTELQVLLNMTKNYTKCGFVVYQNDKLFQSKTFTAKSDFSQKIISS
KTDENEQDQSASVDMVFSPKYNQKEFQLYSYACVYWNLSAKDWDYGCQKDKGTDGFLRCRCNHTTNFAV
LMTFKKDYQYPKSLDILSNVGCALSVTGLALTVIFQIVTRKVRKTSVTWVLVNLCISMLIFNLLFVFGIE
NSNKNLQTSDDGINNIDFDNNDIPRTDTINIPNPMCTAIAALLHYFLLVTFWNALSAAPYYLLIRTMK
PLPRHFILFISLIGWVPAIVVAITVGVISQNGNPNQWELDYRQEKICWLAIPEPNGVIKSPLLWSFIV
PVTIILISNVVMFITISIKVLWKNQNL TSTKKVSSMKKIVSTLSVAVVFGITWILAYLMLVNDDSIRIV
FSYIFCLFNATQGLQIFILYTVRTKVFQSEASKVLMMLSSIGRRKSLPSVTRPRLRVKMYNFLRSLPTLH
ERFRLLLETSPSTEEITLSESDNAKESI

TRTRPLEQKLI SEEDLAANDILDYKDDDDKV

Chromatograms: https://cdn.origene.com/chromatograms/mk6170_h05.zip

Restriction Sites: Sgfl-Mlul

Cloning Scheme:



ACCN: NM_032787

ORF Size: 2391 bp

OTI Disclaimer: The molecular sequence of this clone aligns with the gene accession number as a point of reference only. However, individual transcript sequences of the same gene can differ through naturally occurring variations (e.g. polymorphisms), each with its own valid existence. This clone is substantially in agreement with the reference, but a complete review of all prevailing variants is recommended prior to use. [More info](#)

OTI Annotation: This clone was engineered to express the complete ORF with an expression tag. Expression varies depending on the nature of the gene.

Components: The ORF clone is ion-exchange column purified and shipped in a 2D barcoded Matrix tube containing 10ug of transfection-ready, dried plasmid DNA (reconstitute with 100 ul of water).

Reconstitution Method:

1. Centrifuge at 5,000xg for 5min.
2. Carefully open the tube and add 100ul of sterile water to dissolve the DNA.
3. Close the tube and incubate for 10 minutes at room temperature.
4. Briefly vortex the tube and then do a quick spin (less than 5000xg) to concentrate the liquid at the bottom.
5. Store the suspended plasmid at -20°C. The DNA is stable for at least one year from date of shipping when stored at -20°C.

RefSeq: [NM_032787.3](#)

RefSeq Size: 3070 bp

RefSeq ORF: 2394 bp

Locus ID: 84873

UniProt ID: [Q96K78](#)

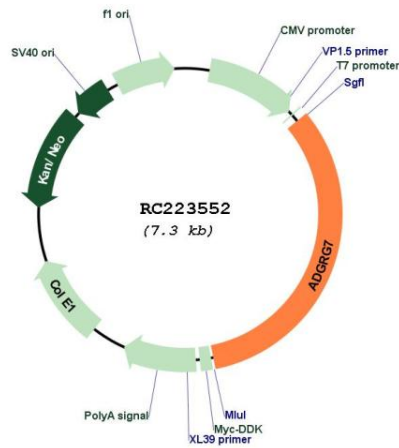
Cytogenetics: 3q12.2

Protein Families: Druggable Genome, GPCR, Transmembrane

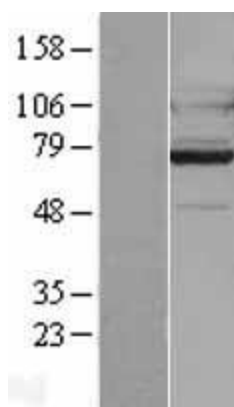
MW: 88.7 kDa

Gene Summary: Orphan receptor.[UniProtKB/Swiss-Prot Function]

Product images:



Circular map for RC223552



Western blot validation of overexpression lysate (Cat# [LY403202]) using anti-DDK antibody (Cat# [TA50011-100]). Left: Cell lysates from untransfected HEK293T cells; Right: Cell lysates from HEK293T cells transfected with RC223552 using transfection reagent MegaTran 2.0 (Cat# [TT210002]).