

Product datasheet for **RC223538**

LYPD3 (NM_014400) Human Tagged ORF Clone

Product data:

Product Type:	Expression Plasmids
Product Name:	LYPD3 (NM_014400) Human Tagged ORF Clone
Tag:	Myc-DDK
Symbol:	LYPD3
Synonyms:	C4.4A
Mammalian Cell Selection:	Neomycin
Vector:	pCMV6-Entry (PS100001)
E. coli Selection:	Kanamycin (25 ug/mL)
ORF Nucleotide Sequence:	>RC223538 ORF sequence Red=Cloning site Blue=ORF Green=Tags(s)

TTTTGTAATACGACTCACTATAGGGCGGCCGGGAATTCGTCGACTGGATCCGGTACCGAGGAGATCTGCCGCC**GCGATCGCC**

ATGGACCCGCCAGGAAAGCAGGTGCCAGGCCATGATCTGGACTGCAGGCTGGCTGCTGCTGCTGCTGCTGCTTTCGCGGAGGAGCGCAGGCCCTGGAGTGTACAGCTGCGTGCAGAAAGCAGATGACGGATGCTCCCCGAA
CAAGATGAAGACAGTGAAGTGCAGCAGGGCGTGAGCGTCTGCACCGAGGCGTGGGGCGGTGGAGACC
ATCCACGGACAATTCGCTGGCAGTGCAGCGTTCGGGTTCGGACTCCCCGCAAGAATGACCGCGGCC
TGGATCTTCACGGCTTCTGGCTTCATCCAGCTGCAGCAATGCGCTCAGGATCGCTGCAACGCCAAGCT
CAACTCACTCGCGGGCGCTCGACCCGCGAGGTAATGAGAGTGCATACCGCCCAACGGCGTGGAGTGC
TACAGCTGTGTGGCCTGAGCCGGAGGCGTGCCAGGGTACATCGCCGCCGGTTCGTGAGCTGCTACAACG
CCAGCGATCATGTCTACAAGGGCTGCTTTCGACGGCAACGTCACCTTACGGCAGCTAATGTGACTGTGTC
CTTGCTGTCCGGGCTGTGCCAGGATGAATTCTGCACTCGGGATGGAGTAACAGGCCCAAGGGTTCAGC
CTCAGTGGCTCCTGTGGCAGGGTCCCCTGTAACCTGACCTCCGCAACAAGACCTACTTCTCCCCTC
GAATCCCACCCCTGTCCGGCTGCCCCCTCCAGAGCCCAGACTGTGGCCTCAACCACATCTGTACCAC
TTCTACCTCGGCCAGTGAACACGAGGCCTCCCGGATGAGGAGCCCAGGTTGACTGGAGGCGCCGCTGGCCACC
AGACAGGAGTAGAACACGAGGCCTCCCGGATGAGGAGCCCAGGTTGACTGGAGGCGCCGCTGGCCACC
AGGACCGCAGCAATTTCAGGGCAGTATCCTGCAAAAGGGGGGCCAGCAGCCCCATAATAAGGCTGTGT
GGCTCCACAGCTGGATTGGCAGCCCTTCTGTTGCCGCTGGCTGCTGGTGTCTACTG

ACGCGTACGCGGCGCCTCGAGCAGAACTCATCTCAGAAGAGGATCTGGCAGCAAATGATATCCTGGATT
ACAAGGATGACGACGATAAGGTTTAA



[View online »](#)

Protein Sequence: >RC223538 protein sequence
Red=Cloning site Green=Tags(s)

MDPARKAGAQAMIWTAGWLLLLLLRGGQALECYSCVQKADDGCSFNKMTVKCAPGVDCVTEAVGAVET
 IHGQFSLAVRGCGLPGKNDRLDLHGLLAFIQLQCAQDRCAKLNLSRALDPAGNESAYPPNGVEC
 YSCVGLSREACQGTSPVVSVCYNASDHVYKGCDFGNVTLTAANVTVSLPVRGCVQDEFCTRDGVTGPGFT
 LSGSCCQGSRCNSDLRNKTYFSPRIPPLVRLPPPEPTTVASTTSVTTSTAPVRPTSTTKPMPAPTSQTP
 RQGVHEASRDEEPRLTGGAAGHQDRNSGQYPAKGGPQQPHNKGCVAPTAGLAALLLAVAAGVLL

TRTRPLEQKLISEEDLAANDILDYKDDDDKV

Chromatograms: https://cdn.origene.com/chromatograms/mk6453_c04.zip

Restriction Sites: SgfI-MluI

Cloning Scheme:

Cloning sites used for ORF Shuttling:



* The last codon before the Stop codon of the ORF

ACCN: NM_014400

ORF Size: 1038 bp

OTI Disclaimer: The molecular sequence of this clone aligns with the gene accession number as a point of reference only. However, individual transcript sequences of the same gene can differ through naturally occurring variations (e.g. polymorphisms), each with its own valid existence. This clone is substantially in agreement with the reference, but a complete review of all prevailing variants is recommended prior to use. [More info](#)

OTI Annotation: This clone was engineered to express the complete ORF with an expression tag. Expression varies depending on the nature of the gene.

Components: The ORF clone is ion-exchange column purified and shipped in a 2D barcoded Matrix tube containing 10ug of transfection-ready, dried plasmid DNA (reconstitute with 100 ul of water).

Reconstitution Method:

1. Centrifuge at 5,000xg for 5min.
2. Carefully open the tube and add 100ul of sterile water to dissolve the DNA.
3. Close the tube and incubate for 10 minutes at room temperature.
4. Briefly vortex the tube and then do a quick spin (less than 5000xg) to concentrate the liquid at the bottom.
5. Store the suspended plasmid at -20°C. The DNA is stable for at least one year from date of shipping when stored at -20°C.

RefSeq: [NM_014400.3](#)

RefSeq Size: 1745 bp

RefSeq ORF: 1041 bp

Locus ID: 27076

UniProt ID: [O95274](#)

Cytogenetics: 19q13.31

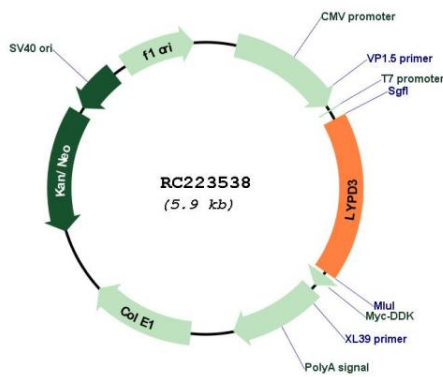
Domains: LU

Protein Families: Druggable Genome

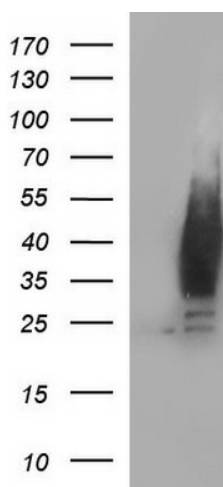
MW: 36 kDa

Gene Summary: Supports cell migration. May be involved in urothelial cell-matrix interactions. May be involved in tumor progression.[UniProtKB/Swiss-Prot Function]

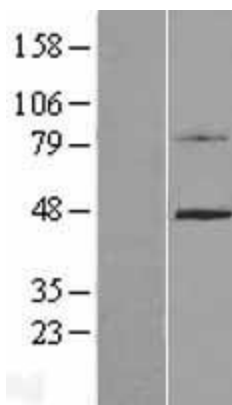
Product images:



Circular map for RC223538



HEK293T cells were transfected with the pCMV6-ENTRY control (Cat# [PS100001], Left lane) or pCMV6-ENTRY LYPD3 (Cat# RC223538, Right lane) cDNA for 48 hrs and lysed. Equivalent amounts of cell lysates (5 ug per lane) were separated by SDS-PAGE and immunoblotted with anti-LYPD3 (Cat# [TA590533]). Positive lysates [LY415295] (100ug) and [LC415295] (20ug) can be purchased separately from OriGene.



Western blot validation of overexpression lysate (Cat# [LY415295]) using anti-DDK antibody (Cat# [TA50011-100]). Left: Cell lysates from untransfected HEK293T cells; Right: Cell lysates from HEK293T cells transfected with RC223538 using transfection reagent MegaTran 2.0 (Cat# [TT210002]).