

Product datasheet for **RC223531**

JIP3 (MAPK8IP3) (NM_015133) Human Tagged ORF Clone

Product data:

Product Type:	Expression Plasmids
Product Name:	JIP3 (MAPK8IP3) (NM_015133) Human Tagged ORF Clone
Tag:	Myc-DDK
Symbol:	JIP3
Synonyms:	JIP-3; JIP3; JSAP1; NEDBA; syd; SYD2
Mammalian Cell Selection:	Neomycin
Vector:	pCMV6-Entry (PS100001)
E. coli Selection:	Kanamycin (25 ug/mL)
ORF Nucleotide Sequence:	>RC223531 representing NM_015133. Blue=ORF Red=Cloning site Green=Tag(s)

```
GCTCGTTTGTAGTGAACCGTCAGAATTTGTAAATACGACTCACTATAGGGCGGCCGGGAATTCGTGACTG
GATCCGGTACCGAGGAGATCTGCCGCCGCGATCGCC
ATGATGGAGATCCAGATGGACGAGGGCGGGCGCTGGTGGTGTACCAGGACGACTACTGCTCCGGCTCG
GTGATGTCGGAGCGGGTGTGGGCTGGCGGGCTCCATCTACCGCGAGTTCGAGCGCCTCATCCACTGC
TACGACGAGGAGGTGGTCAAGGAGCTCATGCCGCTGGTGGTGAACGTGCTGGAGAACCTAGACTCGGTG
CTCAGCGAGAACCAGGAGCAGGAGTGGAGCTGGAGCTGCTGCCGAGGACAACGAGCAGCTGCTCACC
CAGTACGAGCGTGAAGGCGCTGCGCAGGCGGAGGAGAAATTCATTGAGTTTGAAGATGCTCTG
GAACAAGAGAAGAAAGAGCTGCAATCCAGGTGGAGCACTACGAGTTCAGACCGCCAGCTGGAGCTG
AAGGCCAAGAAGTATGCCGATCAGATTTCCCGGTTGGAGGAGCGGGAGTCGGAGATGAAGAAGGAGTAC
AATGCCCTGCACCAGCGCACACAGAGATGATACAGACCTACGTGGAGCACATTGAGAGGTTCCAAGATG
CAGCAGGTCCGAGGAAACAGCCAGACCGAGAGCAGCTGCCGGGGCGGAGGAAGGAGCGCCACCTCC
CTGAACGTGTTCCCTGGCTGACGGCACGGTACGTGCACAGATCGGGGGCAAGCTCGTGCTGCCGGG
GACCACTGGCACCTGAGTGACCTCGGCCAGTGCAGTCCAGTCCAGTACCAGTGTCCACAGGATGAA
ATGTCCGAGTCAGGCCAGTCTCGGCCGGCCACACCCAGCACCACAGGACCAAGTCCAACACGCC
ACATCCTCCGTGCCCTCGGCCCGCTCACACCCCTCAACGAGAGCCTGCAGCCCCGGGGACTATGGC
GTGGGCTCCAAGAACAGCAAGCGTGCCTGGGAGAAAGCGGAGCCGCAACATGGAAGTACAGGTCACC
CAGGAGATGCGCAACGTGATATAGGCATGGACAGCAGTGCAGAGTGGTCTGATGTTCAAGACATTATT
GACTCCACGCCAGAGCTGGACATGTGTCCAGAGACCCGCTGGACCGCACAGGAAGCAGCCCAACCCAG
GGCATCGTGAACAAAGCTTTCGGCATCAACACCGACTCCCTGTACCATGAGCTGTGACGGCAGGGTCT
GAGGTCATCGGGATGTGGACGAAGGGCCGACCTCCTAGGGGAGTTCTCAGTGCAGATGATTTCTTT
GGAATGGGCAAAGAAGTGGGAACTGCTACTGGAACCACTCACAGCTTCTGGAACCAAAAACGCTTG
AATGTGGTGAAGAATGACCTGATTGCCAAGGTCGACAGCTGTCCGGGAGCAGGAGGTGCTGAGGGC
GAGTTGGAGGCTGCTAAGCAGGCCAAAGTCAAGCTGGAACCCGATCAAGGAGCTGGAAGAGGAACTG
AAAAGAGTGAAGTCCGAGCCATCATCGCCCGCTGAACCCAAAGAAGGCGGAGGATGTAAGCAGC
```



[View online »](#)

TATCTCTGTACAGAATCGGACAAAATCCCCATGGCCCAGCGCCGCCGCTTCACGCGGGTGGAGATGGCC
CGTGTGCTCATGGAGCGGAACCACTACAAGGAGCGGCTGATGGAGCTGCAGGAGGCTGTGCGGTGGACT
GAGATGATCAGAGCGTCCCGAGAGCACCCATCCGTCCAGGAGAAGAAGTCCGACCATCTGGCAGTTT
TTCAGCCGCTCTTCAGCTTCTCCTCCAGCCCCCTCCGGCCAAGCGCCCTATCCCTCGGTGAACATC
CACTACAAGTCAACCACCACTGCCGGCTTCAGCCAGCGCCGAACCATGCCATGTGCCGATCTCGGCA
GGCAGCCGGCCCTGGAATTTCTCCTGACGACGACTGCACGTCCTCCGCCGTCGAGAGCAGAAGCGC
GAGCAGTACCGCCAGGTGCGTGAGCACGTGCGTAACGACGACGGCCGCTGCAGGCTCGGGCTGGAGC
CTGCCCGCCAAGTACAAGCAGCTGAGTCCAACGGGGGCCAGGAGGACACGCGGATGAAGAACGTGCCG
GTGCCGGTGTACTGCCGCCCTCTGGTGGAGAAGGACCCACCATGAAGCTGTGGTGTGCCGCGGGCTC
AACCTGAGCGGGTGGAGGCCAATGAGGACGACGCTGGGAATGGAGTCAAGCCAGCGCCAGGCCGCGAT
CCCCTGACCTGCGACCGCAAGGAGACGGCGAGCCCAAGAGCGCCACACGTCTCCCGAGAAGAAGAAG
GCCAAGGAGCTCCCTGAAATGGACGCCACTCCAGCCGGGTGTGGATCCTGACCAGCACCTGACCACC
AGCAAGGTGGTATCATCGACGCCAACAGCCGGGCACGGTGGTGGACCAGTTACCCTGTCAACGCG
CACGTGCTGTGCATCTCCAGCATCCCCGCGCCAGCGACAGCGACTACCCTCCCGGGGAGATGTTCTG
GACAGCGACGTGAACCCAGAGGACCCGGGCGCAGATGGCGTGTGGCCGATACACCTGGTGGGCTGT
GCCACCCGCTGCAACGTGCCGCGGAGCAACTGCTCCTCCCGAGGGGACACCCAGTGCTAGACAAGGGG
CAGGGGGAGGTGGCCACCATCGCCAACGGGAAGGTCAACCCGTCACAGTCCACAGAGGAGGCCACAGAG
GCCACGGAGGTGCCAGACCCTGGGCCACGCGAGCCAGAGACAGCCACATTGCGGCCCGGGCTCTACA
GAGCAGTCTTACTGACCCAGCCCCGACCCCTCCTCTGGCCCCAGCCTGGCAGCGAGAACGGGCCA
GAGCCTGACAGCAGCAGCACAGGCCAGAGCCAGAGCCAGCGGGGACCCACGGGAGCAGGCAGCAGT
GCTGCACCCACCATGTGGCTGGGAGCCAGAACGGCTGGCTCTATGTGCACTCGGCTGTGGCCAAGTGG
AAGAAGTGCCTGCACTCCATCAAGCTGAAGGATCTGTGCTGAGCCTGGTGCATGTCAAAGGCCGTGTG
CTGGTGGCTCTGGCGGACGGGACCCTGGCCATCTCCACCGTGGTGAAGATGGCCAGTGGGATCTGAGC
AACTATCACCTAATGGACCTGGGCCACCCGACCACTCCATCCGCTGCATGGCTGTTGTGTACGACCGC
GTGTGGTGTGGTACAAGAACAAGGTGCACGTATCCAGCCCAAGACCATGCAGATAGAGAAGTCATTT
GACGCCACCCGCGGGGAGAGCCAGGTGCGGCAGCTGGCGTGGATCGCGATGGCGTATGGGTGTCC
ATCCGCTGGACTCCACCCTGAGGCTCTACCATGCACACACGCACCAGCATCTACAGGACGTGGACATT
GAGCCCTACGTCAGCAAGATGCTAGGCACTGGCAAGCTGGGTTTCTCCTTCGTACGCATCACGGCCCTG
CTTGTGCGGGCAGCCGGCTCTGGGTGGGCACCGGCAACGGAGTGGTATCTCCATCCCCCTGACAGAG
ACTGTGGTCTGCACCGAGGCCAGCTCCTGGGGCTCCGAGCCAATAAGACATCCCCACCTCTGGGGAG
GGCGCCCTCCCGGGGATCATCCACGTGTATGGCGATGACAGCAGTGACAGGGCGGCCAGCAGCTTC
ATCCCCTACTGCTCCATGGCCCAGGCCAGCTATGCTTCCATGGGCACCGCGATGCCGTGAAGTTCTTT
GTCTCGGTGCCAGGGAACGTGCTGGCCACCCTGAATGGCAGTGTGCTGGACAGCCAGCCAGGGCCCT
GGGCCAGCTGCCCTGCCTCGGAGGTGAGGGCCAGAAGCTGCGGAACGTGCTGGTGTGAGCGCGGGG
GAGGGCTACATCGACTTCCGCAATTGGAGACGGAGAGGACGACGAGACGGAGGAGGGCGCAGGGGACATG
AGCCAGGTGAAGCCGTGCTGTCCAAGGCAGAGCGCAGTCACATCATCGTGTGCCAGGTGTCTACACC
CCCGAG

ACGCGTACGCGGCCGCTCGAGCAGAACTCATCTCAGAAGAGGATCTGGCAGCAATGATATCCTGGAT
TACAAGGATGACGACGATAAGGTTTAAACGGCCGGC

Protein Sequence: >Peptide sequence encoded by RC223531
 Blue=ORF Red=Cloning site Green=Tag(s)

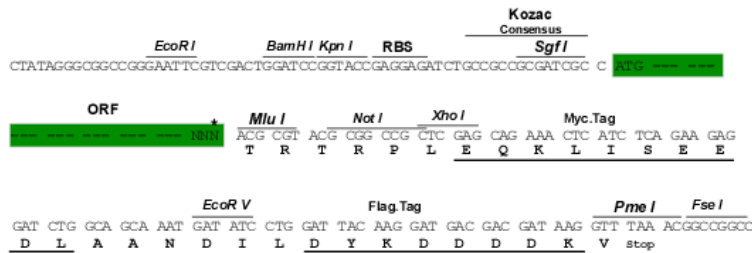
MMEIQMDEGGGVVYQDDYCSGSVMSERVSLAGSIYREFERLIHCYDEEVVKELMPLVNVLENLDSV
 LSENQEHEVELELLREDNEQLLTQYEREKALRRQAEKFIEFEDALEQEKKELQIQVEHYEFQTRQLEL
 KAKNYADQISRLEERESEMKKEYNALHQRHTEMIQTYVEHIERSKMQQVGGNSQTESSLPGRRKERPTS
 LNVFPLADGTVRAQIGGKLVPAGDHWHLSDLGQLQSSSSYQCPQDEMSESGQSSAAATPSTGTGSNTP
 TSSVPSAAVTPLNESLQPLGDYGVGSKNSKRAREKRDSRNMEVQVTQEMRNVSIGMDSSEWSDVQDI
 DSTPELDMCPETRLDRTGSSPTQGI VNKAFGINTDSL YHELSTAGSEVIGDVDEGADLLGEFSVRDDFF
 GMGKEVGNLLLENSQLLETKNALNVKNDLIAKVDQLSGEQEVLRGELEAAKQAKVKLENRIKELEEL
 KRVKSEAIARREPKEEAEDVSSYLCTESDKIPMAQRRRFTRVEMARVLMERNQYKERLMELQEAVRWT
 EMIRASREHPSVQEKKKSTIWQFFSRLFSSSSPPPAKRPYPSVNIHYKSPPTAGFSQRRNHAMCPI SA
 GSRPLEFFPDDCTSSARREQKREYRQVREHVRNDDGRLQACGWSLPAKYKQLSPNGGQEDTRMKNVP
 VPVYCRPLVEKDPTMKLWCAAGVNL SGWRPNEDDAGNGVKPAPGRDPL TCDREGDGEPKSAHTSPEKKK
 AKELPEMDATSSRVWILTSTLTTSKVVIIDANQPGTVVDQFTVCNAHVL CISSIPAASDSYPPGEMFL
 DSDVNPEDPGADGVLGITLVGCATRCNVPRSNCSRRGDPVLDKGQGEVATIANGKVNPSQSTEEATE
 ATEVPDPGPSEPETATLRPGLTEHVFTDPAPTSSGPQPGSENGPEPDSSTRPEPEPSGDPTGAGSS
 AAPTMWLGAQNGWL YVHSAVANWKKLHHSIKLKDSVLSLVHVKGRVLVALADGTLAIFHRGEDGQWDL S
 NYHMLDLGHPHHSIRCMVVYDRVWCGYKNKVHVIQPKTMQIEKSFDAHPRRESQVRQLAWIGDGVVVS
 IRLDSTLRLYHAHTHQHLQDVDIEPYVSKMLGTGKLGFSFVRITALLVAGSRLWVGTGNGVVISIPLTE
 TVVLRHQQLLGLRANKTSPTSGEGARPGGIHVYGDSSDRAASSFIPYCSMAQAQLCFHGHRDAVKFF
 VSVPGNVLATLNGSVLDSPAEGPAPAASEVEGQKLRNVLVLSGGEGYIDFRIGDGEDDETEEGAGDM
 SQVKPVL SKAERSHII VQVSYTPE
 TRTRPLEQKLI SEEDLAANDILDYKDDDDKV

Restriction Sites:

SgfI-MluI

Cloning Scheme:

Cloning sites used for ORF Shuttling:



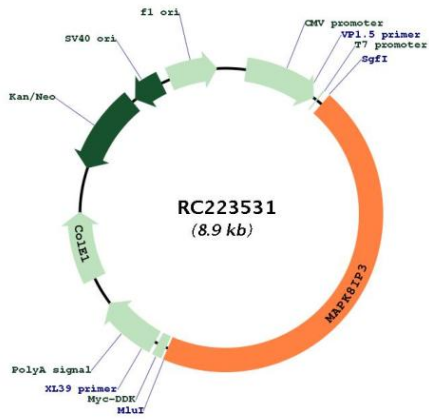
* The last codon before the Stop codon of the ORF

ACCN: NM_015133

ORF Size: 4008 bp

OTI Disclaimer:	The molecular sequence of this clone aligns with the gene accession number as a point of reference only. However, individual transcript sequences of the same gene can differ through naturally occurring variations (e.g. polymorphisms), each with its own valid existence. This clone is substantially in agreement with the reference, but a complete review of all prevailing variants is recommended prior to use. More info
OTI Annotation:	This clone was engineered to express the complete ORF with an expression tag. Expression varies depending on the nature of the gene.
Components:	The ORF clone is ion-exchange column purified and shipped in a 2D barcoded Matrix tube containing 10ug of transfection-ready, dried plasmid DNA (reconstitute with 100 ul of water).
Reconstitution Method:	<ol style="list-style-type: none">1. Centrifuge at 5,000xg for 5min.2. Carefully open the tube and add 100ul of sterile water to dissolve the DNA.3. Close the tube and incubate for 10 minutes at room temperature.4. Briefly vortex the tube and then do a quick spin (less than 5000xg) to concentrate the liquid at the bottom.5. Store the suspended plasmid at -20°C. The DNA is stable for at least one year from date of shipping when stored at -20°C.
RefSeq Size:	5653 bp
RefSeq ORF:	4011 bp
Locus ID:	23162
UniProt ID:	Q9UPT6
Cytogenetics:	16p13.3
Protein Families:	Druggable Genome
Protein Pathways:	MAPK signaling pathway
MW:	147.5 kDa
Gene Summary:	The protein encoded by this gene shares similarity with the product of Drosophila syd gene, required for the functional interaction of kinesin I with axonal cargo. Studies of the similar gene in mouse suggested that this protein may interact with, and regulate the activity of numerous protein kinases of the JNK signaling pathway, and thus function as a scaffold protein in neuronal cells. The C. elegans counterpart of this gene is found to regulate synaptic vesicle transport possibly by integrating JNK signaling and kinesin-1 transport. Several alternatively spliced transcript variants of this gene have been described, but the full-length nature of some of these variants has not been determined. [provided by RefSeq, Jul 2008]

Product images:



Circular map for RC223531