

Product datasheet for **RC223528**

ARHGAP28 (NM_001010000) Human Tagged ORF Clone

Product data:

Product Type:	Expression Plasmids
Product Name:	ARHGAP28 (NM_001010000) Human Tagged ORF Clone
Tag:	Myc-DDK
Symbol:	ARHGAP28
Mammalian Cell Selection:	Neomycin
Vector:	pCMV6-Entry (PS100001)
E. coli Selection:	Kanamycin (25 ug/mL)



[View online »](#)

ORF Nucleotide Sequence:

>RC223528 representing NM_001010000
 Red=Cloning site Blue=ORF Green=Tags(s)

TTTTGTAATACGACTCACTATAGGGCGGCCGGAATTCGTCGACTGGATCCGGTACCGAGGAGATCTGCC
 GCC**CGCATCGCC**

ATGAGGAAAAAGGATAAGCAATCTATCAGGGATGTCAGAGACATTTTTGGAGTCAGTGAATCTCCTCCTC
 GTGATACCTGTGGCAACCACACTAATCAGCTGGATGGCACCAAGGAAGAAAGAGAGCTTCCAAGAGTTAT
 CAAGACAAGTGGTTCCATGCCAGATGATGCTTCTCAACAGTACTACCTGTCTGACGCATCCCAGGAT
 AAAGAAGGGAGTTTTGCGGTTCCAGGAGTGACTCTGTGGCTATACTTGAGACCATTCCAGTTCTACCAG
 TTCATTCCAATGGATCACCGGAGCCTGGACAGCCAGTTCAGAATGCGATAAGTGATGATTTTTCTGGA
 AAAGAACATTCCACCAGAGGCTGAAGAGCTGTCATTTGAAGTGTCTTATTCAGAAATGGTACGGAGGCT
 CTA AAAAGAAATAAACTAAGAAATCAGAGATTAAGAAAGAAGACTATGTTTTAACTAAATTTAATGTT
 AGAAAACCAGATTTGGCTTAACGAAGCAGGAGATCTGTCTGCTGAAGACATGAAGAAAAACCGCATCT
 CTCTCTGATTGAATTGACTGCCTTTTTGATGCCTTTGGAATCAACTGAAAAGGAACAAAACAGAGAAA
 GTAAAAGGACGAGACAATGGGATTTTTGGAGTTCACCTTACAGTCTCCTGGACGGTGACCGAAAAGAAAG
 ACCCTGGAGTGAAAGTCCCCTGGTATTACAAAAATTTTTGAGAAAGTTGAGGAATCAGGTCTGGAATC
 TGAAGGAATTTTTCGACTTTTCAGGATGACTGCTAAAGTCAAGCAATACCGTGAAGAACTTGATGCCAAG
 TTTAATGCTGATAAAATTAATGGGACAAAATGTGCCATAGAGAAGCTGCAGTAATGTTGAAAGCGTTTT
 TCAGAGAACTACCCACCTCTCTCTCCCTGTGGAATATACCTGCCTTCATCAGTCTAATGAAAGAGG
 GCCTCACGTCAAAGTACAGTTTCAAGCCTTACACCTCATGGTCATGGCGTGCCTGATGCCAACAGAGAT
 GCAGCTCAGGCCCTCATGACATTTCAATAAAGTGATTGCCAATGAATCAAAAAACCGAATGAGTCTGT
 GGAACATTTCTACAGTGTGGCACCAACCTTTCTTTCAGTGAAGCAAACTCTGATTATGAAGAATT
 ACTGTTAGCAAACTGCGGCCACATCATCCGCTAATGCTTAAGTACCAGAAGATTTTTGTGGAAGGTT
 CCATCTTTCTTAATCACTCAAGTAAGAAGAAATGAATGAAGCCACGATGCTATTGAAGAAGCAGCTCCCA
 GTGTCAGGAAGCTGCTCAGGAGGAAGACCTCGAGCGGGAGACTGCAAGCCCAAGACTTCAAAGTACT
 GCAAAAATCACCTCGGCAAGACGAATGTCTGACGTGCCGGAAGGAGTACACGGGTCCATGCTCCACTT
 CTCTCAAAGGTGCCATGGCCATCACTCAACAATCAAACCAAGCCAAAGACATATTGGCAAAATTTT
 AATATGAAAACAGTCATGGTTCATCAGAATGTATTAAGATTGAGAACCAAGGTTATATGAAATTTGGAGG
 AAATATAGGAGAGCATTGCTTGGATCCAGATGCTTATATATTGGATGTATATCGTATAAACTCTCAAGCA
 GAATGGGTGATTAACCCCAACAAGTTCT

ACGCGTACGCGGCCGCTCGAGCAGAACTCATCTCAGAAGAGGATCTGGCAGCAAATGATATCCTGGATT
 ACAAGGATGACGACGATAAGGTTTAA

Protein Sequence:

>RC223528 representing NM_001010000
 Red=Cloning site Green=Tags(s)

MRKKDKQSIRDVRDIFGVSESPPRDTCGNHTNQLDGTKEERELPRVIKTSGSMPPDDASLNSTTLDASQD
 KEGSFVPRSDSVAILETIPVLPVHSNGSPEPGQPVQNAISDDDFLEKNIPPEAEELSFEVSYSEMVTEA
 LKRNKLLKSEIKKEDYVLTGFNVQKTRFGLTEAGDL SAEDMCKIRHLSLIELTAFDFAGIQLKRNKTEK
 VKGRDNGIFGVPLTVLLDGRKKDPGVKVPVLVQKFFEKVEESGLESEGIFRLSGCTAKVKQYREELDAK
 FNADKFKWDMCHREAAVMLKAFFRELPTSLFPVEYIPAFISLMERGPVHVQFQALHLMVMALPDANRD
 AAQALMTFFFNKVIANESKNRMSLWNI STVMAPNLFFSRKHS DYELL LANTA AAI IRLMLKYQKILWKV
 PSFLITQVRRMNEATMLLKKQLPSVRKLLRRKTLERETASPKTSKVLQKSPSARRMSDVPEGVIRVHAPL
 LSKVSMAIQLNNQTKAKDILAKFYENSHGSSECIKIQNQLRYEIGGNI GEHCLDPDAYILDVYRINPQA
 EWWIKPQQSS

TRTRPLEQKLISEEDLAANDILDYKDDDDKV

Chromatograms:

https://cdn.origene.com/chromatograms/mk8047_d07.zip

Restriction Sites:

Sgfl-MluI

Cloning Scheme:


ACCN: NM_001010000

ORF Size: 1710 bp

OTI Disclaimer: The molecular sequence of this clone aligns with the gene accession number as a point of reference only. However, individual transcript sequences of the same gene can differ through naturally occurring variations (e.g. polymorphisms), each with its own valid existence. This clone is substantially in agreement with the reference, but a complete review of all prevailing variants is recommended prior to use. [More info](#)

OTI Annotation: This clone was engineered to express the complete ORF with an expression tag. Expression varies depending on the nature of the gene.

Components: The ORF clone is ion-exchange column purified and shipped in a 2D barcoded Matrix tube containing 10ug of transfection-ready, dried plasmid DNA (reconstitute with 100 ul of water).

Reconstitution Method:

1. Centrifuge at 5,000xg for 5min.
2. Carefully open the tube and add 100ul of sterile water to dissolve the DNA.
3. Close the tube and incubate for 10 minutes at room temperature.
4. Briefly vortex the tube and then do a quick spin (less than 5000xg) to concentrate the liquid at the bottom.
5. Store the suspended plasmid at -20°C. The DNA is stable for at least one year from date of shipping when stored at -20°C.

RefSeq: [NM_001010000.3](#)

RefSeq Size: 5482 bp

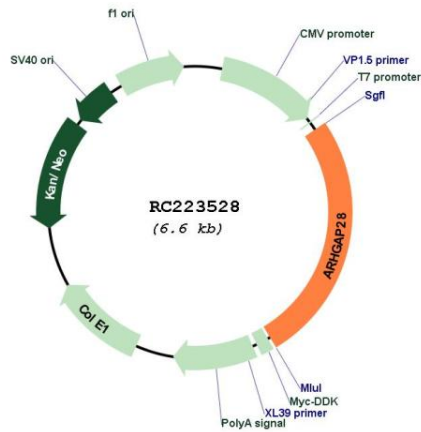
RefSeq ORF: 1713 bp

Locus ID: 79822

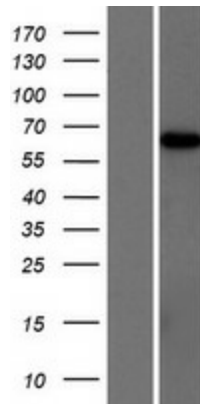
Cytogenetics: 18p11.31

MW: 64.4 kDa

Product images:



Circular map for RC223528



Western blot validation of overexpression lysate (Cat# [LY423177]) using anti-DDK antibody (Cat# [TA50011-100]). Left: Cell lysates from untransfected HEK293T cells; Right: Cell lysates from HEK293T cells transfected with RC223528 using transfection reagent MegaTran 2.0 (Cat# [TT210002]).