

## Product datasheet for **RC223511**

### **RAB27A (NM\_183236) Human Tagged ORF Clone**

#### Product data:

**Product Type:** Expression Plasmids  
**Product Name:** RAB27A (NM\_183236) Human Tagged ORF Clone  
**Tag:** Myc-DDK  
**Symbol:** RAB27A  
**Synonyms:** GS2; HsT18676; RAB27; RAM  
**Mammalian Cell Selection:** Neomycin  
**Vector:** pCMV6-Entry (PS100001)  
**E. coli Selection:** Kanamycin (25 ug/mL)  
**ORF Nucleotide Sequence:** >RC223511 representing NM\_183236  
**Red=Cloning site Blue=ORF Green=Tags(s)**

TTTTGTAATACGACTCACTATAGGGCGCCGGGAATTCGTCGACTGGATCCGGTACCGAGGAGATCTGCC  
GCC**CGATCGCC**

ATGTCTGATGGAGATTATGATTACCTCATCAAGTTTTAGCTTTGGGAGACTCTGGTGTAGGAAGACCA  
GTGTACTTTACCAATATACAGATGGTAAATTTAACTCAAATTTATCACAAACAGTGGCATTGATTTTCAG  
GGAAAAAAGAGTGGTGTACAGAGCCAGTGGCCGGATGGAGCCACTGGCAGAGGCCAGAGAATCCACCTG  
CAGTTATGGGACACAGCAGGGCAGGAGAGGTTTCGTAGCTTAACGACAGCGTTCTTCAGAGATGCTATGG  
GTTTTCTTCTACTTTTTGATCTGACAAATGAGCAAAGTTTCTCAATGTCAGAACTGGATAAGCCAGCT  
ACAGATGCATGCATATTGTGAAAACCCAGATATAGTGCTGTGTGAAACAAGAGTGATCTGGAGGACCAG  
AGAGTAGTGAAAGAGGAGGAAGCCATAGCACTCGCAGAGAAATATGGAATCCCCTACTTTGAAACTAGTG  
CTGCCAATGGGACAAACATAAGCCAAGCAATTGAGATGCTTCTGGACCTGATAATGAAGCGAATGGAACG  
GTGTGTGGACAAGTCCTGGATTCTGAAGGAGTGGTGCATCAAATGGTCATGCCTCTACGGATCAGTTA  
AGTGAAGAAAAGGAGAAAGGGCATGTGGCTGT

**ACGCGT**ACGCGGCCGCTCGAGCAGAACTCATCTCAGAAGAGGATCTGGCAGCAAATGATATCCTGGATT  
ACAAGGATGACGACGATAAGGTTTAA



[View online »](#)

**Protein Sequence:** >RC223511 representing NM\_183236  
Red=Cloning site Green=Tags(s)

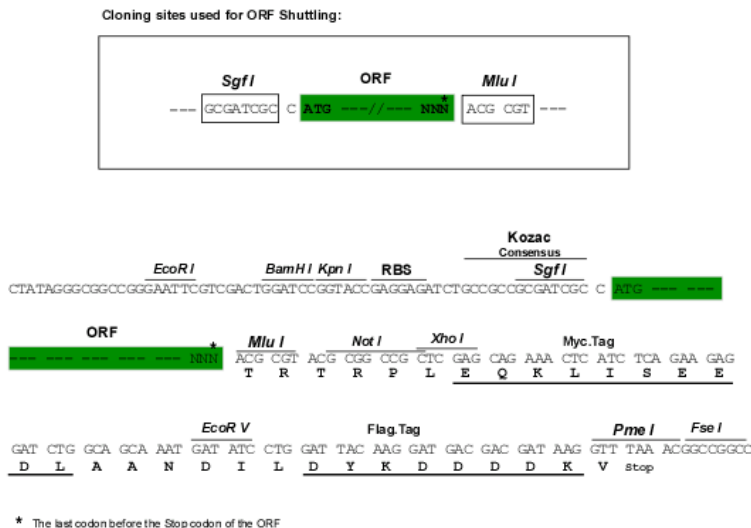
MSDGDYDYLKFLALGDSGVGKTSVLYQYTDGKFNPKFITTVGIDFREKRVVYRASGPDGATGRGQRIHL  
 QLWDTAGQERFRSLTTAFRDAMGFLLLFDLTNEQSFLNVRNWI SQLQMHAYCENPDIVLCGNKSDLEDQ  
 RVVKEEEAIALAEKYGIPYFETSAANGTNISQAIEMLLDLIMKRMERCVDKSWIPEGVVRSNGHASTDQL  
 SEEKEKGACGC

TRTRPLEQKLISEEDLAANDILDYKDDDDKV

**Chromatograms:** [https://cdn.origene.com/chromatograms/mk6470\\_c02.zip](https://cdn.origene.com/chromatograms/mk6470_c02.zip)

**Restriction Sites:** SgfI-MluI

**Cloning Scheme:**



**ACCN:** NM\_183236

**ORF Size:** 663 bp

**OTI Disclaimer:** The molecular sequence of this clone aligns with the gene accession number as a point of reference only. However, individual transcript sequences of the same gene can differ through naturally occurring variations (e.g. polymorphisms), each with its own valid existence. This clone is substantially in agreement with the reference, but a complete review of all prevailing variants is recommended prior to use. [More info](#)

**OTI Annotation:** This clone was engineered to express the complete ORF with an expression tag. Expression varies depending on the nature of the gene.

**Components:** The ORF clone is ion-exchange column purified and shipped in a 2D barcoded Matrix tube containing 10ug of transfection-ready, dried plasmid DNA (reconstitute with 100 ul of water).

**Reconstitution Method:**

1. Centrifuge at 5,000xg for 5min.
2. Carefully open the tube and add 100ul of sterile water to dissolve the DNA.
3. Close the tube and incubate for 10 minutes at room temperature.
4. Briefly vortex the tube and then do a quick spin (less than 5000xg) to concentrate the liquid at the bottom.
5. Store the suspended plasmid at -20°C. The DNA is stable for at least one year from date of shipping when stored at -20°C.

**RefSeq:** [NM\\_183236.3](#)

**RefSeq Size:** 2772 bp

**RefSeq ORF:** 666 bp

**Locus ID:** 5873

**UniProt ID:** [P51159](#)

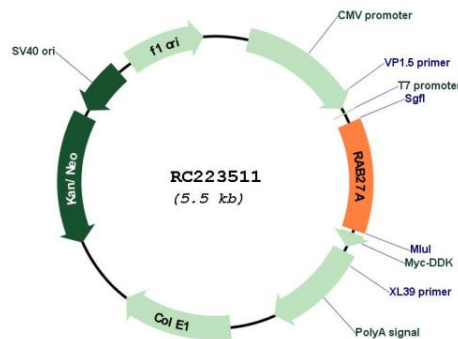
**Cytogenetics:** 15q21.3

**Protein Families:** Druggable Genome

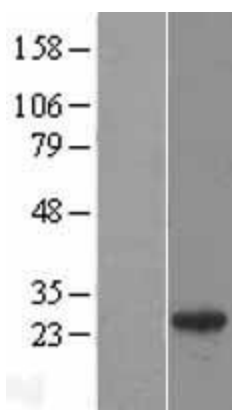
**MW:** 24.7 kDa

**Gene Summary:** The protein encoded by this gene belongs to the small GTPase superfamily, Rab family. The protein is membrane-bound and may be involved in protein transport and small GTPase mediated signal transduction. Mutations in this gene are associated with Griscelli syndrome type 2. Alternative splicing occurs at this locus and four transcript variants encoding the same protein have been identified. [provided by RefSeq, Jul 2008]

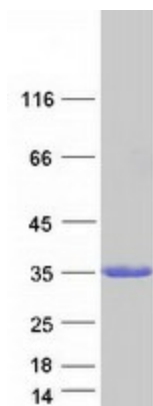
### Product images:



Circular map for RC223511



Western blot validation of overexpression lysate (Cat# [LY405231]) using anti-DDK antibody (Cat# [TA50011-100]). Left: Cell lysates from untransfected HEK293T cells; Right: Cell lysates from HEK293T cells transfected with RC223511 using transfection reagent MegaTran 2.0 (Cat# [TT210002]).



Coomassie blue staining of purified RAB27A protein (Cat# [TP323511]). The protein was produced from HEK293T cells transfected with RAB27A cDNA clone (Cat# RC223511) using MegaTran 2.0 (Cat# [TT210002]).