

Product datasheet for **RC223509**

CNKSR1 (NM_006314) Human Tagged ORF Clone

Product data:

| | |
|---------------------------|---|
| Product Type: | Expression Plasmids |
| Product Name: | CNKSR1 (NM_006314) Human Tagged ORF Clone |
| Tag: | Myc-DDK |
| Symbol: | CNKSR1 |
| Synonyms: | CNK; CNK1 |
| Mammalian Cell Selection: | Neomycin |
| Vector: | pCMV6-Entry (PS100001) |
| E. coli Selection: | Kanamycin (25 ug/mL) |



[View online »](#)

ORF Nucleotide
Sequence:

>RC223509 representing NM_006314
Red=Cloning site Blue=ORF Green=Tags(s)

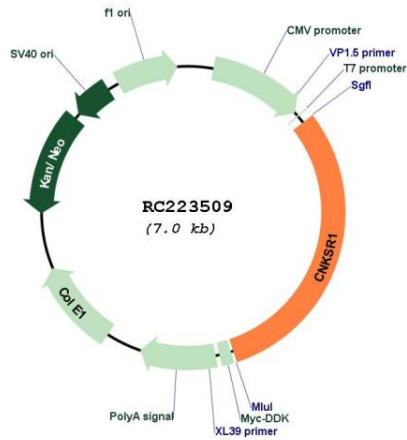
TTTTGTAATACGACTCACTATAGGGCGGCCGGGAATTCGTCGACTGGATCCGGTACCGAGGAGATCTGCC
GCC**CGGATCGCC**

ATGGAACCGGTAGAGACCTGGACCCCGGAAAGGTGGCAACTGGCTGAGAGGTCTTGACGACTCCCTGC
AGGACTATCCCTTTGAGGACTGGCAGCTGCCTGGCAAGAACCTGCTCCAGCTCTGCCCCAAAGCCTCGA
GGCTCTGGCTGTGCGGTCTCTGGGACACCAAGGAGCTCATCCTGGGCGGGGTGGAACAGCTCCAGGCCCTG
AGCTCCAGGCTACAGACAGAGAACCTGCAAAGCCTGACAGAGGGACTTCTGGGGCAACCCATGACTTCC
AGAGCATAGTCCAAGGCTGCCTGGGGGACTGTGCCAAGACCCCTATTGATGTCCTCTGTGCAGCTGTGGA
GCTGTTGCATGAAGCTGACGCCCTCCTCTTCTGGCTCAGCAGGTACCTTCTCCCACTTAAATGATTTT
TCAGCATGCCAGGAGATCCGAGACTTGTGGAGGAGCTGAGCCAGGTCTGCATGAGGATGGTCCAGCGG
CTGAGAAGGAGGGCACAGTCTGAGGATCTGCAGCCACGTGGCTGGGATCTGCCACAACATCCTGGTCTG
CTGCCCAAGGAGCTGCTGGAACAGAAGGCCGTGCTCGAGCAGGTGCAGCTGGACAGTCCATTGGGCTA
GAAATTCACACCACAGCAATTGCCAGCACTTTGTGTCCAAGTGGACACCCAGGTTCCCACTGACTCCC
GACTGCAGATCCAGCCTGGAGACGAGGTTGTCCAGATCAACGAGCAGGTGGTGGTGGGATGGCCCGTAA
GAACATGGTGAGGGAACCTGCTGCGGGAGCCAGCCGGACTCAGCTTAGTGCTGAAGAAGATCCCGATACCG
GAGACCCCCACAGACGCCCTCAGGTCCTGGACTCCCGCACCAGAGGAGCCATCACTGTCTCTGG
CCCCACTGTCTCCAGGGCCCCATCTGAAGACGTCTTTCCTTTGACCTGTCTTCAAACCCAGTCCCGG
ACCCAGCCCTGCCTGGACAGACTCTGCCTCCCTTGGCCCTGAGCCCTGCCATCCCCCGGAACCCCA
GCCATACTCCAGCAGGGGTAGCAGGGACTCCAGGGTCCCTGAATCCCCTGACAAGAGTCTGTGGTC
GGAAGAAATCAAAGGCCTGGCGACCCGGCTGAGCCGCCGGGGTGTGATGCCGTGAGGCGCCGCGC
GGACTGTGACGGCTGGCTCCTGTTGCGAAAGGCACCCGGGCGGCTTCATGGGCCCGCGCTGGCGCCGCGC
TGGTTTGTGCTCAAGGGACACACGCTCTACTGGTACCGCCAGCCAGGATGAGAAGGCTGAGGGCTCA
TCAATGTCTCCAATAAGTCTGGAAAGTGGACATGATCAGAAGAAGAAATATGTGTTTCAGCTCACCCA
TGATGTGTACAAACCTTCATCTTCGCTGCTGATACCCTGACAGATCTGAGCATGTGGGTGCGTCATCTC
ATTACCTGCATCTCAAGTACCAGTCTCCAGGCCGGGCCCCCCCCACCCGAGAGGAAGACTGCTACAGTG
AGACCGAAGCAGAGGACCCGGACGATGAGGCTGGGTCCCACTCAGCCTCGCCAGCCCTGCTCAAGCTGG
GAGTCCCCTCCATGGAGACACATCACCTGCAGCCACCCACACAGCGCAGCCACGGACCTCCTTTGGC
TCTCTGACAGACAGCAGTGAAGAGGCACTGGAAGGAATGGTACGGGGCTGAGGCAGGGTGGCGTGTCCC
TCCTAGGCCAGCCACAGCCCTGACCCAGGAACAGTGGCGGAGCTTTTCATGCGGCGCAACCGAGACCC
TCAGCTCAATGAGCGAGTGCACCGTGTGCGGGCGCTACAGAGCACACTCAAGGCAAAGCTGCAGGAGCTG
CAGGTCCTAGAAGAAGTCTGGGTGACCCTGAGCTGACAGGAGAGAAGTCCGCCAGTGAAGGAGCAGA
ACCGGGAGCTGTACTCAGAGGGCCTGGGGGCTGGGGAGTGGCACAGGCTGAAGGAGCTCCACATCTT
GACCTCTGACTCCACAGAACAGTCCCCAACTCCCTGCCCTTGACCCTGAAGAGCACTCCCATCTCTGC
CCCCTGACCTCAGAGAGCAGCCTCCGACCTCTGACCTC

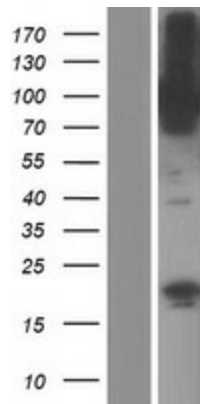
ACGCGTACGCGGCCGCTCGAGCAGAACTCATCTCAGAAGAGGATCTGGCAGCAAATGATATCTGGATT
ACAAGGATGACGACGATAAGGTTTAA

| | |
|-------------------------------|--|
| OTI Disclaimer: | <p>Due to the inherent nature of this plasmid, standard methods to replicate additional amounts of DNA in E. coli are highly likely to result in mutations and/or rearrangements. Therefore, OriGene does not guarantee the capability to replicate this plasmid DNA. Additional amounts of DNA can be purchased from OriGene with batch-specific, full-sequence verification at a reduced cost. Please contact our customer care team at custsupport@origene.com or by calling 301.340.3188 option 3 for pricing and delivery.</p> <p>The molecular sequence of this clone aligns with the gene accession number as a point of reference only. However, individual transcript sequences of the same gene can differ through naturally occurring variations (e.g. polymorphisms), each with its own valid existence. This clone is substantially in agreement with the reference, but a complete review of all prevailing variants is recommended prior to use. More info</p> |
| OTI Annotation: | <p>This clone was engineered to express the complete ORF with an expression tag. Expression varies depending on the nature of the gene.</p> |
| Components: | <p>The ORF clone is ion-exchange column purified and shipped in a 2D barcoded Matrix tube containing 10ug of transfection-ready, dried plasmid DNA (reconstitute with 100 ul of water).</p> |
| Reconstitution Method: | <ol style="list-style-type: none">1. Centrifuge at 5,000xg for 5min.2. Carefully open the tube and add 100ul of sterile water to dissolve the DNA.3. Close the tube and incubate for 10 minutes at room temperature.4. Briefly vortex the tube and then do a quick spin (less than 5000xg) to concentrate the liquid at the bottom.5. Store the suspended plasmid at -20°C. The DNA is stable for at least one year from date of shipping when stored at -20°C. |
| RefSeq: | <p>NM_006314.1, NP_006305.1</p> |
| RefSeq Size: | <p>2530 bp</p> |
| RefSeq ORF: | <p>2142 bp</p> |
| Locus ID: | <p>10256</p> |
| UniProt ID: | <p>Q969H4</p> |
| Cytogenetics: | <p>1p36.11</p> |
| Protein Families: | <p>Druggable Genome</p> |
| MW: | <p>78.6 kDa</p> |
| Gene Summary: | <p>This gene encodes a protein containing several motifs involved in protein-protein interaction, including PDZ, PH (Pleckstrin homology), and SAM (sterile alpha motif) domains. The encoded protein acts as a scaffold component for receptor tyrosine kinase signaling and may mediate crosstalk between different signaling pathways. Alternative splicing results in multiple transcript variants. [provided by RefSeq, Jul 2014]</p> |

Product images:



Circular map for RC223509



Western blot validation of overexpression lysate (Cat# [LY416730]) using anti-DDK antibody (Cat# [TA50011-100]). Left: Cell lysates from untransfected HEK293T cells; Right: Cell lysates from HEK293T cells transfected with RC223509 using transfection reagent MegaTran 2.0 (Cat# [TT210002]).