

## Product datasheet for RC223507

### Olfactory receptor 13C8 (OR13C8) (NM\_001004483) Human Tagged ORF Clone

#### Product data:

Product Type:	Expression Plasmids
Product Name:	Olfactory receptor 13C8 (OR13C8) (NM_001004483) Human Tagged ORF Clone
Tag:	Myc-DDK
Symbol:	Olfactory receptor 13C8
Synonyms:	OR9-10; OR37H
Mammalian Cell Selection:	Neomycin
Vector:	pCMV6-Entry (PS100001)
E. coli Selection:	Kanamycin (25 ug/mL)
ORF Nucleotide Sequence:	>RC223507 representing NM_001004483 Red=Cloning site Blue=ORF Green=Tags(s)

TTTTGTAATACGACTCACTATAGGGCGGCCGGAATTCGTCGACTGGATCCGGTACCGAGGAGATCTGCC  
GCC**CGATCGCC**

ATGGAAAGGACCAACGATTCCACGTCGACAGAATTTTTCTGGTAGGGCTTTCTGCCACCCAAAGCTCC  
AGACAGTTTTCTCGTTCTAATTTGTGGATGTACCTGATGATCCTGCTTGAAATGGAGTCCTTATCTC  
AGTTATCATCTTTGATTCTCACCTGCACACCCCATGATTTCTCCTCTGTAATCTTCTCCTCGAC  
GTTTGCTACACAAGTTCTCTGTCCCACTAATTCTTGCCAGCTTTCTGGCAGTAAAGAAAAGTTTCT  
TCTCTGGGTGATGGTGCAAATGTTATTTCTTTGCCATGGGGCCACGGAGTGCATGATCTTAGGCAC  
GATGGCACTGGACCGCTATGTGGCCATCTGCTACCCACTGAGATACCCTGTCATCATGAGCAAGGGTCC  
TATGTGGCCATGGCAGCTGGGTCCTGGGTCCTGGGTCCTGGGTCAGTGTGACTCAGTGTGACAGACGCTTTGCAA  
TGCAGTTACCATCTGTGCTAATAATGTCATTAACATTTTGTCTGTGAAATTCTGGCTATCTTGAACT  
GGCCTGTGCTGATATTTCAATCAATGTGATTAGTATGACAGGGTGAATCTGATTGTTCTGGTTATTCCA  
TTGTTAGTAATTTCCATCTTTACATATTTATTGTTGCCACTATTCTGAGGATTCCTTCCACTGAAGGAA  
AACATAAGGCCTTCTCCACCTGCTCAGCCACCTGACAGTGGTGATTATTTCTATGGAACCATCTTCTT  
CATGTACGCAAAGCCTGAGTCTAAAGCCTCTGTTGATTCAGGTAATGAAGACATCATTGAGGCCCTCATC  
TCCCTTTCTATGGAGTGATGACTCCCATGCTTAATCCTCTCATCTATAGTCTGCGAAACAAGGATGTAA  
AGGCTGCTGTCAAAAACATACTGTGTAGGAAAACTTTTCTGATGGAAAA

**ACGCGT**ACGCGGCCGCTCGAGCAGAAACTCATCTCAGAAGAGGATCTGGCAGCAATGATATCCTGGATT  
ACAAGGATGACGACGATAAGGTTTAA



[View online »](#)

**Protein Sequence:** >RC223507 representing NM\_001004483  
Red=Cloning site Green=Tags(s)

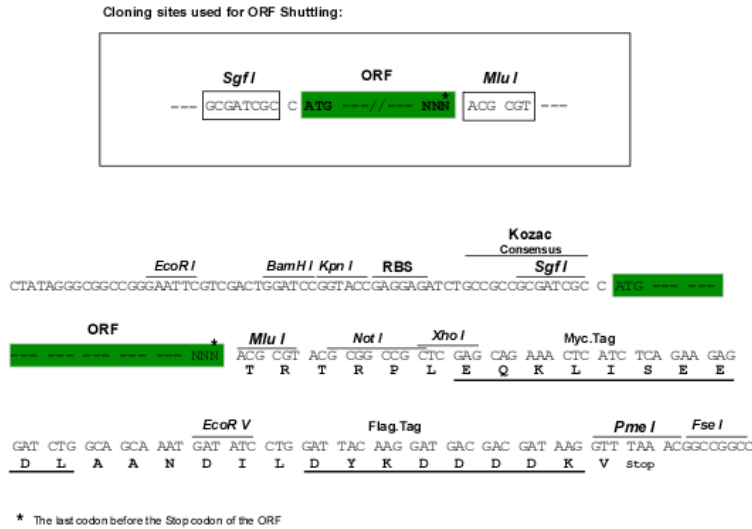
MERTNDSTSTEFFLVGLSAHPKLQTVFFVLILWMYLMILLGNGVLISVIIIFDShLHTPMYFFLCNLSFLD  
 VCYTSSSVPLILASFLAVKKKVSFSGCMVQMFISFAMGATECMILGTMALDRYVAICYPLRYPVIMSKGA  
 YVAMAAGSWVTGLVDSVQTAFAAMQLPFCANNVIKHFVCEILAILKLACADISINVISMTGSNLIVLVIP  
 LLVISISYIFIVATILRIPSTEGKHKAFSTCSAHLTVVIIIFYGTIFFMYAKPESKASVDSGNEDIIEALI  
 SLFYGVMTPLNPLIYSLRNKDVKA AVKNILCRKNFSDGK

TRTRPLEQKLISEEDLAANDILDYKDDDDKVK

**Chromatograms:** [https://cdn.origene.com/chromatograms/mk8002\\_c05.zip](https://cdn.origene.com/chromatograms/mk8002_c05.zip)

**Restriction Sites:** SgfI-MluI

**Cloning Scheme:**



**ACCN:** NM\_001004483

**ORF Size:** 960 bp

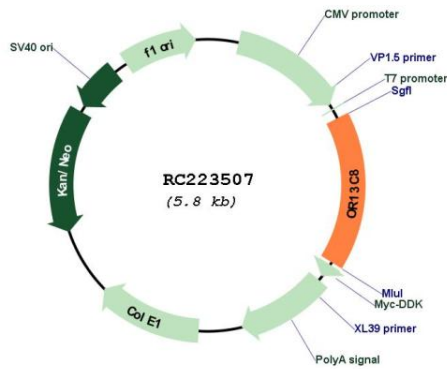
**OTI Disclaimer:** The molecular sequence of this clone aligns with the gene accession number as a point of reference only. However, individual transcript sequences of the same gene can differ through naturally occurring variations (e.g. polymorphisms), each with its own valid existence. This clone is substantially in agreement with the reference, but a complete review of all prevailing variants is recommended prior to use. [More info](#)

**OTI Annotation:** This clone was engineered to express the complete ORF with an expression tag. Expression varies depending on the nature of the gene.

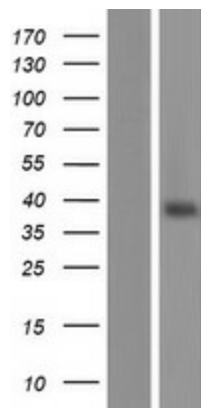
**Components:** The ORF clone is ion-exchange column purified and shipped in a 2D barcoded Matrix tube containing 10ug of transfection-ready, dried plasmid DNA (reconstitute with 100 ul of water).

<b>Reconstitution Method:</b>	<ol style="list-style-type: none"><li>1. Centrifuge at 5,000xg for 5min.</li><li>2. Carefully open the tube and add 100ul of sterile water to dissolve the DNA.</li><li>3. Close the tube and incubate for 10 minutes at room temperature.</li><li>4. Briefly vortex the tube and then do a quick spin (less than 5000xg) to concentrate the liquid at the bottom.</li><li>5. Store the suspended plasmid at -20°C. The DNA is stable for at least one year from date of shipping when stored at -20°C.</li></ol>
<b>RefSeq:</b>	<a href="#">NM_001004483.1</a> , <a href="#">NP_001004483.1</a>
<b>RefSeq Size:</b>	963 bp
<b>RefSeq ORF:</b>	963 bp
<b>Locus ID:</b>	138802
<b>UniProt ID:</b>	<a href="#">Q8NGS7</a>
<b>Cytogenetics:</b>	9q31.1
<b>Protein Families:</b>	Transmembrane
<b>Protein Pathways:</b>	Olfactory transduction
<b>MW:</b>	35.1 kDa
<b>Gene Summary:</b>	Olfactory receptors interact with odorant molecules in the nose, to initiate a neuronal response that triggers the perception of a smell. The olfactory receptor proteins are members of a large family of G-protein-coupled receptors (GPCR) arising from single coding-exon genes. Olfactory receptors share a 7-transmembrane domain structure with many neurotransmitter and hormone receptors and are responsible for the recognition and G protein-mediated transduction of odorant signals. The olfactory receptor gene family is the largest in the genome. The nomenclature assigned to the olfactory receptor genes and proteins for this organism is independent of other organisms. [provided by RefSeq, Jul 2008]

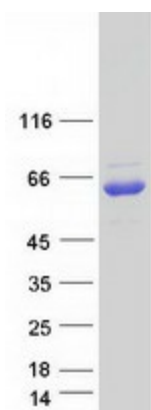
Product images:



Circular map for RC223507



Western blot validation of overexpression lysate (Cat# [LY423786]) using anti-DDK antibody (Cat# [TA50011-100]). Left: Cell lysates from untransfected HEK293T cells; Right: Cell lysates from HEK293T cells transfected with RC223507 using transfection reagent MegaTran 2.0 (Cat# [TT210002]).



Coomassie blue staining of purified OR13C8 protein (Cat# [TP323507]). The protein was produced from HEK293T cells transfected with OR13C8 cDNA clone (Cat# RC223507) using MegaTran 2.0 (Cat# [TT210002]).