

Product datasheet for **RC223504**

Methyltransferase like 6 (METTL6) (NM_152396) Human Tagged ORF Clone

Product data:

Product Type:	Expression Plasmids
Product Name:	Methyltransferase like 6 (METTL6) (NM_152396) Human Tagged ORF Clone
Tag:	Myc-DDK
Symbol:	Methyltransferase like 6
Mammalian Cell Selection:	Neomycin
Vector:	pCMV6-Entry (PS100001)
E. coli Selection:	Kanamycin (25 ug/mL)
ORF Nucleotide Sequence:	>RC223504 representing NM_152396 Red=Cloning site Blue=ORF Green=Tags(s)

TTTTGTAATACGACTCACTATAGGGCGGCCGGAATTCGTCGACTGGATCCGGTACCGAGGAGATCTGCC
GCC**CGATCGCC**

ATGGCTTCTTTGCAAAGGAAAGGGCTGCAGGCAAGGATTCTCACCTCTGAAGAAGAGGAGAACTGAAAA
GAGACAACTTTGGTGTCTGATTTTAAACAGCAGAAATTGGAACAAGAGGCTCAGAAAAATTGGGATCT
TTTTTACAAAAGAAATAGCACTAATTTCTCAAAGACAGACACTGGACCACCAGAGAGTTTGAGGAGCTA
AGATCATGTAGAGAGTTGAAGATCAAAGTTAACAATGCTTGAAGCTGGCTGTGGGTTGGAAACTGTT
TATCCCACTTTTAGAAGAAGATCCGAATATCTTTGCCTATGCCGTGATTTTTCTCCAAGAGCCATTGA
ATATGTTAAGCAAATCCTTTATATGATACAGAAAGATGCAAGGTATTCCAGTGTGATCTGACTAAAGAT
GATCTTCTGGATCATGTACCGCCAGAGTCTGTGGATGTTGTTATGTTGATATTTGTGCTGTCAGCTGTT
ATCCTGATAAGATGCACCTTGTCTTACAAAACATTTACAAGGTATTAACCAGGCAAAAGTGTCTTGT
TCGTGACTACGGACTGTATGATCATGCCATGCTTAGGTTTAAAGCCAGCAGCAAACCTGGAGAAAACCTT
TATGTTAGACAAGATGGGACCAGATCATATTTTTTTACTGATGACTTCTGGCTCAGCTCTTTATGGACA
CAGGTTATGAAGAAGTGGTAAACGAGTATGTGTTTCGAGAGACGGTGAATAAAAAAGAAGGCTGTGTG
GCCAAGAGTTTTCTTCAGAGCAAATTTCTAAAGCCTCCTAAGAACCCATCTCTGTGTCTGGCCTG
GATCCTAAGTCC

ACGCGTACGCGGCCGCTCGAGCAGAAACTCATCTCAGAAGAGGATCTGGCAGCAAATGATATCCTGGATT
ACAAGGATGACGACGATAAGGTTTAA



[View online »](#)

Protein Sequence: >RC223504 representing NM_152396
Red=Cloning site Green=Tags(s)

MASLQRKGLQARILTSEEEKLRDQTLVSDFKQKLEQEAQKNWDLFYKRNSTNFFKDRHWTTFEEEL
 RSCREFEDQKLTMLEAGCGVGNCLFPLLEEDPNIFAYACDFSPRAIEYVKQNPLYDTERCKVFQCDLTKD
 DLLLDHVPPEVDVVMLIFVLSAVHPDKMHLVLQNIYKVLKPGKSVLFRDYGLYDHAMLRFKASSKLGENT
 YVRQDGTSTRSYFFTDFFLAQLFMDTGYEEVVNEYVFRETVNKKEGLCVPRVFLQSKFLKPPKNPSPVVLGL
 DPKS

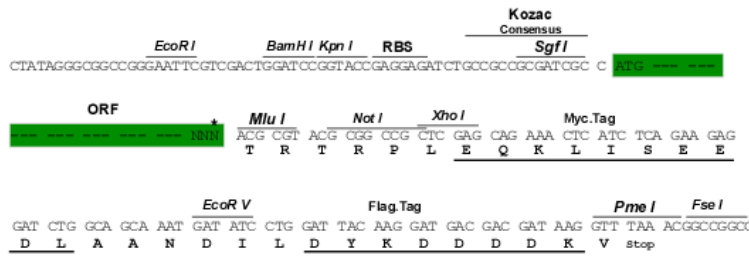
TRTRPLEQKLISEEDLAANDILDYKDDDDKV

Chromatograms: https://cdn.origene.com/chromatograms/mg4215_a01.zip

Restriction Sites: SgfI-MluI

Cloning Scheme:

Cloning sites used for ORF Shuttling:



* The last codon before the Stop codon of the ORF

ACCN: NM_152396

ORF Size: 852 bp

OTI Disclaimer: The molecular sequence of this clone aligns with the gene accession number as a point of reference only. However, individual transcript sequences of the same gene can differ through naturally occurring variations (e.g. polymorphisms), each with its own valid existence. This clone is substantially in agreement with the reference, but a complete review of all prevailing variants is recommended prior to use. [More info](#)

OTI Annotation: This clone was engineered to express the complete ORF with an expression tag. Expression varies depending on the nature of the gene.

Components: The ORF clone is ion-exchange column purified and shipped in a 2D barcoded Matrix tube containing 10ug of transfection-ready, dried plasmid DNA (reconstitute with 100 ul of water).

Reconstitution Method:

1. Centrifuge at 5,000xg for 5min.
2. Carefully open the tube and add 100ul of sterile water to dissolve the DNA.
3. Close the tube and incubate for 10 minutes at room temperature.
4. Briefly vortex the tube and then do a quick spin (less than 5000xg) to concentrate the liquid at the bottom.
5. Store the suspended plasmid at -20°C. The DNA is stable for at least one year from date of shipping when stored at -20°C.

RefSeq: [NM_152396.4](#)

RefSeq Size: 2499 bp

RefSeq ORF: 855 bp

Locus ID: 131965

UniProt ID: [Q8TCB7](#)

Cytogenetics: 3p25.1

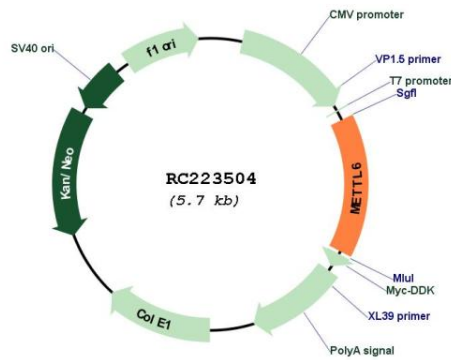
Protein Families: Druggable Genome

Protein Pathways: Androgen and estrogen metabolism, Histidine metabolism, Selenoamino acid metabolism, Tyrosine metabolism

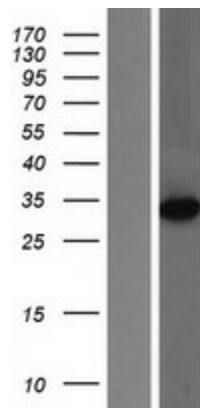
MW: 33.1 kDa

Gene Summary: Probable methyltransferase.[UniProtKB/Swiss-Prot Function]

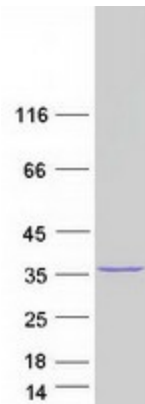
Product images:



Circular map for RC223504



Western blot validation of overexpression lysate (Cat# [LY407564]) using anti-DDK antibody (Cat# [TA50011-100]). Left: Cell lysates from untransfected HEK293T cells; Right: Cell lysates from HEK293T cells transfected with RC223504 using transfection reagent MegaTran 2.0 (Cat# [TT210002]).



Coomassie blue staining of purified METTL6 protein (Cat# [TP323504]). The protein was produced from HEK293T cells transfected with METTL6 cDNA clone (Cat# RC223504) using MegaTran 2.0 (Cat# [TT210002]).