

Product datasheet for **RC223499**

CHDIL (NM_004284) Human Tagged ORF Clone

Product data:

Product Type:	Expression Plasmids
Tag:	Myc-DDK
Symbol:	CHDIL
Synonyms:	ALCI; CHDL
Mammalian Cell Selection:	Neomycin
Vector:	pCMV6-Entry (PS100001)
E. coli Selection:	Kanamycin (25 ug/mL)



ORF Nucleotide Sequence: >RC223499 representing NM_004284
Red=Cloning site Blue=ORF Green=Tags(s)

TTTTGTAATACGACTACTATAGGGCGCCGGGAATTCGTGACTGGATCCGGTACCGAGGAGATCTGCC
GCCGCGATCGCC

ATGGAGCGCGGGCGCTACTAGCCGCGGGGCCAAGCGCCTGGCTTCTTACTGCGGCTTCATACTGAGG
GCCGAGCCGAGGCGCGGGTGCAGGAGCAGGACTTACGGCAGTGGGGCTGACAGGGATTCACCTACG
CTCTTACCAGCTGGAGGAGTAAACTGGCTCGCCAGCGCTTCCATTGTGAGAATGGCTGTATCCTGGGA
GATGAGATGGGCCTGGGAAGACCTGCCAGACTATTGCTCTCTTCAATTTATTTGGCAGGAAGATTAATG
ATGAAGGGCCATTTCTGATTCTTTGTCCCTTGCTGTGTTTGGCAACTGGAAAAGAAGAAATGCAGAGAT
TGCTCCAGGTCTTTCTGTGTAACATATGCAGGCGACAAGGAGGAAAAGAGCCTGCCCTTCAGCAAGACCTG
AAACAGGAGTCACGTTTTTCATGTGCTACTGACTACCTATGAGATTTGCTTGAAAGATGCATCATTCTAA
AATCATTCCCTTGAGTGTCTTGTGTGGATGAAGCTCACAGGTTGAAAAACCAAAGCTCCCTGCTGCA
TAAGACCTTGTGAGTTCAGTAGTCTTCAAGTCTCTGTTGACCGGAACTCCCATCCAGAACAGCCTC
CAAGAGCTCTACTCCCTCAGTTTTGTGGAGCCTGATCTTTTTCCAAGGAAGAGGTGGGAGATTTTA
TTCAACGCTACCAGGATTTGAGAAAAGATCTGAGTCAGCAAGTGAAGTGCACAAACTTTGCGAGCCATT
TCTGCTGAGGCGAGTGAAGCTGAGGTAGCTACAGAGCTTCCCAAGAAGACAGAAGTGTGATATACCAT
GGCATGTGAGCATTGCAGAAGAAATACTACAAGGCCATTTTGTGAAAGACCTAGATGCATTTGAAAATG
AGACGGCAAAGAAAAGTTAAACTACAGAACATTTTGTCCAGCTTCGAAAAGTGTGGATCACCCATATTT
GTTTGTGTTGGAGCGGAGCCTTTTGAAGTTGGAGACCCTGACTGAGGCTAGTGGGAAGCTTAC
CTGCTGGATAAGCTACTAGCATTCTGTATTCTGGGGCCATCGGGTTTTACTTTTCTCCAAAATGACCC
AGATGTTGGATATCTCCAAGACTATATGGATTACAGAGGCTACAGCTATGAGCGTGTGGATGGTCTGT
GAGAGGAGAAGAGAGACACTTGGCCATTAAGAATTTGGACAGCAGCCATTTTCGTTTTTCTCCTGAGT
ACTAGGGCAGGTGGAGTTGGCATGAACTTAACAGCAGCAGATACTGTGATTTTTGTTGACAGTGACTTTA
ATCCTCAGAATGACTTGAAGCAGCTGCCAGGGCTCATCGCATTGGCCAAAACAAGTCTGTTAAAGTTAT
TCGGCTGATTGGTCGAGACACTGTGGAAGAAATAGTCTATAGGAAAGCAGCCTCCAACTGCAGCTCACC
AACATGATCATAGAAGGAGGCCATTTTACTCTGGGAGCCAGAAAACCCGCTGCCGATGCTGACCTCCAGT
TGAGTGAGATACTCAAATTTGGTTTGGATAAACTGCTGGCCTCTGAGGGGAGCACCATGGATGAAATAGA
CCTGGAGTCCATACTGGGAGAAAACAAAGATGGCCAGTGGGTCTCTGATGCCTTGCCTGCAGCAGAAGGA
GGGAGCAGAGATCAAGAGGAAGGAAAAATCATATGTACTTATTTGAAGGTAAGATTATTTCAAAGAGC
CCAGTAAGGAAGACAGAAAATCATTGAAACAAGTGGTAAACCTTCAGAAAACCTTTTGGAGAAAAGCTAG
TCAAGAGGGCCGATCACTCCGAAATAAAGGCAGTGTCTCATCCAGGCCCTTGTGGAGGGATCTACAAA
AGGAAGCGGGTTCTGAGTCCAGAAGAGCTGGAGGACAGACAGAAGAAAAGACAAGAAGCAGCTGCCAAGA
GAAGGAGACTCATAGAGGAGAAGAAGAGGCAAAAGGAAAGAGGCTGAACATAAGAAAAAGATGGCTGGTG
GGAATCCAACAATTACCAGTCTTCTGCCCTGCCCCTCTGAGGAGAGCGAGCCAGAGGACCTTGAGAATGGG
GAAGAGAGCTCTGCTGAGCTGGATTACCAAGACCCAGATGCTACTTCCCTCAAGTACGTTAGTGGTGATG
TCACCCACCCTCAGGCTGGGGCCGAGGATGCTCTCATTGTGCACTGCGTAGATGACTCTGGCCACTGGGG
CAGAGGTGGTTTTTTACAGCTCTGAAAAAGCGATCCGCTGAGCCAAGAAAAATATGAGCTGGCTGGG
AAAATGAAAGACCTGAGTTTGGGAGGTGTCTTTTATTTCTGTTGATGATAAAGAAATCAAGAAAACAAG
GGCAAGATTTGTTGGCCTTGTATTGTGGCTCAGCATCGTGATCGTCCAAATGTCTGTCTGGCATTAAAGT
GGCAGCCCTAGAAGAGGGCCTGAAGAAGATATTTTAGCAGCAAAAAGAAAGAAAGCAAGTGTTCATCTT
CCACGTATTGGACATGCCACGAAAGGTTTTAACTGGTATGGTACTGAGCGACTTATTCGAAACATCTGG
CTGCAAGAGGCATCCCAACTTACATATATTTTCTAGAAGCAAGTCTGCTGTCTTCATGCACAGTC
TTCATCTTCTCCTCAAGACAGCTGGTGCCT

ACGCGTACGCGGCCGCTCGAGCAGAACTCATCTCAGAAGAGGATCTGGCAGCAATGATATCTGGATT
ACAAGGATGACGACGATAAGGTTTAA

Protein Sequence:

>RC223499 representing NM_004284
 Red=Cloning site Green=Tags(s)

```
MERAGATSRGGQAPGFLRLHTEGRAEAARVQEQLRQWGLTGIHLRSYQLEGVNWL AQRFHQCNGCILG
DEMGLGKTCQTIALFIYLAGRLNDEGPFLILCPLSVLSNWKEEMQRFAPGLSCVITYAGDKEERAQLQQDL
KQESRFHVLLTTYEICKDASFLKSPWSVLVDEAHLKNQSSLLHKTLSFSSVVFSLLLTGTPIQNSL
QELYSLLSFVEPDLFSKEEVGDFIQRYQDIEKESESASELHKLKLPFLRRVKAEVATELPPKKEVVIYH
GMSALQKYYKAILMKDLDAFENETAKKVKLQNILSQLRKCVDHPYLFDGVEPEPFVEVDHLTEASGKLH
LLDKLLAFLYSGGHRVLLFSQMTQMLDILQDYMDYRGYSYERVDGQSVRGEERHLAIKNFGQQPIFVFLLS
TRAGGVGMNLTAADTVIFVDSDFNPQNDLQAAARAHRIQNKSVKVIIRLIGRDTVEEIVYRKAASKLQLT
NMIIEGGHFTLGAQKPAADADLQLSEILKFGLDKLLASEGSTMDEIDLESILGETKDGQWVSDALPAAEG
GSRDQEEGKNHMYLFEGKDYSKEPSKEDRKSFEQLVNLQKTLLEKASQEGRSLRNKGSVLIPLVEGSTK
RKRVLSPPELEDROKQRQEAARRRRLIEEKQRQEEAEHKKKMAWWSNNYQSFCLPSESESEPEDLENG
EESSAELDYQDPDATSLKYVSGDVTHPQAGAEDALIVHCVDDSGHWGRGGLFTALEKRSAPRKIYELAG
KMKDLSLGGVLLFPVDDKESRNKGQDLLALIVAQHRDRSNVLSGIKMAALEEGLKKIFLAAKKKKASVHL
PRIGHATKGFNWTGTERLIRKHLAARGIPTIYIYFPRSKSAVLHAQSSSSSRQLVP
```

TRTRPLEQKLI SEEDLAANDILDYKDDDDKV

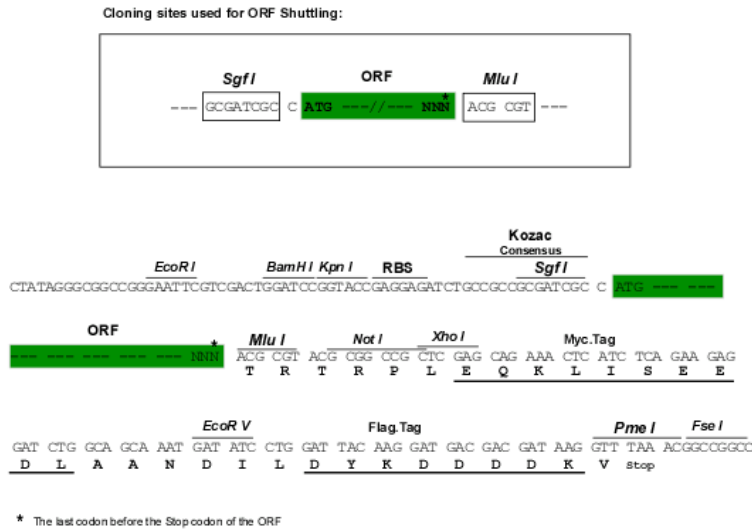
Chromatograms:

https://cdn.origene.com/chromatograms/mg4041_e01.zip

Restriction Sites:

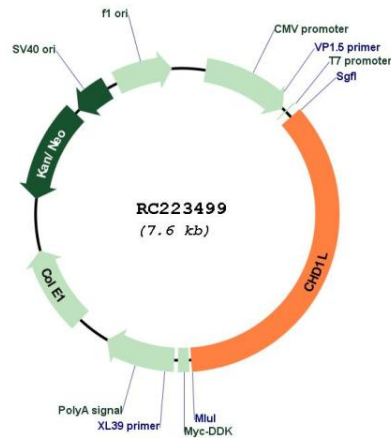
SgfI-MluI

Cloning Scheme:

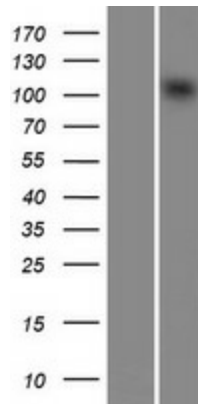


ACCN:	NM_004284
ORF Size:	2691 bp
OTI Disclaimer:	The molecular sequence of this clone aligns with the gene accession number as a point of reference only. However, individual transcript sequences of the same gene can differ through naturally occurring variations (e.g. polymorphisms), each with its own valid existence. This clone is substantially in agreement with the reference, but a complete review of all prevailing variants is recommended prior to use. More info
OTI Annotation:	This clone was engineered to express the complete ORF with an expression tag. Expression varies depending on the nature of the gene.
Components:	The ORF clone is ion-exchange column purified and shipped in a 2D barcoded Matrix tube containing 10ug of transfection-ready, dried plasmid DNA (reconstitute with 100 ul of water).
Reconstitution Method:	<ol style="list-style-type: none">1. Centrifuge at 5,000xg for 5min.2. Carefully open the tube and add 100ul of sterile water to dissolve the DNA.3. Close the tube and incubate for 10 minutes at room temperature.4. Briefly vortex the tube and then do a quick spin (less than 5000xg) to concentrate the liquid at the bottom.5. Store the suspended plasmid at -20°C. The DNA is stable for at least one year from date of shipping when stored at -20°C.
Note:	Plasmids are not sterile. For experiments where strict sterility is required, filtration with 0.22um filter is required.
RefSeq:	NM_004284.3 , NP_004275.3
RefSeq Size:	3023 bp
RefSeq ORF:	2694 bp
Locus ID:	9557
UniProt ID:	Q86WJ1
Cytogenetics:	1q21.1
Domains:	SNF2_N, DEAD
MW:	100.8 kDa
Gene Summary:	This gene encodes a DNA helicase protein involved in DNA repair. The protein converts ATP to add poly(ADP-ribose) as it regulates chromatin relaxation following DNA damage. Overexpression of this gene has been linked to several types of cancers. [provided by RefSeq, Feb 2017]

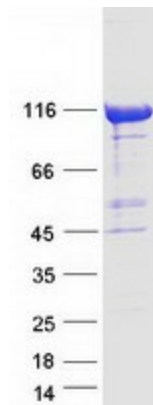
Product images:



Circular map for RC223499



Western blot validation of overexpression lysate (Cat# [LY418100]) using anti-DDK antibody (Cat# [TA50011-100]). Left: Cell lysates from un-transfected HEK293T cells; Right: Cell lysates from HEK293T cells transfected with RC223499 using transfection reagent MegaTran 2.0 (Cat# [TT210002]).



Coomassie blue staining of purified CHD1L protein (Cat# [TP323499]). The protein was produced from HEK293T cells transfected with CHD1L cDNA clone (Cat# RC223499) using MegaTran 2.0 (Cat# [TT210002]).