

Product datasheet for **RC223483**

PXK (NM_017771) Human Tagged ORF Clone

Product data:

Product Type:	Expression Plasmids
Product Name:	PXK (NM_017771) Human Tagged ORF Clone
Tag:	Myc-DDK
Symbol:	PXK
Synonyms:	MONAKA; SLOB
Mammalian Cell Selection:	Neomycin
Vector:	pCMV6-Entry (PS100001)
E. coli Selection:	Kanamycin (25 ug/mL)



[View online »](#)

ORF Nucleotide Sequence:

>RC223483 representing NM_017771
 Red=Cloning site Blue=ORF Green=Tags(s)

TTTTGTAATACGACTCACTATAGGGCGGCCGGAATTCGTCGACTGGATCCGGTACCGAGGAGATCTGCC
 GCC**CGCATCGCC**

ATGGCCTTCATGGAGAAGCCGCCAGCCGGCAAGGTGCTGCTGGACGACACGGTGCCGCTGACAGCAGCCA
 TCGAGGCGAGCCAGAGCCTGCAGTCCCACACGGAATATATTATTCGAGTGCAAAGAGGAATTTCTGTGGA
 AAACAGCTGGCAGATTGTTAGAAGATACAGTGACTTTGATTTGCTTAACAACAGCTTACAGATTGCAGGC
 CTAAGTCTACCTCTTCTCCAAAAAATTGATTGGTAACATGGATCGTGAATTCATAGCTGAAAGGCAGA
 AAGGTCTTCAGAACTATCTCAACGTGATCAACAACATCATCTTGTCTAATTGTGAGCTGGTTAAGAA
 GTTTTTAGATCCAACTACTTCCGCAAACTATACTGAGATTGCCTGCAACAGTTTCCATGTTCTTC
 CGATCAGAACAAAGTGGGAGGTGGTGAACCTTTGAAAGACATAGGTTGGAGAATAAGGAAGAAATATT
 TCTTGATGAAGATTAATAATCAGCCAAAGAACGGCTAGTGTAAAGCTGGGCTGACCTGGCCAGACAA
 GTATTTGTCAGATAAAGATTTTTCAGTGTCTAATCAAACCTCTGCCTTCTGTTTGCACCTTACATCTAT
 CCGGTTACCTTTGCCACAGCTAATGAATCCTCAGCGTTGCTAATTAGGATGTTTAAAGAAAGGGAACAT
 TGAAGGATCTGATCTACAAGGCAAAACAAAAGACCCATTTCTAAAGAAGTACTGCAACCCCTAAGAAGAT
 TCAGGGCCTGGAACCTCCAGCAAAATAAAACATATGGACGGCAAAATATTAGAGGACTGAAGTTTCTTCAT
 GACAAGGGATTCCCTTATGGGCATCTTCACGCCTCCAATGTGTGCTCGATGGGGACACTTGCAGGCTGC
 TGGACCTTGAGAATTCCTTATGGGCTGCCTTCTTCTACCGATCTATTTTTCAAAATCAGGAAAAAT
 CAATACATTGAAAGTGTGGATGCCACTGCTTGGCCACTTACTGTATGAAATGACTTATGGACGACCG
 CCAGACTCGGTGCCTGTGGACTCCTTCCCTCCTGCCCGTCCATGGCTGTGGTGGCCGTGTGGAGTCTA
 CGCTGTCTTGTGAAGCCTGTAAAAATGGCATGCCTACCATCTCCCGCTTACAGATGCCATTTCAG
 CGATGTTTTACTAACCACTTCTGAAAAACACAGTTTAAAGATCCCTACAAGTTAAAGAGGCATTGAGA
 ATTGCCAAAGAATGTATAGAGAAGAGACTAATTGAGGAACAGAAACAGATTACACAGCATCGAAGACTGA
 CAAGAGCTCAGTCCCACCATGGATCTGAGGAGGAAAGAAAAAAGAAAGATTTAGCTCGAAAAGAGTC
 AAAACGATCTGCTCTTGAATAAGTGAAGAGCATTACAGCAAGTACAGCAACTCCAATAATTCAGGATCT
 GGGGCCAGCTCACCTCTCAGTCCCGTCATCGCCAACTCCACCTCTACATCAGGGATATCTGCATTAC
 CTCCACCTCTCCACCTCCACCACCAGCAGCTCCCTTGCCTCCTGCGAGCACCGAGGCACCTGCCCA
 GCTCTCGTCTCAGGCTGTGAATGGCATGAGCCGAGGGCCTTGTCTCAGCTCCATCCAGAATTTCCAAAA
 GGAACCTTGGAGAAAGCCAAAACCTGTGATCACAGTGCTCGAAGATCGGC

ACGCGTACGCGGCGCTCGAGCAGAACTCATCTCAGAAGAGGATCTGGCAGCAAATGATATCCTGGATT
 ACAAGGATGACGACGATAAGGTTTAA

Protein Sequence:

>RC223483 representing NM_017771
 Red=Cloning site Green=Tags(s)

MAFMEKPPAGKVLLDDTVPLTAAIEASQSLQSHTYIIRVQRGISVENSQIVRRYSDFLLNNSLQIAG
 LSLPLPPKKLIGNMDREFIAERQKGLQNYLNVITTNHILSNCELVKFLDPNNYSANYTEIALQQVSMFF
 RSEPKWEVVEPLKDIGWRIRKKYFLMKIKNQPKERLVSWADLGPDKYLSKDFQCLIKLLPSCLHPYIY
 RVTFATANESSALLIRMFNEKGLKDLIYKAKPKDPFLKCYCNPKKIQGLELQQIKTYGRQILEVLKFLH
 DKGFYPYHLHASNVMLDGDTCRLLDLENSLLGLPSFYRSYFSQFRKINTLESVDVHCFGHLLYEMTYGRP
 PDSVPVDSFPPAPSMVAVVLESTLSCEACKNGMPTISRLLQMPFLSDVLLTTSEKPFQIPTKLKEALR
 IAKECIEKRLIEEQQIHQHRRLTRAQSHHGSEERKKRILARKKSKRSALENSEEHSKYSNSNNSGS
 GASSPLTSPSSPTPPSTSGISALPPPPPPPPAAPLPPASTEAPAQLSSQAVNGMSRGALLSSIQNFQK
 GTLRKAKTCDHSAPKIG

TRTRPLEQKLISEEDLAANDILDYKDDDDKV

Chromatograms:

https://cdn.origene.com/chromatograms/mk6491_e12.zip

Restriction Sites:

Sgfl-Mlul

Cloning Scheme:

ACCN: NM_017771

ORF Size: 1731 bp

OTI Disclaimer: The molecular sequence of this clone aligns with the gene accession number as a point of reference only. However, individual transcript sequences of the same gene can differ through naturally occurring variations (e.g. polymorphisms), each with its own valid existence. This clone is substantially in agreement with the reference, but a complete review of all prevailing variants is recommended prior to use. [More info](#)

OTI Annotation: This clone was engineered to express the complete ORF with an expression tag. Expression varies depending on the nature of the gene.

Components: The ORF clone is ion-exchange column purified and shipped in a 2D barcoded Matrix tube containing 10ug of transfection-ready, dried plasmid DNA (reconstitute with 100 ul of water).

Reconstitution Method:

1. Centrifuge at 5,000xg for 5min.
2. Carefully open the tube and add 100ul of sterile water to dissolve the DNA.
3. Close the tube and incubate for 10 minutes at room temperature.
4. Briefly vortex the tube and then do a quick spin (less than 5000xg) to concentrate the liquid at the bottom.
5. Store the suspended plasmid at -20°C. The DNA is stable for at least one year from date of shipping when stored at -20°C.

RefSeq: [NM_017771.5](#)
RefSeq Size: 2050 bp

RefSeq ORF: 1737 bp

Locus ID: 54899

UniProt ID: [Q7Z7A4](#)
Cytogenetics: 3p14.3

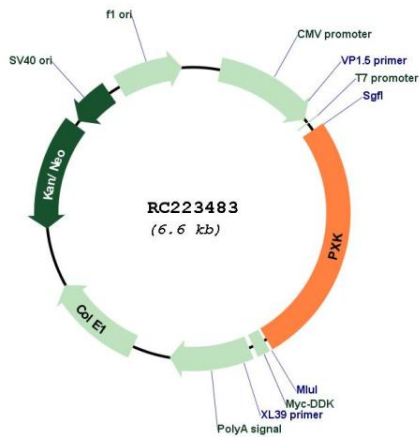
Domains: pkinase, PX

Protein Families: Druggable Genome, Protein Kinase

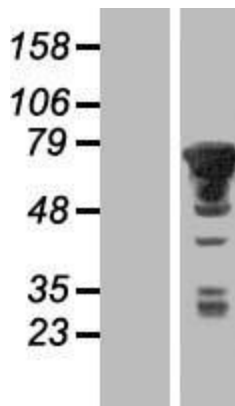
MW: 64.8 kDa

Gene Summary: This gene encodes a phox (PX) domain-containing protein which may be involved in synaptic transmission and the ligand-induced internalization and degradation of epidermal growth factors. Variations in this gene may be associated with susceptibility to systemic lupus erythematosus (SLE). Alternative splicing results in multiple transcript variants. [provided by RefSeq, Jan 2014]

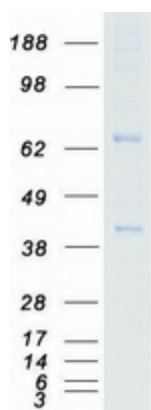
Product images:



Circular map for RC223483



Western blot validation of overexpression lysate (Cat# [LY413544]) using anti-DDK antibody (Cat# [TA50011-100]). Left: Cell lysates from untransfected HEK293T cells; Right: Cell lysates from HEK293T cells transfected with RC223483 using transfection reagent MegaTran 2.0 (Cat# [TT210002]).



Coomassie blue staining of purified PXK protein (Cat# [TP323483]). The protein was produced from HEK293T cells transfected with PXK cDNA clone (Cat# RC223483) using MegaTran 2.0 (Cat# [TT210002]).