

## Product datasheet for **RC223471**

### Host cell factor C1 regulator 1 (HCFC1R1) (NM\_001002017) Human Tagged ORF Clone

#### Product data:

**Product Type:** Expression Plasmids  
**Product Name:** Host cell factor C1 regulator 1 (HCFC1R1) (NM\_001002017) Human Tagged ORF Clone  
**Tag:** Myc-DDK  
**Symbol:** Host cell factor C1 regulator 1  
**Synonyms:** HPIP  
**Mammalian Cell Selection:** Neomycin  
**Vector:** pCMV6-Entry (PS100001)  
**E. coli Selection:** Kanamycin (25 ug/mL)  
**ORF Nucleotide Sequence:** >RC223471 ORF sequence  
**Red=Cloning site Blue=ORF Green=Tags(s)**

TTTTGTAATACGACTCACTATAGGGCGGCCGGAATTCGTCGACTGGATCCGGTACCGAGGAGATCTGCC  
GCC**CGATCGCC**

ATGATCCTGCAGCAGCCCTTGCAGCGAGGCCCCAGGGAGGGGCCAGCGCCTCCCGGGGCCGCTTGG  
GGGTGACTTGGGCTGGACGCCAGGGAGCCTCTGCGCAAGCAGTTTCTGTCTGAGGAGAACATGGCCAC  
CCACTTCTCAACTCAGCCTGCACAATGACCACCCTACTGCAGCCCCCATGACCTTCTCCCCAGCC  
CTGCCCAACTCAGGAGCCCTTGCTCTGAGCTGCTTCTCTGGCGTATCCTGGCAGCCTCATCCCTGAGG  
CCCTCCGTCTGCTGAGGCTGGGGACACCCCACTCCCCCTACCCTGCAACCCAGCTGGGGACATAAT  
GGAGCTC

**ACGCGT**ACGCGGCCGCTCGAGCAGAACTCATCTCAGAAGAGGATCTGGCAGCAAATGATATCCTGGATT  
ACAAGGATGACGACGATAAGGTTTAA

**Protein Sequence:** >RC223471 protein sequence  
**Red=Cloning site Green=Tags(s)**

MILQQPLQRGPQGAQRLPRAALGVTWGLDAREPLRKQFLSEENMATHFSQLSLHNDHPYCSPMTFSPA  
LPQLRSPCSELLLRYPGSLIPEALRLLRLGDTSPPPYPATPAGDIMEL

**TRTRPLEQKLI**SEEDLAANDILDYKDDDDKV

**Chromatograms:** [https://cdn.origene.com/chromatograms/mk6454\\_f04.zip](https://cdn.origene.com/chromatograms/mk6454_f04.zip)

**Restriction Sites:** SgfI-MluI



[View online »](#)

**Cloning Scheme:**


**ACCN:** NM\_001002017

**ORF Size:** 357 bp

**OTI Disclaimer:** The molecular sequence of this clone aligns with the gene accession number as a point of reference only. However, individual transcript sequences of the same gene can differ through naturally occurring variations (e.g. polymorphisms), each with its own valid existence. This clone is substantially in agreement with the reference, but a complete review of all prevailing variants is recommended prior to use. [More info](#)

**OTI Annotation:** This clone was engineered to express the complete ORF with an expression tag. Expression varies depending on the nature of the gene.

**Components:** The ORF clone is ion-exchange column purified and shipped in a 2D barcoded Matrix tube containing 10ug of transfection-ready, dried plasmid DNA (reconstitute with 100 ul of water).

**Reconstitution Method:**

1. Centrifuge at 5,000xg for 5min.
2. Carefully open the tube and add 100ul of sterile water to dissolve the DNA.
3. Close the tube and incubate for 10 minutes at room temperature.
4. Briefly vortex the tube and then do a quick spin (less than 5000xg) to concentrate the liquid at the bottom.
5. Store the suspended plasmid at -20°C. The DNA is stable for at least one year from date of shipping when stored at -20°C.

**RefSeq:** [NM\\_001002017.2](#), [NP\\_001002017.1](#)

**RefSeq Size:** 966 bp

**RefSeq ORF:** 360 bp

**Locus ID:** 54985

**UniProt ID:** [Q9NWW0](#)

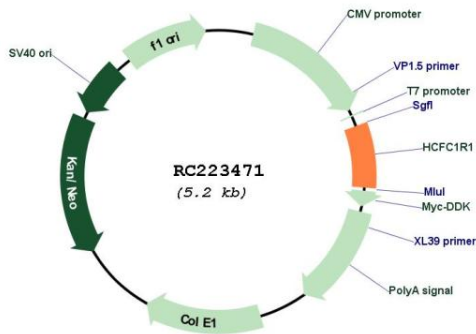
**Cytogenetics:** 16p13.3

**Protein Families:** Druggable Genome

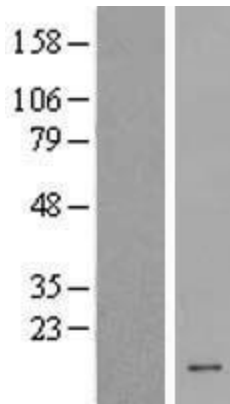
**MW:** 13.2 kDa

**Gene Summary:** Regulates HCFC1 activity by modulating its subcellular localization. Overexpression of HCFC1R1 leads to accumulation of HCFC1 in the cytoplasm. HCFC1R1-mediated export may provide the pool of cytoplasmic HCFC1 required for import of virion-derived VP16 into the nucleus.[UniProtKB/Swiss-Prot Function]

**Product images:**



Circular map for RC223471



Western blot validation of overexpression lysate (Cat# [LY424320]) using anti-DDK antibody (Cat# [TA50011-100]). Left: Cell lysates from untransfected HEK293T cells; Right: Cell lysates from HEK293T cells transfected with RC223471 using transfection reagent MegaTran 2.0 (Cat# [TT210002]).