

## Product datasheet for RC223470

### Nogo A (RTN4) (NM\_020532) Human Tagged ORF Clone

#### Product data:

|                           |  |
|---------------------------|--|
| Product Type:             | Expression Plasmids  |
| Product Name:             | Nogo A (RTN4) (NM_020532) Human Tagged ORF Clone   |
| Tag:                      | Myc-DDK  |
| Symbol:                   | Nogo A   |
| Synonyms:                 | ASY; Nbla00271; Nbla10545; NI220/250; NOGO; NSP; NSP-CL; RTN-X; RTN4-A; RTN4-B1; RTN4-B2; RTN4-C |
| Mammalian Cell Selection: | Neomycin   |
| Vector:                   | pCMV6-Entry (PS100001)   |
| E. coli Selection:        | Kanamycin (25 ug/mL)   |
| ORF Nucleotide Sequence:  | >RC223470 representing NM_020532<br>Red=Cloning site Blue=ORF Green=Tags(s)                      |

TTTTGTAATACGACTCACTATAGGGCGGCCGGAATTCGTCGACTGGATCCGGTACCGAGGAGATCTGCC  
 GCCGCGATCGCC

ATGGAAGACCTGGACCACTCTCTCTGGTCTCGTCTCGGACAGCCACCCCGGCCGAGCCCGCTTCA  
 AGTACCAGTTCTGTAGGGAGCCCGAGGACGAGGAGGAAGAAGAGGAGGAGGAAGAGGAGGACGAGGACGA  
 AGACCTGGAGGAGCTGGAGGTGCTGGAGAGGAAGCCCGCCGCGGCTGTCCGCGCCCACTGCCACCC  
 GCCCCTGCCGCGGCCGCGCCCTGATGGACTTCGGAATGACTTCGTGCCGCGGCCGCCCCGGGACCCC  
 TGCCGGCCGCTCCCCCGTCGCCCCGAGCGGCAGCCGTCTTGGACCCGAGCCCGGTGTCGTCGACCGT  
 GCCCGCGCCATCCCCGCTGTCTGCTGCCGAGTCTCGCCCTCCAAGCTCCCTGAGGACGACGAGCCTCCG  
 GCCCGGCTCCCCCTCTCCCCCGCCAGCGTGAGCCCCAGGCAGAGCCGTGTGACCCCGCCAGCCC  
 CGGCTCCCGCCGCGCCCCCTCCACCCCGCCGCGCCCAAGCGCAGGGGCTCCTCGGGCTCAGTGGATGA  
 GACCCCTTTTGTCTTCTGCTGCATCTGAGCCTGTGATACGCTCCTCTGCAGAAATATGGAATGAAG  
 GAGCAGCCAGGTAACACTATTTCCGCTGGTCAAGAGGATTTCCCATCTGTCTGCTTGAAGTGTGCTT  
 CTCTTCTTCTGTCTCTCTCTCAGCCGCTTTTCAAAGAACATGAATACCTTGGTAATTTGTCAAC  
 AGTATTACCCACTGAAGGAACACTTCAAGAAATGTCAAGTGAAGCTTCTAAAGAGGTCTCAGAGAAGGCA  
 AAACTCTACTCATAGATAGAGATTTAACAGAGTTTTTCAAGATTAGAATACTCAGAAATGGGATCATCGT  
 TCAGTGTCTCTCCAAAAGCAGAACTGCGGTAATAGTAGCAATCCTAGGGAAGAAATATCGTGAAAAA  
 TAAAGTAGAAGAAGAGAAGTTAGTTAGTAATAACATCCTCATAATCAACAAGAGTTACCTACAGCTCTT  
 ACTAAATTGGTTAAAGAGGATGAAGTTGTGCTTTCAGAAAAAGCAAAGACAGTTTTAATGAAAAGAGAG  
 TTGCAAGTGAAGCTCCTATGAGGAGGAATATGCAGACTTCAAACCATTTGAGCGAGTATGGGAAGTGAA  
 AGATAGTAAGGAAGATAGTGATATGTTGGCTGCTGGAGGTAAAATCGAGAGCAACTTGGAAAGTAAAGTG  
 GATAAAAAATGTTTTGCAGATAGCCTTGAAGCAACTAATCACGAAAAAGATAGTGAGAGTAGTAATGATG  
 ATACTTCTTCCCAGTACGCCAGAAGGTATAAGGATCGTTCAGGAGCATATACATGTGCTCCCTT


[View online »](#)

TAACCCAGCAGCAACTGAGAGCATTGCAACAAACATTTTTCTTTGTTAGGAGATCCTACTTCAGAAAAAT  
AAGACCGATGAAAAAAAAATAGAAGAAAAGAAGGCCCAATAGTAACAGAGAAGAATACTAGCACCAAAA  
CATCAAACCCTTTTCTTGTAGCAGCACAGGATTCTGAGACAGATTATGTCACAACAGATAATTTAACAAA  
GGTGACTGAGGAAGTCGTGGCAAACATGCCTGAAGGCCTGACTCCAGATTTAGTACAGGAAGCATGTGAA  
AGTGAATTGAATGAAGTTACTGGTACAAAGATTGCTTATGAAACAAAAATGGACTTGGTTCAAACATCAG  
AAGTTATGCAAGAGTCACTCTATCCTGCAGCACAGCTTTGCCATCATTTGAAGAGTCAGAAGCTACTCC  
TTCACCACTTTTGCCTGACATTGTTATGGAAGCACCATTTGAATTCTGCAGTTCTAGTGGTGGTCTCC  
GTGATACAGCCAGCTCATCACCATTAGAAGCTTCTTCAGTTAATTATGAAAGCATAAAACATGAGCCTG  
AAAACCCCCCACCATATGAAGAGGCCATGAGTGTATCACTAAAAAAGTATCAGGAATAAAGGAAGAAAT  
TAAAGAGCCTGAAAAATTAATGCAGCTCTTCAAGAAACAGAAGCTCCTTATATATCTATTGCATGTGAT  
TTAATTAAGAAACAAAGCTTTCTGCTGAACAGCTCCGATTCTCTGATTATTCAGAAATGGCAAAAG  
TTGAACAGCCAGTGCCTGATCATTCTGAGCTAGTTGAAGATTCTCACCTGATTCTGAACCAAGTTGACTT  
ATTTAGTGATGATTCAATACCTGACGTTCCACAAAAACAAGATGAACTGTGATGCTTGTAAAGAAAGT  
CTCACTGAGACTTCATTTGAGTCAATGATAGAATATGAAATAAGGAAAAACTCAGTGCTTTGCCACCTG  
AGGGAGGAAAGCCATATTTGGAATCTTTAAGCTCAGTTAGATAACACAAAAGATACCTGTTACCTGA  
TGAAGTTTCAACATTGAGCAAAAAGGAGAAAAATTCCTTTGCAGATGGAGGAGCTCAGTACTGCAGTTTAT  
TCAATATGATGACTTATTTATTTCTAAGGAAGCACAGATAAGAGAACTGAAACGTTTTTCAGATTCATCTC  
CAATTGAAATTATAGATGAGTTCCTACATTGATCAGTTCTAAAAGTATTCATTTTCTAAATTAGCCAG  
GGAATATACTGACCTAGAAGTATCCCAAAAAGTGAATGCTAATGCCCGGATGGAGCTGGGTCAATG  
CCTTGACAGAAATTGCCCCATGACCTTTCTTTGAAGAACATAACCCAAAGTTGAAGAGAAAAATCAGTT  
TCTCAGATGACTTTTCTAAAAATGGGTCTGCTACATCAAAGGTGCTCTTATTGCCTCCAGATGTTTCTGC  
TTTGGCCACTCAAGCAGAGATAGAGAGCATAGTTAAACCCAAAGTTCTTGTGAAAGAAGCTGAGAAAAAA  
CTTCCTTCCGATACAGAAAAAGAGGACAGATCACCATCTGCTATATTTTCAGCAGAGCTGAGTAAACTT  
CAGTTGTTGACCTCCTGTACTGGAGAGACATTAAGAAGACTGGAGTGGTGTGTTGGTGCCAGCCTATTCTC  
GCTGCTTTCATTGACAGTATTCAGCATTGTGAGCGTAACAGCCTACATTGCCTTGCCCTGCTCTCTGTG  
ACCATCAGCTTTAGGATATACAAGGGTGTGATCCAAGCTATCCAGAAATCAGATGAAGGCCACCCATTCA  
GGGCATATCTGGAATCTGAAGTTGCTATATCTGAGGAGTTGGTTCAGAAGTACAGTAATTCTGCTCTTGG  
TCATGTGAAGTGCACGATAAAGGAACTCAGGCGCCTCTTCTAGTTGATGATTTAGTTGATTCTCTGAAG  
TTTGCAGTGTGATGTGGGTATTTACCTATGTTGGTGCCTTGTAAATGGTCTGACACTACTGATTTTGG  
CTCTCATTTCACTCTTCAGTGTTCTGTTATTTATGAACGGCATCAGGCACAGATAGATCATTATCTAGG  
ACTTGCAATAAGAATGTTAAAGATGCTATGGCTAAAATCCAAGCAAAAATCCCTGGATTGAAGCGCAAA  
GCTGAA

ACGCGTACGCGGCGGCTCGAGCAGAACTCATCTCAGAAGAGGATCTGGCAGCAAATGATATCCTGGATT  
ACAAGGATGACGACGATAAGGTTTAA

Protein Sequence: >RC223470 representing NM\_020532  
Red=Cloning site Green=Tags(s)

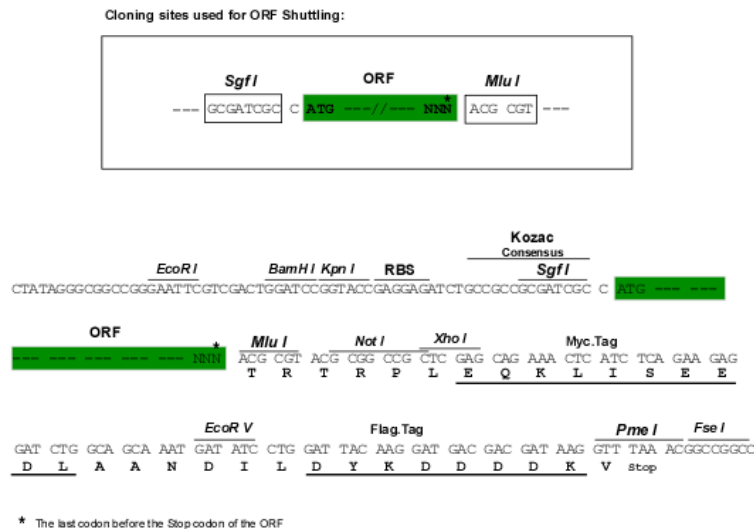
MEDLDQSPLVSSSDSPRPQPAFKYQFVREPEDEEEEEEEEEDEDEDELEELVLERKPAAGLSAAPVPT  
APAAGAPLMDFGNDFVPPAPRGPLPAAPPVAPERQPSWDSPSVSSTVPAPSPLSAAAVSPSKLPEDDEPP  
ARPPPPPPASVSPQAEPVWTPPAPAPAAPPSTPAAPKRRGSSGSVDETLFALPAASEPVIRSSAENMDLK  
EQPGNTISAGQEDFPSVLLETAASLPSLSPLSAASFKEHEYLGNLSTVLPTTEGLQENVSEASKEVSEKA  
KTLIDRLDTEFSELEYSEMGSFVSPKAESAVIVANPREEIIIVKNKDEEEKLVSNILHNQQLPTAL  
TKLVKEDEVSSSEKAKDSFNEKRVAVEAPMREEYADFKPFERVWEVKDSKEDSDMLAAGGKIESNLESKV  
DKKCFADSLEQTNHEKDESSNDDTSFPSTPEGIKDRSGAYITCAPFNPAAATESIATNIFLLGDPTSEN  
KTDEKKIEEKKAIQVTEKNTSTKTSNPFLVAAQDSETDYVTTDNLTKVTEEVVANMPEGLTPDLVQEACE  
SELNEVTGKIAIYETKMDLVQTSVMQESLYPAAQLCPSFEESEATPSVLPDIVMEAPLNSAVPSAGAS  
VIQSSSSPLEASSVNYESIKHEPENPPPYEEAMSVSLKKVSGIKKEEIKEPENINAALQETEAPYISIAACD  
LIKETKLSAEPAPDFSDYSEMAKVEQVPDHSSELVEDSSPDSEPVDLFSDSIPDVPQKQDETVMVKES  
LTETSFESMIEYENKEKLSALPPEGKPYLESFKLSLDNTKDTLLPDEVSTLSKKEKIPLQMEELSTAVY  
SNDDLFISKEAQIRETETFSDSSPIEIIIDEFTLISSTKDSFSKLAREYTDLEVSHKSEIANAPDGAGSL  
PCTELPHDLSLKNIQPKVEEKISFSDDFSKNGSATSKVLLLPDVSALATQAEIESIVKPKVLVKEAEKK  
LPSDTEKEDRSPSAIFSAELSKTSVVDLLYWRDIKKTGVVFGASLFLLLSLTVFSIVSVTAYIALALLSV  
TISFRIYKGVIIQKSDGHPFRAYLESEVAISEELVQKYSNSALGHVNCTIKELRRLFLVDDLVDLSLK  
FAVLMWVFTYVGALFNGLTLLILALISLFSVPVIYERHQAQIDHYLGLANKNVKDAMAKIAQKIPGLKRRK  
AE

TRTRPLEQKLISEEDLAANDILDYKDDDDKV

Chromatograms: [https://cdn.origene.com/chromatograms/mg3462\\_d04.zip](https://cdn.origene.com/chromatograms/mg3462_d04.zip)

Restriction Sites: SgfI-MluI

Cloning Scheme:

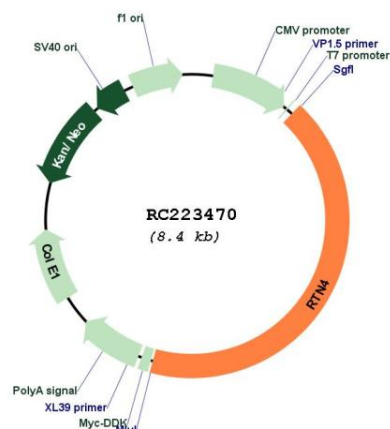


ACCN: NM\_020532

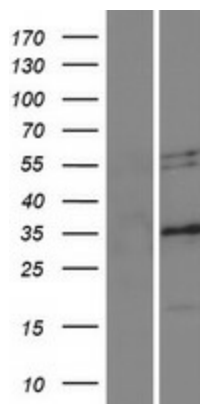
ORF Size: 3576 bp

|                               |  |
|-------------------------------|--|
| <b>OTI Disclaimer:</b>        | The molecular sequence of this clone aligns with the gene accession number as a point of reference only. However, individual transcript sequences of the same gene can differ through naturally occurring variations (e.g. polymorphisms), each with its own valid existence. This clone is substantially in agreement with the reference, but a complete review of all prevailing variants is recommended prior to use. <a href="#">More info</a>   |
| <b>OTI Annotation:</b>        | This clone was engineered to express the complete ORF with an expression tag. Expression varies depending on the nature of the gene.   |
| <b>Components:</b>            | The ORF clone is ion-exchange column purified and shipped in a 2D barcoded Matrix tube containing 10ug of transfection-ready, dried plasmid DNA (reconstitute with 100 ul of water).   |
| <b>Reconstitution Method:</b> | <ol style="list-style-type: none"> <li>1. Centrifuge at 5,000xg for 5min.</li> <li>2. Carefully open the tube and add 100ul of sterile water to dissolve the DNA.</li> <li>3. Close the tube and incubate for 10 minutes at room temperature.</li> <li>4. Briefly vortex the tube and then do a quick spin (less than 5000xg) to concentrate the liquid at the bottom.</li> <li>5. Store the suspended plasmid at -20°C. The DNA is stable for at least one year from date of shipping when stored at -20°C.</li> </ol>  |
| <b>RefSeq:</b>                | <a href="#">NM_020532.5</a>  |
| <b>RefSeq Size:</b>           | 4871 bp  |
| <b>RefSeq ORF:</b>            | 3579 bp  |
| <b>Locus ID:</b>              | 57142  |
| <b>UniProt ID:</b>            | <a href="#">Q9NQC3</a>   |
| <b>Cytogenetics:</b>          | 2p16.1   |
| <b>Domains:</b>               | Reticulon  |
| <b>Protein Families:</b>      | Transmembrane  |
| <b>MW:</b>                    | 129.8 kDa  |
| <b>Gene Summary:</b>          | <p>This gene belongs to the family of reticulon encoding genes. Reticulons are associated with the endoplasmic reticulum, and are involved in neuroendocrine secretion or in membrane trafficking in neuroendocrine cells. The product of this gene is a potent neurite outgrowth inhibitor which may also help block the regeneration of the central nervous system in higher vertebrates. Alternatively spliced transcript variants derived both from differential splicing and differential promoter usage and encoding different isoforms have been identified. [provided by RefSeq, Jul 2008]</p> |

## Product images:



Circular map for RC223470



Western blot validation of overexpression lysate (Cat# [LY412411]) using anti-DDK antibody (Cat# [TA50011-100]). Left: Cell lysates from untransfected HEK293T cells; Right: Cell lysates from HEK293T cells transfected with RC223470 using transfection reagent MegaTran 2.0 (Cat# [TT210002]).