

Product datasheet for **RC223465**

CHSY3 (NM_175856) Human Tagged ORF Clone

Product data:

Product Type:	Expression Plasmids
Product Name:	CHSY3 (NM_175856) Human Tagged ORF Clone
Tag:	Myc-DDK
Symbol:	CHSY3
Synonyms:	CHSY2; CSS3
Mammalian Cell Selection:	Neomycin
Vector:	pCMV6-Entry (PS100001)
E. coli Selection:	Kanamycin (25 ug/mL)



[View online »](#)

ORF Nucleotide Sequence:

>RC223465 representing NM_175856
 Red=Cloning site Blue=ORF Green=Tags(s)

TTTTGTAATACGACTCACTATAGGGCGGCCGGGAATTCGTCGACTGGATCCGGTACCGAGGAGATCTGCC
 GCC**CGGATCGCC**

ATGGCTGTGCGCTCTCGCCGCCCGTGGATGAGCGTGGCATTAGGGCTGGTCTGGGCTTACCCGCCGCT
 CCTGGCTCATCGCCCCAGGGTGGCGGAGCTGAGCGAGAGGAAGAGACGTGGCTCCAGCCTCTGCTCCTA
 CTACGGTCGCTCTGCTGTGGCCCCCGCCGGCGCTCAGCAGCCGCTCCCCAGCCCCAGTCCCGACCA
 CGGCAGGAGCAGTCGCCGCCCGCGCCAGGATCTCCAGGGGCCACCGCTGCCCGAGGCAGCACCCG
 GGATCACAGTTTTGAAGCAGCCCTGGCAGCAGCCACCTCCGCTGCAGCAGCGCGCGGAGGACGCGA
 GCCTGAGGGCGCAGCGGGCTTCCCGTGTCCAGCGCCGAGGGGAGCCCGAGGAGGAGCGGGGGC
 GCGGCTGGCAGCGGAGAGACGGCCGGCGGGGAGTAGCCACAACGGCAGCGGGACGGGGCGCTGCCG
 CCCCAGCGCCCCACCCGGGACTTCTGTACGTGGGGTGTGACCGCGCAGAAGTACCTGGGCAGCCG
 CGCGCTGGCCGCGCAGCGGACCTGGGCGGTTTCCATCCCGGGCCGCTGGAGTTCTTTCCAGCCAGCAG
 CCCCCAACGCCGCCAGCCCCGCCACCCTGCCTGTATCGCGCTACCGGGTGTGGACGACTCCTATC
 CTCCCCAGAAAAAGTCTTCATGATGATCAAGTACATGCACGACCACTACCTGGACAAGTATGAGTGGT
 CATGCGCGCCGACGACGATGTCTACATCAAAGGTGATAAATTAGAAGAGTTTCTTAGATCGCTAAACAGC
 AGTAAGCCTCTCTACCTGGGACAGACTGGCCTGGGGAATATTGAAGAGCTTGAAAGCTGGGACTGGAGC
 CTGGGGAAAACTTCTGTATGGGAGGACCTGGCATGATCTTTAGCCGAGAAGTTCTCAGGAGGATGGTGCC
 ACATATTGGTGAATGCCTTAGAGAAATGTACACGACTCATGAGGATGTGGAAGTAGGAAGATGCGTTCCG
 CGTTTTGGTGGGACTCAGTGTGTCTGGTCTTACGAGATGCAACAACCTGTTCCATGAAAATATGAACACA
 ATCGGAAGGGTTACATCCAAGACCTTACAATAGCAAAATCCATGCAGCCATAACACTTATCCCAACAA
 AAGGCCTGCATACCAATACAGGCTGCATAATTACATGCTCAGCCGCAAAATTTCTGAACCTCGCTACCGC
 ACCATCCAGCTCCACAGGAAAGTGCCCTGATGAGCAAGCTCAGTAACACAGAAGTGAGCAAGAGGACC
 AGCAGCTGGGAGTGATACCTTCTTCAACCACTCCAGCCTCGGGAGAGAAATGAAGTATAGAATGGGA
 GTTCTGACAGGGAAGCTTCTATACTCAGCAGCTGAGAACCAGCCCCCTCGACAGAGCCTCAGTAGCATT
 TTAAGAACAGCACTGGATGATACCGTCTACAGGTGATGGAGATGATCAATGAGAATGCCAAGAGCAGAG
 GACGGCTCATTGACTTCAAGGAAATTCAGTATGGCTACCGCAGAGTTAACCCATGCACGGGGTGGAGTA
 CATTTTGGATTTACTCCTTTTACAAAAGACACAAGGGAAGGAACTGACTGTGCCAGTGAGACGTCAT
 GCCTATCTTCAGCAGTTGTTAGCAAGCCTTTCTCAGAGAGACCGAAGAGCTAGATGTCAACAGTCTTG
 TGGAGAGTATAACAGTGAAGTCAAGTCAATCTCCTTTATATCTAATTCTTTAAAGATATTATCTCTTT
 TCAAGGTGCCAAAGAAATGGGAGGGCACAATGAAAAGAAAGTACACATTCCTGTTCTCTCATCGGAAGG
 TATGACATTTTCTTGAGATTCATGGAGAATTTGAAAACATGTGTCTTATCCCAAAGCAGAATGTAAAGT
 TGGTCATTATCCTTTTTCAGTAGGGATTCTGGCCAAGACTCCAGCAAGCATATTGAGCTGATAAAAGGGTA
 CCAGAACAAGTACCCAAAGCAGAAATGACCCTGATCCCAATGAAGGGAGAGTTTTCCAGAGGTCTTGGT
 CTTGAAATGGCTTCTGCCAGTTTGACAATGACACTTTGCTGCTATTTTGTGATGTTGACTTGATCTTCA
 GAGAAGATTTTCTCAACGATGTAGAGACAATACAATTCAGGGACAACAGGTGTACTATCCCATCATCTT
 TAGCCAGTATGACCCAAAGGTAACAACCGGGGAAATCCTCCACTGATGATTACTTCATATTCTCAAAA
 AAGACTGGATTTTGGAGAGACTATGGATATGGCATCACCTGTATTTACAAAAGTATCTTCTAGGTGCAG
 GTGGATTTGATACCTCAATACAAGGCTGGGACTAGAAGATGTAGATCTTACAATAAAGTCATTCTATC
 TGGCTTAAGGCCATTGAGAAGCCAAGAAGTAGGAGTGGTGCATATTTCCATCCAGTTTATTGTGATCCT
 AACTTGGACCCTAAGCAGTATAAGATGTGCTTAGGATCCAAGGCAAGTACTTTCCGCTCAACCATGCAAC
 TGGCTGAACCTGGCTTGAAAAACATTTAGGTGTCAGGTACAATCGAACTCTCTCC

ACGCGTACGCGGCCGCTCGAGCAGAAACTCATCTCAGAAGAGGATCTGGCAGCAATGATATCTGGATT
 ACAAGGATGACGACGATAAGGTTTAA

Protein Sequence: >RC223465 representing NM_175856
 Red=Cloning site Green=Tags(s)

MAVRSRRPWMSVALGLVLGFTAASWLIAPRVAELSERKRRGSSLCSYYGRSAAGPRAGAQQPLPQPQSRP
 RQEQSPPPARQDLQGPPLPEAAPGITFRSSPWQPPPLQRRRGREPEGATGLPGAPAAEGEPEEEDGG
 AAGQRRDGRPGSSHNGSGDGGAAAPSARPRDFLYVGVMTAQKYLGSRALAAQRTWARFIPGRVEFFSSQQ
 PPNAGQPPPLPVIALPGVDDSYPPQKKSFMMIKYMHDHYLDKYEFWMRADDVYIKGDKLEEFRLSLNS
 SKPLYLGQTGLGNIEELGKLGLEPGENFCMGGPMIFSREVLRRMVPHIGECLREMYTTTHEDVEVGRCVR
 RFGGTQCVWSYEMQQLFHENYEHNRKGYIQDLHNSKIHAAITLHPNKRPAQYRHLHNYMLSRKISELRYR
 TIQLHRESALMSKLSNTEVSKEDQQLGVIPSFNHFQPRERNEVIEWEFLTGKLLYSAAENQPPRQSLSSI
 LRTALDDTVLQVMEMINENAKSRGRLIDFKEIQYGYRRVNPMHGVEYILDLLLLYKRHKGRKLTVPVRRH
 AYLQQLFSKPPFFRETEELDVNSLVESINSETQSFISNSLKILSSFQGAKEMGGHNEKKVHILVPLIGR
 YDIFLRFMENFENMCLIPKQNVKLVIIILSRDSGQDSSKHIELIKGYQNKYPKAEMTLIPMKGEFSRGLG
 LEMASAFDNDTLLLFCDVDLIFREDFLQRCRDNTIQGQVYYPPIFSQYDPKVTNGGNPPTDDYFIFSK
 KTGFWRDYGYGITCIYKSDLLGAGGFDTSIQGWLEDDVLYNKVILSGLRPFRSQEVGVVHIFHPVHCDP
 NLDPKQYKMLGSKASTFASTMQLAELWLEKHLGVRYNRTL

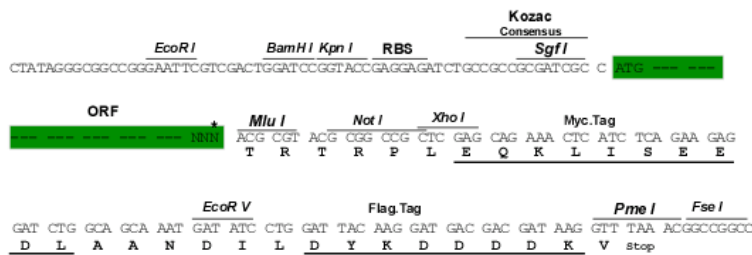
TRTRPLEQKLISEEDLAANDILDYKDDDDKV

Chromatograms: https://cdn.origene.com/chromatograms/mk8013_b10.zip

Restriction Sites: SgfI-MluI

Cloning Scheme:

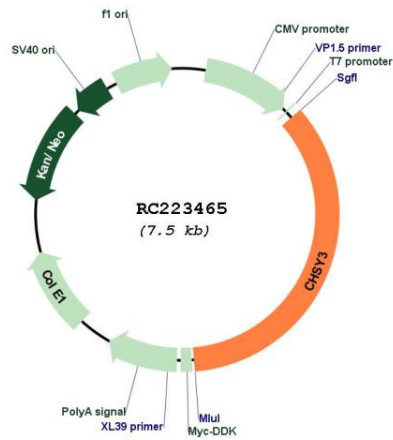
Cloning sites used for ORF Shuttling:



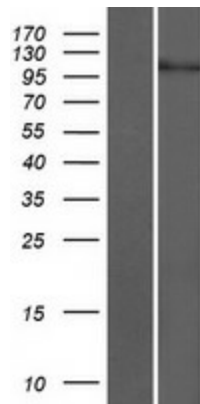
* The last codon before the Stop codon of the ORF

ACCN:	NM_175856
ORF Size:	2646 bp
OTI Disclaimer:	The molecular sequence of this clone aligns with the gene accession number as a point of reference only. However, individual transcript sequences of the same gene can differ through naturally occurring variations (e.g. polymorphisms), each with its own valid existence. This clone is substantially in agreement with the reference, but a complete review of all prevailing variants is recommended prior to use. More info
OTI Annotation:	This clone was engineered to express the complete ORF with an expression tag. Expression varies depending on the nature of the gene.
Components:	The ORF clone is ion-exchange column purified and shipped in a 2D barcoded Matrix tube containing 10ug of transfection-ready, dried plasmid DNA (reconstitute with 100 ul of water).
Reconstitution Method:	<ol style="list-style-type: none">1. Centrifuge at 5,000xg for 5min.2. Carefully open the tube and add 100ul of sterile water to dissolve the DNA.3. Close the tube and incubate for 10 minutes at room temperature.4. Briefly vortex the tube and then do a quick spin (less than 5000xg) to concentrate the liquid at the bottom.5. Store the suspended plasmid at -20°C. The DNA is stable for at least one year from date of shipping when stored at -20°C.
RefSeq:	NM_175856.5
RefSeq Size:	3523 bp
RefSeq ORF:	2649 bp
Locus ID:	337876
UniProt ID:	Q70JA7
Cytogenetics:	5q23.3
Protein Families:	Transmembrane
Protein Pathways:	Chondroitin sulfate biosynthesis, Metabolic pathways
MW:	100.1 kDa
Gene Summary:	CSS3 is a glycosyltransferase that has both glucuronyltransferase and N-acetylgalactosaminyltransferase activities (Yada et al., 2003 [PubMed 12907687]).[supplied by OMIM, Mar 2008]

Product images:



Circular map for RC223465



Western blot validation of overexpression lysate (Cat# [LY406233]) using anti-DDK antibody (Cat# [TA50011-100]). Left: Cell lysates from untransfected HEK293T cells; Right: Cell lysates from HEK293T cells transfected with RC223465 using transfection reagent MegaTran 2.0 (Cat# [TT210002]).