

Product datasheet for **RC223462**

VNN1 (NM_004666) Human Tagged ORF Clone

Product data:

Product Type:	Expression Plasmids
Product Name:	VNN1 (NM_004666) Human Tagged ORF Clone
Tag:	Myc-DDK
Symbol:	VNN1
Synonyms:	HDLCQ8; Tiff66
Mammalian Cell Selection:	Neomycin
Vector:	pCMV6-Entry (PS100001)
E. coli Selection:	Kanamycin (25 ug/mL)



[View online »](#)

ORF Nucleotide Sequence:

>RC223462 representing NM_004666
 Red=Cloning site Blue=ORF Green=Tags(s)

TTTTGTAATACGACTCACTATAGGGCGGCCGGAATTCGTCGACTGGATCCGGTACCGAGGAGATCTGCC
 GCC**CGCATCGCC**

ATGACTACTCAGTTGCCAGCTTACGTGGCAATTTTGTCTTCTATGTCTCAAGAGCCAGCTGCCAGGACA
 CTTTCATTGCAGCTGTTTATGAGCATGCAGCGATATTGCCAATGCCACCCTAACACCAGTGTCTCGTGA
 GGAGGCTTTGGCATTAAATGAATCGGAATCTGGACATTTTGAAGGAGCGATCACATCAGCAGCAGATCAG
 GGTGCGCATATTATTGTGACTCCAGAAGATGCTATTTATGGCTGGAACCTCAACAGGGACTCTCTTACC
 CATATTTGGAGGACATCCAGACCCTGAAGTAACTGGATCCCCTGTAATAATCGTAACAGATTTGGCCA
 GACCCAGTACAAGAAAGACTCAGCTGCCTGGCCAAGAACAACCTATCTATGTTGTGGCAATATTGGG
 GACAAGAAGCCATGCGTACCAGTGATCCTCAGTGTCCCCTGATGGCCGTTACCAATACAACACTGATG
 TGGTATTTGATTCTCAAGGAAAAGTGGTGGCACGCTACCATAAGCAAAACCTTTTCATGGGTGAAAATCA
 ATCAATGTACCAAGGAGCCTGAGATTGTGACTTTCAATACCACCTTTGGAAGTTTTGGCATTTCACA
 TGCTTTGATATACTCTTCCATGATCCTGCTGTTACCTTGGTAAAAGATTTCCACGTGGACACCATAGTAT
 TCCCAACAGCTTGGATGAATGTTTTGCCACATTTGTCAGCTGTTGAATCCACTCAGCTTGGGCTATGGG
 CATGAGGGTCAATTTCTTGCATCCAACATACATTACCCCTCAAAGAAAATGACAGGAAGTGGCATCTAT
 GCACCAATTCTTCAAGAGCATTTCATTATGATATGAAGACAGAAGAGGGAAAACCTCCTCTCGCAAC
 TGGATCCCACCCATCCCATTCTGCAGTGGTGAAGTGGACTTCTATGCCAGCAGTATAGAAGCGCTCTC
 ATCAGGAAAACAAGGAATTTAAAGGCACTGTCTTTTCGATGAATTCATTTTGTGAAGCTCACAGGATG
 CAAATGAAGTGTACGCTCTAGGGCATTGACGGACTGCACACTGTGGAAGGGCGCTATTATCTACAGAT
 TTGTACCCTGTTGAAATGTAACGACTAATTTAAACACTTGCCTGACTCAGCTGAAACAGCTTCTACC
 AGGTTTGAATGTTCTCCCTCAGTGGCACTTTCCGAACCCAGTATGCTTTCTGAGGTGTTGCTGAGTG
 AAAATCAGCTTGCACCTGGAGAATTTCCAGTGTCAACTGACGGACGCTTGTTTAGTCTGAAGCCAACATC
 CGGACCTGTCTTAACAGTAACTCTGTTTGGGAGTTGTATGAGAAGGACTGGGCATCAAATGCTTCATCA
 GGCCTCACAGCACAAGCAAGAATAATAATGCTAATAGTTATAGCACCTATTGTATGCTCATTAAAGTTGG

ACGCGTACGCGGCCGCTCGAGCAGAACTCATCTCAGAAGAGGATCTGGCAGCAAATGATATCTGGATT
 ACAAGGATGACGACGATAAGGTTTAA

Protein Sequence:

>RC223462 representing NM_004666
 Red=Cloning site Green=Tags(s)

MTTQLPAYVAIILFYVSRASCQDTFIAAVYEHAAILPNATLTPVSREEALALMNRNLDILEGAITSAADQ
 GAHIIVTPEDAIYGWNFNDRSLYPYLEDIPDPEVNWIPCNRRNRFQTPVQERLSCLAKNNSIYVVANIG
 DKKPCDSDPQCPPDGRYQYNTDVVFDVDSQGLVARYHKQNLFMGENQFNVPKEPEIVTFNTTFGSGGIFT
 CFDILFHDPVAVTLVKDFHVDIVFPTAWMNVLPPLSAVEFHSAWAMGMRVNFASNIHYPSKKMTGSGIY
 APNSSRAFHYDMKTEEGKLLLSQLDSHPSHSAVVNWTSSYASSIEALSSGNKEFKGTVFDEFVFKLTGV
 AGNYTVCKDLCHLSYKMSENIPNEVYALGAFDGLHTVEGRYYLQICTLLKCKTTLNLTGDSAEAST
 RFEMFSLSGTFTQYVFPEVLLSENQLAPGEFQVSTDGRLFSLKPTSGPVLTVTLFGRLEYKDWASNASS
 GLTAQARIIMLIVIAPIVCSLSW

TRTRPLEQKLISEEDLAANDILDYKDDDDKV

Chromatograms:

https://cdn.origene.com/chromatograms/mk6115_b03.zip

Restriction Sites:

SgfI-MluI

Cloning Scheme:


ACCN: NM_004666

ORF Size: 1539 bp

OTI Disclaimer: The molecular sequence of this clone aligns with the gene accession number as a point of reference only. However, individual transcript sequences of the same gene can differ through naturally occurring variations (e.g. polymorphisms), each with its own valid existence. This clone is substantially in agreement with the reference, but a complete review of all prevailing variants is recommended prior to use. [More info](#)

OTI Annotation: This clone was engineered to express the complete ORF with an expression tag. Expression varies depending on the nature of the gene.

Components: The ORF clone is ion-exchange column purified and shipped in a 2D barcoded Matrix tube containing 10ug of transfection-ready, dried plasmid DNA (reconstitute with 100 ul of water).

Reconstitution Method:

1. Centrifuge at 5,000xg for 5min.
2. Carefully open the tube and add 100ul of sterile water to dissolve the DNA.
3. Close the tube and incubate for 10 minutes at room temperature.
4. Briefly vortex the tube and then do a quick spin (less than 5000xg) to concentrate the liquid at the bottom.
5. Store the suspended plasmid at -20°C. The DNA is stable for at least one year from date of shipping when stored at -20°C.

RefSeq: [NM_004666.1](#), [NP_004657.1](#)

RefSeq Size: 3109 bp

RefSeq ORF: 1542 bp

Locus ID: 8876

UniProt ID: [O95497](#)

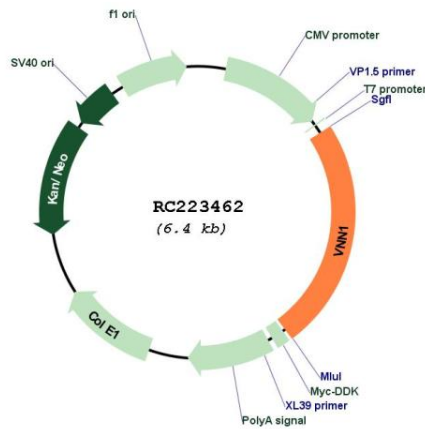
Cytogenetics: 6q23.2

Protein Pathways: Pantothenate and CoA biosynthesis

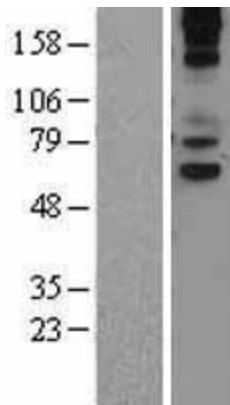
MW: 57.02 kDa

Gene Summary: This gene encodes a member of the vanin family of proteins, which share extensive sequence similarity with each other, and also with biotinidase. The family includes secreted and membrane-associated proteins, a few of which have been reported to participate in hematopoietic cell trafficking. No biotinidase activity has been demonstrated for any of the vanin proteins, however, they possess pantetheinase activity, which may play a role in oxidative-stress response. This protein, like its mouse homolog, is likely a GPI-anchored cell surface molecule. The mouse protein is expressed by the perivascular thymic stromal cells and regulates migration of T-cell progenitors to the thymus. This gene lies in close proximity to, and in the same transcriptional orientation as, two other vanin genes on chromosome 6q23-q24. [provided by RefSeq, Feb 2009]

Product images:



Circular map for RC223462



Western blot validation of overexpression lysate (Cat# [LY401479]) using anti-DDK antibody (Cat# [TA50011-100]). Left: Cell lysates from untransfected HEK293T cells; Right: Cell lysates from HEK293T cells transfected with RC223462 using transfection reagent MegaTran 2.0 (Cat# [TT210002]).