

Product datasheet for **RC223461**

GBX2 (NM_001485) Human Tagged ORF Clone

Product data:

Product Type: Expression Plasmids
Product Name: GBX2 (NM_001485) Human Tagged ORF Clone
Tag: Myc-DDK
Symbol: GBX2
Mammalian Cell Selection: Neomycin
Vector: pCMV6-Entry (PS100001)
E. coli Selection: Kanamycin (25 ug/mL)
ORF Nucleotide Sequence: >RC223461 representing NM_001485
Red=Cloning site Blue=ORF Green=Tags(s)

TTTTGTAATACGACTCACTATAGGGCGGCCGGAATTCGTCGACTGGATCCGGTACCGAGGAGATCTGCC
GCC**CGATCGCC**

ATGAGCGCAGCGTCCCGCCGTCGCTGATGATGATGCAGCGCCCGCTGGGGAGTAGCACCGCCTTCAGCA
TAGACTCGCTGATCGGCAGCCCGCCGAGCCAGCCCGGCCATTCGTCTACACCGCTACCCCATGTT
CATGCCCTACCGCCGGTAGTGTGCCGCCGCCGCCGCCGCCGCCGCCGCTGCCACAGCCGCGCTG
CAGCCAGCGCTGCCGCCGCACACCCTACCACCAGATCCCCAGCCTGCCACAGGCTTCTGCTCCAGC
TGGCGCAGGGCATGGCGCTCACCTCATCGCTCATGGCCAGCTCCCCGGCGGCTTCTCCGCTCGCCCA
GCACCAGGAGGCGCAGCGGCCGCAAGTTCGCGCCGACGCGCTGCCCGCGGGCGGTAACCTCGACAAG
GCGGAGGCGCTGCAGGCTGACGCGGAGGACGGCAAAGGCTTCTGGCAAAGAGGCTCGCTGCTCGCCT
TCTCCGCGCCGAGACGGTGCAGGCTTCTGCTCGGGGCTGTCCGAGGGCAAGGAAAGACGAGTCAAA
GGTGGAAGACGACCCGAAAGGGCAAGGAGGAGAGCTTCTCGTGGAGAGCGATGTGGACTACAGCTCGGA

ACGCGTACGCGGCCGCTCGAGCAGAACTCATCTCAGAAGAGGATCTGGCAGCAATGATATCTGGATT
ACAAGGATGACGACGATAAGGTTTAA

Protein Sequence: >RC223461 representing NM_001485
Red=Cloning site Green=Tags(s)

MSAAFPPSLMMMQRPLGSSTAFSIDSILIGSPPQSPGHFVYTGYPMPFMPYRPVLPPLPPPPPPALPQAAL
QPALPPAHPHQIPSLPTGFCSSLAQGMALTSTLMATLPGGFASAPQHQAARAFAPQPLPGGNFQD
AEALQADAEDGKFLAKEGSLAFSAATVQASLVGAVRGQKDESKVEDDPKGGGELLAGERCGLQLG

TRTRPLEQKLISEEDLAANDILDYKDDDDKV

Chromatograms: https://cdn.origene.com/chromatograms/mg3062_d04.zip



[View online »](#)

Restriction Sites: SgfI-MluI

Cloning Scheme:



ACCN: NM_001485

ORF Size: 630 bp

OTI Disclaimer: The molecular sequence of this clone aligns with the gene accession number as a point of reference only. However, individual transcript sequences of the same gene can differ through naturally occurring variations (e.g. polymorphisms), each with its own valid existence. This clone is substantially in agreement with the reference, but a complete review of all prevailing variants is recommended prior to use. [More info](#)

OTI Annotation: This clone was engineered to express the complete ORF with an expression tag. Expression varies depending on the nature of the gene.

Components: The ORF clone is ion-exchange column purified and shipped in a 2D barcoded Matrix tube containing 10ug of transfection-ready, dried plasmid DNA (reconstitute with 100 ul of water).

Reconstitution Method:

1. Centrifuge at 5,000xg for 5min.
2. Carefully open the tube and add 100ul of sterile water to dissolve the DNA.
3. Close the tube and incubate for 10 minutes at room temperature.
4. Briefly vortex the tube and then do a quick spin (less than 5000xg) to concentrate the liquid at the bottom.
5. Store the suspended plasmid at -20°C. The DNA is stable for at least one year from date of shipping when stored at -20°C.

RefSeq Size: 1335 bp

RefSeq ORF: 1047 bp

Locus ID: 2637

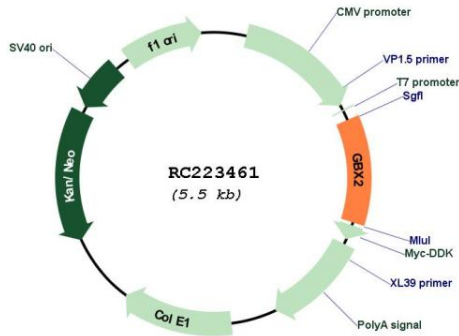
UniProt ID: [P52951](#)

Cytogenetics: 2q37.2

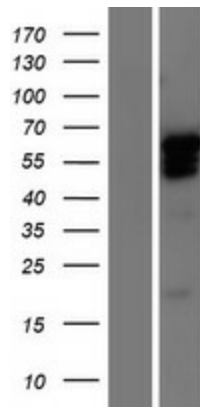
MW: 21.59 kDa

Gene Summary: May act as a transcription factor for cell pluripotency and differentiation in the embryo. [UniProtKB/Swiss-Prot Function]

Product images:



Circular map for RC223461



Western blot validation of overexpression lysate (Cat# [LY419907]) using anti-DDK antibody (Cat# [TA50011-100]). Left: Cell lysates from untransfected HEK293T cells; Right: Cell lysates from HEK293T cells transfected with RC223461 using transfection reagent MegaTran 2.0 (Cat# [TT210002]).