

## Product datasheet for **RC223460**

### SOHLH2 (NM\_017826) Human Tagged ORF Clone

#### Product data:

Product Type:	Expression Plasmids
Product Name:	SOHLH2 (NM_017826) Human Tagged ORF Clone
Tag:	Myc-DDK
Symbol:	SOHLH2
Synonyms:	bHLHe81; SOSF2; SPATA28; TEB1
Mammalian Cell Selection:	Neomycin
Vector:	pCMV6-Entry (PS100001)
E. coli Selection:	Kanamycin (25 ug/mL)



[View online »](#)

**ORF Nucleotide Sequence:**

>RC223460 representing NM\_017826  
 Red=Cloning site Blue=ORF Green=Tags(s)

TTTTGTAATACGACTCACTATAGGGCGGCCGGAATTCGTCGACTGGATCCGGTACCGAGGAGATCTGCC  
 GCC**CGGATCGCC**

ATGGCTTCTCAATTATCTGCCAGGAGCACTGCCAGATCTCGGGCCAGGCAAAAATAGACATCTTATTAG  
 TTGGAGATGTCACTGTGGGCTACCTGGCTGATACTGTACAGAACTATTTGCAAACATAGCAGAAGTCAC  
 CATCACCATCAGTGACACGAAGGAGGCAGCAGCGCTTTTGGATGATTGCATATTTCAACATGGTTCTCTTG  
 AAGGTGCCTTCTCACTAAGTGCCGAGGAGCTGGAAGCCATCAAGTTAATTAGATTTGGCAAAAAGAAAA  
 ATACACATTCAGTGTGTTTTTATAATCCCTGAAAATTTAAAGTTGTATTTCAAGGCATGGAATGGA  
 TATTGCTTAACTGAACCACTGACAATGGAAAAATGAGTAATGTGGTAAATACTGGACAACATGTCCC  
 TCAAACACTGTTAAGACTGAAAACGCAACTGGCCTGAAGAACTGGATTGCCCTGCAGAGGTCTTACA  
 GCGAACACCTGGGATATTTTCTACTGATCTATTTGCCTGCTCTGAATCTTTAAGGAATGGCAATGGCT  
 TGAATTAATGCTTCGTTGTCAGAGTTCGAGAAAAACAAAAGATCTCTCTTCTTCAATCAAGCAAGGAA  
 AAATAAGAAGGGAAAGAATCAAATATTGCTGTGAGCAGCTGCGTACTCTTTGCCGTATGTAAAAGGGA  
 GAAAGAATGATGCGGCTTCAGTCTTGAGGCAACAGTTGATTATGTGAAATATATCCGGGAGAAAATCTC  
 TCCAGCCGTTATGGCCAGATTACAGAAGCACTTCAGAGCAACATGAGGTTTTGTAAAGAAACAACAACA  
 CCCATTGAGCTGTCTCTCCAGGCACTGTATGGCACAGCGGAAACAGTGTGATGAGCACTTACTCCC  
 CTGAGAGAGGGCTCCAATTCCTGACTAATACGTGCTGGAATGGGTGCTCCACTCTGATGAGAGAGCTC  
 CTTGGATGAAGCTGTGAGAGTCCATCAAGCTCCGCCTCAGAGAATGCTATTGGTGATCCATATAAACT  
 CACATTTCCAGTGCAGCGCTGTCTCTGAATTCCTTGCATACTGTGAGATATTATTCTAAAGTCACCCCTT  
 CCTACGATGCAACTGCTGAACAAATCAGAACATTTCAATTCATTTACCTTCAGCCATGCCCCGGTCTC  
 AAAGCTTCTCCCTCGGCACTGCACTTCTGGGTTGGGCCAGACGTGCACTACACATCCCAACTGTCTGCAA  
 CAGTTTTGGCGTAT

**ACGCGT**ACGCGGCCGCTCGAGCAGAACTCATCTCAGAAGAGGATCTGGCAGCAATGATATCTGGATT  
 ACAAGGATGACGACGATAAGGTTTAA

**Protein Sequence:**

>RC223460 representing NM\_017826  
 Red=Cloning site Green=Tags(s)

MASSIIQEHQISGQAKIDILLVGDVTVGYLADTVQKLFANIAEVTITISDTKEAAALLDDCIFNMVLL  
 KVPSSLSAELEAIKLIIRFGKKKNTSLFVFIIPENFKGCISGHGMDIALTEPLTMEKMSNVVYWTTC  
 SNTVKTENATGPEELGLPLQRSYSEHLGYFPTDLFACSESLRNGNGLELNASLSEFEKNNKISLLHSSKE  
 KLRRERIKYCCEQLRTLTPYVKGRKNDAAASVLEATVDYVKYIREKISPAVMAQITEALQSNMRFCKKQQT  
 PIELSLPGTVMAQRENSVMSTYSPERGLQFLTNTCWNGCSTPDAESSLDEAVRVPSSASENAIGDPYKT  
 HISSAALSLNSLHTVRYYSKVTPSYDATAVTNQNISIHLPSPMPVSKLLPRHCTSGLGQTCTTHPNCLQ  
 QFWAY

**TR**TRPLEQKLISEEDLAANDILDYKDDDDKV

**Chromatograms:**

[https://cdn.origene.com/chromatograms/mk8116\\_g02.zip](https://cdn.origene.com/chromatograms/mk8116_g02.zip)

**Restriction Sites:**

Sgfl-Mlul

**Cloning Scheme:**


**ACCN:** NM\_017826

**ORF Size:** 1275 bp

**OTI Disclaimer:** The molecular sequence of this clone aligns with the gene accession number as a point of reference only. However, individual transcript sequences of the same gene can differ through naturally occurring variations (e.g. polymorphisms), each with its own valid existence. This clone is substantially in agreement with the reference, but a complete review of all prevailing variants is recommended prior to use. [More info](#)

**OTI Annotation:** This clone was engineered to express the complete ORF with an expression tag. Expression varies depending on the nature of the gene.

**Components:** The ORF clone is ion-exchange column purified and shipped in a 2D barcoded Matrix tube containing 10ug of transfection-ready, dried plasmid DNA (reconstitute with 100 ul of water).

**Reconstitution Method:**

1. Centrifuge at 5,000xg for 5min.
2. Carefully open the tube and add 100ul of sterile water to dissolve the DNA.
3. Close the tube and incubate for 10 minutes at room temperature.
4. Briefly vortex the tube and then do a quick spin (less than 5000xg) to concentrate the liquid at the bottom.
5. Store the suspended plasmid at -20°C. The DNA is stable for at least one year from date of shipping when stored at -20°C.

**RefSeq:** [NM\\_017826.3](#)

**RefSeq Size:** 2198 bp

**RefSeq ORF:** 1278 bp

**Locus ID:** 54937

**UniProt ID:** [Q9NX45](#)

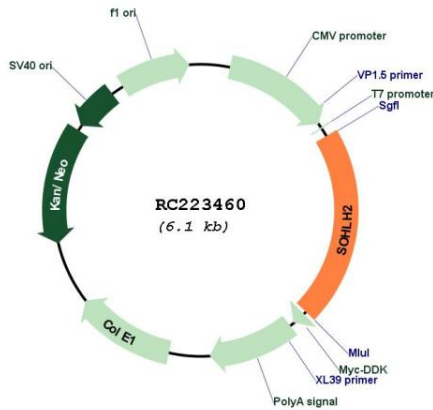
**Cytogenetics:** 13q13.3

**Protein Families:** Transcription Factors

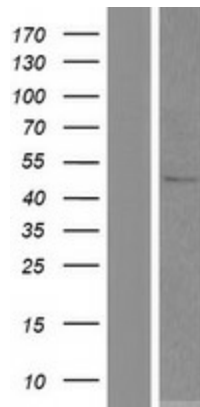
**MW:** 46.9 kDa

**Gene Summary:** This gene encodes one of testis-specific transcription factors which are essential for spermatogenesis, oogenesis and folliculogenesis. This gene is located on chromosome 13. The proteins encoded by this gene and another testis-specific transcription factor, SOHLH1, can form heterodimers, in addition to homodimers. There is a read-through locus (GeneID: 100526761) that shares sequence identity with this gene and the upstream CCDC169 (GeneID: 728591). Alternatively spliced transcript variants encoding different isoforms have been found for this gene. [provided by RefSeq, Aug 2013]

**Product images:**



Circular map for RC223460



Western blot validation of overexpression lysate (Cat# [LY413511]) using anti-DDK antibody (Cat# [TA50011-100]). Left: Cell lysates from untransfected HEK293T cells; Right: Cell lysates from HEK293T cells transfected with RC223460 using transfection reagent MegaTran 2.0 (Cat# [TT210002]).