

Product datasheet for **RC223459**

SUCO (NM_016227) Human Tagged ORF Clone

Product data:

Product Type: Expression Plasmids
Product Name: SUCO (NM_016227) Human Tagged ORF Clone
Tag: Myc-DDK
Symbol: SUCO
Synonyms: C1orf9; CH1; OPT; SLP1
Vector: pCMV6-Entry (PS100001)
E. coli Selection: Kanamycin (25 ug/mL)
Cell Selection: Neomycin
ORF Nucleotide Sequence: >RC223459 representing NM_016227
Red=Cloning site Blue=ORF Green=Tags(s)

TTTTGTAATACGACTCACTATAGGGCGGCCGGAATTCGTCGACTGGATCCGGTACCGAGGAGATCTGCC
GCC**CGATCGCC**

ATGAGAGGATTCTTGGCAGCCCTTTCTATCTACCAATCAACATCTAGCTCAATGGGGCAGTCCATTGC
CACAGGAAAAGGGCTTGGTGCAGCTTCCCTCACAAACACACAGTCATTCTAGGCCATTCCACGAAGTGTG
CTCAAAAGAGGAAAACAGTGAACAGTTCCAAAGCTGATCAGTCTCGTGGTGAGCAGCGAAACTATAGAC
TTCTCTAACAAAACCATGGATTCTAGGAGGACTGGGAAAGAGAAAAACGAATTCGGAAGGCAAACATAC
AACTCCCAAAGGCCCTTGCAGCGACTCAGCGCGGAGGGACGAAGGGCGGGCGTGGACGAGCCGGTGGCT
GCAGCGCGCGGGTCCCGGAGTCTGTGAAGCGCCCCTGTCCGCGCTCTGTGGGGCCCTCAGAGAGGG
CTGCCAGGACGCGAGCCACTGAGGAGCCGCTCAGCCAGCGCCATAGCCCTTAGGACTATCGGTCACATTC
TCGCGCTCCTGCTCCGGCTCCTCATCTTGGCCTCGGCAGTGGCGGCTGCCGGGAGGATGTGCCGCTTC
TGGCAGGGGAAGAAGGAGGAGAAGATGAAGAAGCACCGCGGGCCTTGGCCCTGGTCTCCTGCCTCTTT
CTGTGCTCTGGTCTGGCTTCCAGCTGGCGTGTATGTTGTAAGAGAGTTCCTCAGCTCAGCGTCAT
CATATTACTCTCAAGATGACAACTGCGCACTAGAAAATGAAGATGTACAATTCCAGAAAAAGAATACAGA
GTCAAAAAAGTTAAGTCCACCGGTGGTGGAGACTCCCTACAGTTGATTTGCATGAAGAGTCTTCCAAT
GCAGTTGTGGACAGTGAACTGTTGAAAATATTTCCAGCTCATCTACCTCAGAAATCACTCCAATCTCAA
AGCTTGATGAAATAGAAAATCTGGTACTATCCGATAGCCAAACCAAGTAACTGAGCAGTCTGAAAC
TGATTGTGATGTTGGTGAAGCCCTTGTGCTAGTGTCCAATTGAACAACCTTCTTTGTGAGTCCACCT
GACAGCCTTGTGGCCAGCATATAGAAAATGTATCATCTTCACATGGTAAAGGAAAGATAACAAAATCAG
AATTTGAATCAAAGTTTCAGCAAGTGAACAGGGCGGTGGTATCCAAAATCTGCATTGAATGCTTCAGA
TAATTTAAAAATGAGAGCTCTGATTATACAAAACAGGAGACATTGACCCTACATCAGTAGCAAGTCCC
AAAGATCCAGAAGATATACCAACATTTGATGAATGGAAGAAGAAAGTTATGGAAGTAAAAAAGAAAAA
GTCAAGTGCATGCATCTTCTAATGGAGTTACATGCCACCAAAAAGGTCCAGAAAAATCGAAATAA
TTATGCCTCAGTAGAATGTGGTGCCAAAATTTAGCAGCTAATCCAGAAGCCAAGAGCACATCTGCTATT
CTTATAGAAAATATGGATCTTTACATGTTGAATCCTTGCAGCACTAAAATTTGGTTGTTATTGAACTTT



GTGAACCAATTCAAGTAAAACAGCTTGATATTGCAAATTATGAATTATTTTCTTCTACTCTAAAGATTT
TCTGGTTTCTATCAGTGACAGATATCCAACAAATAAGTGGATTAAGCTGGTACTTTTCATGGTAGAGAT
GAGCGAATGTACAGAGTTTCCCTTTAGATGAACAGATGTATGCAAAATATGTCAAGGTTGAGTTGCTAT
CACATTTTGGATCAGAGCACTTTTGTCCATTAAGCCTTAAGGGTATTTGGCACTAACATGGTGAAGA
ATATGAAGAAATTGCTGATCCCAGTATCACTCAGAACGCCAGGAACATTTGATGAGGACTATGATTAT
CCACTGGATTATAAATACTGGAGAGGATAAATCCTCAAAAAATCTCTTGGTTCTGCTACAAATGCCATTC
TAAATATGGTGAATATTGCTGCTAATATTCTGGGAGCAAAAACTGAAGACCTGACAGAAGGAAATAAAG
TATATCTGAGAATGCCACTGCCACAGCTGCACCTAAAATGCCTGAATCAACTCCTGTTTCAACTCCTGTT
CCATCTCCTGAGTATGTAACCACTGAAGTACACACACATGACATGGAGCCGTCAACACCAGATACTCCAA
AAGAGAGTCCCATTGTACAGTTAGTTCAAGAGGAGGAAGAGGAGGCAAGTCCATCTACAGTGACCCTTCT
GGGCAGCGGTGAACAGGAAGATGAATCATCACCCTGGTTTGAAGTACAGAGACACAAATATTTTGCAGTGAA
CTGACCACAATTTGTTGATTTTCTAGTTTTTCTAGATACATATATAAATGGTGTTCAGTTAGAGTTGCTC
TTTATCGGCAGCGCAGCCGAACCTTTGAGTAAAGGAAAAGATTATCTTGTGTTAGCTCAACCACCCTT
ACTACTTCTGCGGAATCAGTAGATGTTTCAAGTATTGCAACCTCTGAGTGGAGAATTGAAAATACGAAT
ATAGAAAGGGAAGCTGAAACTGTTGTTCTGGGTGATTTAAGTAGTAGTATGCACCAGGATGACTTGGTGA
ATCACACTGTAGATGCAGTTGAACTTGAACCAAGCCATTCTCAAACCTTTTCTCAGTCTCTTTTAGA
TATTACCCCGAAATCAATCCCTTGCCATAAATAGAAGTATCTGAGTCTGTTGAATATGAGGCAGGACAT
ATACCATCACCAGTGATCCCAAGAGAGTTCTGTTGAGATCGATAATGAAAACAGAACAAAAGTCTGAGA
GCTTTAGTTCTATAGAGAAACCATCTATTACCTATGAAAACAAATAAGTTAATGAGTTAATGGATAATAT
TATAAAGAAGATATGAACTCCATGCAATTTTCAAAAGCTGTCTGAAACAATAGTGCCACCAATAAAT
ACAGCCACTGTACCCGACAATGAAGATGGGGAAGCCAAAATGAATATAGCTGACACAGCAAAGCAAACCT
TGATTTCTGTTGGATTCTTCTTACCTGAAGTAAAAGAAGAACAAGTCTCCAGAAGATGCCCT
TTTGAGAGGGTTACAGAGGACAGCTACAGATTTTATGCTGAATTGCAAAATCTACAGATCTAGGATAT
GCTAATGGAAATCTTGTACATGGATCAAACCAAAAGGAGTCAGTATTTATGAGACTTAATAATCGTATTA
AAGCCTTAGAAGTTAACATGTCTCTCAGTGGTCTGCTATCTGGAGGAGCTTAGCCAAAGGTACCGAAAACA
AATGGAAGAAATGCAAAAAGGCTTTCAACAAAACAATCGTGAAACTTCAGAATACTTCAAGAATAGCAGAG
GAGCAGGATCAGCGGCAAACTGAAGCCATCCAGTTGCTACAGGCACAGCTGACCAACATGACACAGCTTG
TTTCAAATTTATCAGCAACAGTAGCAGAATTGAAACGGGAGGTTTCAGATCGACAAGCTATCTTGTGAT
ATCTTTGGTTCTTGTGTTGCTTGGGACTGATGCTTTGTATGCAGCGTTGTGCAAACTTCTCAATTT
GATGGAGATTATTTTCAAACCTTCTAAAAGTAATCAGTATCCAAGCCCTAAAAGGTGTTTCTCTTCTCT
ATGATGATATGAATTTGAAAAGAAGAATTCATCCCCTCATGAGATCCAAGTCTCTACAGTTAACTGG
CAAAGAAGTAGACCCAAATGATTTGTACATTGTAGAACCCTCAAGTTTTCTCCAGAAAAGAAGAAG
CGCTGCAAGTACAAAATTGAAAAAATTGAGACCATAAAGCCTGAAGAACCATTGCACCCCATAGCCAATG
GCGACATAAAAAGGAAGAAAGCCCTTTACGAACCAGAGAGATTTTTCTAATATGGGAGAAGTTTACTCTC
TTCTTATAAAGGTCTCCATCTGAAGGAAGCTCAGAACTTCAACAGTCAAGAGATCCTATTTTGT
GGCATTTCAGCTTGACAAAGTCTGTGCAATGGACAGTCTCAAAGACAAAAACTGAGAAGAGGGCTTTAA
AACGAAGACGATCTAAAGTCCAAGCAAGGAAAATTGATAAAAACTCTAATACAGACTAAGTCGGGATC
ATTGCCGAGCCTGCATGACATAATCAAAGGAAACAAAGAGATCACCGTGGGAACATTTGGTGTACAGCA
GTCTCGGGACATATC

ACGCGTACGCGGCCGCTCGAGCAGAACTCATCTCAGAAGAGGATCTGGCAGCAATGATATCCTGGATT
ACAAGGATGACGACGATAAGGTTTAA

Protein Sequence: >RC223459 representing NM_016227
 Red=Cloning site Green=Tags(s)

MRGFLARPFLLSTNQHLAQWGSPLPQGKGLVQLPSQHTRHSRPFHELCSKEENSATVPKLIISLVVSSETID
 FSNKTMDSRRDWEREKRIIEGKLQPKALARTQARDEGRAWTSRWLQRRRSPEACEAPLSAPLWGPQRG
 LPGREPLRSRSASAIARTIGHILALLRLHLGLGSGGCREDPVPSGRGKKEEKMKKHRRALALVSCLF
 LCSLVWLP SWRVCKESSASASSYYSQDDNCALENEVDVQFKKNTESKLLSPPVETLPTVDLHEESSN
 AVVDSETVENISSSTSEITPIISKLDEIEKSGTIPIAKPSETEQSETDCDVGEALDASAPIEQPSFVSP
 DSLVGQHIENVSSSHGKGIKSEFESKVSASEQGGGDPKALNASDNLKNESSDYTKPGDIDPTSVASP
 KDPEIDIPTFDEWKKVMEVEKEKSQSMHASSNGGSHATKKVQKNRNNYASVECGAKILAAANPEAKSTSAI
 LIENMDLYMLNPCSTKIWFVIELCEPIQVKQLDIANYELFSSTPKDFLVSISDRYPTNKWIKLGTFHGRD
 ERNVQSFPLDEQMYAKYKVELLSHFGSEHFCPLSLIRVFGTNMVEEYEEIADSQYHSERQELFDEYDY
 PLDYNTGEDKSSKNLLGSATNAILNMVNI AANILGAKTEDLTEGNKSI SENATATAAPKMPESTPVSTPV
 PSPEYVTEVHTHMEPSTPDPKESPIVQLVQEEEEASPSTVTLGSGEQEDESPPWFESETQIFCSE
 LTTICCISSFSEYIKWCSVRVALYRQRSRTALSKGKDYLVLAQPPLLLPAESVDVSVLQPLSGELEN
 IEREAETVVLGDLSSSMHQDDL VNHTVDAVELEPSHSQTL SQSLLLDITPEINPLPKIEVESVEYEA
 GHI P SPV I P Q E S S V E I D N E T E Q K S E S F S S I E K P S I T Y E T N K V N E L M D N I I K E D M N S M Q I F T K L S E T I V P P I N
 T A T V P D N E D G E A K M N I A D T A K Q T L I S V V D S S S L P E V K E E E Q S P E D A L L R G L Q R T A T D F Y A E L Q N S T D L G Y
 A N G N L V H G S N Q K E S V F M R L N N R I K A L E V N M S L S G R Y L E E L S Q R Y R K Q M E E M Q K A F N K T I V K L Q N T S R I A E
 E Q D Q R Q T E A I Q L L Q A Q L T N M T Q L V S N L S A T V A E L K R E V S D R Q S Y L V I S L V L C V V L G L M L C M Q R C R N T S Q F
 D G D Y I S K L P K S N Q Y P S P K R C F S S Y D D M N L K R R T S F P L M R S K S L Q L T G K E V D P N D L Y I V E P L K F S P E K K K K
 R C K Y K I E K I E T I K P E E P L H P I A N G D I K G R K P F T N Q R D F S N M G E V Y H S S Y K G P P S E G S S E T S S Q S E E S Y F C
 G I S A C T S L C N G Q S Q K T K T E K R A L K R R R S K V Q D Q G K L I K T L I Q T K S G S L P S L H D I I K G N K E I T V G T F G V T A
 V S G H I

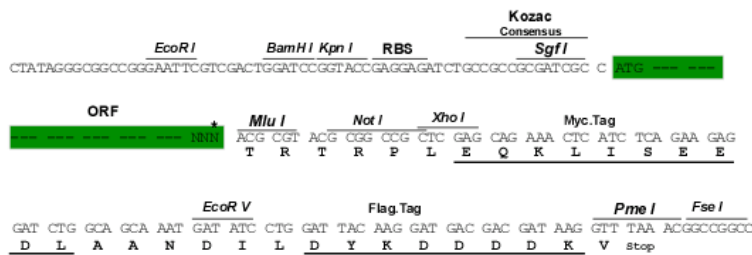
TRTRPLEQKLISEEDLAANDILDYKDDDDKV

Restriction Sites:

Sgfl-MluI

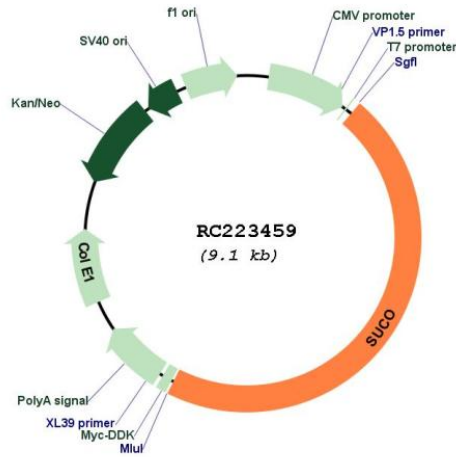
Cloning Scheme:

Cloning sites used for ORF Shuttling:



* The last codon before the Stop codon of the ORF

Plasmid Map:



ACCN: NM_016227

ORF Size: 4215 bp

OTI Disclaimer: The molecular sequence of this clone aligns with the gene accession number as a point of reference only. However, individual transcript sequences of the same gene can differ through naturally occurring variations (e.g. polymorphisms), each with its own valid existence. This clone is substantially in agreement with the reference, but a complete review of all prevailing variants is recommended prior to use. [More info](#)

OTI Annotation: This clone was engineered to express the complete ORF with an expression tag. Expression varies depending on the nature of the gene.

Components: The ORF clone is ion-exchange column purified and shipped in a 2D barcoded Matrix tube containing 10ug of transfection-ready, dried plasmid DNA (reconstitute with 100 ul of water).

Reconstitution Method:

1. Centrifuge at 5,000xg for 5min.
2. Carefully open the tube and add 100ul of sterile water to dissolve the DNA.
3. Close the tube and incubate for 10 minutes at room temperature.
4. Briefly vortex the tube and then do a quick spin (less than 5000xg) to concentrate the liquid at the bottom.
5. Store the suspended plasmid at -20°C. The DNA is stable for at least one year from date of shipping when stored at -20°C.

RefSeq: [NM_016227.1](#), [NP_057311.1](#)

RefSeq Size: 5919 bp

RefSeq ORF: 4218 bp

Locus ID: 51430

UniProt ID: [Q9UBS9](#)

Cytogenetics: 1q24.3

Protein Families: Transmembrane

MW: 156.48 kDa

Gene Summary: Required for bone modeling during late embryogenesis. Regulates type I collagen synthesis in osteoblasts during their postnatal maturation (By similarity).[UniProtKB/Swiss-Prot Function]