

Product datasheet for **RC223458**

TTLL13 (NM_001029964) Human Tagged ORF Clone

Product data:

Product Type:	Expression Plasmids
Product Name:	TTLL13 (NM_001029964) Human Tagged ORF Clone
Tag:	Myc-DDK
Symbol:	TTLL13
Synonyms:	FLJ46079; MGC33417
Mammalian Cell Selection:	Neomycin
Vector:	pCMV6-Entry (PS100001)
E. coli Selection:	Kanamycin (25 ug/mL)



[View online »](#)

ORF Nucleotide Sequence:

>RC223458 representing NM_001029964
 Red=Cloning site Blue=ORF Green=Tags(s)

TTTTGTAATACGACTCACTATAGGGCGGCCGGGAATTCGTCGACTGGATCCGGTACCGAGGAGATCTGCC
 GCC**GCGATCGCC**

ATGGAGCCGAGTACCTGTAGGACCATGGAATCAGAGGAAGACTATGTTGAGGAAAAGGAATCTGAGAAGT
 GTGTTAAAGAGGGAGTTACCAACCCCTCTAACTCTTACAGCAGGCTCTTTAAAAGCTGACTATAAGGC
 ATTAATAAATGGGGTTCCTCACCCATTATGGCCACAAAAATCCGAAGAAAGTCATAGCCCCAGTTGAC
 ACAGGCGACTTAGAAGCTGGGAGGAGGAAGAGAAGGCGGAAACGCAGATCACTGGCCATCAACCTGACCA
 ACTGCAAGTATGAGAGTGTGCGTCGGCAGCCAAATGTGTGCCCTGAAGGAGGTGGGGAGGATGAAGA
 GTGGACTCTGTACTGGACAGACTGCGCTGTCTCACTGGAACGAGTCATGGACATGAAGAGTTTCAGAAA
 ATCAACCCTTCCCTGGCATGACAGAAATCTGCCGCAAAGATCTGCTGGCTCGGAACCTCAACCGCATGT
 ACAAACCTATCCCTCTGAGTACAACATCTTCCCCGCACCTGGTGCCTCCCCGAGACTATGGGGACTT
 CCAGTCTACGGTCGTCAGCGAAAAGCCCGCACATATATCTGCAAGCCAGACAGTGGCTGTCAGGGACGT
 GGCATCTTCATTACCCGAAATCCCCGGGAGATCAAGCCAGGAGAGCATATGATCTGCCAGCAATACATCT
 CCAAGCCCTCCTCATTGATGGCTTCAAGTTTGATATGCGAGTCTACGTCTGATCACATCTGTGACCC
 TCTCCGGATCTTACATATGAGGAGGGCCTAGCCCGTTTTGCCACCACGCCCTATATGGAGCCCAGCCAT
 AACAACTGGACAATGTCTGCATGCACCTGACCAACTATGCTATCAACAAACACAATGAGAATTTTGTC
 GGGATGGCGCTGTGGGCAGTAAGAGGAAGCTGTCGACACTCAACATCTGGCTGCAAGAGCACAGTACAA
 CCCTGGAGAGCTGTGGGGGACATCGAGGACATCATCATCAAACCATCATCTCAGCCCATTCTGTTCTA
 CGCCACAACCTACCGAACCTGTTTTCCCCAGTATCTGAATGGAGGTACATGTGCCTGTTTTGAAATCCTTG
 GTTTTGACATCTTGTGGACCACAAGTTGAAGCCCTGGCTGCTAGAGGTAACCACTCTCCAAGCTTAC
 CACGGACTCATGCCTTGATCAAGAAGTAAGGATGCACCTCTCTGTGATGCTATGACCCTTGTCACCTC
 CGGGGCTGTGACAAAAGGAAGGTGATGGAGGAGGATAAGCGCGAGTCAAGGAACGGCTTTTCCAGTGCT
 ACCGACAGCCACGAGAATCTAGGTGTGCTAGGTGTCTGGCATGTGTT

ACGCGTACGCGGCCGCTCGAGCAGAAACTCATCTCAGAAGAGGATCTGGCAGCAATGATATCCTGGATT
 ACAAGGATGACGACGATAAGGTTTAA

Protein Sequence:

>RC223458 representing NM_001029964
 Red=Cloning site Green=Tags(s)

MEPSTCRMESEEDYVEEKESEKCVKEGVTNPSNSSQALLKADYKALKNGVPSPIMATKIPKKVIAPVD
 TGDLEAGRKRKRRLAIDL TNCKYESVRRAAQMCGLKEVGEDEEWLYWTDCAVSLERVMDMKRFQK
 INHFPGMTEICRKDLLARNLNRMKLYPSEYNIFPRTWCLPADYGDFQSYGRQRKARTYICKPDSGCQGR
 GIFITRNPREIKPGEHMICQYISKPLLDGFKFDMRVYVLTSCDPLRIFTYEEGLARFATTPYMEPSH
 NNLDNVMHLTNYAINKHNENFVRDGAAGVSKRKLSTLNIWLQEHSYNPGELWGDIEDIIIKTIISAHSV
 RHNYRTECFPQYLNNGTCACFEILGFDILLDHKLKPWLLVNHSPSFTTDSCLDQEVKDALLCDAMTLVNL
 RGC DKRKMVEEDKRRVKERLFQCYRQPRESRCARCLACV

TRTRPLEQKLISEEDLAANDILDYKDDDDKV

Chromatograms:

https://cdn.origene.com/chromatograms/mk8047_a08.zip

Restriction Sites:

Sgfl-Mlul

Cloning Scheme:


ACCN: NM_001029964

ORF Size: 1377 bp

OTI Disclaimer: The molecular sequence of this clone aligns with the gene accession number as a point of reference only. However, individual transcript sequences of the same gene can differ through naturally occurring variations (e.g. polymorphisms), each with its own valid existence. This clone is substantially in agreement with the reference, but a complete review of all prevailing variants is recommended prior to use. [More info](#)

OTI Annotation: This clone was engineered to express the complete ORF with an expression tag. Expression varies depending on the nature of the gene.

Components: The ORF clone is ion-exchange column purified and shipped in a 2D barcoded Matrix tube containing 10ug of transfection-ready, dried plasmid DNA (reconstitute with 100 ul of water).

Reconstitution Method:

1. Centrifuge at 5,000xg for 5min.
2. Carefully open the tube and add 100ul of sterile water to dissolve the DNA.
3. Close the tube and incubate for 10 minutes at room temperature.
4. Briefly vortex the tube and then do a quick spin (less than 5000xg) to concentrate the liquid at the bottom.
5. Store the suspended plasmid at -20°C. The DNA is stable for at least one year from date of shipping when stored at -20°C.

RefSeq: [NM_001029964.2](#), [NP_001025135.2](#)

RefSeq Size: 1793 bp

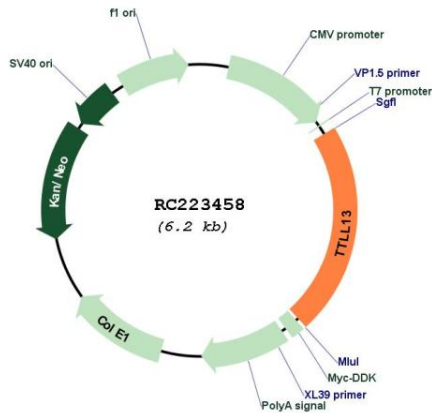
RefSeq ORF: 1379 bp

Locus ID: 440307

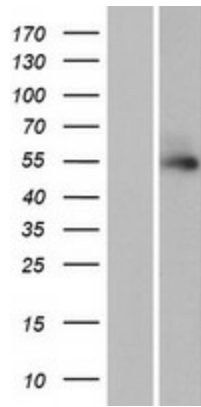
Cytogenetics: 15q26.1

MW: 53 kDa

Product images:



Circular map for RC223458



Western blot validation of overexpression lysate (Cat# [LY422272]) using anti-DDK antibody (Cat# [TA50011-100]). Left: Cell lysates from untransfected HEK293T cells; Right: Cell lysates from HEK293T cells transfected with RC223458 using transfection reagent MegaTran 2.0 (Cat# [TT210002]).