

Product datasheet for **RC223456**

Adropin (ENHO) (NM_198573) Human Tagged ORF Clone

Product data:

Product Type: Expression Plasmids
Product Name: Adropin (ENHO) (NM_198573) Human Tagged ORF Clone
Tag: Myc-DDK
Symbol: Adropin
Synonyms: C9orf165; UNQ470
Mammalian Cell Selection: Neomycin
Vector: pCMV6-Entry (PS100001)
E. coli Selection: Kanamycin (25 ug/mL)
ORF Nucleotide Sequence: >RC223456 representing NM_198573
Red=Cloning site Blue=ORF Green=Tags(s)

TTTTGTAATACGACTCACTATAGGGCGGCCGGAATTCGTCGACTGGATCCGGTACCGAGGAGATCTGCC
GCC**CGATCGCC**

ATGGGGGAGCCATCTCCAGGGGGCCCTCATCGCCATCGTCTGCAACGGTCTCGTGGGCTTCTTGCTGC
TGCTGCTCTGGGTCATCCTCTGCTGGGCCTGCCATTCTCGCTCTGCCGACGTTGACTCTCTCTGAATC
CAGTCCCAACTCCAGCCCTGGCCCTGTCTGAGAAGGCCACCACCCAGAAGCCAGCCATGAAGGC
AGCTACCTGCTGCAGCCC

ACGCGTACGCGGCCGCTCGAGCAGAAACTCATCTCAGAAGAGGATCTGGCAGCAAATGATATCCTGGATT
ACAAGGATGACGACGATAAGGTTTAA

Protein Sequence: >RC223456 representing NM_198573
Red=Cloning site Green=Tags(s)
MGAAISQGALIAIVCNGLVGFLLLLLWILCWACHSRADVDSLSESSPNSSPGPCPEKAPPPQKPSHEG
SYLLQP

TRTRPLEQKLISEEDLAANDILDYKDDDDKV

Chromatograms: https://cdn.origene.com/chromatograms/mk6111_b12.zip

Restriction Sites: Sgfl-Mlul



[View online »](#)

Cloning Scheme:


ACCN: NM_198573

ORF Size: 228 bp

OTI Disclaimer: The molecular sequence of this clone aligns with the gene accession number as a point of reference only. However, individual transcript sequences of the same gene can differ through naturally occurring variations (e.g. polymorphisms), each with its own valid existence. This clone is substantially in agreement with the reference, but a complete review of all prevailing variants is recommended prior to use. [More info](#)

OTI Annotation: This clone was engineered to express the complete ORF with an expression tag. Expression varies depending on the nature of the gene.

Components: The ORF clone is ion-exchange column purified and shipped in a 2D barcoded Matrix tube containing 10ug of transfection-ready, dried plasmid DNA (reconstitute with 100 ul of water).

- Reconstitution Method:**
1. Centrifuge at 5,000xg for 5min.
 2. Carefully open the tube and add 100ul of sterile water to dissolve the DNA.
 3. Close the tube and incubate for 10 minutes at room temperature.
 4. Briefly vortex the tube and then do a quick spin (less than 5000xg) to concentrate the liquid at the bottom.
 5. Store the suspended plasmid at -20°C. The DNA is stable for at least one year from date of shipping when stored at -20°C.

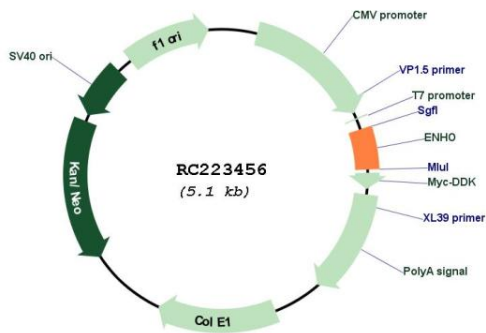
RefSeq: [NM_198573.3](#)

RefSeq Size: 1093 bp

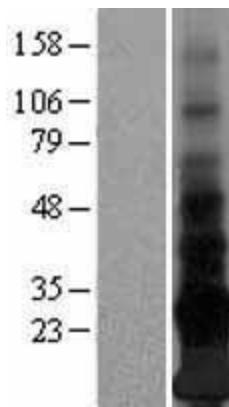
RefSeq ORF: 231 bp

Locus ID: 375704

UniProt ID: [Q6UWT2](#)
Cytogenetics: 9p13.3
Protein Families: Transmembrane
MW: 7.7 kDa
Gene Summary: Involved in the regulation of glucose homeostasis and lipid metabolism.[UniProtKB/Swiss-Prot Function]

Product images:


Circular map for RC223456



Western blot validation of overexpression lysate (Cat# [LY403687]) using anti-DDK antibody (Cat# [TA50011-100]). Left: Cell lysates from untransfected HEK293T cells; Right: Cell lysates from HEK293T cells transfected with RC223456 using transfection reagent MegaTran 2.0 (Cat# [TT210002]).