

## Product datasheet for **RC223455**

### GPLD1 (NM\_177483) Human Tagged ORF Clone

#### Product data:

**Product Type:** Expression Plasmids  
**Product Name:** GPLD1 (NM\_177483) Human Tagged ORF Clone  
**Tag:** Myc-DDK  
**Symbol:** GPLD1  
**Synonyms:** GPIPLD; GPIPLDM; MGC22590; PIGPLD; PIGPLD1  
**Mammalian Cell Selection:** Neomycin  
**Vector:** pCMV6-Entry (PS100001)  
**E. coli Selection:** Kanamycin (25 ug/mL)  
**ORF Nucleotide Sequence:** >RC223455 representing NM\_177483  
Red=Cloning site Blue=ORF Green=Tags(s)

TTTTGTAATACGACTCACTATAGGGCGGCCGGAATTCGTCGACTGGATCCGGTACCGAGGAGATCTGCC  
GCC**CGATCGCC**

ATGTCTGCTTTCAGGTTGTGGCCTGGCCTGCTGATCATGTTGGTTCTCTGCCATAGAGGTTCCCGT  
GTGGCCTTCAACACACGTAGAAATAGGACACAGAGCTCTGGAGTTTCTCAGCTCACAATGGGCGTGT  
TAACTACAGAGAGCTGTTACTAGAACACCAGGATGCGTATCAGGCTGGAATCGTGTTCCTGATTGTTTT  
TACCCTAGCATCTCAAAGGAGGAAAATCCATGATGTGTCTGAGAGCACTCACTGGACTCCGTTTCTTA  
ATGCAAGCGTTCATTATATCCGAGAGAACTATCCCTTCCCTGGGAGAAGGACACAGAGAACTGGTAGC  
TTTCTTGTGTTGAATTACTTCTCACATGGCGGCAGATGTCAGCTGGCATAGTCTGGGCCTTGAACAAGGA  
TTCTTAGGACCATGGGAGCTATTGATTTTACGGCTCCTATTAGAGGCTCATTGCGCTGGTGATTTTG  
GTAAGTGTATTTACATTTGCTAAATTTCTCGTGGTA

**ACGCGT**ACGCGGCCGCTCGAGCAGAACTCATCTCAGAAGAGGATCTGGCAGCAAATGATATCCTGGATT  
ACAAGGATGACGACGATAAGGTTTAA

**Protein Sequence:** >RC223455 representing NM\_177483  
Red=Cloning site Green=Tags(s)  
MSAFRLWPGLLIMLGS LCHRSPCGLSTHVEIGHRALEFLQLHNGRVNYRELLLEHQDAYQAGIVFPDCF  
YPSICKGGKFHDVSESTHWTPFLNASVHYIRENYPLPWEKDTEKLVAFVLFGITSHMAADVSWHSLGLEQG  
FLRTMGAIDFHGSYSEHSAGDFGTVYLHLLNLFVV

**TRTRPLEQKLI**SEEDLAANDILDYKDDDDKV

**Chromatograms:** [https://cdn.origene.com/chromatograms/mk8013\\_c04.zip](https://cdn.origene.com/chromatograms/mk8013_c04.zip)



[View online »](#)

Restriction Sites: SgfI-MluI

Cloning Scheme:



ACCN: NM\_177483

ORF Size: 528 bp

OTI Disclaimer: The molecular sequence of this clone aligns with the gene accession number as a point of reference only. However, individual transcript sequences of the same gene can differ through naturally occurring variations (e.g. polymorphisms), each with its own valid existence. This clone is substantially in agreement with the reference, but a complete review of all prevailing variants is recommended prior to use. [More info](#)

OTI Annotation: This clone was engineered to express the complete ORF with an expression tag. Expression varies depending on the nature of the gene.

Components: The ORF clone is ion-exchange column purified and shipped in a 2D barcoded Matrix tube containing 10ug of transfection-ready, dried plasmid DNA (reconstitute with 100 ul of water).

- Reconstitution Method:
1. Centrifuge at 5,000xg for 5min.
  2. Carefully open the tube and add 100ul of sterile water to dissolve the DNA.
  3. Close the tube and incubate for 10 minutes at room temperature.
  4. Briefly vortex the tube and then do a quick spin (less than 5000xg) to concentrate the liquid at the bottom.
  5. Store the suspended plasmid at -20°C. The DNA is stable for at least one year from date of shipping when stored at -20°C.

RefSeq: [NM\\_177483.1](#), [NP\\_803436.1](#)

RefSeq Size: 1096 bp

RefSeq ORF: 530 bp

Locus ID: 2822

Cytogenetics: 6p22.3

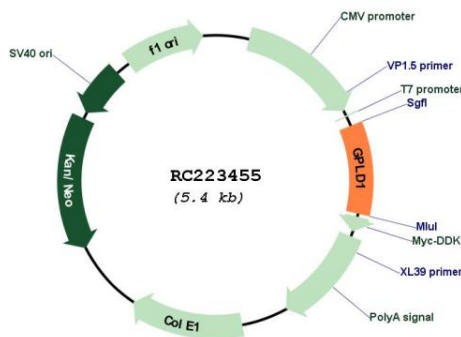
**Protein Families:** Druggable Genome, Secreted Protein

**Protein Pathways:** Glycosylphosphatidylinositol(GPI)-anchor biosynthesis

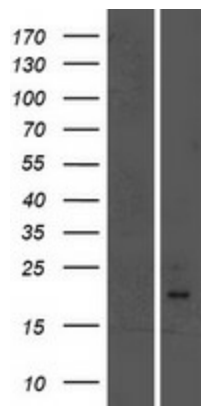
**MW:** 17.3 kDa

**Gene Summary:** Many proteins are tethered to the extracellular face of eukaryotic plasma membranes by a glycosylphosphatidylinositol (GPI) anchor. The GPI-anchor is a glycolipid found on many blood cells. The protein encoded by this gene is a GPI degrading enzyme. Glycosylphosphatidylinositol specific phospholipase D1 hydrolyzes the inositol phosphate linkage in proteins anchored by phosphatidylinositol glycans, thereby releasing the attached protein from the plasma membrane. [provided by RefSeq, Jul 2008]

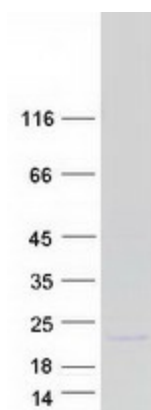
**Product images:**



Circular map for RC223455



Western blot validation of overexpression lysate (Cat# [LY406093]) using anti-DDK antibody (Cat# [TA50011-100]). Left: Cell lysates from untransfected HEK293T cells; Right: Cell lysates from HEK293T cells transfected with RC223455 using transfection reagent MegaTran 2.0 (Cat# [TT210002]).



Coomassie blue staining of purified GPLD1 protein (Cat# [TP323455]). The protein was produced from HEK293T cells transfected with GPLD1 cDNA clone (Cat# RC223455) using MegaTran 2.0 (Cat# [TT210002]).