

Product datasheet for RC223451

WDR86 (NM_198285) Human Tagged ORF Clone

Product data:

Product Type:	Expression Plasmids
Product Name:	WDR86 (NM_198285) Human Tagged ORF Clone
Tag:	Myc-DDK
Symbol:	WDR86
Mammalian Cell Selection:	Neomycin
Vector:	pCMV6-Entry (PS100001)
E. coli Selection:	Kanamycin (25 ug/mL)
ORF Nucleotide Sequence:	>RC223451 representing NM_198285 Red=Cloning site Blue=ORF Green=Tags(s)

TTTTGTAATACGACTCACTATAGGGCGGCCGGGAATTCGTCGACTGGATCCGGTACCGAGGAGATCTGCC
GCC**CGATCGCC**

ATGGGGGGCGCGGGTCTGGCCCTGAGGGTCTGCGCCGACCACCGGGGGGCATCAACTGGCTGAGCCTGA
GCCCGACGGGCAGCGCCTGCTGACGGGCAGCGAGGACGGCAGCGCCCGGCTCTGGAGCACCGCGGACGG
CCAGTGTCTGCGCGCTCCTGCAAGGACATGAAAGCTATGTACCTTCTGCCAGCTGGAGGATGAGGCTGCC
TTCACATGCAGCGCCGACTGCACCATCAGGAGGTGGGACGTGCTGACCGGGCAGTGTCTGCAGGTGTACC
GAGGACACACGTCCATCGTGAACAGGATCCTGGTTGCCAACACAGCTTTCAGCAGCTCCTATGACCG
GACAGCTCGGGTCTGGAGTGTGGACAAGGGCAGATGTCCCGGGAGTTCGGGGCCACCGCAACTGCGTG
CTGACCCTAGCCTACTCTGCCCGTGGGACCTCCCCAGCACTCCCTGCGCGGAGGAGCGCGCGCCGGGG
GGCTTCTGGTGACCGGCAGCACAGATGGCACAGCCAAGGTGTGGCAGGTGGCCAGCGGCTGCTGCCACCA
GACGCTGCGGGGCCACACGGGTGCAGTGTGTGCCTAGTGTAGACACGCCCAGCCACACGGCCTTACCA
GGCAGCACCGACGCCACCATCCGTGCCTGGGACATCCTGAGTGGGAGCAGCTGCGGGTGTTCGGGAGC
ACCGGGGTCCGTATCTGTCTGGAGCTGGTGAACCGACTCGTGTACTCTGGCAGCGGGACAGGACCGT
CAAGTGTGGCTGGCAGACAGGGGAGTGTGTGCGCACGTTACGGCCACAGACGCAACGTGAGCGCC
CTCAAGTACCACGCGGGACCTTGTTACGGGCAGCGGGACGCTTGGCCCGGGCCTTCGACGCGCAGT
CTGGAGAGCTGCGGAGGGTGTTCGGGGCCACACATTCATCATCAACTGCATCCAGGTGCACGGCCAGGT
GCTCTACACCGCCTCGCACGACGGCGCCCTGCGCCTCTGGGACGTGCGCGGGCTCCGAGGTGCCCGCGG
CCCCCTCCGCCATGCGCAGCCTCTCGCGGCTCTTCAGCAACAAGGTGGGCTGCGCCGCCCGCCCTGCG
AGCCGGCC

ACGCGTACGCGGGCCGCTCGAGCAGAACTCATCTCAGAAGAGGATCTGGCAGCAATGATATCCTGGATT
ACAAGGATGACGACGATAAGGTTTAA



[View online »](#)

Protein Sequence: >RC223451 representing NM_198285
Red=Cloning site Green=Tags(s)

MGGGGSALRVCADHRGGINWLSPDGQRLLTGSEDTARLWSTADGQCCALLQGHEYSYVTFQCLEDEAA
 FTCSADCTIRRDVLTGQCLQVYRGHTSIVNRILVANNQLFSSSYDRTARVWSVDKGQMSREFRGHRNCV
 LTLAYSAPWDL PSTPCAEEAAAGLLVTGSDGTAKVWQVASGCCQTLRGTGAVLCLVLDTPGHTAFT
 GSTDATIRAWDILSGEQLRVFREHRGVSICLELVNRLVYSGSADRTVKCWLADTGECVTRFTAHRNVSA
 LKYHAGTLFTGSGDACARAFDAQSGELRRVFRGHTFIIINCIQVHGQVLYTASHDGALRLWDVYRGLRGAPR
 PPPPMRSL SRLFSNKVGC AAAPLQPA

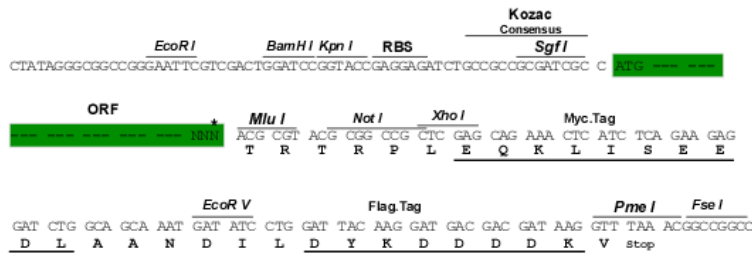
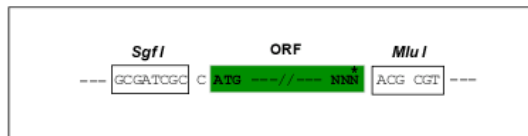
TRTRPLEQKLISEEDLAANDILDYKDDDDKV

Chromatograms: https://cdn.origene.com/chromatograms/mk8047_a10.zip

Restriction Sites: SgfI-MluI

Cloning Scheme:

Cloning sites used for ORF Shuttling:



* The last codon before the Stop codon of the ORF

ACCN: NM_198285

ORF Size: 1128 bp

OTI Disclaimer: The molecular sequence of this clone aligns with the gene accession number as a point of reference only. However, individual transcript sequences of the same gene can differ through naturally occurring variations (e.g. polymorphisms), each with its own valid existence. This clone is substantially in agreement with the reference, but a complete review of all prevailing variants is recommended prior to use. [More info](#)

OTI Annotation: This clone was engineered to express the complete ORF with an expression tag. Expression varies depending on the nature of the gene.

Components: The ORF clone is ion-exchange column purified and shipped in a 2D barcoded Matrix tube containing 10ug of transfection-ready, dried plasmid DNA (reconstitute with 100 ul of water).

- Reconstitution Method:**
1. Centrifuge at 5,000xg for 5min.
 2. Carefully open the tube and add 100ul of sterile water to dissolve the DNA.
 3. Close the tube and incubate for 10 minutes at room temperature.
 4. Briefly vortex the tube and then do a quick spin (less than 5000xg) to concentrate the liquid at the bottom.
 5. Store the suspended plasmid at -20°C. The DNA is stable for at least one year from date of shipping when stored at -20°C.

RefSeq: [NM_198285.3](#)

RefSeq Size: 2056 bp

RefSeq ORF: 1131 bp

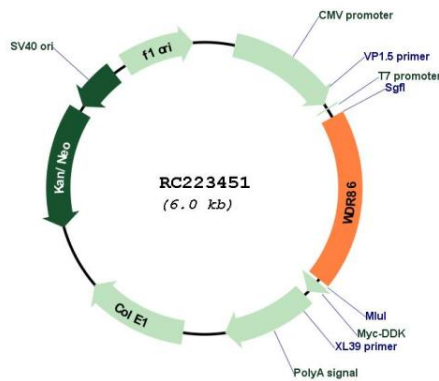
Locus ID: 349136

UniProt ID: [Q86TI4](#)

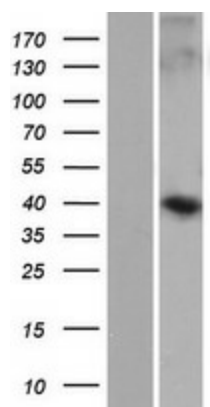
Cytogenetics: 7q36.1

MW: 40.6 kDa

Product images:



Circular map for RC223451



Western blot validation of overexpression lysate (Cat# [LY405008]) using anti-DDK antibody (Cat# [TA50011-100]). Left: Cell lysates from untransfected HEK293T cells; Right: Cell lysates from HEK293T cells transfected with RC223451 using transfection reagent MegaTran 2.0 (Cat# [TT210002]).