

Product datasheet for **RC223448**

NRXN3 (NM_004796) Human Tagged ORF Clone

Product data:

Product Type:	Expression Plasmids
Product Name:	NRXN3 (NM_004796) Human Tagged ORF Clone
Tag:	Myc-DDK
Symbol:	NRXN3
Synonyms:	C14orf60
Mammalian Cell Selection:	Neomycin
Vector:	pCMV6-Entry (PS100001)
E. coli Selection:	Kanamycin (25 ug/mL)
ORF Nucleotide Sequence:	>RC223448 representing NM_004796 Red=Cloning site Blue=ORF Green=Tags(s)

TTTTGTAATACGACTCACTATAGGGCGGCCGGAATTCGTCGACTGGATCCGGTACCGAGGAGATCTGCC
GCC**CGATCGCC**

ATGCTGGGCTCGGACGACTTCTTCTATGTAGGAGGAAGCCCAAGTACCGCTGACTGCCTGGCTCCCCTG
TCAGCAACAACCTCATGGGCTGCCTAAAGAGGTTGTTTATAAGAATAATGACATCCGTCTGGAGCTGTC
TCGCTGGCCCGATTGCGGACACCAAGATGAAAATCTATGGCGAAGTTGTGTTAAGTGTGAGAATGTG
GCCACACTGGACCCCATCAACTTTGAGACCCAGAGGCTTACATCAGCTTGCCCAAGTGGAACTAAAC
GTATGGGCTCCATCTCCTTTGACTTCCGCACCACAGAGCCCAATGGCCTGATCCTCTTCACTCATGGAAA
GCCCAAGAGAGGAAGGATGCTCGGAGCCAGAAGAATACAAAAGTAGACTTCTTTGCCGTGGAACCTCTC
GATGGCAACCTGTACTTGCTGCTTGACATGGGCTCTGGCACCATCAAAGTGAAAGCCACTCAGAAGAAAG
CCAATGATGGGAATGGTACCATGTGGACATTCAGCGAGATGGCAGATCAGGTAATATCAGTGAACAG
CAGGCGCACGCCATTCACCGCCAGTGGGAGAGCGAGATCCTGGACCTGGAAGGAGACATGTACCTGGGA
GGGCTGCCGAGAAACCGTGTGGCCTTATTCTCCCACCGAGCTGTGGACTGCCATGCTCAACTATGGCT
ACGTGGGCTGCATCCGCGACCTATTCATTGATGGGCGCAGCAAGAACATTCGACAGCTGGCAGAGATGCA
GAATGCTGCGGGTGTCAAGTCTCCTGTTCACGGATGAGTGCCAAGCAGTGTGACAGCTACCCCTGCAAG
AATAATGCTGTGTGCAAGGACGGCTGGAACCGCTTCATCTGCGACTGCACCGGCACCGGATACTGGGGAA
GAACCTGCGAAAAGGGAGGCATCCATCCTGAGCTATGATGGTAGCATGTACATGAAGATCATCATGCCCAT
GGTCATGCATACTGAGGCAGAGGATGTGTCCTTCCGCTTCATGTCCCAGCGAGCTTATGGGCTGCTGGTG
GCTACGACCTCCAGGGACTCTGCCGACACCCTGCGTCTGGAGCTGGATGGGGGGCGTGTCAAGCTCATGG
TTAACTTAGACTGTATCAGGATAAACTGTAACCTCAGCAAAGGACCAGAGACCTTGTATGCAGGGCAGAA
GCTCAATGACAACGAGTGGCACACCGTTCCGGTGGTGGGAGAGGAAAAAGCCTTAAGTTAACCGTGGAT
GATGATGTGGCTGAGGGTACAATGGTGGGAGACCATACCCGTTTGGAGTCCACAACATTGAAACGGGAA
TCATGACTGAGAAAACGCTACATCTCCGTTGTCCCCTCCAGCTTTATTGGCCATCTGCAGAGCCTCATGTT
TAATGGCCTTCTCTACATTGACTTGTGCAAAAATGGTGACATTGATTATTGTGAGCTGAAGGCTCGTTTT



[View online »](#)

GGACTGAGGAACATCATCGCTGACCCTGTACCTTTAAGACCAAGAGCAGCTACCTGAGCCTTGCCACTC
TTCAGGCTTACACCTCCATGCACCTCTTCTCCAGTTCAAGACCCTCACCAGATGGCTTCATTCTCTT
CAATAGTGGTGATGGCAATGACTTCATTGCAGTCGAGCTTGTCAAGGGGTATACACTACGTTTTTGAC
CTCGGAAACGGTCCCAATGTGATCAAAGGCAACAGTGACCGCCCTGAATGACAACAGTGGCACAATG
TCGTCACTACTCGGACAATAGTAACACTCATAGCCTGAAAGTGGACACCAAAGTGGTCACTCAGTTAT
CAATGGTGCCAAAAATCTGGATTTGAAAGGTGATCTCTATATGGCTGGTCTGGCCCAAGGCATGACAGC
AACCTCCCAAAGCTCGTGGCCTCTCGAGATGGCTTTCAGGGCTGTCTAGCATCAGTGGACTTGAATGGAC
GCCTGCCAGACCTCATCAATGATGCTCTTCATCGGAGCGGACAGATCGAGCGTGGCTGTGAAGGACCCAG
TACCACCTGCCAGGAAGATTCATGTGCCAACAGGGGGTCTGCATGCAACAATGGGAGGGCTTACCTGT
GATTGTTCTATGACCTCTTATTCTGAAACCAAGTGAATGATCCTGGCGTACGTACATCTTTGGAAAA
GTGGTGGGCTTATCCTCTACACCTGGCCAGCCAATGACAGGCCAGCACGCGGTCTGACCGCTTCCGT
GGGCTTACAGCCACTGTGAAGGATGGCATCTTGGTCCGCATCGACAGTCTCCAGGACTTGGTACTTC
CTCCAGCTTACATAGAACAGGGGAAAATTGGAGTTGTCTTCAACATTGGCACAGTTGACATCTCCATCA
AAGAGGAGAGAACCCTGTAATGACGGCAAATACCATGTGTGACGTTACCAGGAACGGCGGCAACGC
CACCTGCAGGTGGACAACCTGGCCAGTGAATGAACATTATCCTACAGGCCGCGAGTTAACCATCTTCAAC
ACTCAGGCGCAAATAGCCATTGGTGGAAAGGACAAAGGACGCCTCTTCCAAGGCCAACTCTCTGGGCTCT
ATTATGATGGTTTAAAAGTACTGAACATGGCGGCTGAGAACAAACCCCAATATTAATAATCAATGGAAGTGT
TCGGCTGGTTGGAGAAGTCCCATCAATTTTGGGAACAACAGACGACCTCCATGCCACCAGAAATGTCT
ACTACTGTGATGGAAACCACTACTACAATGGCGACTACCACAACCCGTAAGAATCGCTCTACAGCCAGCA
TTCAGCCAACATCAGATGATCTTGTTCATCTGCTGAATGTTCAAGTGTGATGAAGACTTTGTTGAATG
TGAGCCGAGTACAGCAAACCCACGGAGCCGGGAATCAGACGGTTCCGGGGGCTCAGAGGTGATCCGG
GAGTCGAGCAGCACAACAGGGATGGTGTGCGCATTGTGGCTGTGCCGCCCTCTGCATCTTGATCTCC
TGTACGCCATGTACAAGTACAGGAACAGGGAGCGGGGCTCTATCAAGTGGACGAGACCGCGAACTACAT
CAGCAACTCCGCCAGAGCAACGGCAGCTCATGAAGGAGAAGCAGCAGAGCTCGAAGAGCGGCCACAAG
AAACAGAAAAACAGGACAGGGAGTATTACGTG

ACGCGTACGCGGCCGCTCGAGCAGAACTCATCTCAGAAGAGGATCTGGCAGCAAATGATATCCTGGATT
ACAAGGATGACGACGATAAGGTTTAA

Protein Sequence:

>RC223448 representing NM_004796
Red=Cloning site Green=Tags(s)

MLGSDDFVYVGGSPSTADLPGSPVSNFMGCLKEVYKNNDIRLELRLSRLARIADTKMKIYGEVVFKECENV
ATLDPIINFETPEAYISLPKWNTKRMGSI SFDRTTEPNGLILFTHGKQPQRKDARSQKNTKVDFFAVELL
DGNLYLLLDMGSGTIKVKATQKKANDGEWYHVDIQRDGRSGTISVNSRRTPFTASGESEILDLEGDMYLG
GLPENRAGLILPTELWTAMLNYGVGCI RDLFIDGRSKNIRQLAEMQNAAGVKSSCSRMSAKQCDSYPCK
NNAVCKDGNWRFICDCTGTGYWGRTCEREASILSYDGSMMYMKIIMPVMHTEAEDVSFRFMSQRAYGLLV
ATTSRDSADTLRLELDGGRVKLMVNLDCIRINCNSKGPETLYAGQKLNENEWHVTRVVRGKSLKLTVD
DDVAEGTMVGDHTRLEFHNIETGIMTEKRYISVVPSSF IGHQLSLMFNGLLYIDLCKNGDIDYCELKARF
GLRNIIADPVTFKTKSSYLSLTLQAYTSMHLFFQFKTTPDGFILFNSGDGNDFIAVELVKGYIHYVFD
LGNGPNVIKGNDRPLNDNQWHNVVITRDNSTHSLKVDTKVVTQVINGAKNLDLKGDLYAGLAQGMYS
NLPKLVASRDGFQGLASVDLNGRPLDLINDALHRSGQIERGCEGPSTTCQEDSCANQGVCMQQWEGFTC
DCSMTSYSGNQCNPDGATYIFGKSGGLILYTPANDRPSTRSDRLAVGFSTTVKDGILVRIDSAPGLGDF
LQLHIEQKIGVVFNIGTVDISIKEERTPVNDGKYHVVRFRNGGNATLQVDNWPVNEHYPTGRQLTIFN
TQAQIAIGGKDKGRLFQQLSGLYYDGLKVLNMAAENPNIKINGSVRLVGEVPSILGTTQTTSMPPEMS
TTVMETTTTMTATTTTRKNRSTASIQPTSDDLVSAAECSSDDEDFVECEPSTANPTEPGIRRVPGASEVIR
ESSSTTMVVGIVAAAALCILILLYAMYKYRNRDEGSYQVDETRNYISNSAQSNGLMKEKQSSKSGHK
KQKNKDREYVV

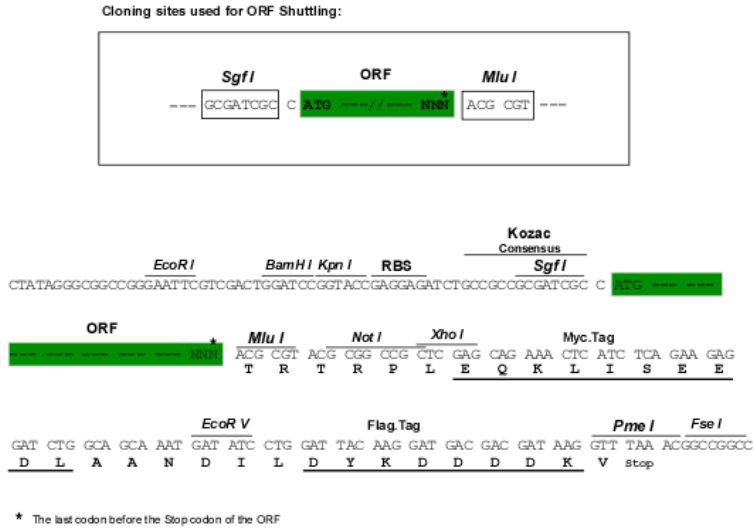
TRTRPLEQKLISEEDLAANDILDYKDDDDKV

Chromatograms:

https://cdn.origene.com/chromatograms/mk8008_b11.zip

Restriction Sites: SgfI-MluI

Cloning Scheme:



ACCN: NM_004796

ORF Size: 3183 bp

OTI Disclaimer: The molecular sequence of this clone aligns with the gene accession number as a point of reference only. However, individual transcript sequences of the same gene can differ through naturally occurring variations (e.g. polymorphisms), each with its own valid existence. This clone is substantially in agreement with the reference, but a complete review of all prevailing variants is recommended prior to use. [More info](#)

OTI Annotation: This clone was engineered to express the complete ORF with an expression tag. Expression varies depending on the nature of the gene.

Components: The ORF clone is ion-exchange column purified and shipped in a 2D barcoded Matrix tube containing 10ug of transfection-ready, dried plasmid DNA (reconstitute with 100 ul of water).

Reconstitution Method:

1. Centrifuge at 5,000xg for 5min.
2. Carefully open the tube and add 100ul of sterile water to dissolve the DNA.
3. Close the tube and incubate for 10 minutes at room temperature.
4. Briefly vortex the tube and then do a quick spin (less than 5000xg) to concentrate the liquid at the bottom.
5. Store the suspended plasmid at -20°C. The DNA is stable for at least one year from date of shipping when stored at -20°C.

RefSeq: [NM_004796.6](#)

RefSeq Size: 6148 bp

RefSeq ORF: 3186 bp

Locus ID: 9369

UniProt ID: [Q9Y4C0](#)

Cytogenetics: 14q24.3-q31.1

Domains: LamG, EGF, EGF

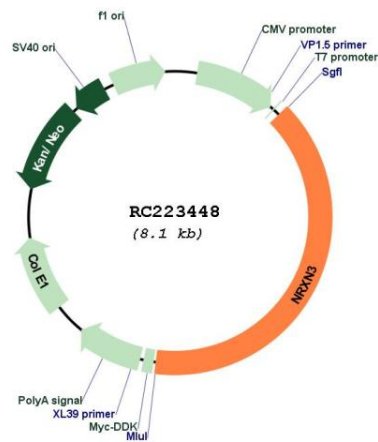
Protein Families: Druggable Genome, Transmembrane

Protein Pathways: Cell adhesion molecules (CAMs)

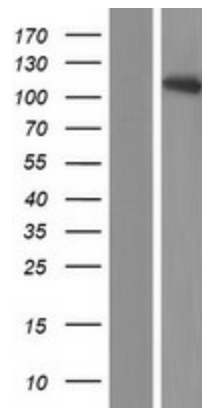
MW: 117.32 kDa

Gene Summary: This gene encodes a member of a family of proteins that function in the nervous system as receptors and cell adhesion molecules. Extensive alternative splicing and the use of alternative promoters results in multiple transcript variants and protein isoforms for this gene, but the full-length nature of many of these variants has not been determined. Transcripts that initiate from an upstream promoter encode alpha isoforms, which contain epidermal growth factor-like (EGF-like) sequences and laminin G domains. Transcripts initiating from the downstream promoter encode beta isoforms, which lack EGF-like sequences. Genetic variation at this locus has been associated with a range of behavioral phenotypes, including alcohol dependence and autism spectrum disorder. [provided by RefSeq, Dec 2012]

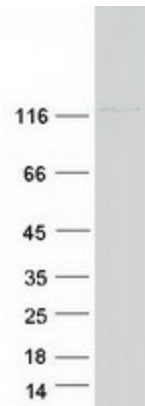
Product images:



Circular map for RC223448



Western blot validation of overexpression lysate (Cat# [LY417749]) using anti-DDK antibody (Cat# [TA50011-100]). Left: Cell lysates from untransfected HEK293T cells; Right: Cell lysates from HEK293T cells transfected with RC223448 using transfection reagent MegaTran 2.0 (Cat# [TT210002]).



Coomassie blue staining of purified NRXN3 protein (Cat# [TP323448]). The protein was produced from HEK293T cells transfected with NRXN3 cDNA clone (Cat# RC223448) using MegaTran 2.0 (Cat# [TT210002]).