

Product datasheet for **RC223445**

RNF35 (TRIM40) (NM_138700) Human Tagged ORF Clone

Product data:

Product Type:	Expression Plasmids
Tag:	Myc-DDK
Symbol:	RNF35
Synonyms:	RNF35
Mammalian Cell	Neomycin
Selection:	
Vector:	pCMV6-Entry (PS100001)
E. coli Selection:	Kanamycin (25 ug/mL)

ORF Nucleotide Sequence: >RC223445 representing NM_138700
Red=Cloning site Blue=ORF Green=Tags(s)

TTTTGTAATACGACTCACTATAGGGCGGCCGGAATTCGTCGACTGGATCCGGTACCGAGGAGATCTGCC
GCC**GCGATCGCC**

ATGATCCCTTTGCAGAAGGACAACCAGGAGGAGGGTGTCTGCCCATCTGCCAGGAGAGCCTGAAGGAGG
CCGTGAGCACCAACTGCGGACATCTTTCTGTGCGAGTGTGCCTGACACAGCATGTGGAGAAGGCCTCAGC
CTCTGGGGTCTTCTGCTGCCCCCTCTGCCGAAGCCCTGTTCTGAGGAGGTGCTAGGGACAGGCTATATC
TGCCCCAACCAACAGAGAGGGTGTGCAGTTCGTGAGGAGAGCAGACTTCTTCTATGTGTGGAATGCC
TGGTGTCCCTGAACACATGTCTCATCATGAACCTGACCATTGAAAATGCCCTCAGCCACTACAAGGAACG
ACTCAATCGCCGAGCAGGAAGCTCAGAAAGGACATTGCAGAACTTCAGCGGCTCAAGGCTCAGCAGGAG
AAGAACTGCAGGCTCTGCAGCAGTGGCTGGGCCAGCTGGAGCACATGCCAGCAGAAGCGGCCAGAAATCC
TTGACATCTCCAGGGCAGTAACACAGCTCAGAAGCCTGGTCATTGATCTGGAAGGACGGCCAAGGAATT
AGACACCAACACACTGAAGAAATGCTGGTGACTTACTGAACAGGAGTGCTCCACAGAAATTAGAGGTTATT
TATCCCGAGTTGGAGAAAGGAGTCAGTGAATTGCTTCTCAGCCCCCTCAGAAGCTC

ACGCGTACGCGGCCGCTCGAGCAGAACTCATCTCAGAAGAGGATCTGGCAGCAAATGATATCCTGGATT
ACAAGGATGACGACGATAAGGTTTAA



Protein Sequence:

>RC223445 representing NM_138700

Red=Cloning site Green=Tags(s)

MIPLQKDNQEEGVCPICQESLKEAVSTNCGHLFCRVCLTQHVEKASASGVFCCPLCRKPCSEEVLTGYI
CPNHQKRVCRCESRLLLCVECLVSPEHMSHHELT IENALSHYKERLNRSRKLRKDIAELQRLKAQQE
KKLQALQQWLQLEHMPAEAAAILDISRAVTQLRSLVIDLERTAKELDTNTLKNAGDLLNRSAPQKLEVI
YPQLEKGVSELLLPQPKL

TRTRPLEQKLISEEDLAANDILDYKDDDDKV

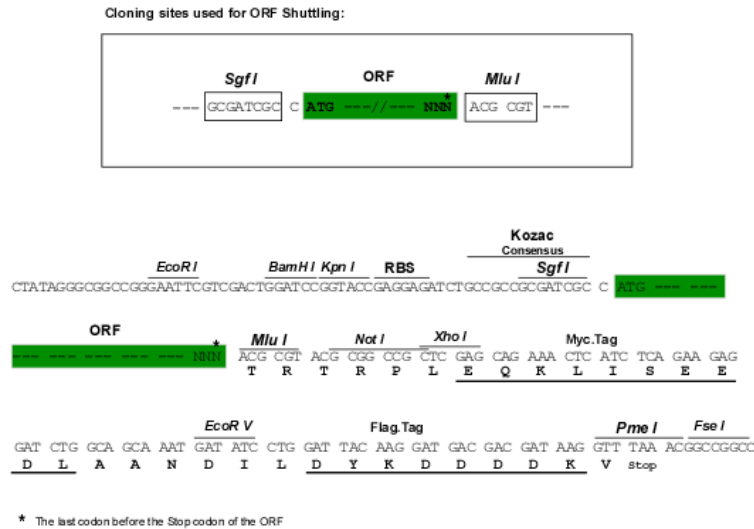
Chromatograms:

https://cdn.origene.com/chromatograms/mk8047_a12.zip

Restriction Sites:

SgfI-MluI

Cloning Scheme:



ACCN:

NM_138700

ORF Size:

687 bp

OTI Disclaimer:

The molecular sequence of this clone aligns with the gene accession number as a point of reference only. However, individual transcript sequences of the same gene can differ through naturally occurring variations (e.g. polymorphisms), each with its own valid existence. This clone is substantially in agreement with the reference, but a complete review of all prevailing variants is recommended prior to use. [More info](#)

OTI Annotation:

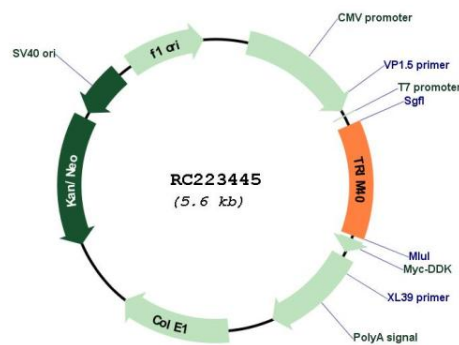
This clone was engineered to express the complete ORF with an expression tag. Expression varies depending on the nature of the gene.

Components:

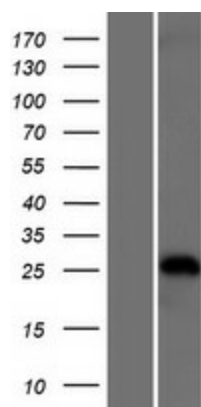
The ORF clone is ion-exchange column purified and shipped in a 2D barcoded Matrix tube containing 10ug of transfection-ready, dried plasmid DNA (reconstitute with 100 ul of water).

Reconstitution Method:	<ol style="list-style-type: none"> 1. Centrifuge at 5,000xg for 5min. 2. Carefully open the tube and add 100ul of sterile water to dissolve the DNA. 3. Close the tube and incubate for 10 minutes at room temperature. 4. Briefly vortex the tube and then do a quick spin (less than 5000xg) to concentrate the liquid at the bottom. 5. Store the suspended plasmid at -20°C. The DNA is stable for at least one year from date of shipping when stored at -20°C.
Note:	Plasmids are not sterile. For experiments where strict sterility is required, filtration with 0.22um filter is required.
RefSeq:	<u>NM_138700.4</u>
RefSeq Size:	997 bp
RefSeq ORF:	690 bp
Locus ID:	135644
UniProt ID:	<u>Q6P9F5</u>
Cytogenetics:	6p22.1
MW:	25.9 kDa
Gene Summary:	This gene encodes a member of the tripartite motif (TRIM) protein family. The encoded protein may play a role as a negative regulator against inflammation and carcinogenesis in the gastrointestinal tract. Alternatively spliced transcript variants that encode different protein isoforms have been described. [provided by RefSeq, Feb 2014]

Product images:



Circular map for RC223445



Western blot validation of overexpression lysate (Cat# [LY408550]) using anti-DDK antibody (Cat# [TA50011-100]). Left: Cell lysates from un-transfected HEK293T cells; Right: Cell lysates from HEK293T cells transfected with RC223445 using transfection reagent MegaTran 2.0 (Cat# [TT210002]).