

Product datasheet for **RC223431**

GDPD1 (NM_182569) Human Tagged ORF Clone

Product data:

Product Type:	Expression Plasmids
Product Name:	GDPD1 (NM_182569) Human Tagged ORF Clone
Tag:	Myc-DDK
Symbol:	GDPD1
Synonyms:	GDE4
Mammalian Cell Selection:	Neomycin
Vector:	pCMV6-Entry (PS100001)
E. coli Selection:	Kanamycin (25 ug/mL)
ORF Nucleotide Sequence:	>RC223431 representing NM_182569 Red=Cloning site Blue=ORF Green=Tags(s)

TTTTGTAATACGACTCACTATAGGGCGCCGGGAATTCGTCGACTGGATCCGGTACCGAGGAGATCTGCC
GCC**CGATCGCC**

ATGTCGTCCTACTGCGGCTTTTTACCTTCTCTACGCTAGGAGGATACTGGTGACCTCATTCTTGTTC
TTAAATACCCGACCTTGCTGCACCAGAGAAAGAAGCAGCGATTCCCTCAGTAAACACATCTCACCAGCG
AGGTGCTGGAGAAAATTTGGAGAATAACAATGGCAGCCTTCAGCATGCGGTTAAAATCGGAAGTATACG
CTAGAATTGGACTGCCATATCACAAAAGATGAACAAGTTGTAGTGCACATGATGAGAATCTAAAGAGAG
CAACTGGGGTCAATGTAACATCTCTGATCTCAAATACTGTGAGCTCCACCTTACCTTGGCAAAGTGA
TGTCTCATTTCAAAGAGCATGCCAGTGTGAAGGAAAAGATAACCGAATTCATTACTGAAGGAAGTTTT
GAGGCCTTTCCTAACACTCCCATTAACATCGATATCAAAGTCAACAACAATGTGCTGATTAAGAAGTTT
CAGAGTTGGTGAAGCGGTATAATCGAGAACAACCTAACAGTGTGGGGTAATGCCAATTATGAAATTGAGA
AAAGTGCTACAAAGAGAATTCAGATATTCCTATACTCTCAGTCTACAACGTGCTCCTGCTCATTCTTGGC
CTTTTCTCACTGGCCTCTTGCCCTTTGTGCCATTTCGAGAACAGTTTTTTGAAATCCCAATGCCTTCTA
TTATACTGAAGCTAAAAGAACCACACCATGTCCAGAAGTCAAAGTTTCTCATCTGGCTTCTGATCT
CTTACTAATGAGGAAAGCTTTGTTTGACCACCTAACTGCTCGAGGCATCAAGTGATATTTGGGTATTA
AATGAAGAACAAGAATACAAAAGAGCTTTTGATTTGGGAGCAACTGGGGTGATGACAGACTATCCAACAA
AGCTTAGGGATTTTTACATAACTTTTCAGCA

ACGCGTACGCGGCCGCTCGAGCAGAAACTCATCTCAGAAGAGGATCTGGCAGCAAATGATATCCTGGATT
ACAAGGATGACGACGATAAGGTTTAA



[View online »](#)

Protein Sequence: >RC223431 representing NM_182569
Red=Cloning site Green=Tags(s)

MSSTAIFYLLSTLGGYL VTSFLLLKYPTLLHQKQKQRF LSKHISHRGGAGENLENTMAAFQHAVKIGTDT
 LELDCHITKDEQVVVSHDENLKRATGVNVNISDLKYCELPPYLGLKDV SFQRACQCEGKDNRIPLLKEVF
 EAFPNTPIINIDIKVNNVLIKKVSELVKRYNREHLTVWGNANYEIVEKCYKENS DIPILFSLQRVLLILG
 LFFTGLLPFVPIREQFFEIPMPSIILKLEPHTMSRSQKFLIWLSDLLL MRKALFDHLTARGIQVYIWWL
 NEEQEYKRAFDLGATGVM TDYPTKLRDFLHN FSA

TRTRPLEQKLISEEDLAANDILDYKDDDDKV

Chromatograms: https://cdn.origene.com/chromatograms/mk8013_e11.zip

Restriction Sites: SgfI-MluI

Cloning Scheme:



ACCN: NM_182569

ORF Size: 942 bp

OTI Disclaimer: The molecular sequence of this clone aligns with the gene accession number as a point of reference only. However, individual transcript sequences of the same gene can differ through naturally occurring variations (e.g. polymorphisms), each with its own valid existence. This clone is substantially in agreement with the reference, but a complete review of all prevailing variants is recommended prior to use. [More info](#)

OTI Annotation: This clone was engineered to express the complete ORF with an expression tag. Expression varies depending on the nature of the gene.

Components: The ORF clone is ion-exchange column purified and shipped in a 2D barcoded Matrix tube containing 10ug of transfection-ready, dried plasmid DNA (reconstitute with 100 ul of water).

Reconstitution Method:

1. Centrifuge at 5,000xg for 5min.
2. Carefully open the tube and add 100ul of sterile water to dissolve the DNA.
3. Close the tube and incubate for 10 minutes at room temperature.
4. Briefly vortex the tube and then do a quick spin (less than 5000xg) to concentrate the liquid at the bottom.
5. Store the suspended plasmid at -20°C. The DNA is stable for at least one year from date of shipping when stored at -20°C.

RefSeq: [NM_182569.2](#)

RefSeq Size: 1822 bp

RefSeq ORF: 945 bp

Locus ID: 284161

UniProt ID: [Q8N9F7](#)

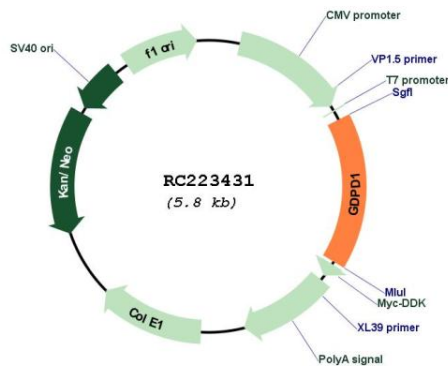
Cytogenetics: 17q22

Protein Families: Transmembrane

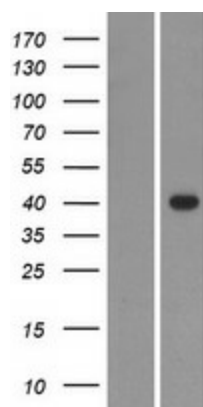
MW: 36 kDa

Gene Summary: This gene encodes a member of the glycerophosphodiester phosphodiesterase family of enzymes that catalyze the hydrolysis of deacylated glycerophospholipids to glycerol phosphate and alcohol. The encoded protein is localized to the cytoplasm and concentrates near the perinuclear region. Alternative splicing results in multiple transcript variants. [provided by RefSeq, Oct 2009]

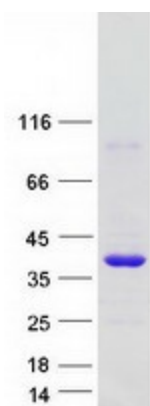
Product images:



Circular map for RC223431



Western blot validation of overexpression lysate (Cat# [LY405490]) using anti-DDK antibody (Cat# [TA50011-100]). Left: Cell lysates from untransfected HEK293T cells; Right: Cell lysates from HEK293T cells transfected with RC223431 using transfection reagent MegaTran 2.0 (Cat# [TT210002]).



Coomassie blue staining of purified GDPD1 protein (Cat# [TP323431]). The protein was produced from HEK293T cells transfected with GDPD1 cDNA clone (Cat# RC223431) using MegaTran 2.0 (Cat# [TT210002]).