

Product datasheet for **RC223425**

PPA2 (NM_001034191) Human Tagged ORF Clone

Product data:

Product Type:	Expression Plasmids
Product Name:	PPA2 (NM_001034191) Human Tagged ORF Clone
Tag:	Myc-DDK
Symbol:	PPA2
Synonyms:	FLJ20459; HSPC124; inorganic pyrophosphatase 2; MGC49850; pyrophosphatase (inorganic) 2; SID6-306
Mammalian Cell Selection:	Neomycin
Vector:	pCMV6-Entry (PS100001)
E. coli Selection:	Kanamycin (25 ug/mL)
ORF Nucleotide Sequence:	>RC223425 representing NM_001034191 Red=Cloning site Blue=ORF Green=Tags(s)

TTTTGTAATACGACTCACTATAGGGCGGCCGGAATTCGTCGACTGGATCCGGTACCGAGGAGATCTGCC
GCC**CGATCGCC**

ATGAGCGCGCTGCTGCGGCTGCTGCGCACGGGTGCCCCAGCCGCTGCGTGCCTGCGGTTGGGGACCAAGTGCAGGGACCGGGTCGCGCGTGTATGGCCCTGTACCACACTGAGGAGCGCGGCCAGCCCTGCTCGCAGAA
TTACCGCCTCTTCTTTAAGAATGTAAGTGGTCACTACATTTCCCCCTTTCATGATATTCCTCTGAAGGTG
AACTCTAAAGAGGAAAAATGGCATTCTATGAAGAAAGCACGAAATGATGAATATGAGATTGCCACCAAGG
AGCCAATGAATCCATTAACAATATGTAAGGATGGAAAGCTACGCTATGTGGCGAATATCTTCCCTTA
CAAGGGTTATATGGAATTATGGTACCCTCCCTCAGACTTGGGAAGATCCCATGAAAAAGATAAGAGC
ACGAAGTCTTTGGAGATAATGATCCTATTGATGTTTGGCAAATAGGCTCAAAGATCTTTCTTGTGGAG
AAGTTATTCATGTGAAGATCCTTGAATTTGGCTCTTATTGATGAAGGTGAAACAGATTGGAAATTAAT
TGCTATCAATGCGAATGATCCTGAAGCCTCAAAGTTTCATGATATTGATGATGTTAAGAAGTTCAAACCG
GGTTACCTGGAAGCTACTCTTAATTGGTTTAGATTATATAAGGTACCAGATGGAAAACGAGAAAACCAAGT
TTGCTTTTAAATGGAGAATCAAAAACAAGGCTTTTGGCTCTTGAAGTTATTAATCCACTCATCAATGTTG
GAAAGCATTGCTTATGAAGAAGTGAATGGAGGAGCTATAAATGCACAAACGTGCAGATATCTGATAGC
CCTTTCCGTTGCACTCAAGAGGAAGCAAGATCATTAGTTGAATCGGTATCATCTTACCAATAAAGAAA
GTAATGAAGAAGGCAAGTGTGGCACTTCTTGGCAAG

ACGCGTACGCGGCCGCTCGAGCAGAAACTCATCTCAGAAGAGGATCTGGCAGCAAATGATATCCTGGATT
ACAAGGATGACGACGATAAGGTTTAA



[View online »](#)

Reconstitution Method:

1. Centrifuge at 5,000xg for 5min.
2. Carefully open the tube and add 100ul of sterile water to dissolve the DNA.
3. Close the tube and incubate for 10 minutes at room temperature.
4. Briefly vortex the tube and then do a quick spin (less than 5000xg) to concentrate the liquid at the bottom.
5. Store the suspended plasmid at -20°C. The DNA is stable for at least one year from date of shipping when stored at -20°C.

RefSeq: [NM_001034191.1](#), [NP_001029363.1](#)

RefSeq Size: 1628 bp

RefSeq ORF: 950 bp

Locus ID: 27068

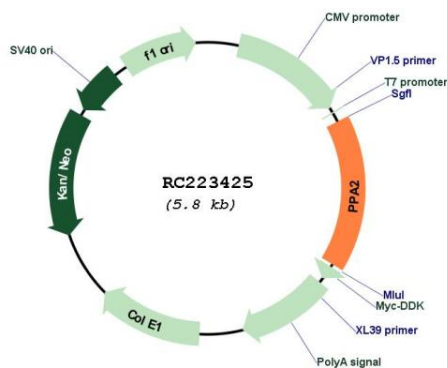
Cytogenetics: 4q24

Protein Pathways: Oxidative phosphorylation

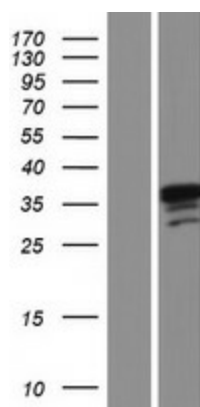
MW: 35.73 kDa

Gene Summary: The protein encoded by this gene is localized to the mitochondrion, is highly similar to members of the inorganic pyrophosphatase (PPase) family, and contains the signature sequence essential for the catalytic activity of PPase. PPases catalyze the hydrolysis of pyrophosphate to inorganic phosphate, which is important for the phosphate metabolism of cells. Alternate transcriptional splice variants, encoding different isoforms, have been characterized. [provided by RefSeq, Jul 2008]

Product images:



Circular map for RC223425



Western blot validation of overexpression lysate (Cat# [LY421959]) using anti-DDK antibody (Cat# [TA50011-100]). Left: Cell lysates from untransfected HEK293T cells; Right: Cell lysates from HEK293T cells transfected with RC223425 using transfection reagent MegaTran 2.0 (Cat# [TT210002]).