

Product datasheet for RC223419

RPH3AL (NM_006987) Human Tagged ORF Clone

Product data:

Product Type:	Expression Plasmids
Product Name:	RPH3AL (NM_006987) Human Tagged ORF Clone
Tag:	Myc-DDK
Symbol:	RPH3AL
Synonyms:	NOC2
Mammalian Cell Selection:	Neomycin
Vector:	pCMV6-Entry (PS100001)
E. coli Selection:	Kanamycin (25 ug/mL)
ORF Nucleotide Sequence:	>RC223419 representing NM_006987 Red=Cloning site Blue=ORF Green=Tags(s)

TTTTGTAATACGACTCACTATAGGGCGGCCGGAATTCGTCGACTGGATCCGGTACCGAGGAGATCTGCC
GCC**CGATCGCC**

ATGGCCGACACCATCTTCGGCAGCGGGAATGATCAGTGGGTTTGCCCAATGACCGGCAGCTTGCCCTTC
GAGCCAAGCTGCAGACGGGCTGGTCCGTGCACACCTACCAGACGGAGAAGCAGAGGAGGAAGCAGCACCT
CAGCCCGCGGAGGTGGAGGCCATCCTGCAGGTCATCCAGAGGGCAGAGCGGCTCGACGCTCTGGAGCAG
CAGAGAATCGGGCGGCTGGTGGAGCGGCTGGAGACCATGAGGCGGAATGTGATGGGAACGGCCTGTCCC
AGTGTCTGCTCTGCGGGAGGTGCTGGGCTTCCGGGCAGCTCGTCGGTGTCTGCAAAGACTGCAGGAA
GAAAGTCTGCACCAAATGTGGATCGAGGCCTCCCTGGCCAGAAGCGGCCCTGTGGCTGTGTAAGATC
TGCACTGAGCAAAGAGAGGTCTGGAAGAGTGGGGGCTGGTTCTACAAAGGGCTCCCCAAGTATATCT
TGCCCTGAAGACCCCTGGCCGAGCTGATGACCCCACTCCGACCTTTGCCACGGAACCGGCAGAGCG
AGAGCCCAGAAGCTCTGAGACCAGCCGATCTACACGTGGGCCCGAGGAAGAGTGGTTTCCAGTGACAGT
GACAGTGACTCGGATCTTAGCTCCTCCAGCCTAGAGGACAGACTCCCATCCAAGGGTCCAGGGACCGGA
AAGGCGACAAACCCTGGAAGGAGTCAGGTGGCAGCGTGGAGGCCCGGATGGGGTTACCCACCCGCC
GGGCCACCTCTGGGTGCCAGAGCAGCCTGGCCAGTGGTGAGACGGGGACAGGCTCTGCTGACCCGCCA
GGGGACCCCGCCCGGCTGACCGAAGGGCCCGGTAAGACACACCTGGACGAGCCCCGCTGCTG
ACGCAGCTCCAGCAGGCCCTCCAGCTGCCTGGGC

ACGCGTACGCGGCCGCTCGAGCAGAACTCATCTCAGAAGAGGATCTGGCAGCAATGATATCCTGGATT
ACAAGGATGACGACGATAAGGTTTAA



[View online »](#)

Protein Sequence: >RC223419 representing NM_006987
Red=Cloning site Green=Tags(s)

MADTIFGSGNDQWVCPNDRQLALRAKLQTGWSVHTYQTEKQRRKQHLSPAEEVAILQVIQRAERLDVLEQ
 QRIGRLVERLETMRNVMGNGLSQCLLCGEVLGFLGSSSVFCKDCRKKVCTKCGIEASPGQKRPLWLCIKI
 CSEQREVWKRSGAWFYKGLPKYILPLKTPGRADDPHFRPLPTEPAEREPRSSSETSRIYTWARGRVSSDS
 DSDSDLSSSLEDRLPSTGVRDRKGDKPWKEGGSVVEAPRMGFTHPPGHLSGCQSSLASGETGTGSADPP
 GGPRPGLTRRAPVKDTPGRAPAADAAPAGPSSCLG

TRTRPLEQKLISEEDLAANDILDYKDDDDKV

Chromatograms: https://cdn.origene.com/chromatograms/mk6484_d08.zip

Restriction Sites: SgfI-MluI

Cloning Scheme:



ACCN: NM_006987

ORF Size: 945 bp

OTI Disclaimer: The molecular sequence of this clone aligns with the gene accession number as a point of reference only. However, individual transcript sequences of the same gene can differ through naturally occurring variations (e.g. polymorphisms), each with its own valid existence. This clone is substantially in agreement with the reference, but a complete review of all prevailing variants is recommended prior to use. [More info](#)

OTI Annotation: This clone was engineered to express the complete ORF with an expression tag. Expression varies depending on the nature of the gene.

Components: The ORF clone is ion-exchange column purified and shipped in a 2D barcoded Matrix tube containing 10ug of transfection-ready, dried plasmid DNA (reconstitute with 100 ul of water).

Reconstitution Method:

1. Centrifuge at 5,000xg for 5min.
2. Carefully open the tube and add 100ul of sterile water to dissolve the DNA.
3. Close the tube and incubate for 10 minutes at room temperature.
4. Briefly vortex the tube and then do a quick spin (less than 5000xg) to concentrate the liquid at the bottom.
5. Store the suspended plasmid at -20°C. The DNA is stable for at least one year from date of shipping when stored at -20°C.

RefSeq: [NM_006987.4](#)

RefSeq Size: 2610 bp

RefSeq ORF: 948 bp

Locus ID: 9501

UniProt ID: [Q9UNE2](#)

Cytogenetics: 17p13.3

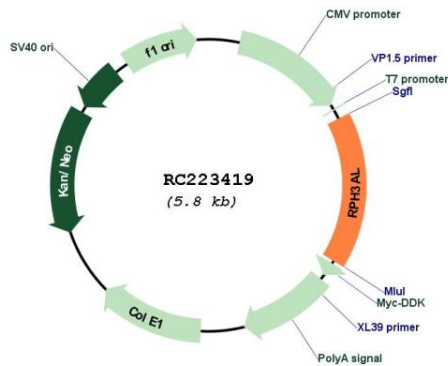
Domains: RPH3A_effector

Protein Families: Secreted Protein

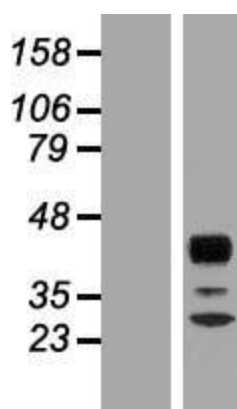
MW: 34.3 kDa

Gene Summary: The protein encoded by this gene plays a direct regulatory role in calcium-ion-dependent exocytosis in both endocrine and exocrine cells and plays a key role in insulin secretion by pancreatic cells. This gene is likely a tumor suppressor. Alternative splicing results in multiple transcript variants encoding distinct isoforms. [provided by RefSeq, Jun 2010]

Product images:



Circular map for RC223419



Western blot validation of overexpression lysate (Cat# [LY416270]) using anti-DDK antibody (Cat# [TA50011-100]). Left: Cell lysates from untransfected HEK293T cells; Right: Cell lysates from HEK293T cells transfected with RC223419 using transfection reagent MegaTran 2.0 (Cat# [TT210002]).