

## Product datasheet for RC223417

### SLC35C2 (NM\_173179) Human Tagged ORF Clone

#### Product data:

Product Type:	Expression Plasmids
Product Name:	SLC35C2 (NM_173179) Human Tagged ORF Clone
Tag:	Myc-DDK
Symbol:	SLC35C2
Synonyms:	BA394O2.1; C20orf5; CGI-15; OVCOV1
Mammalian Cell Selection:	Neomycin
Vector:	pCMV6-Entry (PS100001)
E. coli Selection:	Kanamycin (25 ug/mL)
ORF Nucleotide Sequence:	>RC223417 ORF sequence Red=Cloning site Blue=ORF Green=Tags(s)

TTTTGTAATACGACTCACTATAGGGCGCCGGGAATTCGTCGACTGGATCCGGTACCGAGGAGATCTGCC  
GCC**CGATCGCC**

ATGGGGAGGTGGGCCCTCGATGTGGCCTTTTTGTGGAAGGCGGTGTTGACCCTGGGGCTGGTGCTTCTCT  
ACTACTGCTTCTCCATCGGCATCACCTTCTACAACAAGTGGCTGACAAAGAGCTTCCATTTCCCCTCTT  
CATGACGATGCTGCACCTGGCCGTGATCTTCTCTTCTCCGCCCTGTCCAGGGCGCTGGTTCAGTGCTCC  
AGCCACAGGGCCCGTGTGGTGTGAGCTGGGCCGACTACCTCAGAAGAGTGGCTCCACAGCTCTGGCGA  
CGGCGCTTGACGTGGGCTTGTCCAAGTGGAGCTTCTGTATGTCACCGTCTCGCTGTACACAATGACCAA  
ATCCTCAGCTGTCTTTCATCTTGATCTTCTCTGATCTTCAAGCTGGAGGAGCTGCGCGCGGCACTG  
GTCCTGGTGGTCTCTCATCGCCGGGGTCTCTTCATGTTACCTACAAGTCCACACAGTTCAACGTGG  
AGGGCTTCGCCTTGGTGTGGGGCCCTCGTTCATCGGTGGCATTGCTGGACCCTCACCCAGATGCTCCT  
GCAGAAGGCTGAACTCGGCCTCCAGAAATCCCATCGACACCATGTTCCACCTGCAGCCACTCATGTTCTG  
GGGCTCTCCCTCTTTTGTGTATTTGAAGGTCTCCATTTGTCCACATCTGAGAAAACTTCCGTTTCC  
AGGACACAGGGCTGCTCCTGCGGGTACTTGGGAGCCTCTTCTTGGCGGGATTCTCGCCTTTGGTTTGGG  
CTTCTCTGAGTTCTCCTGGTCTCCAGAACCTCCAGCCTCACTCTCTCCATTGCCGGCATTTTTAAGGAA  
CCTCTGCTCTCGGGAATATCCCTCCAGTTGCCCTCAAAGCCCTGCATTCCAGAGGTGATGGTGCC  
CAAGGCCCTTGAAGGGGCTGGGCTCCAGCCCGACCTGGAGCTGCTGCTCCGGAGCAGCCAGCGGGAGGAA  
GGTGACAATGAGGAGGAGGAGTACTTTGTGGCCAGGGGAGCAG

**ACGCGT**ACGCGGCCGCTCGAGCAGAAACTCATCTCAGAAGAGGATCTGGCAGCAAATGATATCCTGGATT  
ACAAGGATGACGACGATAAGGTTAA



[View online »](#)

**Protein Sequence:** >RC223417 protein sequence  
Red=Cloning site Green=Tags(s)

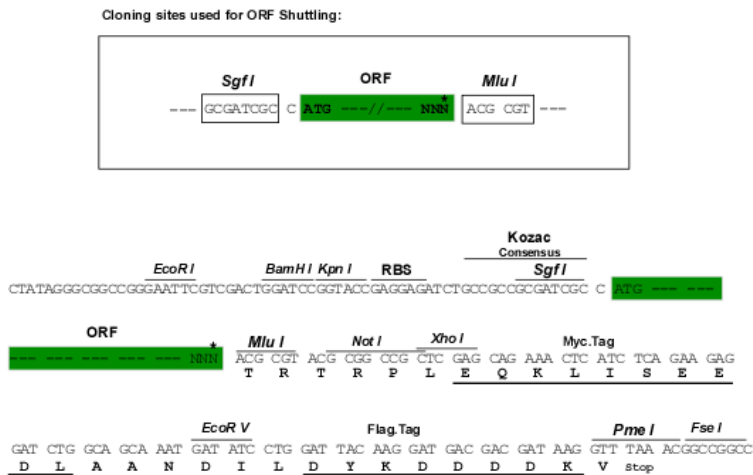
MGRWALDVAFLWKAVLTLGLVLLYYCFSIGITFYNKWLTKSFHFPLFMTMLHLAVIFLFSALSRALVQCS  
 SHRARVVL SWADYLRRVAPTALATALDVGLSNWSFLYVTVSLYMTKSSAVLFILIFSLIFKLEELRAAL  
 VLVLLIAGGLFMFTYKSTQFNVEGFALVLGASFIGGIRWTLTQMLLQKAELGLQNPIDTMFHLQPLMFL  
 GLFPLFAVFEGLHLSTSEKIFRFQDTGLLLRLVLSLFLGGILAFGLGFSEFLLVSRSSLTLSIAGIFKE  
 VCTLLLAHLLGDQISLLNWLGFALCLSGISLHVALKALHSRGGGPKALKKGLGSSPDLELLLRSQREE  
 GDNEEEYFVAQGGQ

TRTRPLEQKLISEEDLAANDILDYKDDDDKV

**Chromatograms:** [https://cdn.origene.com/chromatograms/mk6433\\_h12.zip](https://cdn.origene.com/chromatograms/mk6433_h12.zip)

**Restriction Sites:** SgfI-MluI

**Cloning Scheme:**



\* The last codon before the Stop codon of the ORF

**ACCN:** NM\_173179

**ORF Size:** 1095 bp

**OTI Disclaimer:** The molecular sequence of this clone aligns with the gene accession number as a point of reference only. However, individual transcript sequences of the same gene can differ through naturally occurring variations (e.g. polymorphisms), each with its own valid existence. This clone is substantially in agreement with the reference, but a complete review of all prevailing variants is recommended prior to use. [More info](#)

**OTI Annotation:** This clone was engineered to express the complete ORF with an expression tag. Expression varies depending on the nature of the gene.

**Components:** The ORF clone is ion-exchange column purified and shipped in a 2D barcoded Matrix tube containing 10ug of transfection-ready, dried plasmid DNA (reconstitute with 100 ul of water).

**Reconstitution Method:**

1. Centrifuge at 5,000xg for 5min.
2. Carefully open the tube and add 100ul of sterile water to dissolve the DNA.
3. Close the tube and incubate for 10 minutes at room temperature.
4. Briefly vortex the tube and then do a quick spin (less than 5000xg) to concentrate the liquid at the bottom.
5. Store the suspended plasmid at -20°C. The DNA is stable for at least one year from date of shipping when stored at -20°C.

**RefSeq:** [NM\\_173179.4](#)

**RefSeq Size:** 2520 bp

**RefSeq ORF:** 1098 bp

**Locus ID:** 51006

**UniProt ID:** [Q9NQQ7](#)

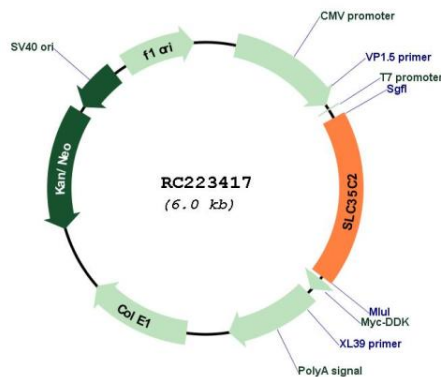
**Cytogenetics:** 20q13.12

**Protein Families:** Druggable Genome, Transmembrane

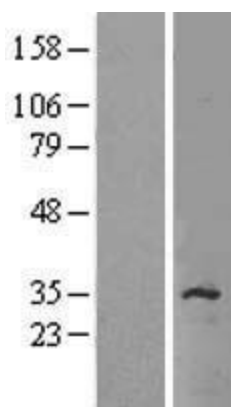
**MW:** 40.4 kDa

**Gene Summary:** This gene encodes a member of the triose-phosphate transporter protein family. This gene is regulated by oxygen tension, is induced in hypoxic trophoblast cells, and is overexpressed in ovarian cancer. Alternative splicing results in multiple transcript variants. A pseudogene of this gene has been defined on the X chromosome. [provided by RefSeq, Jul 2013]

**Product images:**



Circular map for RC223417



Western blot validation of overexpression lysate (Cat# [LY406636]) using anti-DDK antibody (Cat# [TA50011-100]). Left: Cell lysates from untransfected HEK293T cells; Right: Cell lysates from HEK293T cells transfected with RC223417 using transfection reagent MegaTran 2.0 (Cat# [TT210002]).