

Product datasheet for RC223416

CCK4 (PTK7) (NM_152880) Human Tagged ORF Clone

Product data:

Product Type:	Expression Plasmids
Product Name:	CCK4 (PTK7) (NM_152880) Human Tagged ORF Clone
Tag:	Myc-DDK
Symbol:	CCK4
Synonyms:	CCK-4; CCK4
Mammalian Cell Selection:	Neomycin
Vector:	pCMV6-Entry (PS100001)
E. coli Selection:	Kanamycin (25 ug/mL)
ORF Nucleotide Sequence:	>RC223416 representing NM_152880 Red=Cloning site Blue=ORF Green=Tags(s)

TTTTGTAATACGACTCACTATAGGGCGGCCGGGAATTCGTCGACTGGATCCGGTACCGAGGAGATCTGCC
GCC**CGATCGCC**

ATGGGAGCTGCGCGGGGATCCCCGCCAGACCCCGCCGGTTGCCTCTGCTCAGCGTCTGCTGCTGCCGC
TGCTGGGCGGTACCCAGACAGCCATTGTCTTCATCAAGCAGCCGTCCTCCAGGATGCACTGCAGGGGCG
CCGGGCGTCTCGCTGTGAGGTTGAGGCTCCGGGCCGGTACATGTGTACTGGCTGCTCGATGGGGCC
CCTGTCCAGGACCGGAGCGGCTTTCGCCAGGGCAGCAGCCTGAGCTTTCAGCTGTGGACCGGCTGC
AGGACTCTGGCACCTCCAGTGTGTGGCTCGGGATGATGTCACTGGAGAAGAAGCCCGCAGTGCCAAACGC
CTCCTTCAACATCAAATGGATTGAGGCAGTCTGTGGTCTGAAGCATCCAGCCTCGGAAGCTGAGATC
CAGCCACAGACCCAGGTCACACTTCGTTGCCACATTGATGGGCACCCCTCGGCCACCTACCAATGTTCC
GAGATGGGACCCCTTTCTGATGGTCAGAGCAACCACACAGTCAGCAGCAAGGAGCGGAACCTGACGCT
CCGGCCAGCTGGTCTGAGCATAGTGGGCTGTATTCTGCTGCGCCACAGTGTCTTTGGCCAGGCTTGC
AGCAGCCAGAACTTACCTTGAGCATTGCTGATGAAAGCTTTGCCAGGGTGGTGTGACCCCAAGGACG
TGGTAGTAGCGAGGTATGAGGAGCCATGTTCCATTGCCAGTTCAGCCAGCCACCCCGAGCCTGCA
TTGGCTCTTTGAGGATGAGACTCCCATCACTAACCAGTCCGCCCCACACCTCCGCAGAGCCACAGTG
TTTGCCAAACGGTCTCTGCTGTGACCCAGGTCGGGCCACGCAATGCAGGGATCTACCGTGCATTGGCC
AGGGGCAGAGGGGCCACCCATCATCTGGAAGCCACACTTCACCTAGCAGAGATTGAAGACATGCCGCT
ATTTGAGCCACGGGTGTTTACAGCTGGCAGCGAGGAGCGTGTGACCTGCCTTCCCCCAAGGGTCTGCCA
GAGCCAGCGTGTGGTGGGAGCACGCGGGAGTCCGGCTGCCACCCATGGCAGGGTCTACCAAGAAGGGCC
ACGAGCTGGTGTGGCCAATATTGCTGAAAGTGTGCTGGTGTCTACACCTGCCACGCGGCCAACCTGGC
TGGTCAGCGGAGACAGGATGTCAACATCACTGTGGCCACTGTGCCCTCTGGCTGAAGAAGCCCCAAGAC
AGCCAGCTGGAGAGGGCAAACCCGGCTACTTGGATTGCCTGACCCAGGCCACACCAAAACCTACAGTTG
TCTGGTACAGAAACCAGATGCTCATCTCAGAGGACTCACGGTTCGAGGTCTTCAAGAATGGGACCTTGGC
CATCAACAGCGTGGAGGTGATGATGGGACATGGTACCGTTGATGAGCAGCACCCAGCCGGCAGCATC



GAGGCGCAAGCCCGTGTCCAAGTCTGGATGGGAGCAGCCTCCCAGAGTGGGTGACAGACAACGCTGGGA
 CCCTGCATTTTGGCCGGGTGACTCGAGATGACGCTGGCAACTACACTTGCATTGCCTCCAACGGGCCGCA
 GGGCCAGATTCGTGCCCATGTCCAGTCACTGTGGCAGTTTTTATCACCTTCAAAGTGAACAGAGCGT
 ACGACTGTGTACCAGGGCCACACAGCCCTACTGCAGTGCAGGGCCAGGGAGACCCCAAGCCGCTGATTC
 AGTGGAAGGCAAGGACCGCATCCTGGACCCCAAGCTGGGACCCAGGATGCACATCTCCAGAATGG
 CTCCCTGGTGATCCATGACGTGGCCCTGAGGACTCAGGCCGCTACACCTGCATTGCAGGCAACAGCTGC
 AACATCAAGCACACGGAGCCCCCTCTATGTCGTGGACAAGCCTGTGCCGGAGGATCGGAGGGCCCTG
 GCAGCCCTCCCCCTACAAGATGATCCAGACCATTGGGTTGTCGGTGGGTGCCGCTGTGGCCTACATCAT
 TGCCGTGCTGGGCCTCATGTTCTACTGCAAGAAGCGCTGCAAAGCCAAGCGGCTGCAGAAGCAGCCCGAG
 GGCGAGGAGCCAGAGATGGAATGCCTCAACGGTGGGCCTTTCAGAACGGGCAGCCCTCAGCAGAGATCC
 AAGAAGAAGTGGCCTTGACCAGCTTGGGCTCCGGCCCCGGGCCACCAACAAACGCCACAGCACAAGTGA
 TAAGATGCACTTCCACGGTCTAGCCTGCAGCCCATACCACGCTGGGGAAGAGTGAGTTGGGGAGGTG
 TTCCTGGCAAAGGCTCAGGGCTTGGAGGAGGAGTGGCAGAGACCCTGGTACTTGTGAAGAGCCTGCAGA
 GCAAGGATGAGCAGCAGCAGCTGGACTTCCGGAGGGAGTTGGAGATGTTTGGGAAGCTGAACCACGCCAA
 CGTGGTGGGCTCCTGGGCTGTCCGGGAGGCTGAGCCCACTACATGGTGTGGAATATGTGGATCTG
 GGAGACCTCAAGCAGTTCCTGAGGATTTCCAAGAGCAAGGATGAAAAATTGAAGTACAGCCCTCAGCA
 CCAAGCAGAAGGTGGCCCTATGCACCCAGTAGCCCTGGGCATGGAGCACCTGTCCAACAACCGCTTTGT
 GCATAAGGACTTGGTGCAGCTAACTGCCTGGTCACTGCCCAGAGACAAGTGAAGGTGTCTGCCCTGGGC
 CTCAGCAAGGATGTGTACAACAGTGAGTACTACCACTTCCGCCAGGCCTGGGTGCCGCTGCCTGGATGT
 CCCCCGAGGCCATCCTGGAGGGTACTTCTTACCAAGTCTGATGTCTGGGCCTTCGGTGTGCTGATGTG
 GGAAGTGTACACATGGAGAGATGCCCATGGTGGGCAGGCAGATGATGAAGTACTGGCAGATTTGCAG
 GCTGGGAAGGCTAGACTTCTCAGCCCGAGGGCTGCCCTTCCAACCTCTATCGGCTGATGCAGCGCTGCT
 GGGCCCTCAGCCCAAGGACCGCCCTCCTTCACTGAGATTGCCAGCGCCCTGGGAGACAGCACCCGTGGA
 CAGCAAGCCG

ACGCGTACGCGGCCGCTCGAGCAGAACTCATCTCAGAAGAGGATCTGGCAGCAATGATATCCTGGATT
 ACAAGGATGACGACGATAAGGTTTAA

Protein Sequence: >RC223416 representing NM_152880
 Red=Cloning site Green=Tags(s)

MGAARGSPARPRRLPLLSVLLLPLLGGTQTAIVFIKQPSSQDALQRRALLRCEVEAPGPVHVYLLDGA
 PVQDTERFAQSSLSFAAVDRLQDSGTFQCVARDDVTGEEARSANASFNKIEWIEAGPVVVKHPASEAEI
 QPQTQVTLRCHIDGHRPTYQWFRDGTPLSDGQSNHTVSSKERNLTLRPAGPEHSGLYSCAHSFAGQAC
 SSQNFTLSIADESFARVVLAPQDVVARYEAMFHCQFSAQPPPSLQWLFEDETPITNRSRPHLRATV
 FANGSLLLTVRPRNAGIYRCIGGQGRGPPIIIEATLHLAEIEDMPLFEPRVFTAGSEERVTCCLPPKGLP
 EPSVWWEHAGVRLPTHGRVYQKGHELVLANIAESDAGVYTCHAANLAGQRRQDVNITVATVPSWLKKPQD
 SQLEEGKPGYLDCLTQATPKPTVVWYRNQMLISEDSTRFEVFKNGTLRINSVEVYDGTWYRCMSSTPAGSI
 EAQARVQVLDGSSLPEWVTDNAGTLHFARVTRDDAGNYTCIASNGPQQGIRAHVQLTVAVFITFKVEPER
 TTVYQGHNTALLQCEAQGDPKPLIQWKGDRILDPTKLGPRMHIFQNGSLVIHDVAPEDSGRYTCIAGNSC
 NIKHTEAPLYVVDKPVPEESEGGSPPPYKMIQTIGLSVGAAYAVYIIAVLGLMFYCKKRCKAKRLKQPE
 GEEPEMECLNGPLQNGQPSAEIQEEVALTSLGSGPAATNKRHSTSDKMHFPRSSLQPIITLTKSEFGEV
 FLAKAQGLEEGVAETLVVKSLSQKDEQQQLDFRRELEMFGLNHANVVRLGLCREAEPHYMVLEYVDL
 GDLKQFLRISKSKDEKLKSOPLSTKQKVALCTQVALGMEHLNNRFVHKDLAARNCLVSAQRQVKVSALG
 LSKDVYNSEYYHFRQAWVPLRWMSPEAILEGDFSTKSDVWAFGVLMEVFTHGEMPHGGQADDEVLDLQ
 AGKARLPQEGCPSKLYRLMQRWALSPKDRPSFSEIASALGDSTVDSKP

TRTRPLEQKLISEEDLAANDILDYKDDDDKV

Restriction Sites: SgfI-MluI

Cloning Scheme:


ACCN: NM_152880

ORF Size: 3090 bp

OTI Disclaimer: Due to the inherent nature of this plasmid, standard methods to replicate additional amounts of DNA in E. coli are highly likely to result in mutations and/or rearrangements. Therefore, OriGene does not guarantee the capability to replicate this plasmid DNA. Additional amounts of DNA can be purchased from OriGene with batch-specific, full-sequence verification at a reduced cost. Please contact our customer care team at custsupport@origene.com or by calling 301.340.3188 option 3 for pricing and delivery.

The molecular sequence of this clone aligns with the gene accession number as a point of reference only. However, individual transcript sequences of the same gene can differ through naturally occurring variations (e.g. polymorphisms), each with its own valid existence. This clone is substantially in agreement with the reference, but a complete review of all prevailing variants is recommended prior to use. [More info](#)

OTI Annotation: This clone was engineered to express the complete ORF with an expression tag. Expression varies depending on the nature of the gene.

Components: The ORF clone is ion-exchange column purified and shipped in a 2D barcoded Matrix tube containing 10ug of transfection-ready, dried plasmid DNA (reconstitute with 100 ul of water).

Reconstitution Method:

1. Centrifuge at 5,000xg for 5min.
2. Carefully open the tube and add 100ul of sterile water to dissolve the DNA.
3. Close the tube and incubate for 10 minutes at room temperature.
4. Briefly vortex the tube and then do a quick spin (less than 5000xg) to concentrate the liquid at the bottom.
5. Store the suspended plasmid at -20°C. The DNA is stable for at least one year from date of shipping when stored at -20°C.

RefSeq: [NM_152880.4](#)

RefSeq Size: 4129 bp

RefSeq ORF: 3093 bp

Locus ID: 5754

UniProt ID: [Q13308](#)

Cytogenetics: 6p21.1

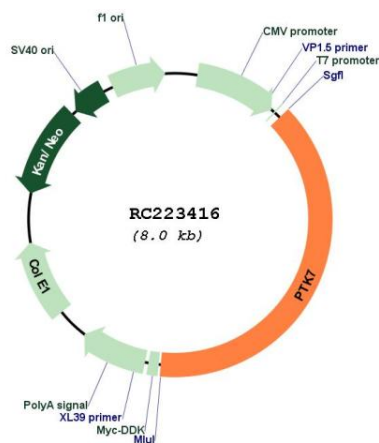
Domains: pkinase, TyrKc, S_TKc, ig, IGc2, IG

Protein Families: Druggable Genome, Protein Kinase, Transmembrane

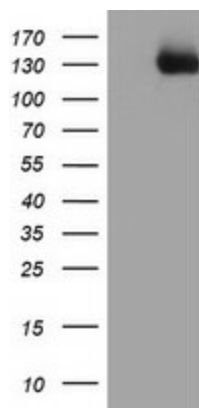
MW: 110.7 kDa

Gene Summary: This gene encodes a member of the receptor protein tyrosine kinase family of proteins that transduce extracellular signals across the cell membrane. The encoded protein lacks detectable catalytic tyrosine kinase activity, is involved in the Wnt signaling pathway and plays a role in multiple cellular processes including polarity and adhesion. Alternatively spliced transcript variants encoding multiple isoforms have been observed for this gene. [provided by RefSeq, Jul 2012]

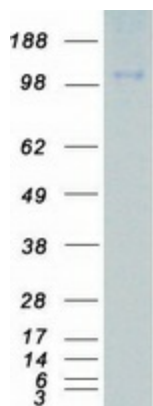
Product images:



Circular map for RC223416



HEK293T cells were transfected with the pCMV6-ENTRY control (Cat# [PS100001], Left lane) or pCMV6-ENTRY PTK7 (Cat# RC223416, Right lane) cDNA for 48 hrs and lysed. Equivalent amounts of cell lysates (5 ug per lane) were separated by SDS-PAGE and immunoblotted with anti-PTK7(Cat# [TA503920]).



Coomassie blue staining of purified PTK7 protein (Cat# [TP323416]). The protein was produced from HEK293T cells transfected with PTK7 cDNA clone (Cat# RC223416) using MegaTran 2.0 (Cat# [TT210002]).