

Product datasheet for **RC223414**

KRTAP1-5 (NM_031957) Human Tagged ORF Clone

Product data:

Product Type: Expression Plasmids
Product Name: KRTAP1-5 (NM_031957) Human Tagged ORF Clone
Tag: Myc-DDK
Symbol: KRTAP1-5
Synonyms: KAP1.5; KRTAP1.5
Mammalian Cell Selection: Neomycin
Vector: pCMV6-Entry (PS100001)
E. coli Selection: Kanamycin (25 ug/mL)
ORF Nucleotide Sequence: >RC223414 ORF sequence
 Red=Cloning site Blue=ORF Green=Tags(s)

TTTTGTAATACGACTCACTATAGGGCGCCGGGAATTCGTCGACTGGATCCGGTACCGAGGAGATCTGCC
 GCC**CGATCGCC**

ATGACCTGCTGCCAGACCAGCTTCTGTGGATATCCAGCTTCTCCATCAGTGGGACCTGTGGCTCCAGCT
 GCTGCCAGCCAAGCTGCTGTGAGACCAGCTGCTGCCAGCCACGCAGCTGCCAGACTAGCTTCTGCGGATT
 TCCAGCTTCTCAACCAGTGGGACCTGCAGCTCCAGTTGCTGCCAGCCAAGCTGCTGTGAGACCAGCTGC
 TGCCAGCCAAGCTGCTGTGAGACCAGCTGCTGCCAGCCAAGCTGCTGCCAGATCAGCTCCTGCGGAAGT
 GCTGTGGCATTGGTGGTGGCATCAGCTATGGCCAGGAGGGCAGCAGTGGAGCTGTGAGCACCCGTATCAG
 GTGGTGCCGCCAGACAGTCGTGTGGAGGGCACCTACCTACCCCCCTGCTGTGTGGTGTGAGCTGCACGCC
 CCATCCTGCTGCCAACTGCACCATGCCAGGCCTCCTGCTGCCGCCCGTCTACTGTGGACAGTCTGCT
 GCCGCCAGTCTGCTGTGTGAGCCCACTTGC

ACGCGTACGCGGCCGCTCGAGCAGAACTCATCTCAGAAGAGGATCTGGCAGCAAATGATATCCTGGATT
 ACAAGGATGACGACGATAAGGTTTAA

Protein Sequence: >RC223414 protein sequence
 Red=Cloning site Green=Tags(s)

MTCCQTSFCGYPSFSISGTCGSSCCQPSCCETSCCQPRSCQTSFCGFPSTSGTSSSSCCQPSCCETSC
 CQPSCCETSCCQPSCCQISSCGTGCGIGGGISYQGEGSSGAVSTRIRWCRPDSRVEGYLPPCCVVSCTP
 PSCCQLHHAQASCCRPSCGQSCCRPVCCCEPTC

TRTRPLEQKLISEEDLAANDILDYKDDDDKV

Restriction Sites: Sgfl-MluI



[View online »](#)

Cloning Scheme:


ACCN: NM_031957

ORF Size: 522 bp

OTI Disclaimer: The molecular sequence of this clone aligns with the gene accession number as a point of reference only. However, individual transcript sequences of the same gene can differ through naturally occurring variations (e.g. polymorphisms), each with its own valid existence. This clone is substantially in agreement with the reference, but a complete review of all prevailing variants is recommended prior to use. [More info](#)

OTI Annotation: This clone was engineered to express the complete ORF with an expression tag. Expression varies depending on the nature of the gene.

Components: The ORF clone is ion-exchange column purified and shipped in a 2D barcoded Matrix tube containing 10ug of transfection-ready, dried plasmid DNA (reconstitute with 100 ul of water).

Reconstitution Method:

1. Centrifuge at 5,000xg for 5min.
2. Carefully open the tube and add 100ul of sterile water to dissolve the DNA.
3. Close the tube and incubate for 10 minutes at room temperature.
4. Briefly vortex the tube and then do a quick spin (less than 5000xg) to concentrate the liquid at the bottom.
5. Store the suspended plasmid at -20°C. The DNA is stable for at least one year from date of shipping when stored at -20°C.

RefSeq: [NM_031957.2](#)

RefSeq Size: 1193 bp

RefSeq ORF: 525 bp

Locus ID: 83895

UniProt ID: [Q9BYS1](#)

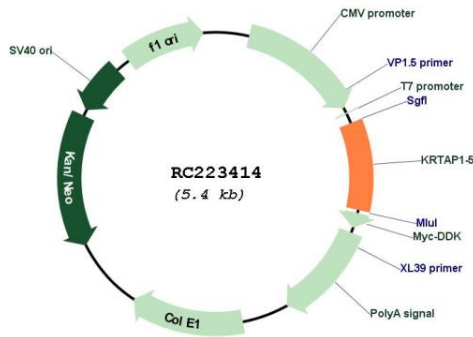
Cytogenetics: 17q21.2

MW: 18 kDa

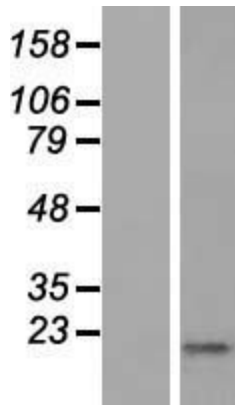
Gene Summary:

This protein is a member of the keratin-associated protein (KAP) family. The KAP proteins form a matrix of keratin intermediate filaments which contribute to the structure of hair fibers. KAP family members appear to have unique, family-specific amino- and carboxyl-terminal regions and are subdivided into three multi-gene families according to amino acid composition: the high sulfur, the ultrahigh sulfur, and the high tyrosine/glycine KAPs. This protein is a member of the high sulfur KAP family and the gene is localized to a cluster of KAPs at 17q12-q21. [provided by RefSeq, Jul 2008]

Product images:



Circular map for RC223414



Western blot validation of overexpression lysate (Cat# [LY410409]) using anti-DDK antibody (Cat# [TA50011-100]). Left: Cell lysates from untransfected HEK293T cells; Right: Cell lysates from HEK293T cells transfected with RC223414 using transfection reagent MegaTran 2.0 (Cat# [TT210002]).